



IRIS

ONE.1

FWD

IRIS ONE.1 FWD COMPETITION TOURING CAR KIT

#RACEIRIS

Thank you for purchasing the IRIS ONE.1 FWD.

Over the last two years since the release of the original IRIS ONE, we have undertaken extensive learning, testing, improving, and optimizing. The IRIS ONE.1 is the culmination of these efforts.

Our team drivers have been racing and testing around the globe, competing against the toughest opponents. The results speak for themselves — multiple podium finishes, victories, and even a TITC championship title. These achievements have not only validated our platform but also allowed us to develop it further under the most demanding conditions and race series worldwide. All of the improvements in this model have been race-proven, and include:

- *New, harder plastic upper and lower A-arms for increased corner stability and speed.*
- *New rear active toe linkage for more consistent cornering and a more precise rear end.*
- *Improved flex with a one-piece design top-deck for better handling.*
- *New rear shock stiffener for enhanced rear traction and corner speed.*
- *Now includes our innovative internal shock spring system for the rear shocks, improving handling and cornering speed.*

At IRIS, we aim high, embracing the risks that come with innovation, all to offer you the best possible product. Your trust in us fuels our passion, and we genuinely thank you for being part of this journey with IRIS.

We hope that you enjoy the IRIS ONE.1, a testament to our never-ending quest for excellence.

For setups, PDF manuals or other information, please visit our website www.iris-racing.com:



GEAR UP WITH RUDDOG:

THE ESSENTIAL TOOLS FOR YOUR IRIS ONE.1.



CURVED SCISSORS

MICRO PLIERS SET (5)

STRAIGHT SCISSORS

7.0MM NUT DRIVER WRENCH

5.5MM NUT DRIVER WRENCH

2.5MM HEX DRIVER WRENCH

2.0MM HEX DRIVER WRENCH

1.5MM HEX DRIVER WRENCH

CLEANING BRUSH

TWEEZERS

HOBBY KNIFE

BODY REAMER

RACE AHEAD WITH RUDDOG:

ESSENTIAL RACING EQUIPMENT FOR YOUR IRIS ONE.1.



RXS SPEED CONTROLLER

RP542 BRUSHLESS MOTOR

RR1406 SERVO

RR492 RECEIVER

RC230 CHARGER

64DP ALUMINIUM PINION

SHORTY BATTERY

BITTYDESIGN CA45 FWD BODY

DOUBLE SIDED TAPE

DRIVETRAIN OIL

BALL BEARING OIL

RED STUFF O-RING GREASE

THREAD LOCK MEDIUM

CA TIRE GLUE



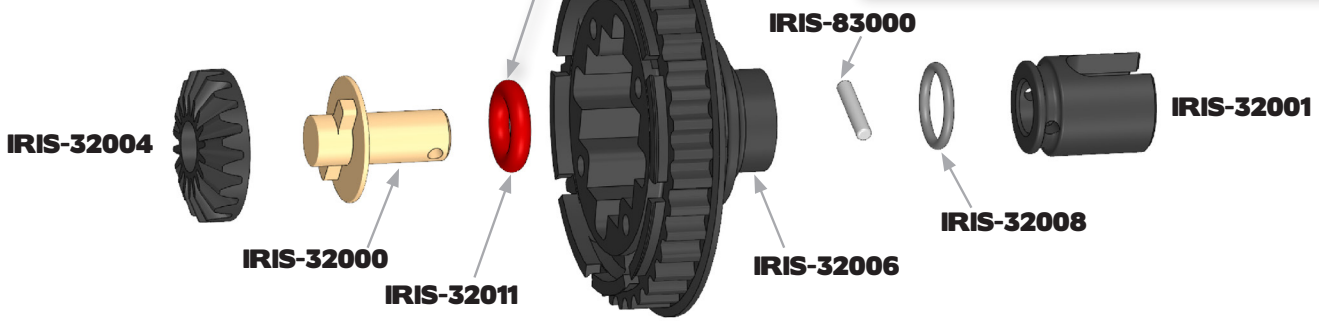
RUDDOG.EU

1.1

DIFFERENTIAL

Lubricate using
RUDDOG Red Stuff
Grease or similiar.

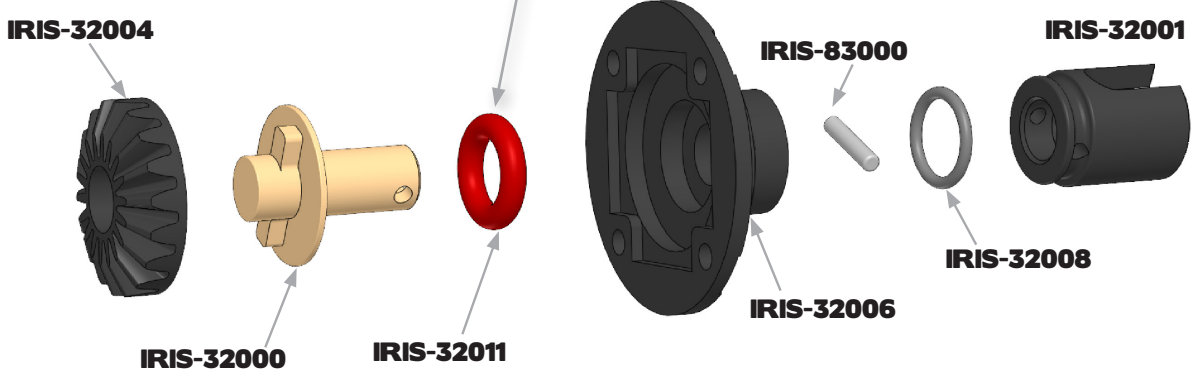
! Please note
direction.
Steep angle
inside



1.2

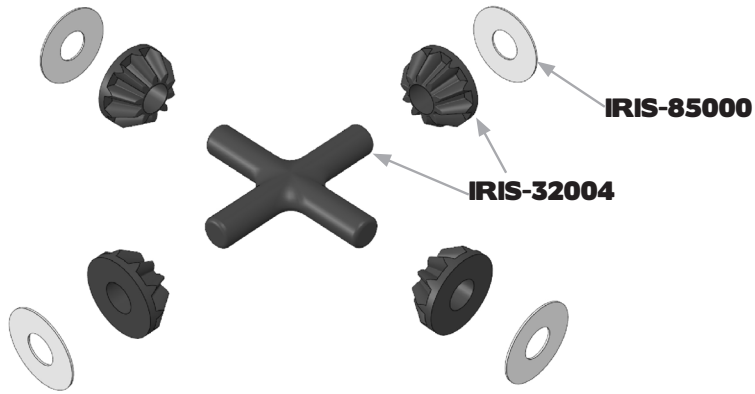
DIFFERENTIAL

Lubricate using
RUDDOG Red Stuff
Grease or similiar.

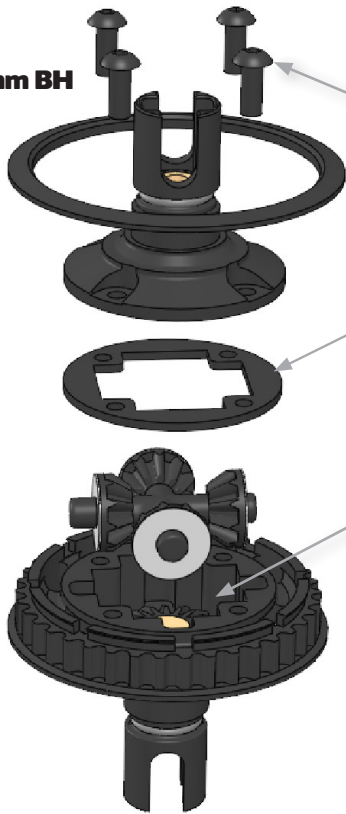


1.2

DIFFERENTIAL



M2.5x6mm BH




Do not overtighten.

IRIS-32011

Fill with 1.0g of Silicone Oil. We recommend 200k cst as starting point.

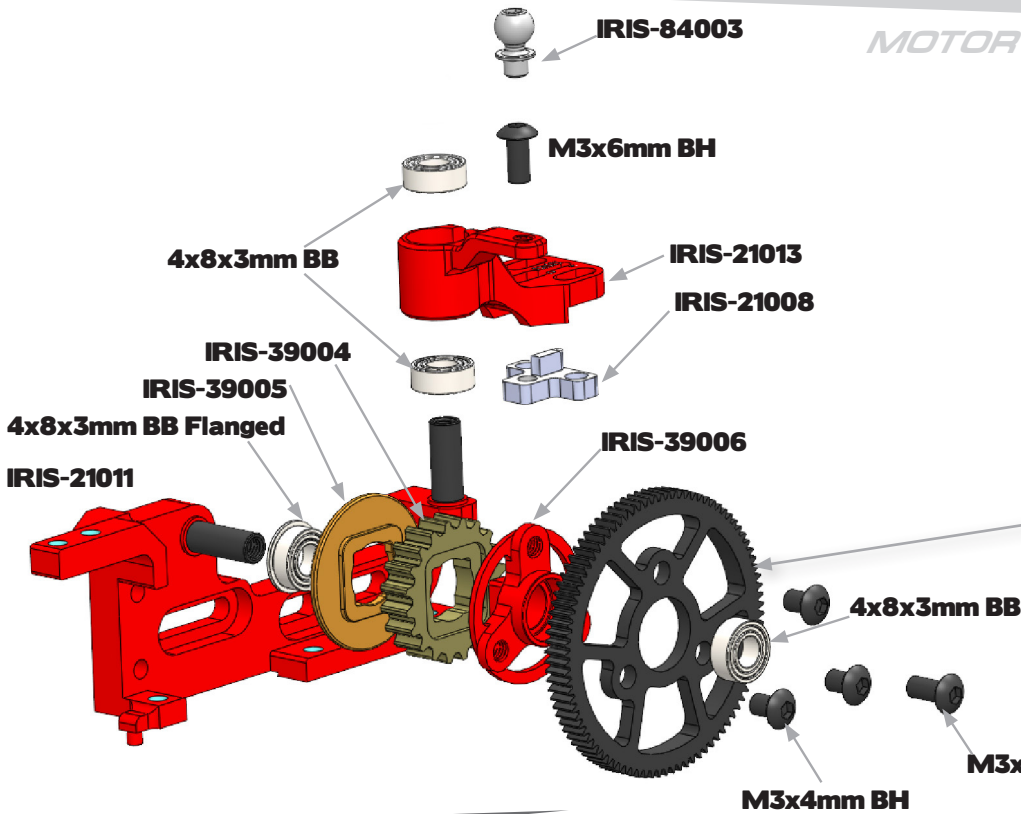
DIFFERENTIAL

1.1

x4
M2.5x6mm
Button Head Screw

2.1

MOTOR MOUNT



x2
M3x6mm
Button Head Screw

31
M3x4mm
Button Head Screw

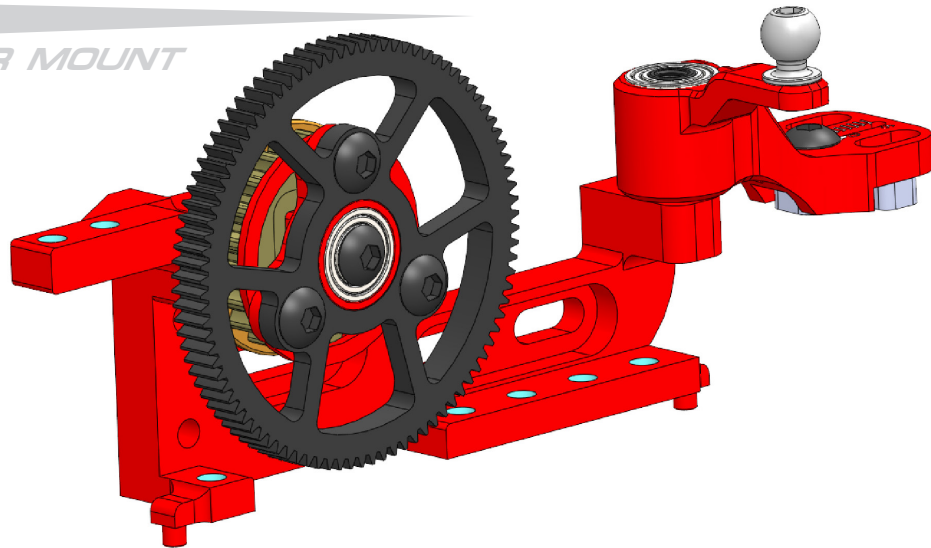
x3
4x8x3mm
Ball Bearing

x1
4x8x3mm
Flanged Ball Bearing


Spur gear is not included in the kit. Use:
IRIS-31000 90T
IRIS-31001 100T

2.1

MOTOR MOUNT



2.2

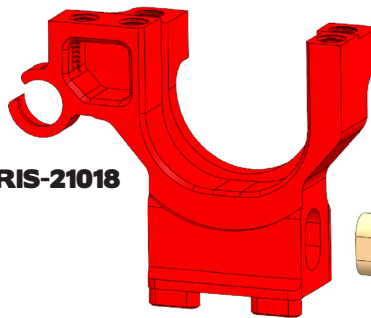
BULKHEAD LEFT

x4
M3x3mm
Set Screw



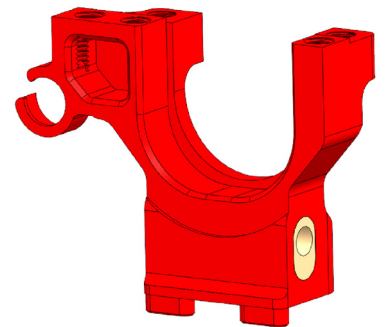
Build this step twice !

IRIS-21018



IRIS-21005

M3x3mm SS



2.3

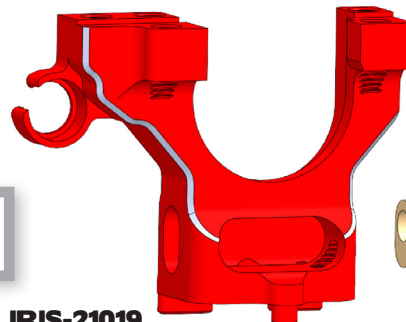
BULKHEAD RIGHT

x4
M3x3mm
Set Screw



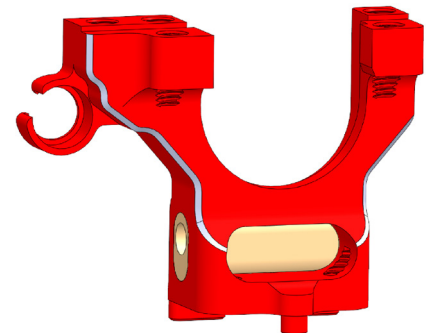
Build this step twice !

IRIS-21019



IRIS-21005

M3x3mm SS



3.1

CHASSIS



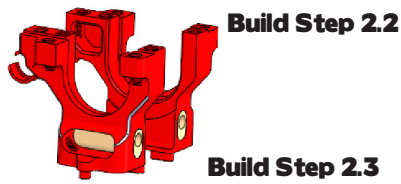
Start with #0 belt tension inserts.



Internal drive ratio is 1.9

x11
M3x6mm
Countersunk Screw

x2
10x15mmmm
Ball Bearing

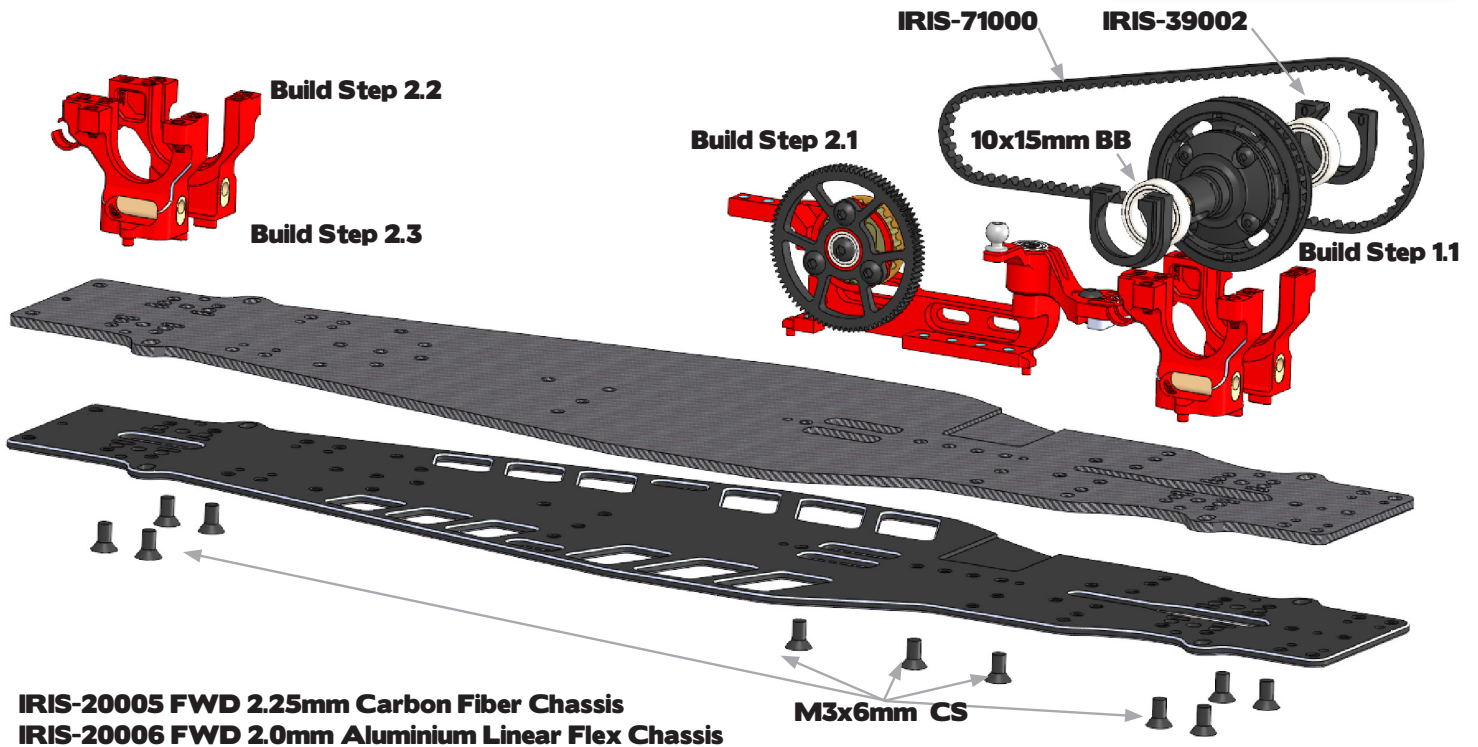


Build Step 2.2

Build Step 2.3

Build Step 2.1

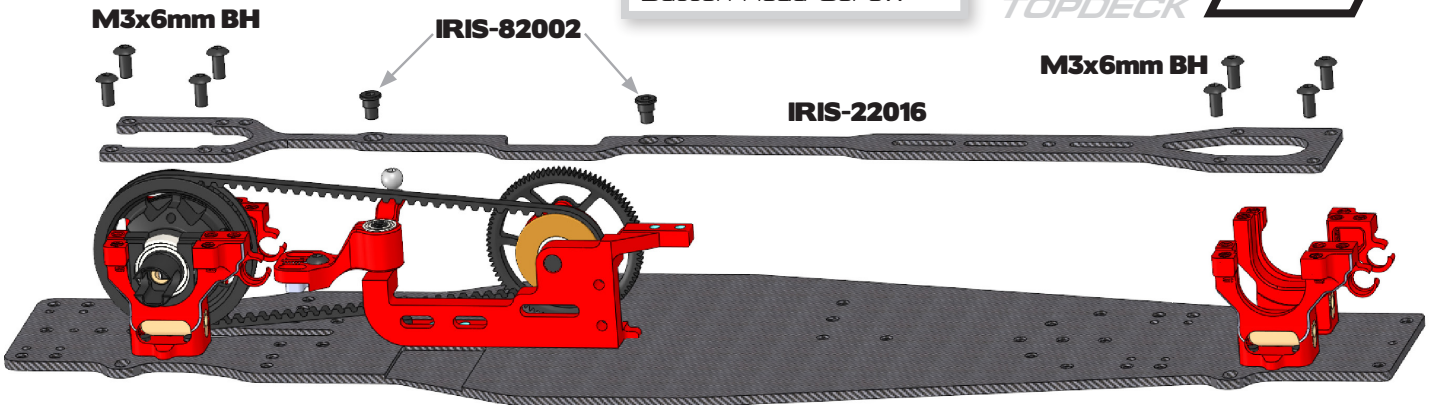
Build Step 1.1



3.2

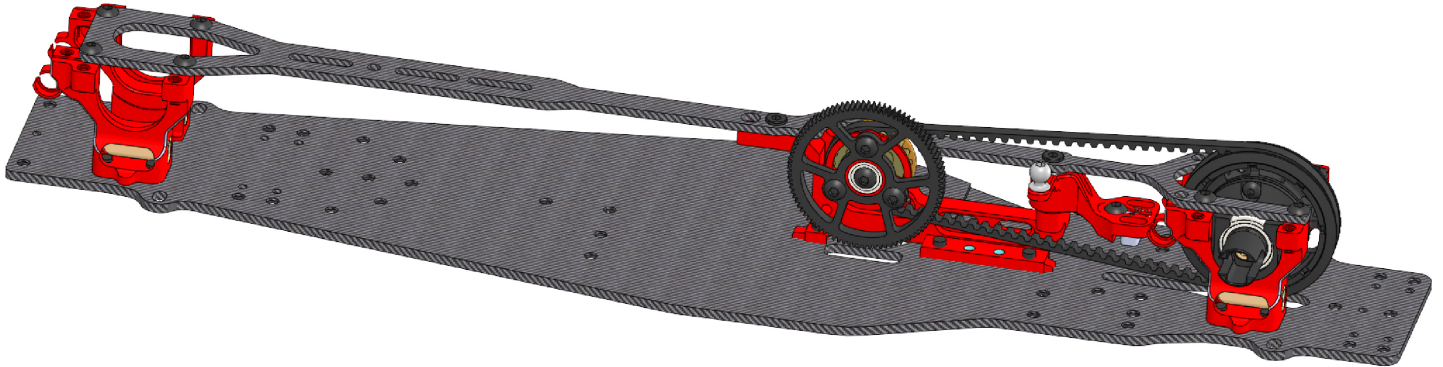
TOPDECK

x8
M3x6mm
Button Head Screw



3.2

CHASSIS AND TOPDECK MOUNTED

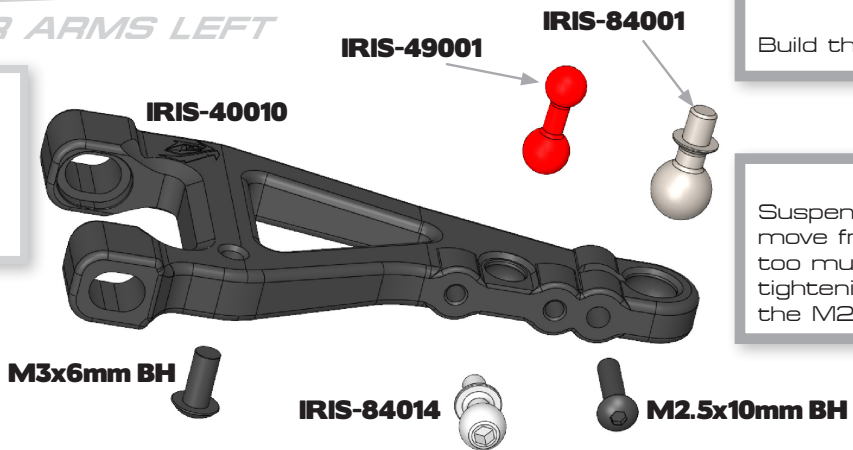


4.1

LOWER ARMS LEFT

x2
M2.5x10mm
Button Head Screw

x2
M3x6mm
Button Head Screw

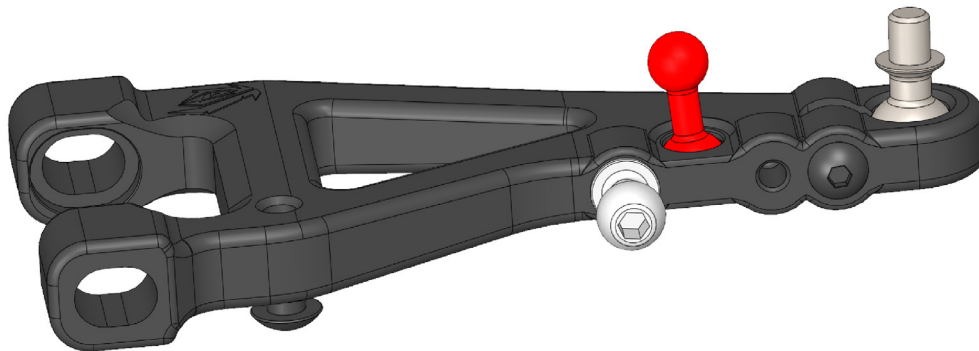


Build this step twice !

Suspension balls should move freely, yet have not too much play. Adjust by tightening or loosening the M2.5x10mm screw.

4.1

LOWER ARMS LEFT



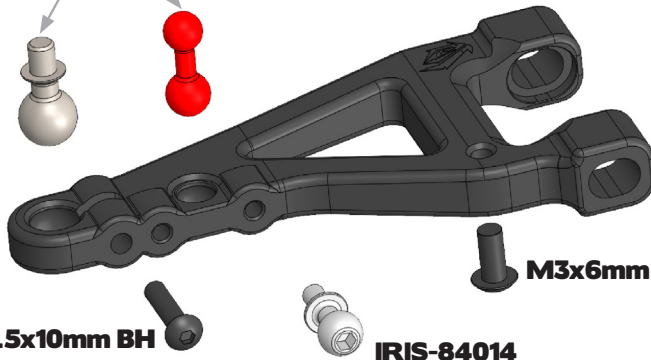


Build this step twice !



Suspension balls should move freely, yet have not too much play. Adjust by tightening or loosening the M2.5x10mm screw.

IRIS-49001
IRIS-84001



RIGHT

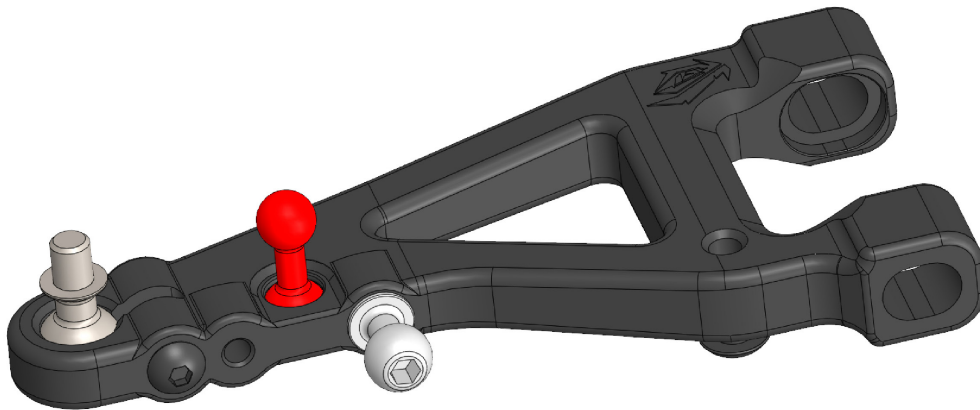
4.1

x2
M2.5x10mm
Button Head Screw

x2
M3x6mm
Button Head Screw

4.1

LOWER ARMS RIGHT



IRIS-41003

IRIS-84004

FRONT LEFT UPPER ARM

4.2

M2.5x14mm BH

M2.5x10mm BH

x1
M2.5x10mm
Button Head Screw

x1
M2.5x14mm
Button Head Screw

Use the included wrench to mount the adjustment nuts (wrench is on the battery mount injection mold).

IRIS-85001

2mm Plastic Washer

IRIS-40010

IRIS-84000

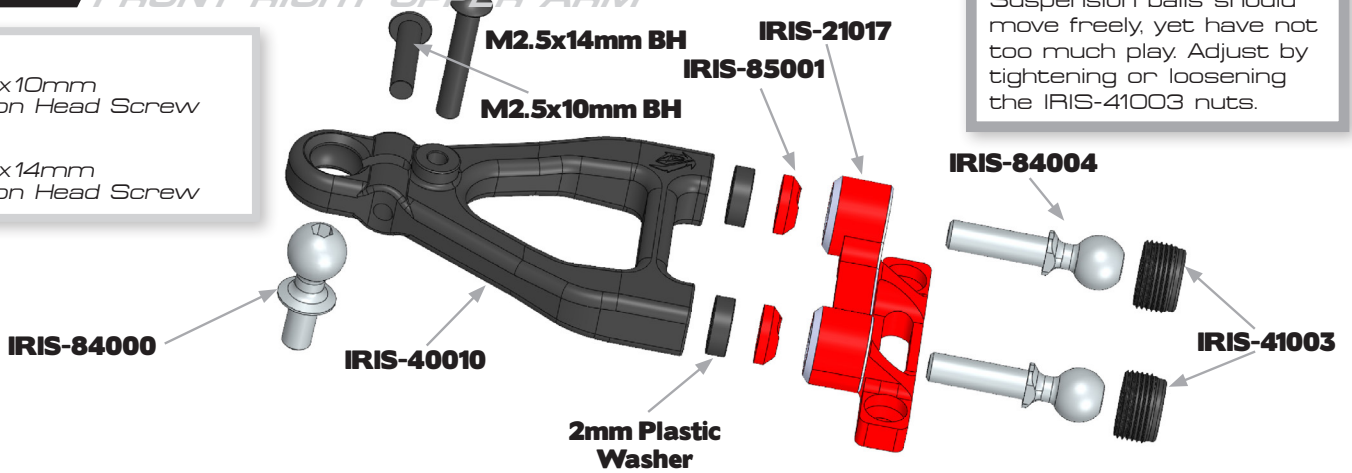
Suspension balls should move freely, yet have not too much play. Adjust by tightening or loosening the IRIS-41003 nuts.

4.2

FRONT RIGHT UPPER ARM

x1
M2.5x10mm
Button Head Screw

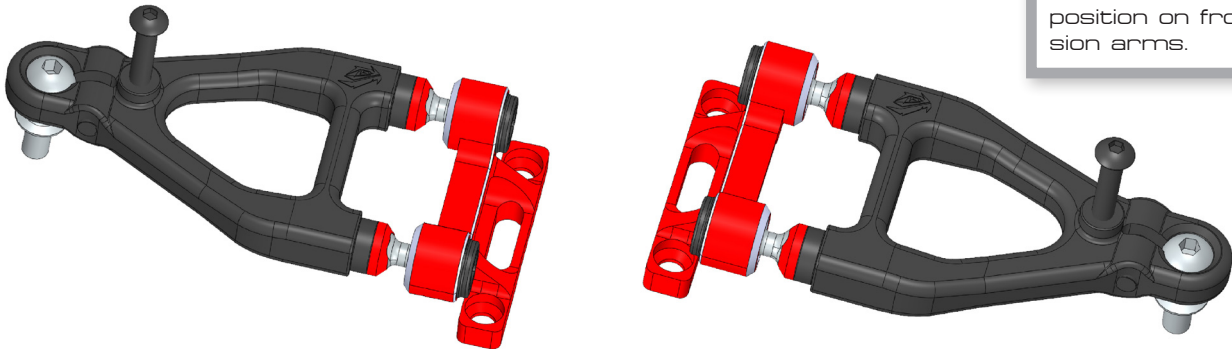
x1
M2.5x14mm
Button Head Screw



Suspension balls should move freely, yet have not too much play. Adjust by tightening or loosening the IRIS-41003 nuts.

4.2

FRONT UPPER ARMS ASSEMBLED



IRIS icon always in rear position on front suspension arms.

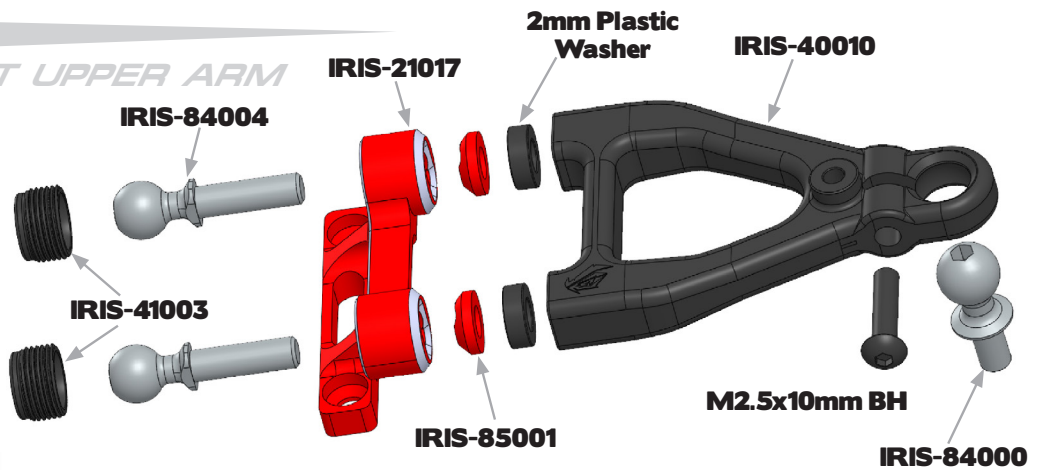
4.3

REAR LEFT UPPER ARM

x1
M2.5x10mm
Button Head Screw




Suspension balls should move freely, yet have not too much play. Adjust by tightening or loosening the IRIS-41003 nuts.

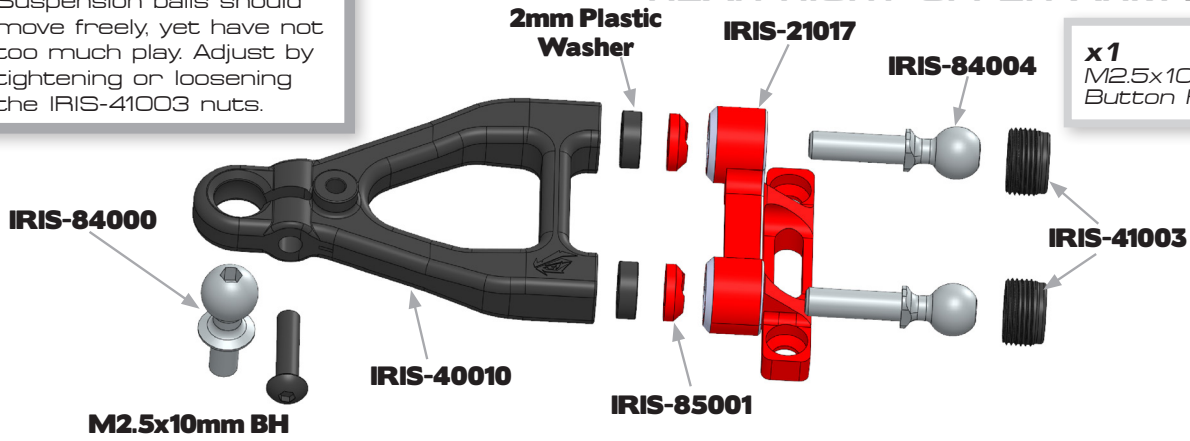


4.3

REAR RIGHT UPPER ARM

 Suspension balls should move freely, yet have not too much play. Adjust by tightening or loosening the IRIS-41003 nuts.

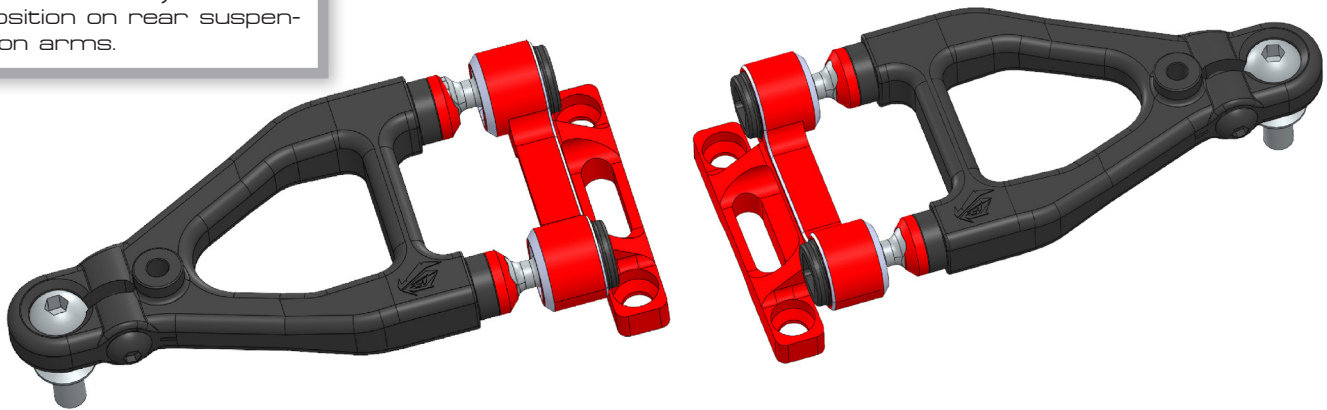
x1
M2.5x10mm
Button Head Screw



4.3

REAR UPPER ARMS ASSEMBLED

 IRIS icon always in front position on rear suspension arms.

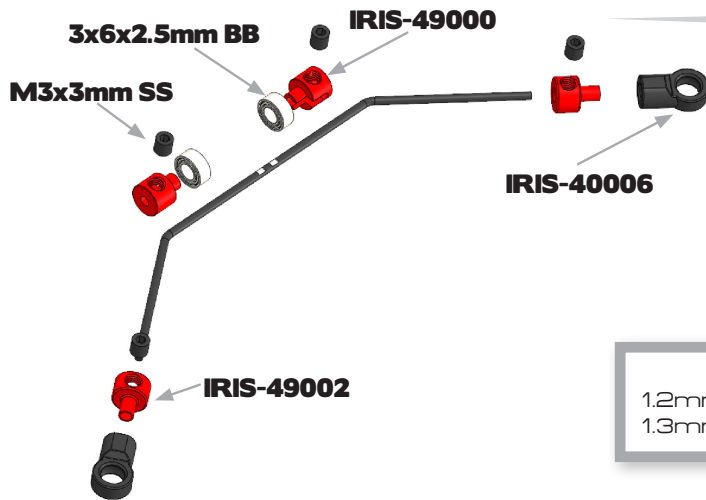



4.4

ANTI-ROLL BAR

x8
M3x3mm
Set Screw

x4
3x6x2.5mm
Ball Bearing



 1.2mm front anti-roll bar
1.3mm rear anti-roll bar

 Build this step twice !

4.5

MOUNTING OF FRONT LOWER

x2
M3x3mm
Set Screw

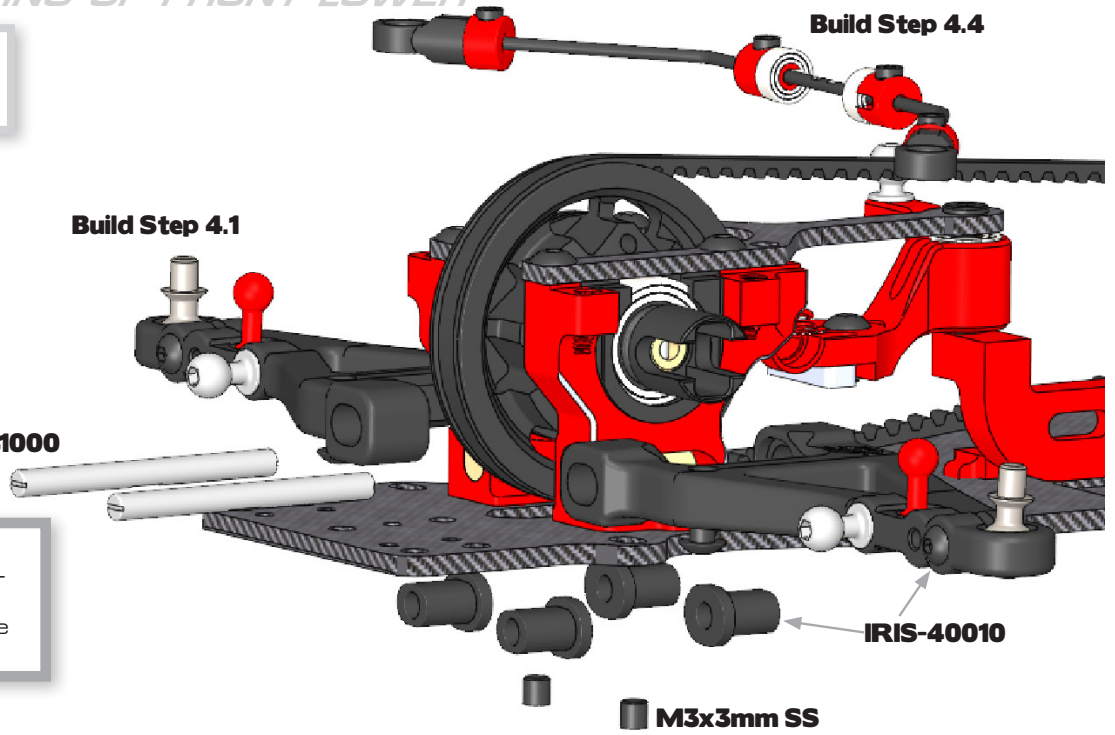
IRIS-41000



Use a 3.0mm arm reamer to increase the insert hole size until the hinge pin moves freely.

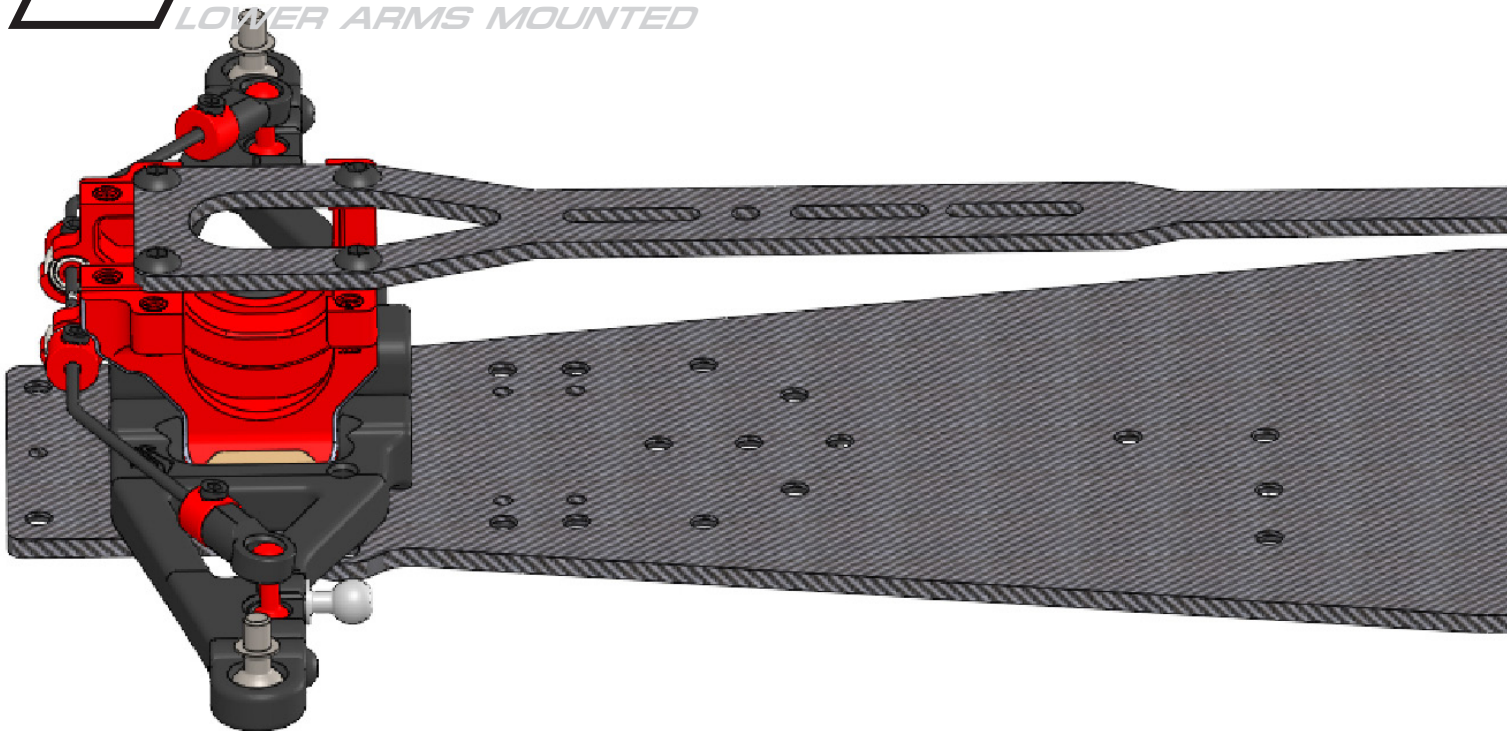
Build Step 4.1

Build Step 4.4



4.5

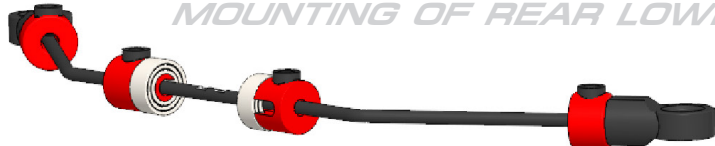
LOWER ARMS MOUNTED



4.5

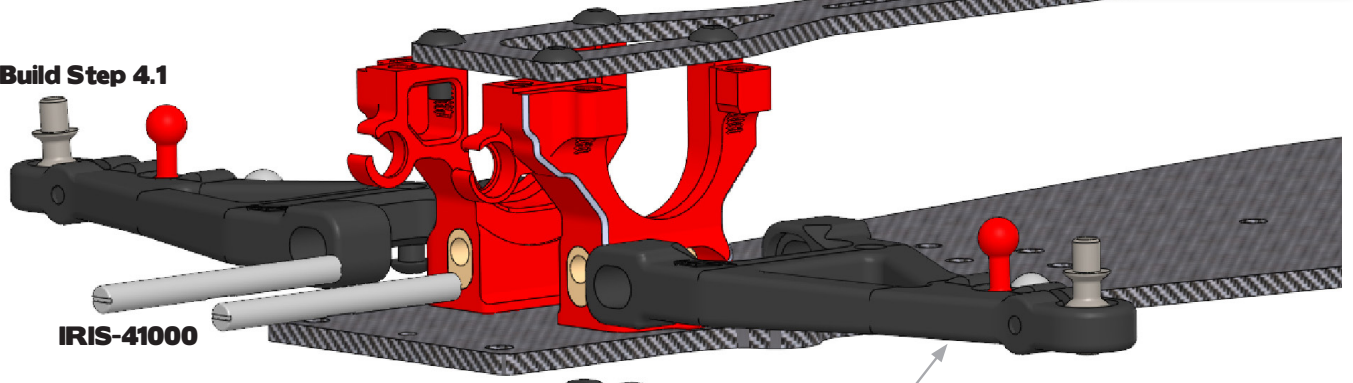
MOUNTING OF REAR LOWER ARMS

Build Step 4.4



x2
M3x3mm
Set Screw

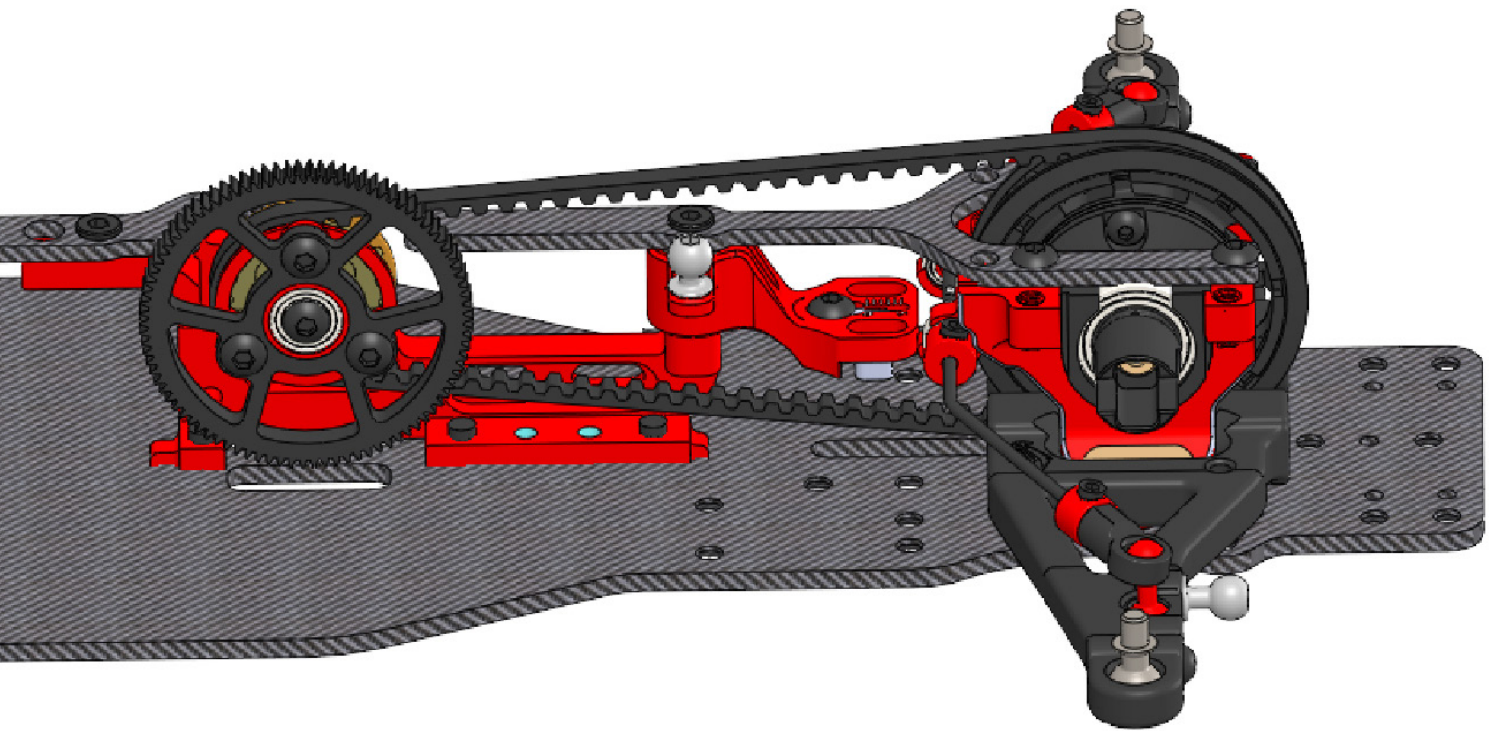
Build Step 4.1



IRIS-41000

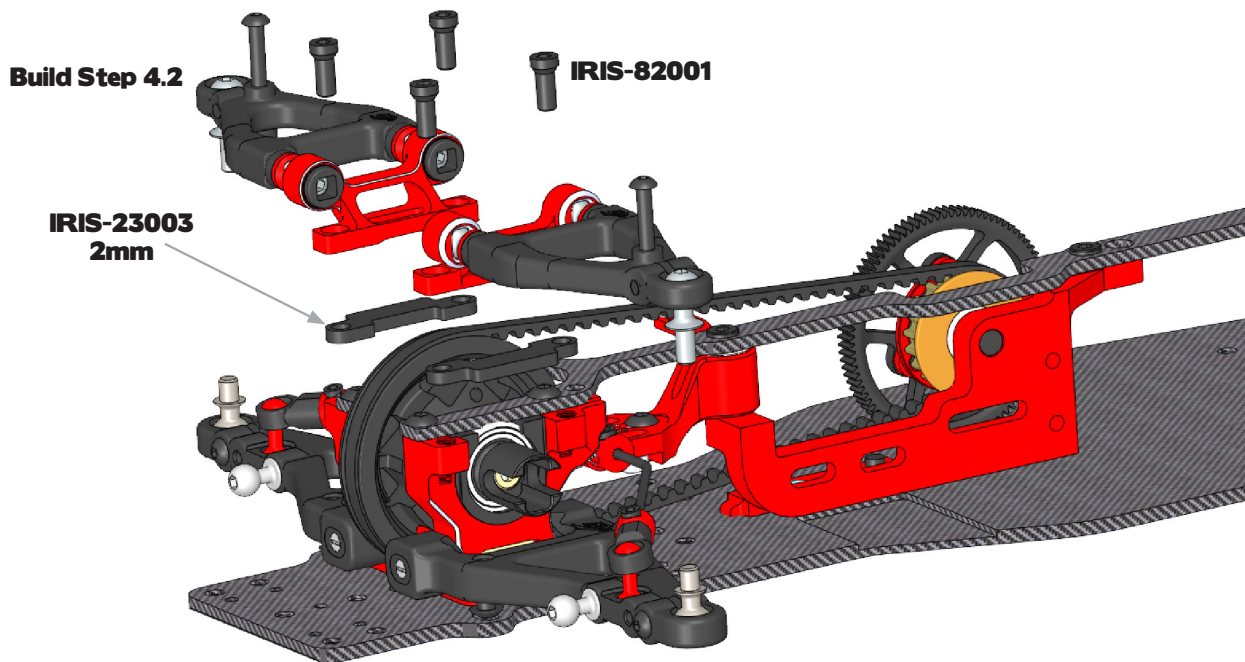
IRIS-40010

M3x3mm SS



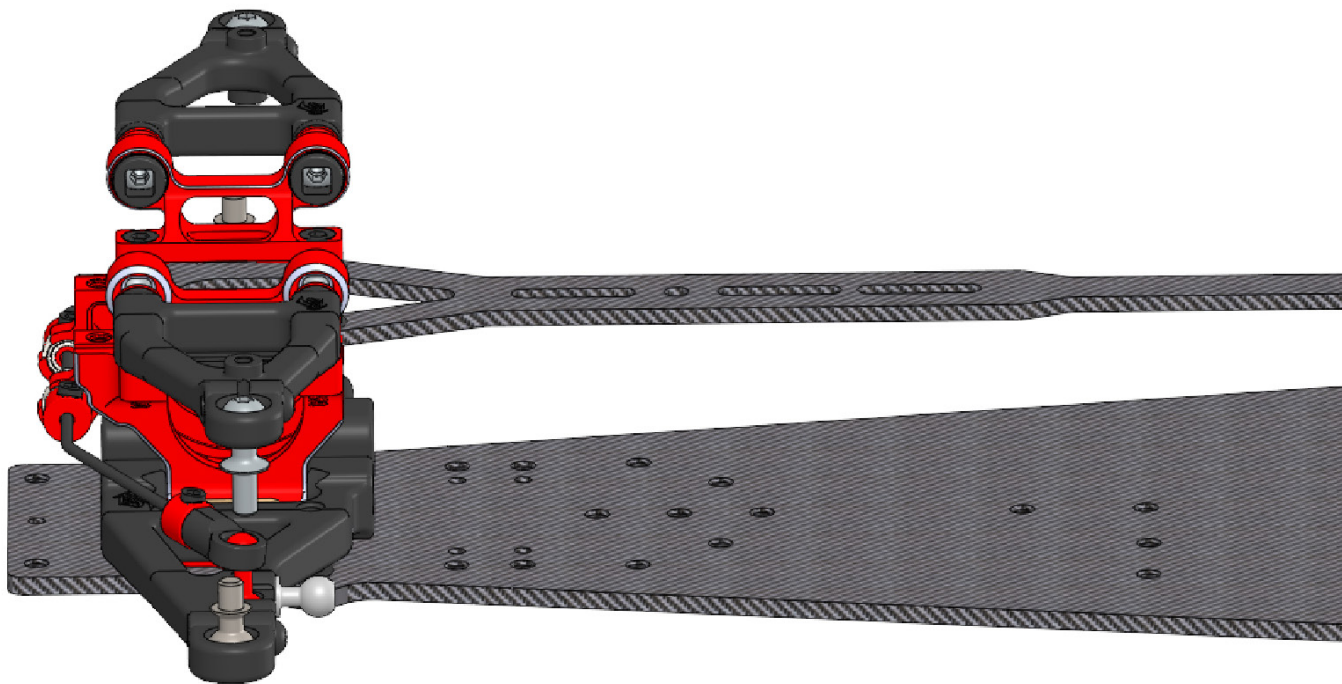
4.6

MOUNTING OF FRONT UPPER ARMS



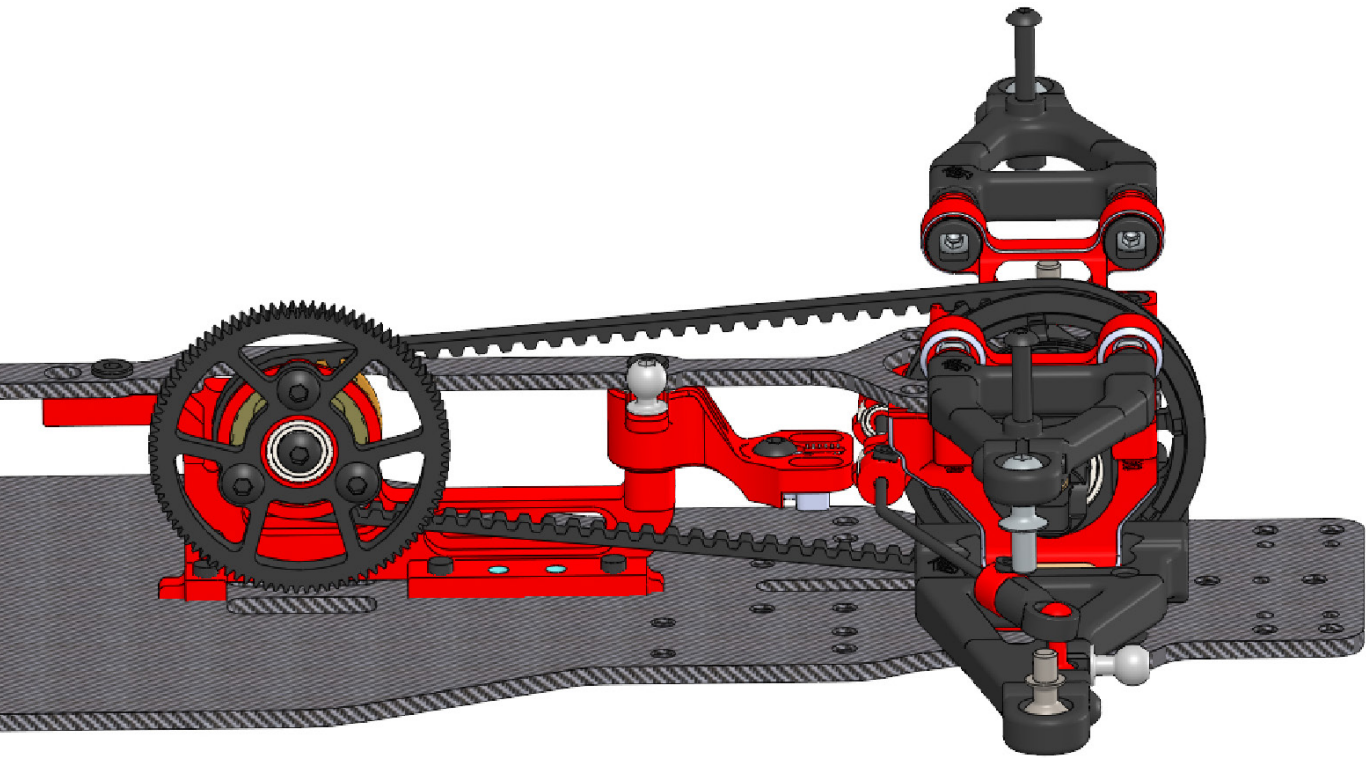
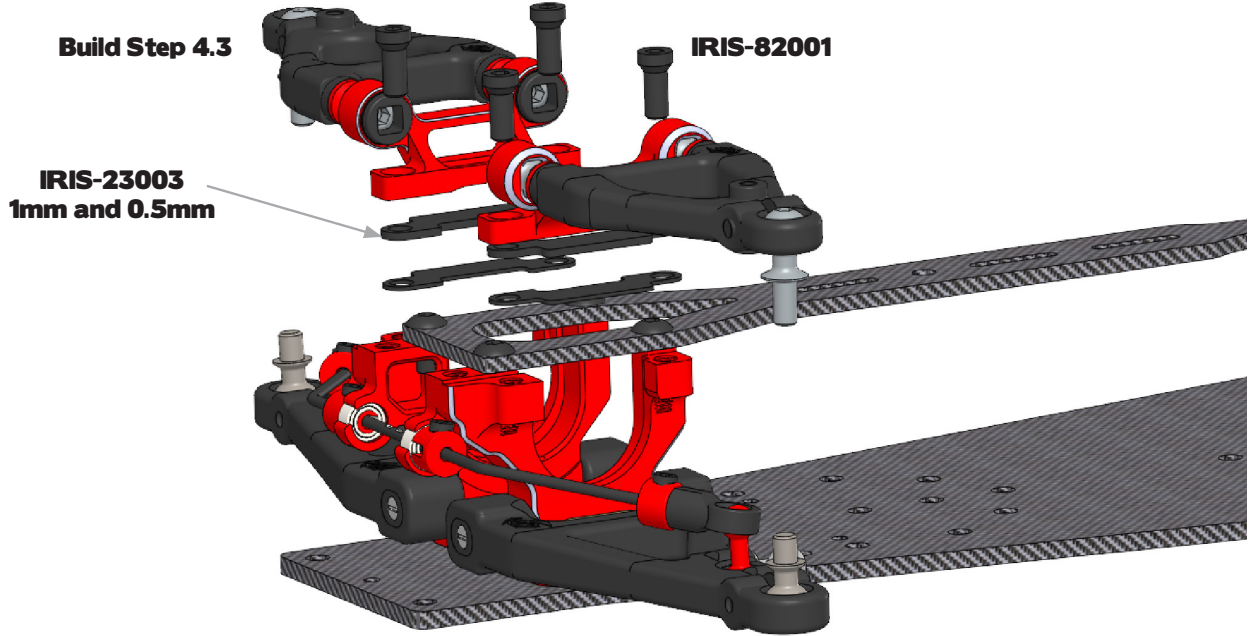
4.6

UPPER ARMS MOUNTED



4.6

MOUNTING OF REAR UPPER ARMS



5.1

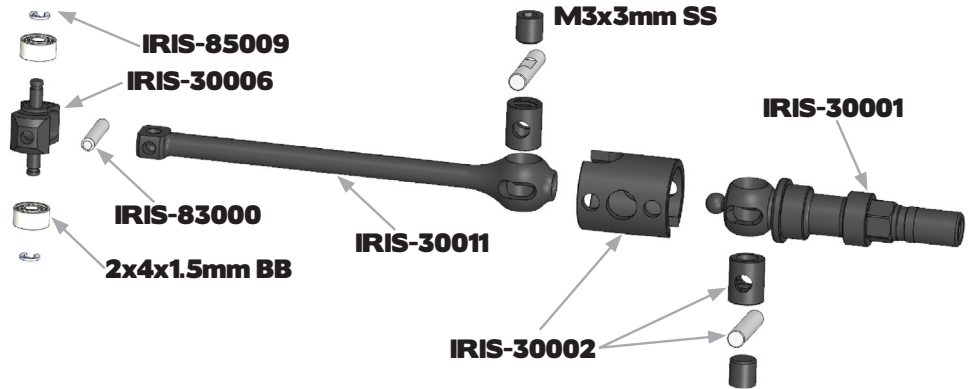
FRONT DRIVESHAFT

x2
M3x3mm
Set Screw

x2
2x4x1.5mm
Ball Bearing



Build this step twice !

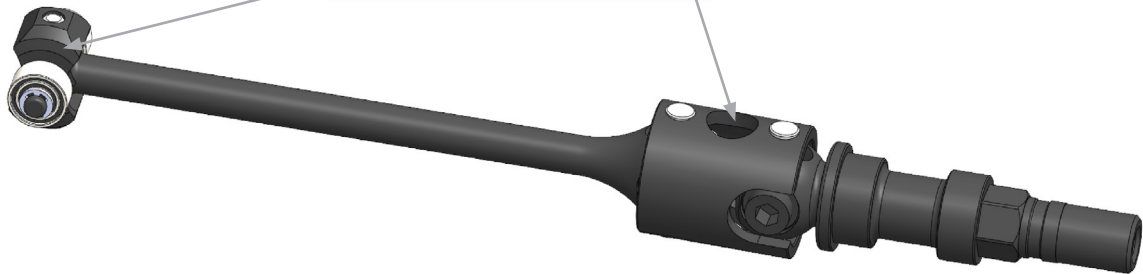


5.1

FRONT DRIVESHAFT



Lubricate using RP-0494
RUDDOG Drivetrain Oil



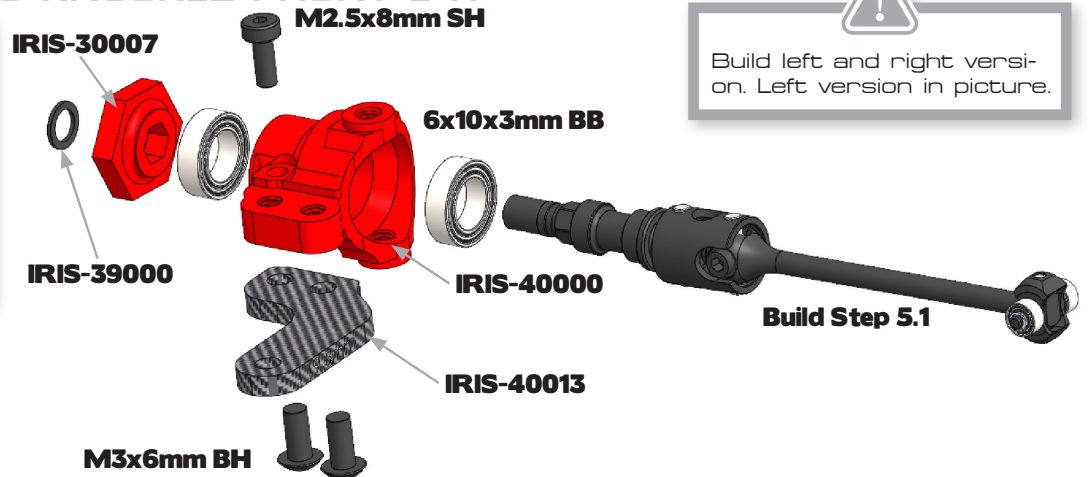
6.1

STEERING KNUCKLE FRONT L+R

x4
M3x6mm
Button Head Screw

x2
M2.5x8mm
Socket Head Screw

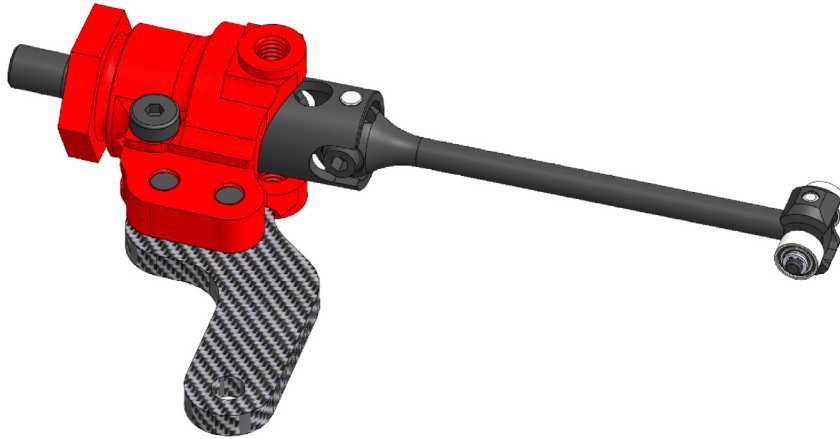
x4
6x10x3mm
Ball Bearing



Build left and right versi-
on. Left version in picture.

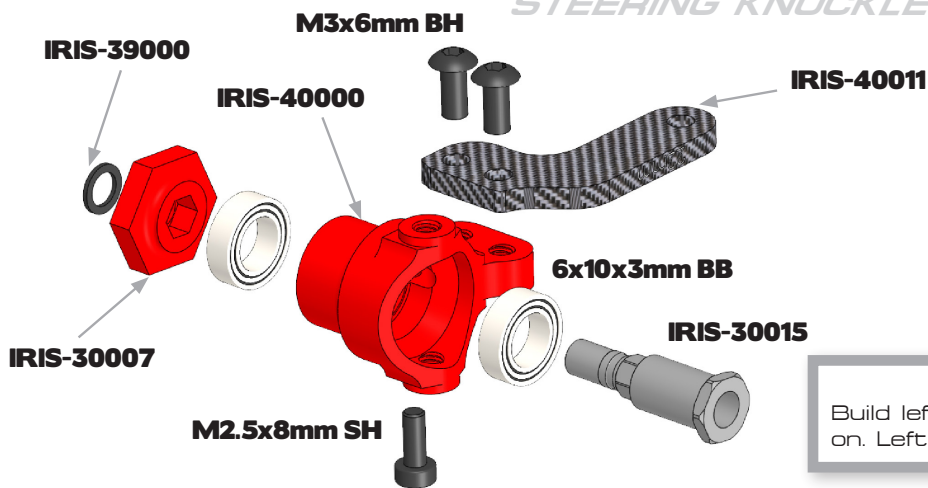
6.1

STEERING KNUCKLE FRONT L+R



6.2

STEERING KNUCKLE REAR L+R

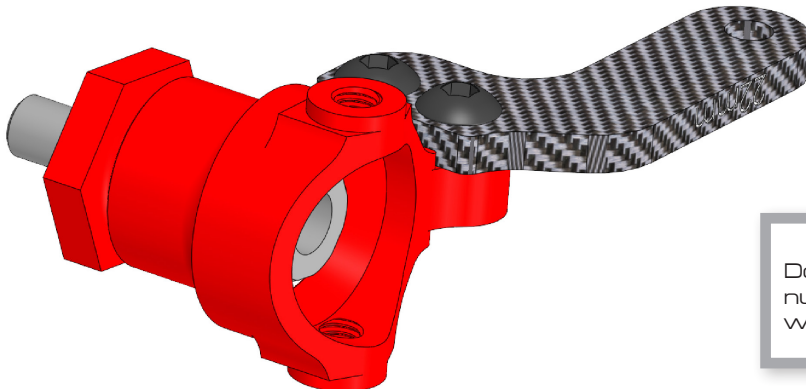



- x4**
M3x6mm
Button Head Screw
- x2**
M2.5x8mm
Socket Head Screw
- x4**
6x10x3mm
Ball Bearing


Build left and right version.
Left version in picture.

6.2

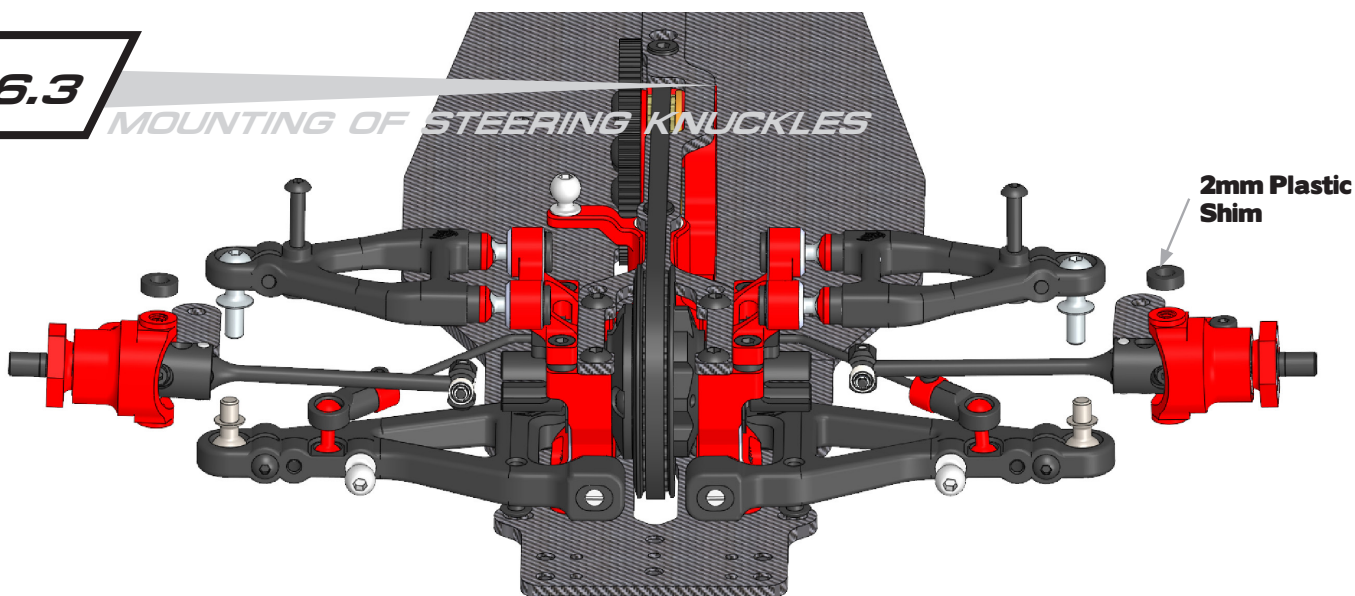
STEERING KNUCKLE REAR L+R




Do not overtighten wheel nut, otherwise wheel axle will fail.

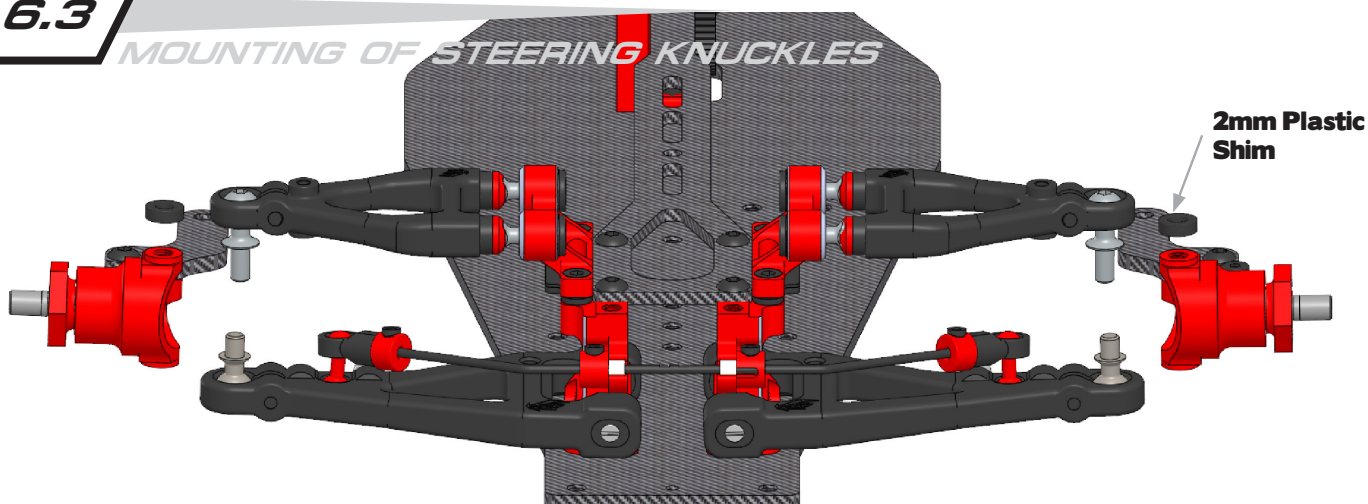
6.3

MOUNTING OF STEERING KNUCKLES



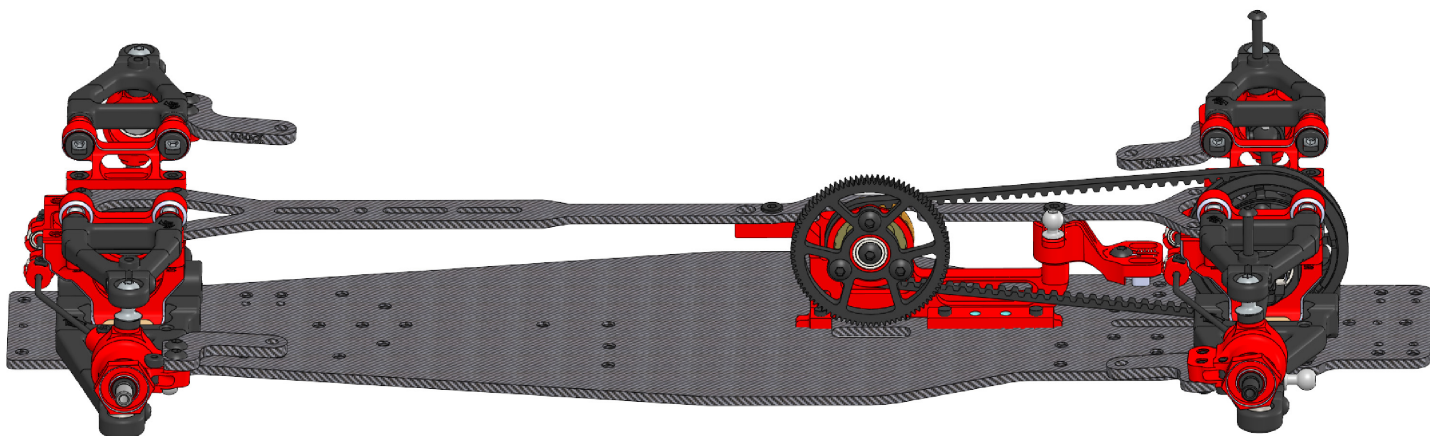
6.3

MOUNTING OF STEERING KNUCKLES



6.3

KNUCKLES MOUNTED





Insert guide shim and fill with silicone oil. Afterwards insert piston and complete shock build.

7.1

SHOCKS FRONT

Lubricate using RUDDOG Red Stuff Grease or similar.

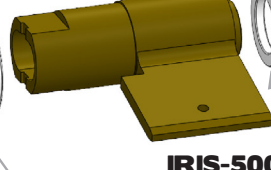
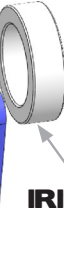
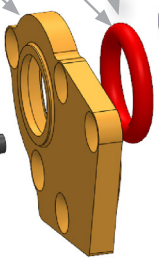
IRIS-50007 | LEFT
IRIS-50008 | RIGHT

IRIS-50018

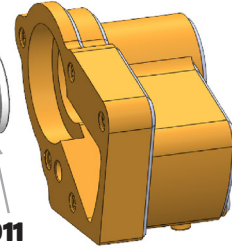
IRIS-50014

IRIS-50019 | LEFT
IRIS-50020 | RIGHT

M2x6mm CS



IRIS-50011



IRIS-50028 | LEFT
IRIS-50029 | RIGHT

x10
M2x6mm
Counter Sunk Screw



500 cst for front shocks
800 cst for rear shocks



Build left and right version. Left version in picture.



Insert guide shim and fill with silicone oil. Afterwards insert piston and complete shock build.

Lubricate using RUDDOG Red Stuff Grease or similar.

7.2

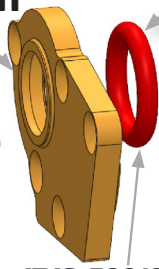
SHOCKS REAR

IRIS-50007 | LEFT
IRIS-50008 | RIGHT

IRIS-75016 | LEFT
IRIS-75017 | RIGHT

IRIS-50028 | LEFT
IRIS-50029 | RIGHT

M2x6mm CS



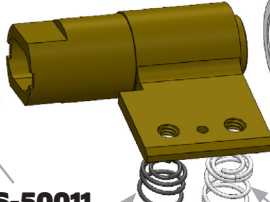
IRIS-50018



IRIS-50014

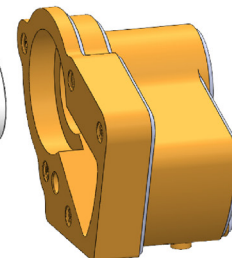


IRIS-75020



IRIS-50011

IRIS-75018



IRIS-75021

x10
M2x6mm
Counter Sunk Screw



Build left and right version. Left version in picture.



Build left and right version.

7.3

FRONT ROCKERS

RIGHT Version

IRIS-50035

LEFT Version

IRIS-50034

M2x4mm CS

M2x4mm CS

x4
M2x4mm
Counter Sunk Screw

x2
M2x5mm
Socket Head Screw



IRIS-50031



IRIS-50030

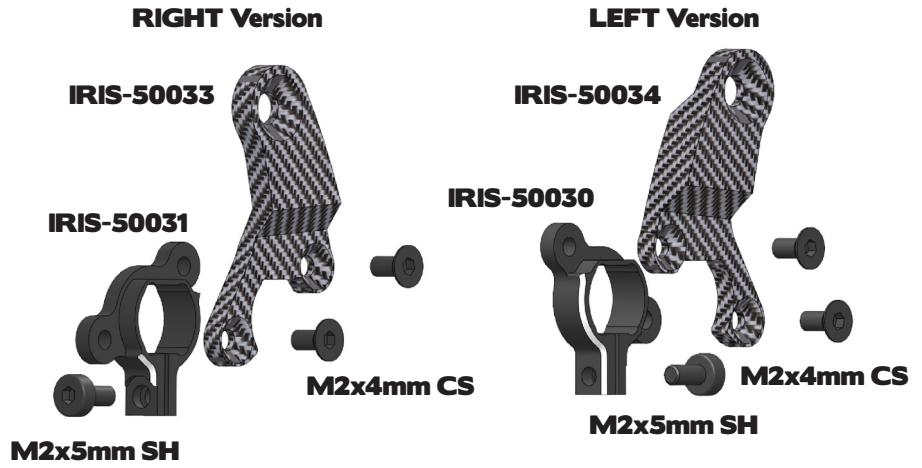
M2x5mm SH


Build left and right version.

7.4

REAR ROCKERS

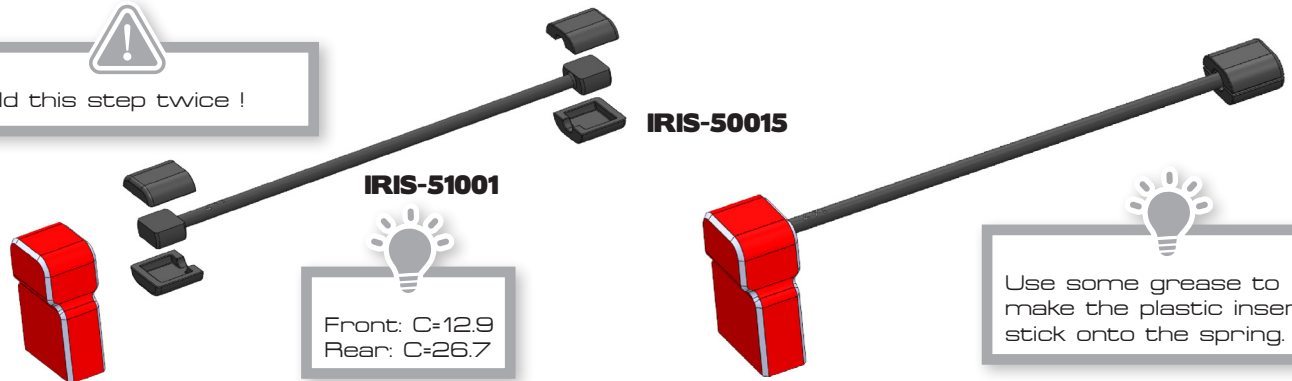
- x4**
M2x4mm
Counter Sunk Screw
- x2**
M2x5mm
Socket Head Screw




7.5

SPRING MOUNTS FRONT

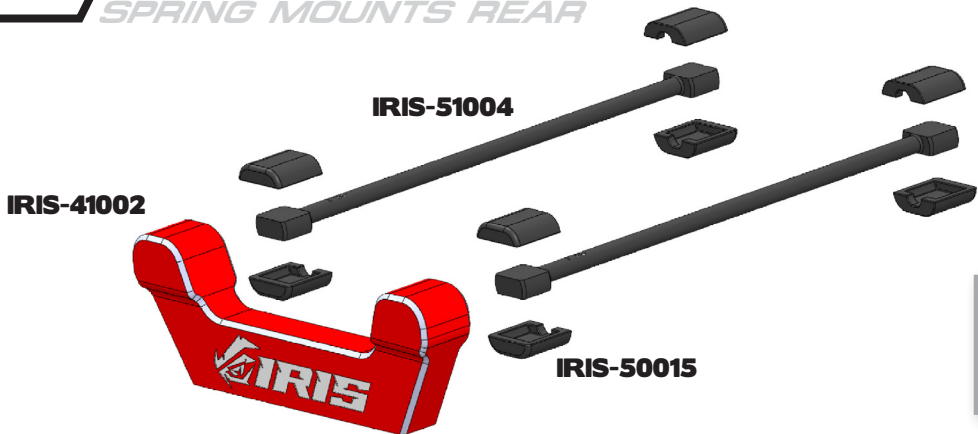

Build this step twice !





Use some grease to make the plastic inserts stick onto the spring.

7.6

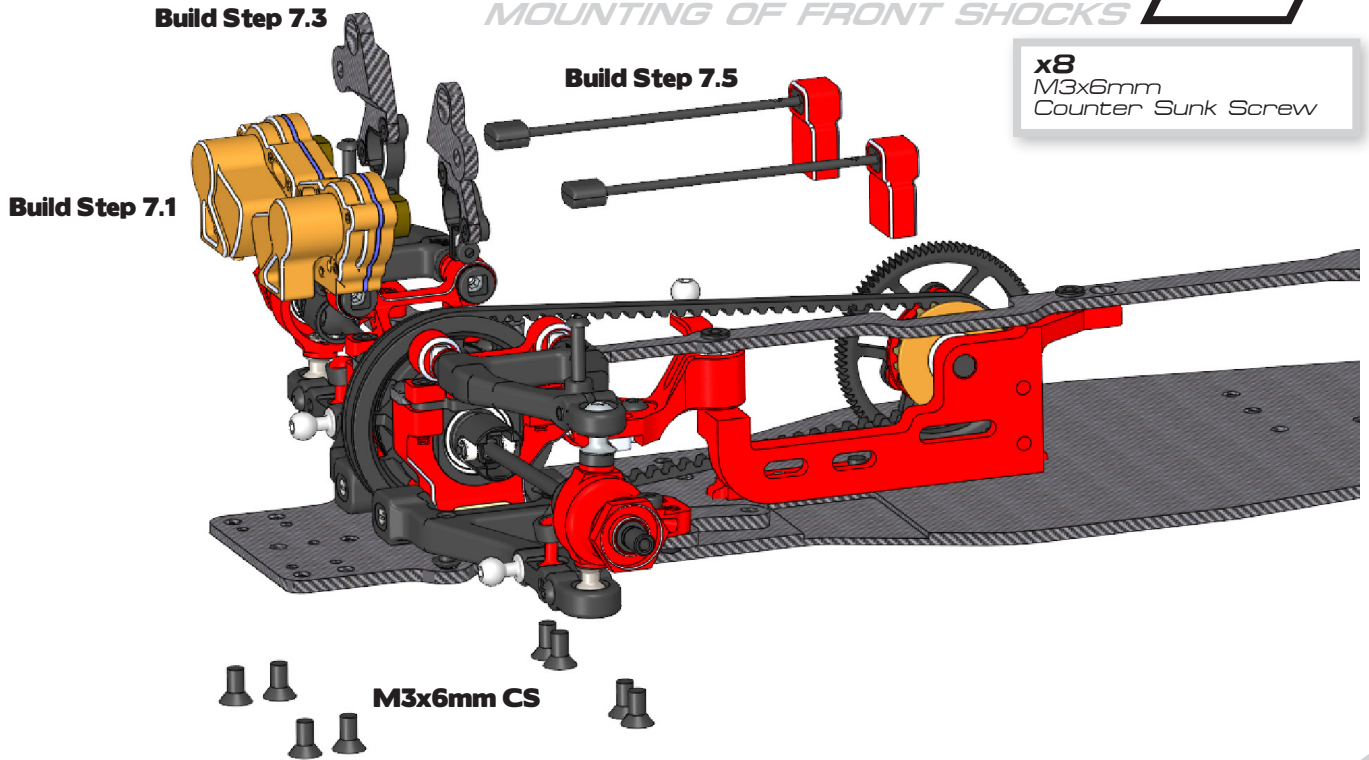
SPRING MOUNTS REAR




Use some grease to make the plastic inserts stick onto the spring.

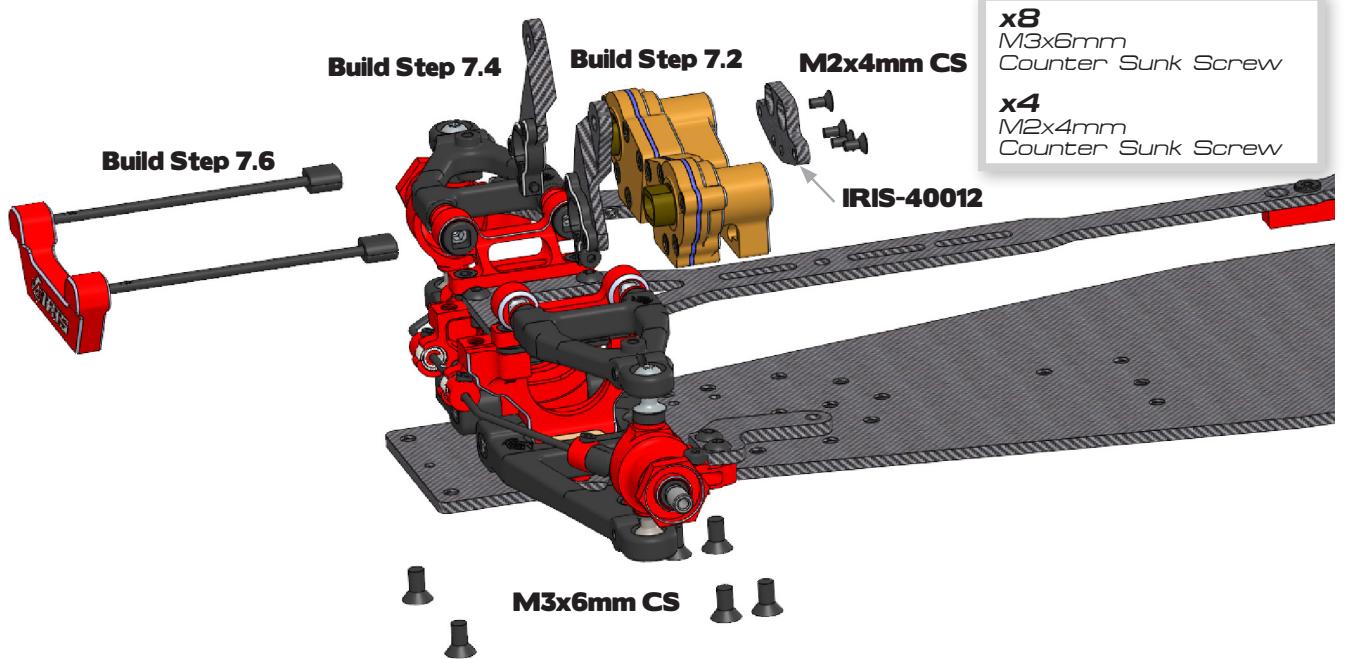
7.6

MOUNTING OF FRONT SHOCKS



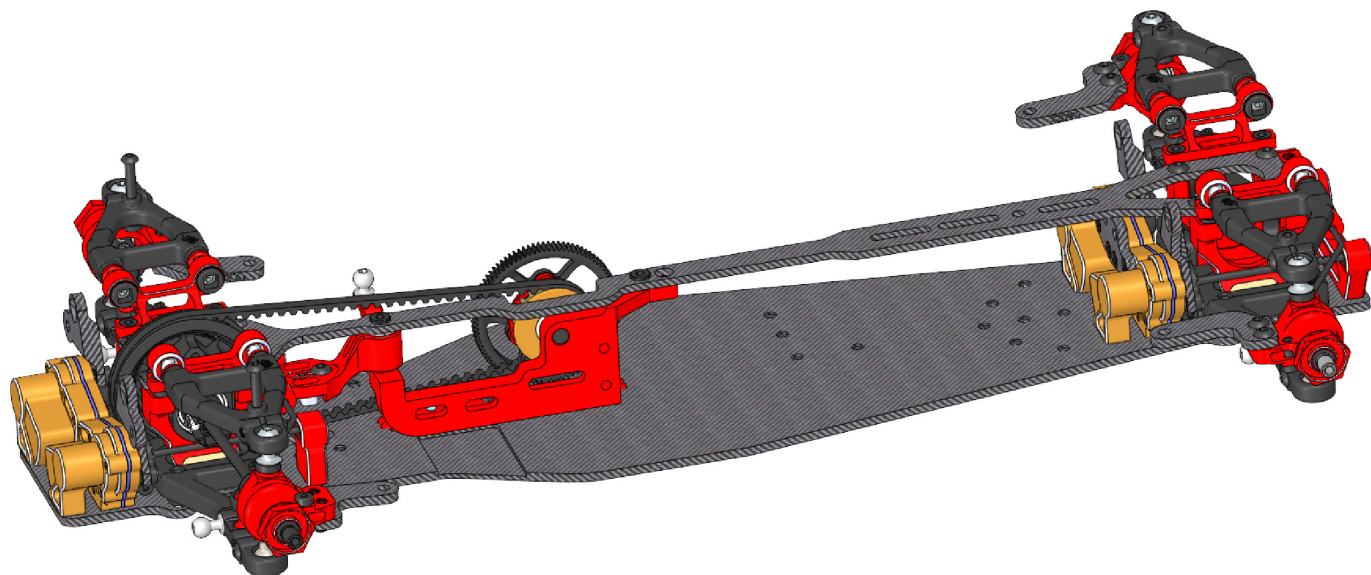
7.6

MOUNTING OF REAR SHOCKS



7.6

SHOCKS MOUNTED



8.1

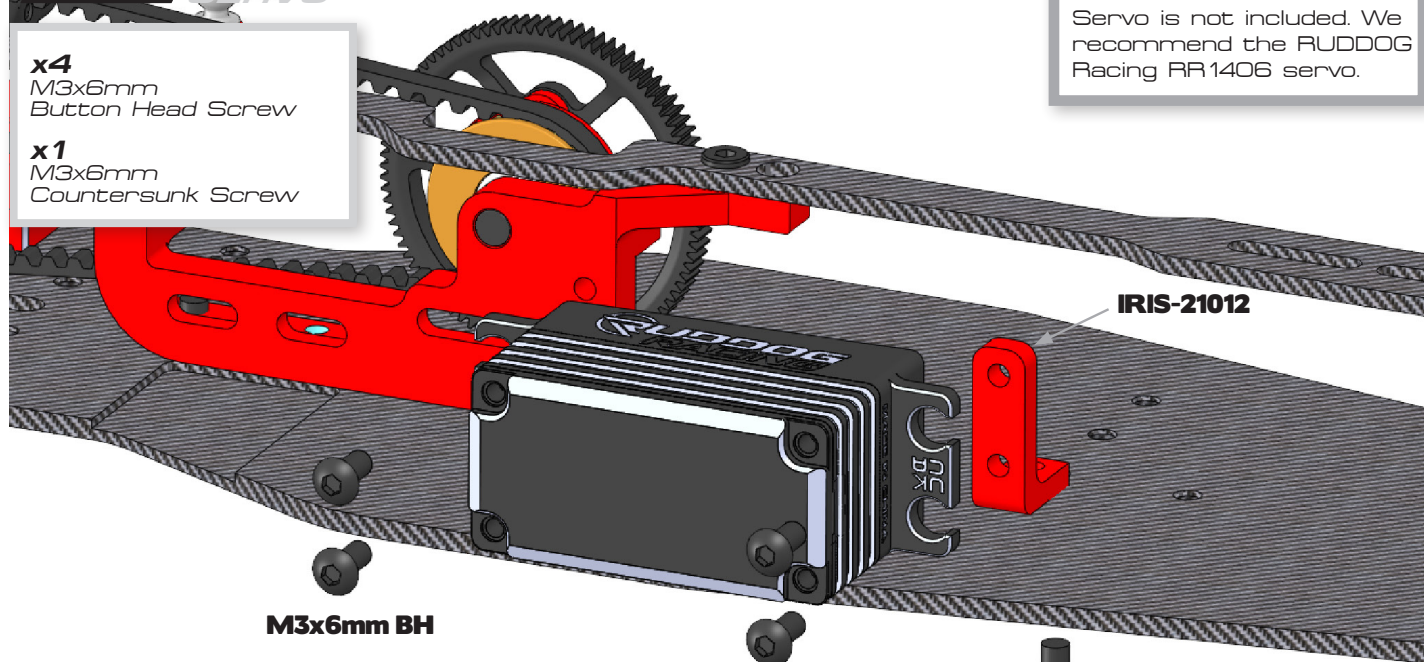
SERVO

x4
M3x6mm
Button Head Screw

x1
M3x6mm
Countersunk Screw



Servo is not included. We recommend the RUDDOG Racing RR1406 servo.



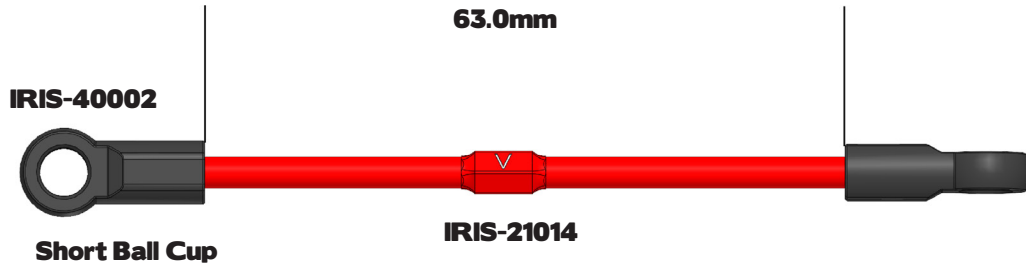
IRIS-21012

M3x6mm BH

M3x6mm CS

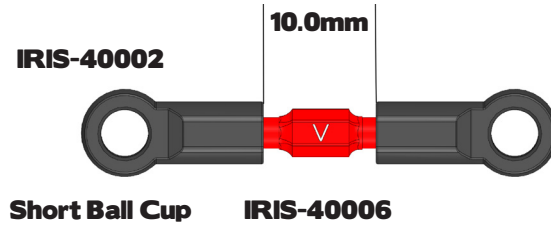
9.1

SERVO LINK



9.2

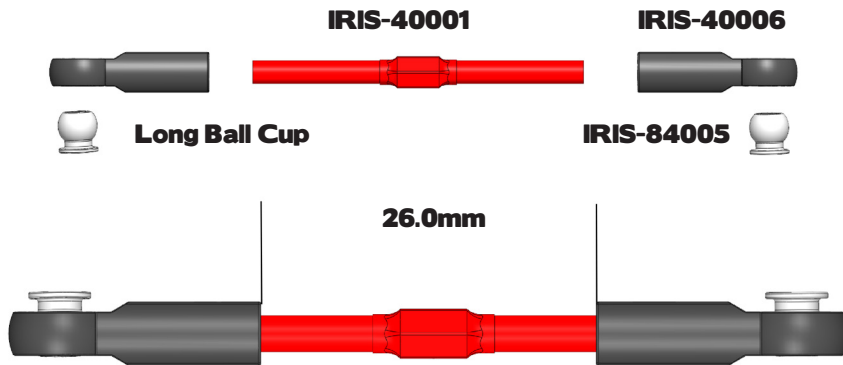
SHOCK LINK




Build the shock link 4 times!

9.3

FRONT STEERING LINKS



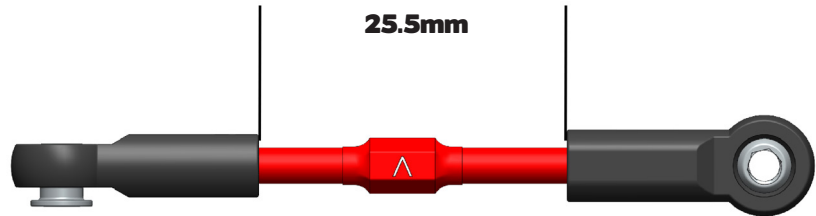

Build this step twice!

9.4

REAR SUSPENSION LINKS



Build this step twice!



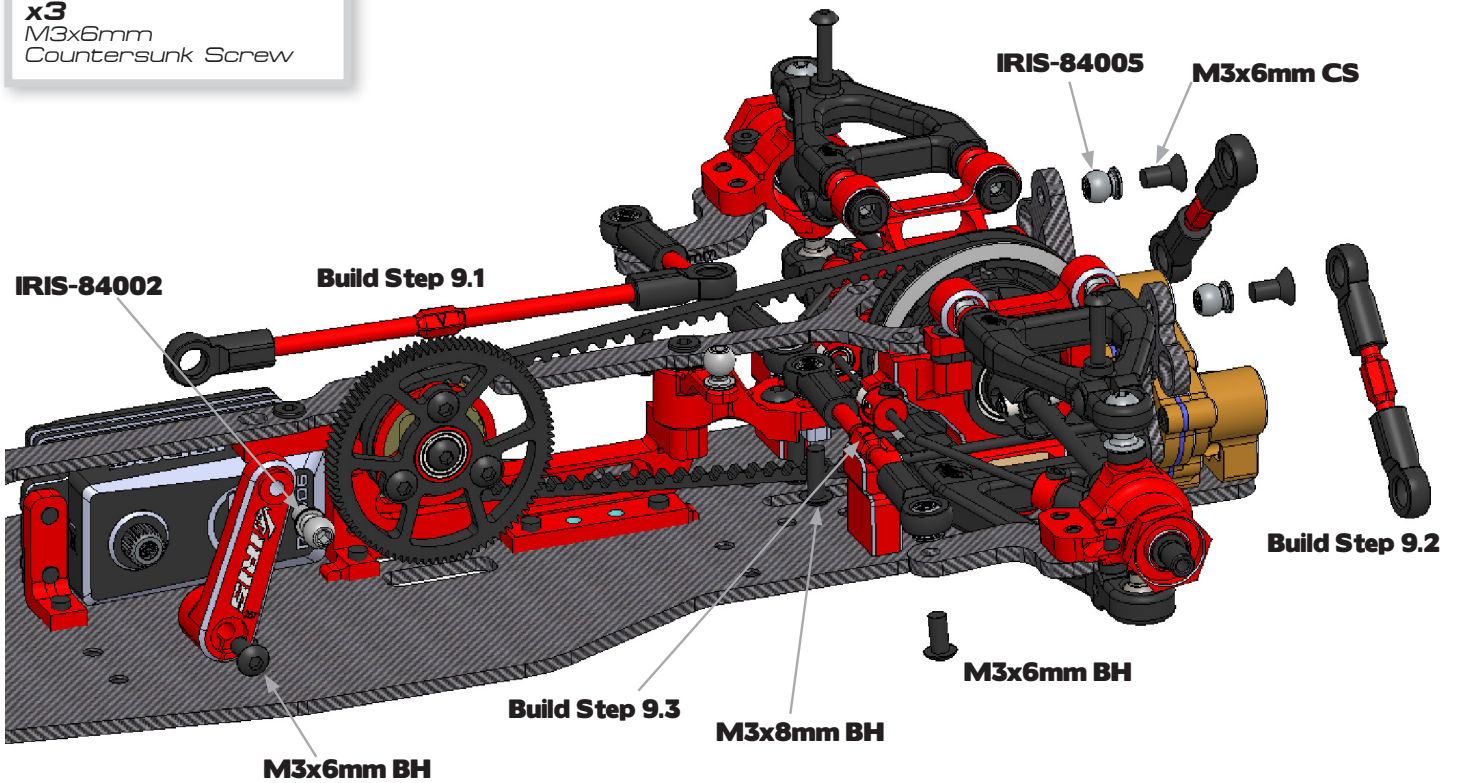
9.5

MOUNTING OF FRONT LINKS

x3
M3x6mm
Button Head Screw

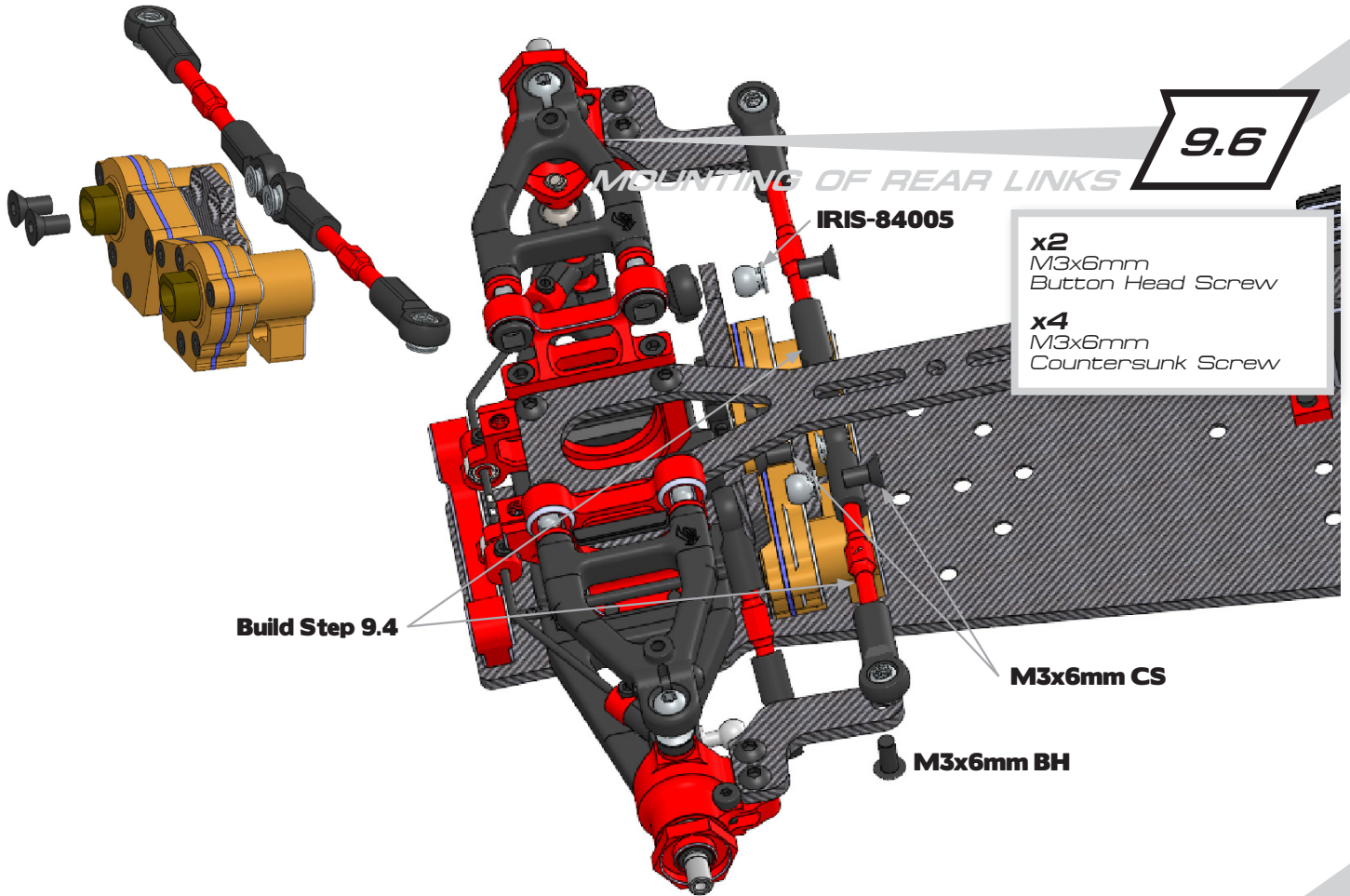
x2
M3x8mm
Button Head Screw

x3
M3x6mm
Countersunk Screw



9.6

MOUNTING OF REAR LINKS



IRIS-84005

- x2**
M3x6mm
Button Head Screw
- x4**
M3x6mm
Countersunk Screw

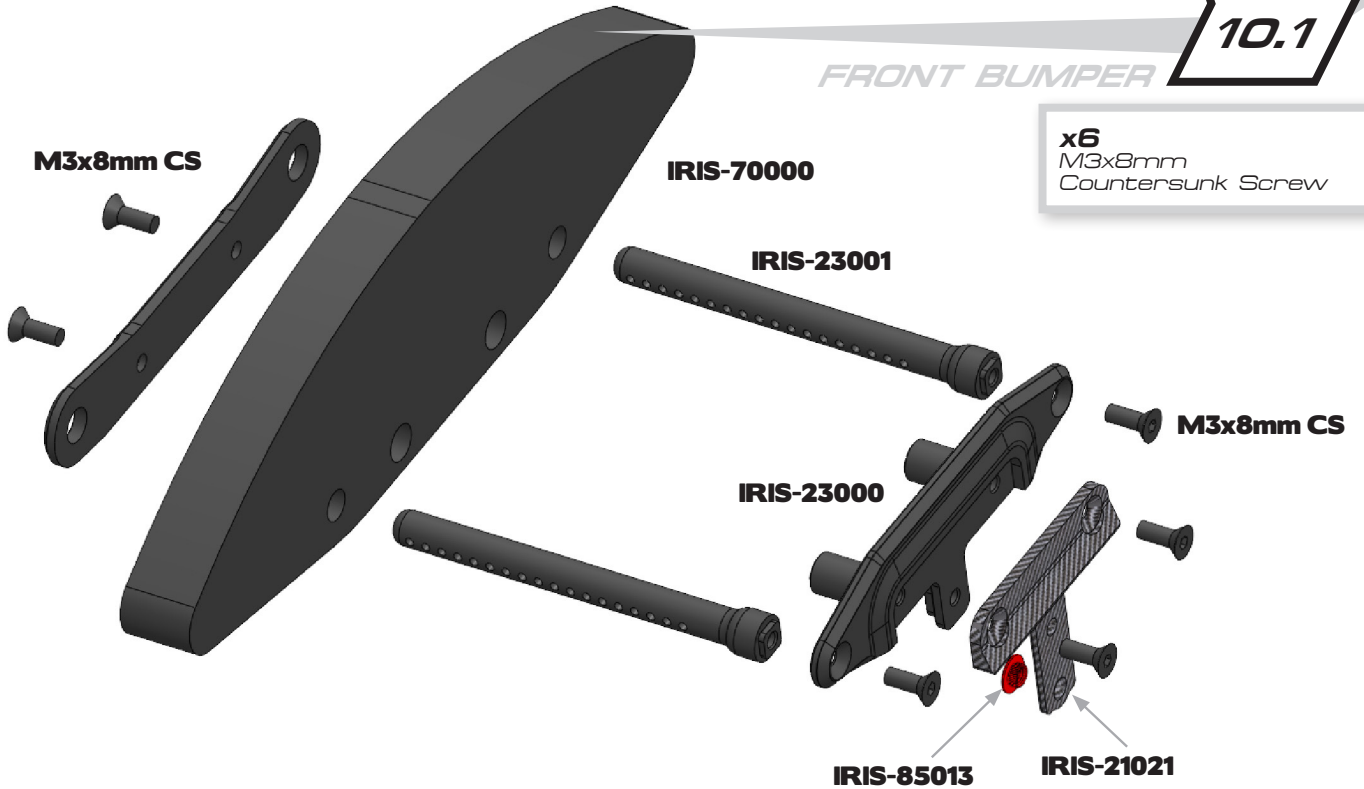
Build Step 9.4

M3x6mm CS

M3x6mm BH

10.1

FRONT BUMPER



M3x8mm CS

IRIS-70000

- x6**
M3x8mm
Countersunk Screw

IRIS-23001

M3x8mm CS

IRIS-23000

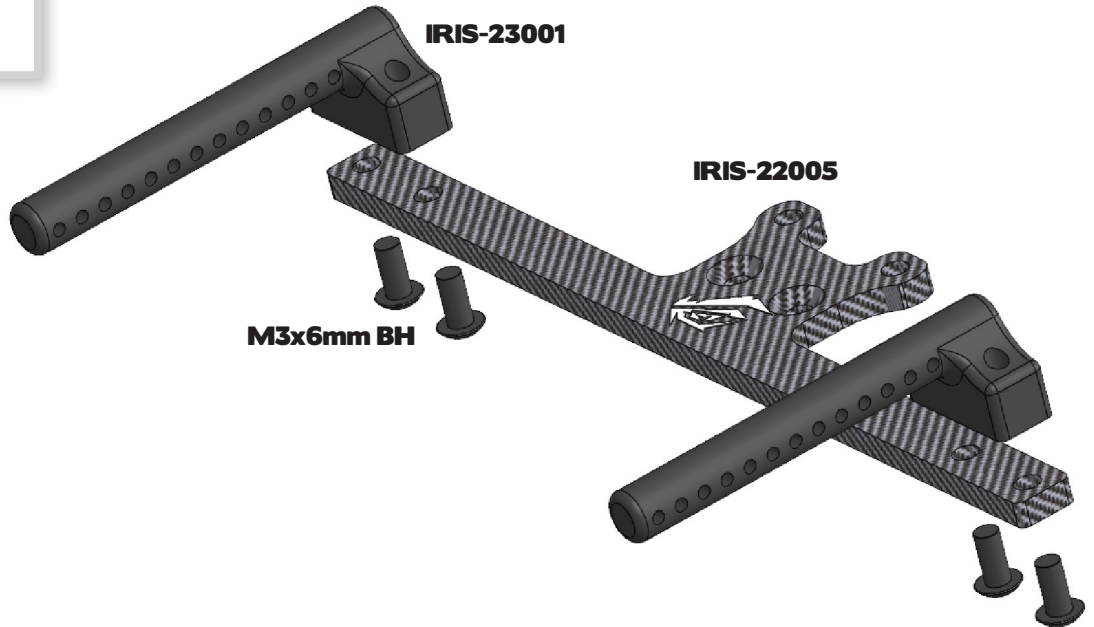
IRIS-85013

IRIS-21021

10.2

REAR BODY MOUNT

x4
M3x6mm
Button Head Screw



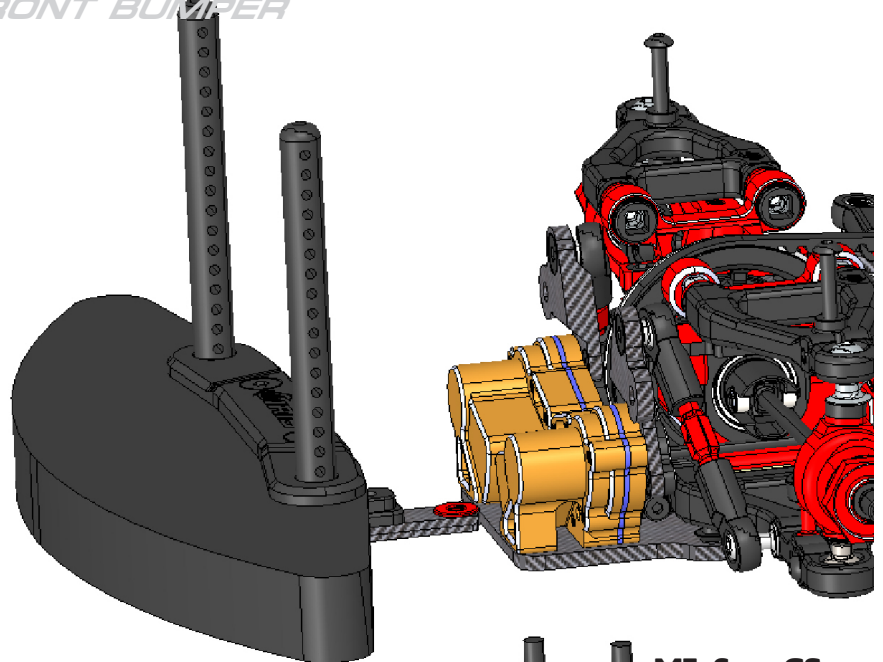
10.3

MOUNTING THE FRONT BUMPER

x1
M3x6mm
Countersunk Screw

x1
M3x8mm
Countersunk Screw

Build Step 10.1

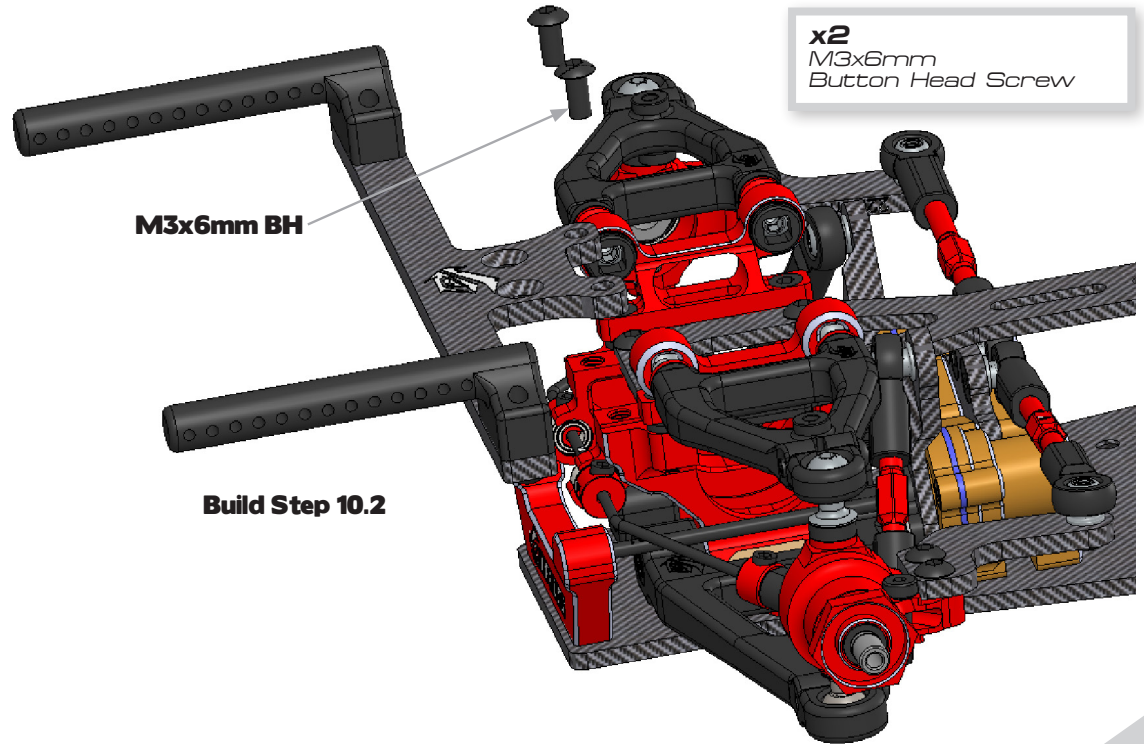


M3x8mm CS

M3x6mm CS

10.4

MOUNTING OF THE REAR BODY



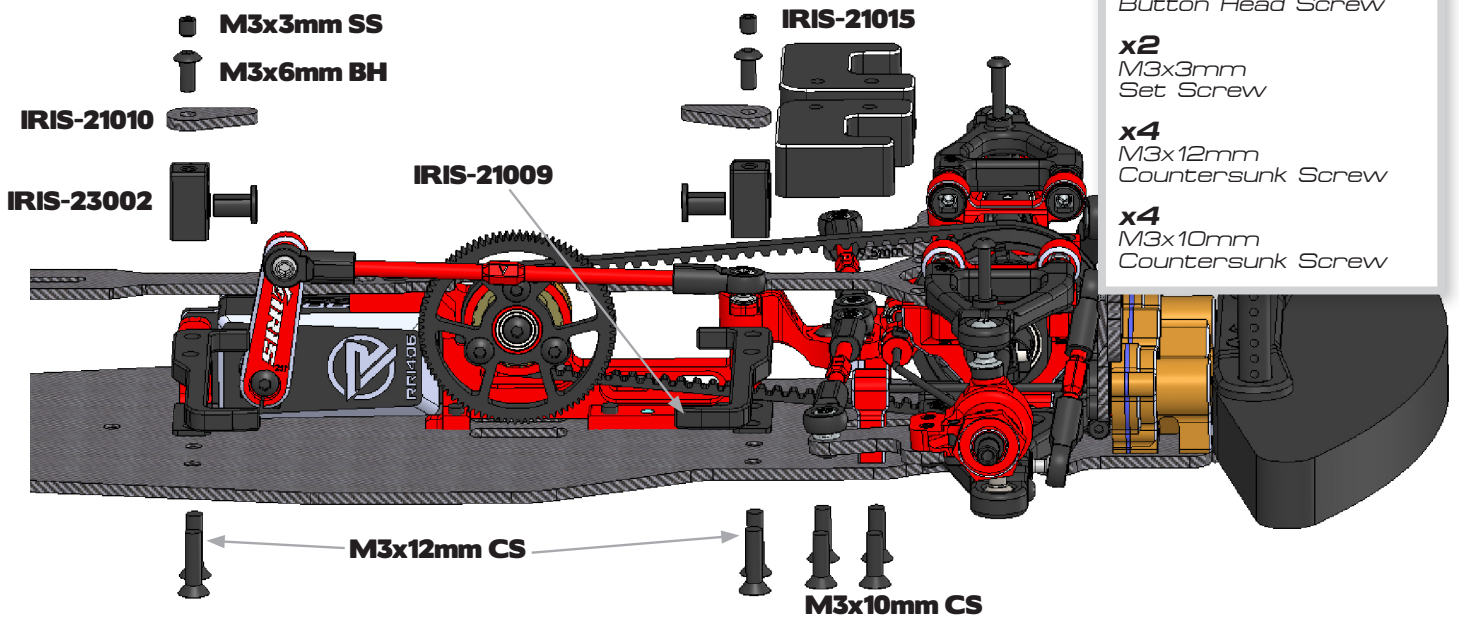
x2
M3x6mm
Button Head Screw

M3x6mm BH

Build Step 10.2

10.5

INSTALL BATTERY MOUNT AND WEIGHTS



x2
M3x6mm
Button Head Screw

x2
M3x3mm
Set Screw

x4
M3x12mm
Countersunk Screw

x4
M3x10mm
Countersunk Screw

M3x3mm SS

M3x6mm BH

IRIS-21010

IRIS-23002

IRIS-21009

IRIS-21015

M3x12mm CS

M3x10mm CS

IRIS

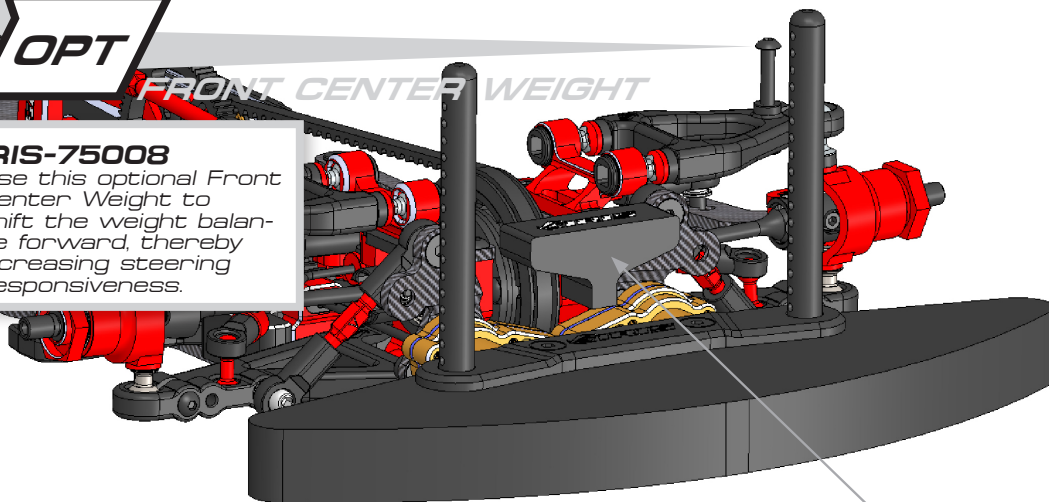
OPTION PARTS

OPT

FRONT CENTER WEIGHT

IRIS-75008

Use this optional Front Center Weight to shift the weight balance forward, thereby increasing steering responsiveness.



M3x12mm CS

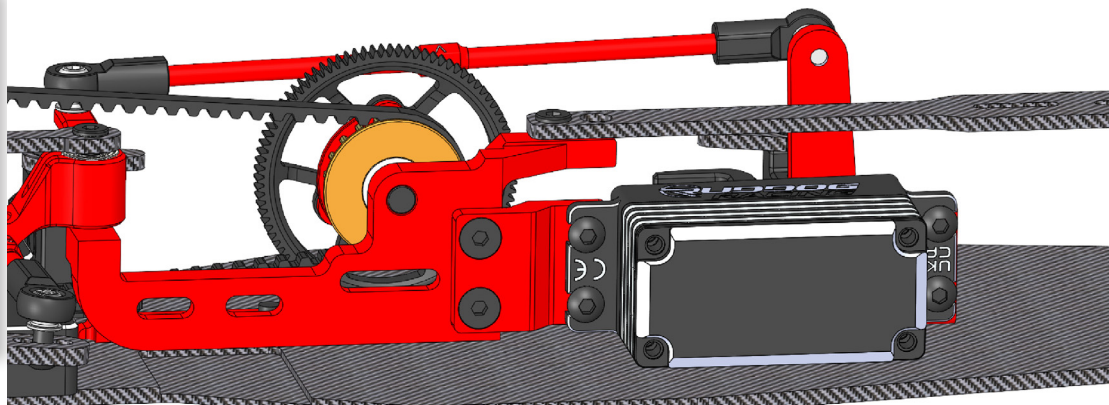
IRIS-75008

OPT

+15MM SERVO MOUNT SET

IRIS-75006

This set repositions the servo 15mm further back, allowing you to mount a large speed controller, such as the Hobbywing Xerun XR10 Justock, directly behind the motor. Depending on the size and weight of the battery used, this adjustment can improve the weight balance of the ONE.05 FWD.

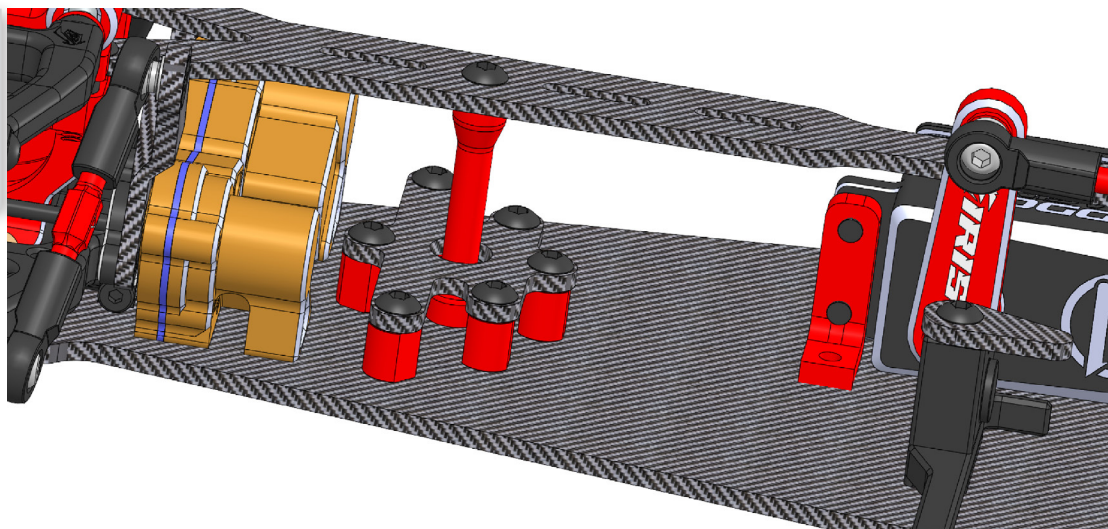


OPT

REAR CHASSIS STIFFENER SET

IRIS-22008

The Rear Chassis Stiffener reduces the overall flex of the chassis. This optional part is recommended for use on high-grip tracks.



OPT

ALUMINIUM DIFFERENTIAL COVER

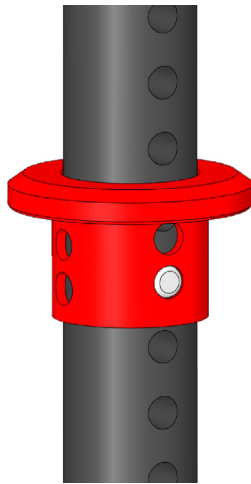


IRIS-32010

The Aluminum Differential Cover not only adds aesthetic appeal, but it also enhances the sealing and consistency of your differential.

OPT

BODY POST HEIGHT ADJUSTMENT

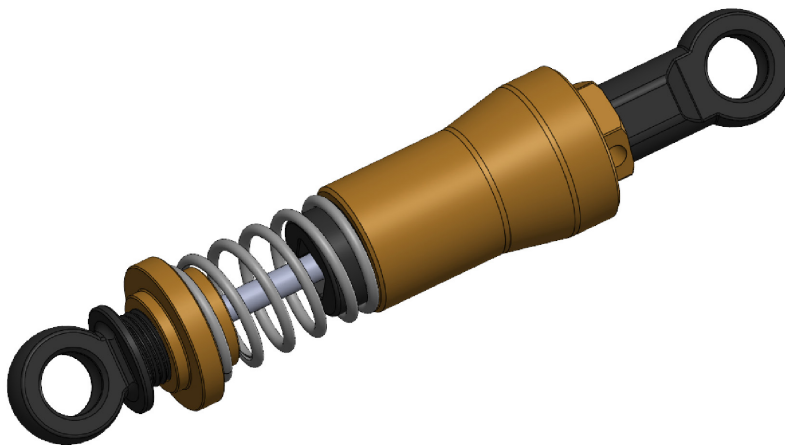


IRIS-75000

The Body Post Height Adjustment Set enables you to easily modify the body height while also enhancing the appearance of your car.

OPT

HEAVE SHOCK SET



IRIS-50027

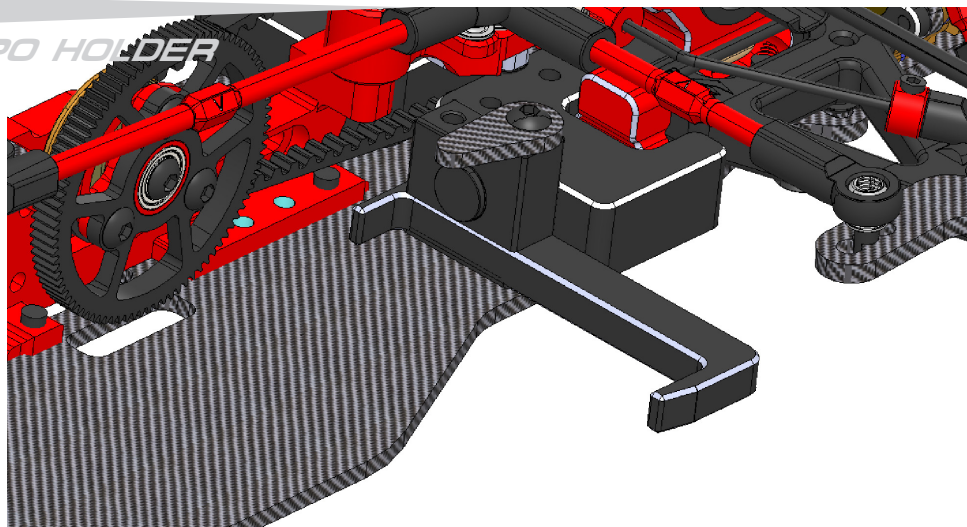
The front heave shock is particularly recommended for FWD vehicles with a forward weight bias, especially on medium to large tracks.

OPT

STEEL LIPO HOLDER

IRIS-75005

The Steel Lipo Holder allows you to add extra weight to the front of the car, shifting the weight bias further forward.

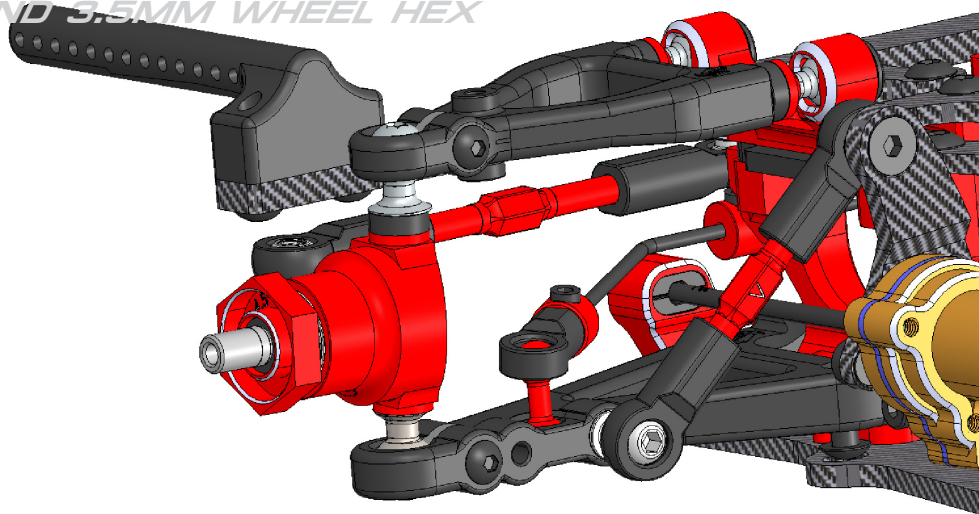


OPT

4.5MM AND 3.5MM WHEEL HEX

IRIS-30013 IRIS-30014

The 3.5mm and 4.5mm Wheel Hexes for the Iris One allow you to easily adjust the track width according to your needs. These changes have a significant impact on how your car behaves during corner entry and exit.

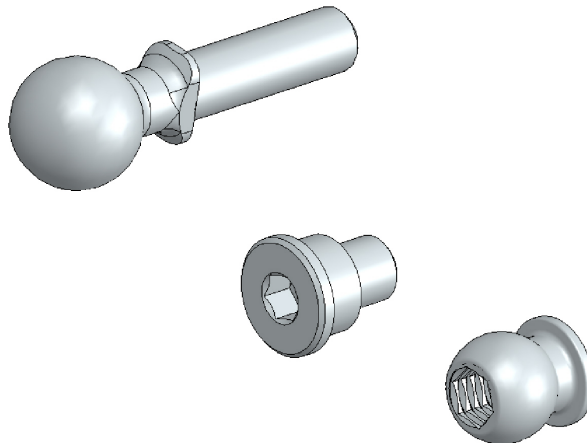


OPT

TITANIUM BALLSTUDS AND SCREWS

IRIS-84006- IRIS-84011

An easy way to reduce the weight of your Iris ONE is by using our line of titanium ball studs and screws, specifically designed for the Iris ONE.



GEAR UP, SPEED UP:

CHOOSE RUDDOG FOR YOUR IRIS ONE.05.



1/10 TOURING TIRE HEATING SYSTEM



HD LIPO CHARGING BAG



RSS65 SOLDERING STATION 65W



CAR BAG - 1/10 TOURING CAR



ONROAD ALUMINIUM CAR STAND



SMALL RACING BAG



RUDDOG.EU

www.iris-racing.com



RUDDOG
Distribution GmbH
Sägewerkstr. 16
83416 Saaldorf-Surheim
GERMANY

Email: support@ruddog.eu
Tel: +49 8654 5894818

