



IRIS

IRIS ONE.1 COMPETITION TOURING CAR KIT

.1

#RACEIRIS

Thank you for purchasing the IRIS ONE.1 Touring Car.

Over the last two years since the release of the original IRIS ONE, we have undertaken extensive learning, testing, improving, and optimizing. The IRIS ONE.1 is the culmination of these efforts.

Our team drivers have been racing and testing around the globe, competing against the toughest opponents. The results speak for themselves — multiple podium finishes, victories, and even a TITC championship title. These achievements have not only validated our platform but also allowed us to develop it further under the most demanding conditions and race series worldwide. All of the improvements in this model have been race-proven, and include:

- *New, harder plastic upper and lower A-arms for increased corner stability and speed.*
- *New rear active toe linkage for more consistent cornering and a more precise rear end.*
- *Improved flex with a split one-piece design top-deck for better handling.*
- *New rear shock stiffener for enhanced rear traction and corner speed.*
- *Now includes our innovative internal shock spring system for the rear shocks, improving handling and cornering speed.*

At IRIS, we aim high, embracing the risks that come with innovation, all to offer you the best possible product. Your trust in us fuels our passion, and we genuinely thank you for being part of this journey with IRIS.

We hope that you enjoy the IRIS ONE.1, a testament to our never-ending quest for excellence.

For setups, PDF manuals or other information, please visit our website www.iris-racing.com:



GEAR UP WITH RUDDOG:

THE ESSENTIAL TOOLS FOR YOUR IRIS ONE.1.



CURVED SCISSORS

MICRO PLIERS

STRAIGHT SCISSORS

7.0MM NUT DRIVER WRENCH

5.5MM NUT DRIVER WRENCH

2.5MM HEX DRIVER WRENCH

2.0MM HEX DRIVER WRENCH

1.5MM HEX DRIVER WRENCH

CLEANING BRUSH

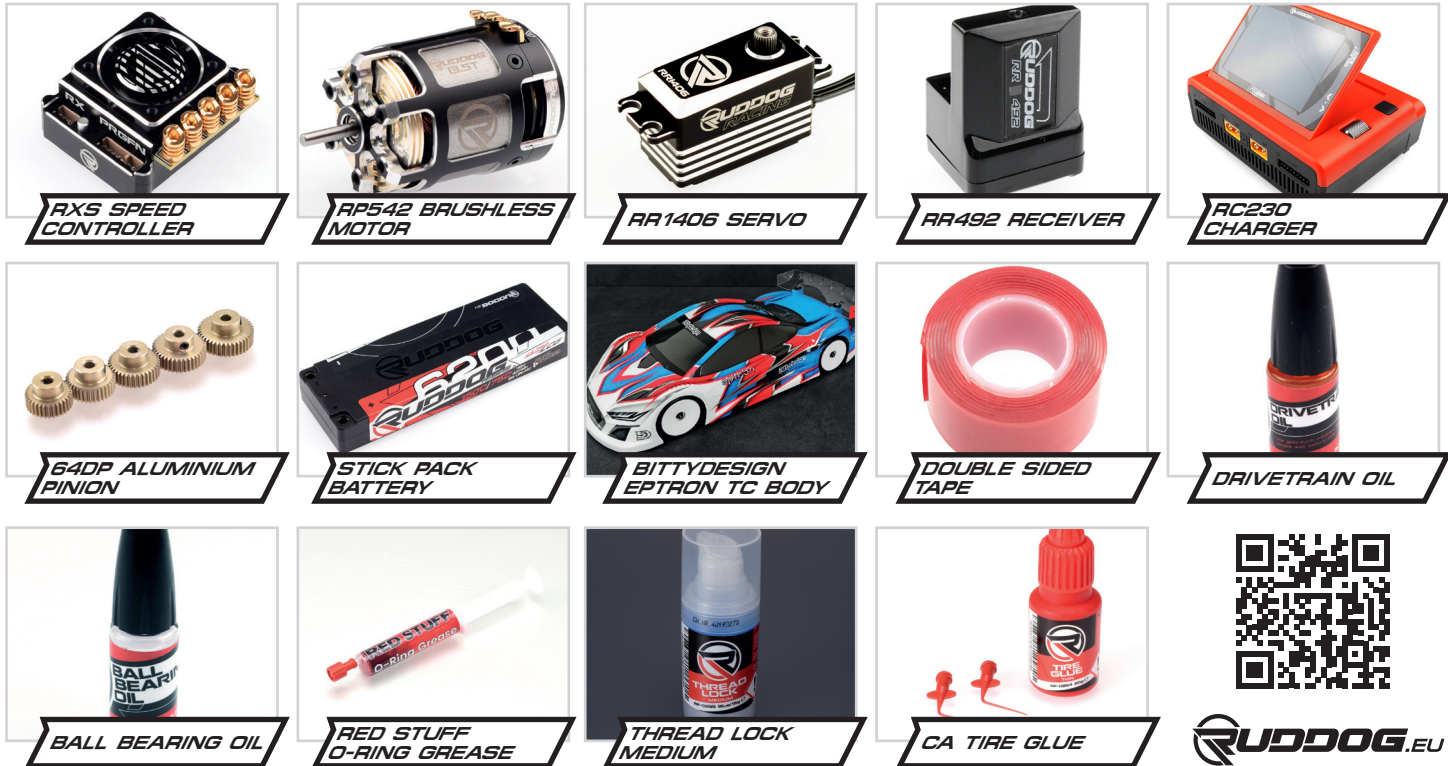
TWEEZERS

HOBBY KNIFE

BODY REAMER

RACE AHEAD WITH RUDDOG:

ESSENTIAL RACING EQUIPMENT FOR YOUR IRIS ONE.1.



RXS SPEED CONTROLLER

RP542 BRUSHLESS MOTOR

RR1406 SERVO

RR492 RECEIVER

RC230 CHARGER

64DP ALUMINIUM PINION

STICK PACK BATTERY

BITTYDESIGN EPTRON TC BODY

DOUBLE SIDED TAPE

DRIVETRAIN OIL

BALL BEARING OIL

RED STUFF O-RING GREASE

THREAD LOCK MEDIUM

CA TIRE GLUE



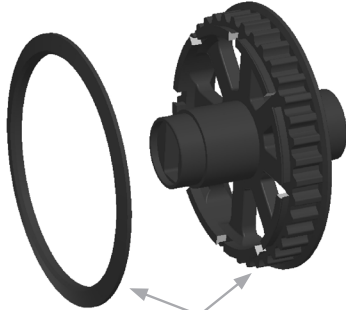
RUDDOG.EU

1.1

SPOOL

M3x8mm CS

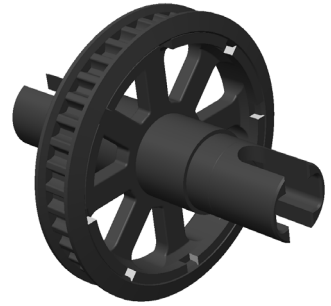
x2
M3x8mm
Countersunk Screw



IRIS-32005

IRIS-32002

M3x8mm CS



Please note
direction.
Steep angle
inside

1.2

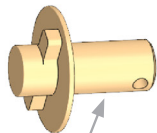
DIFFERENTIAL

Lubricate using
RUDDOG Red Stuff
Grease or similar.

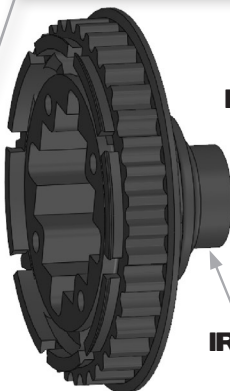
IRIS-32004



IRIS-32000



IRIS-32011



IRIS-32006

IRIS-83000



IRIS-32008



IRIS-32001

1.2

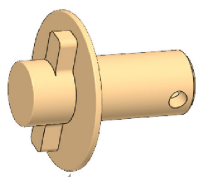
DIFFERENTIAL

Lubricate using
RUDDOG Red Stuff
Grease or similar.

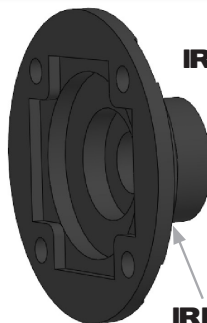
IRIS-32004



IRIS-32000



IRIS-32011



IRIS-32006

IRIS-83000



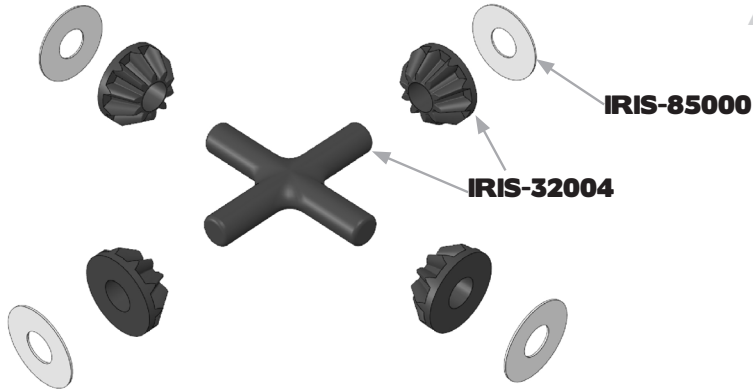
IRIS-32008



IRIS-32001

1.2

DIFFERENTIAL



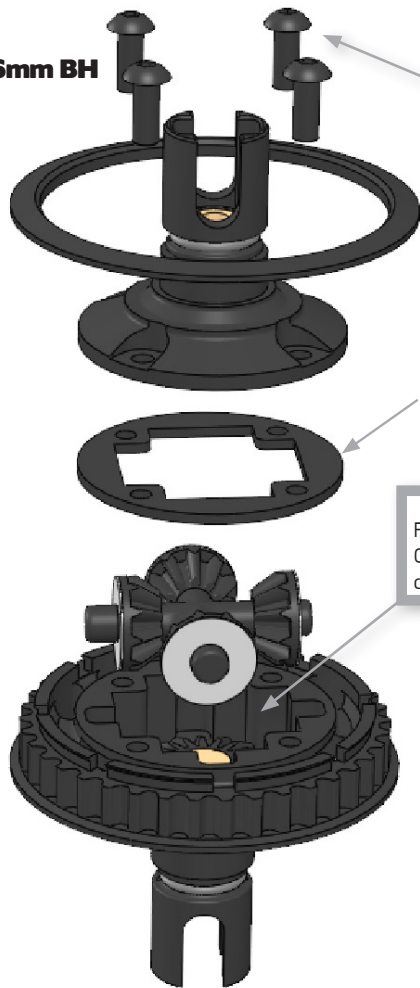
1.2

DIFFERENTIAL

M2.5x6mm BH

Do not overtighten.

x4
M2.5x6mm
Button Head Screw



Fill with 1.0g of Silicone Oil. We recommend 5k cst as starting point.

1.3

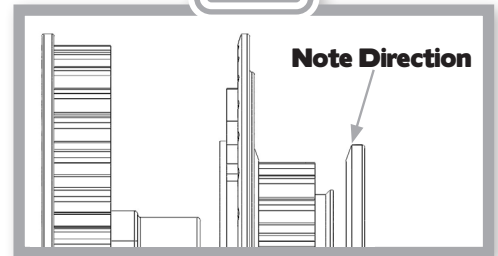
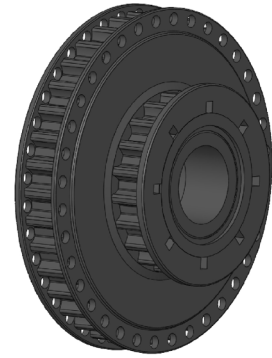
FRONT MIDDLE GEAR



Front version has a round shape.



IRIS-32007

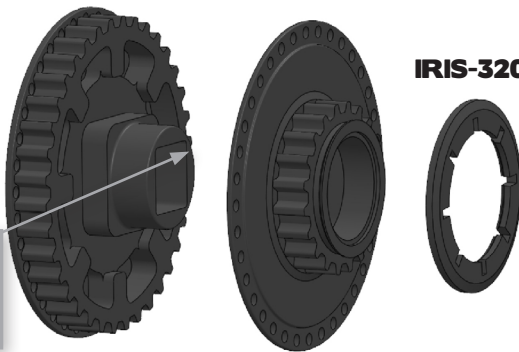


1.4

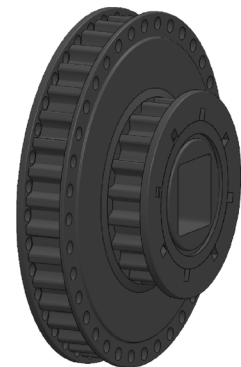
REAR MIDDLE GEAR



Rear version has a square shape.

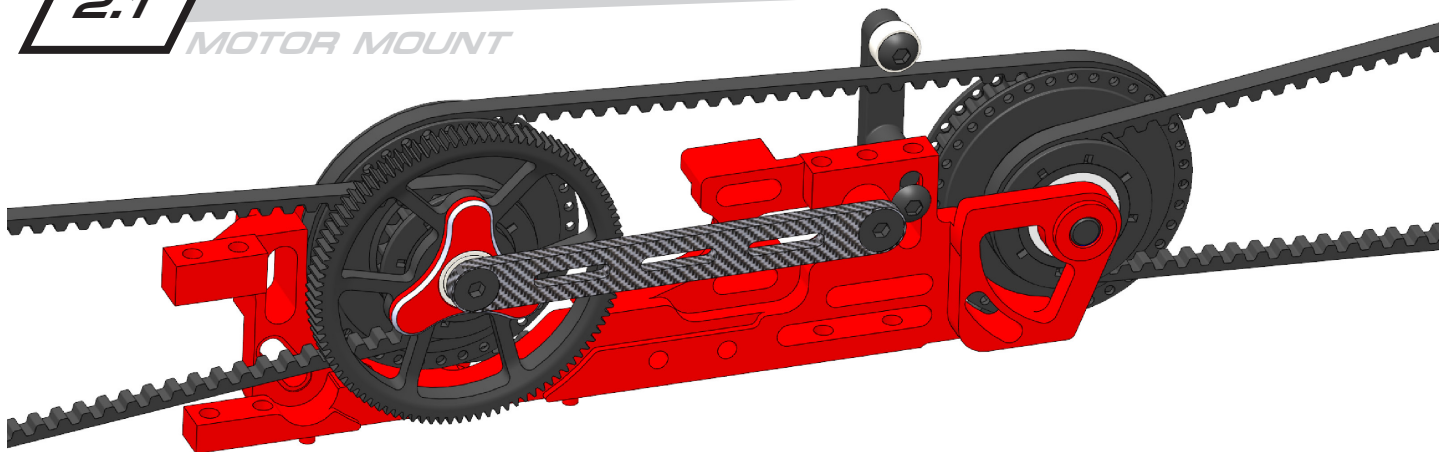


IRIS-32007



2.1

MOTOR MOUNT



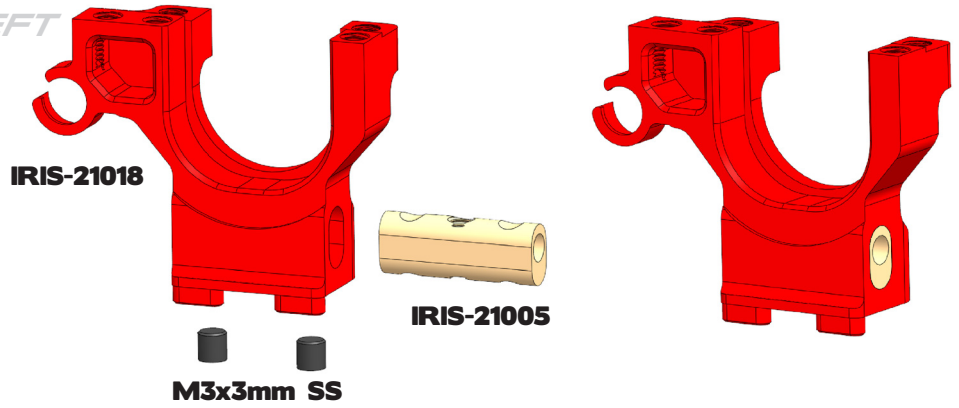
2.2

BULKHEAD LEFT

x4
M3x3mm
Set Screw



Build this step twice !



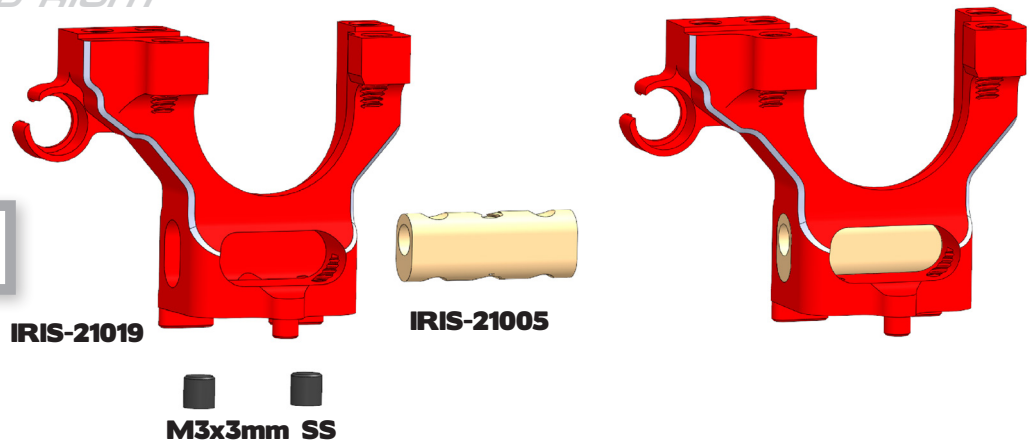
2.3

BULKHEAD RIGHT

x4
M3x3mm
Set Screw

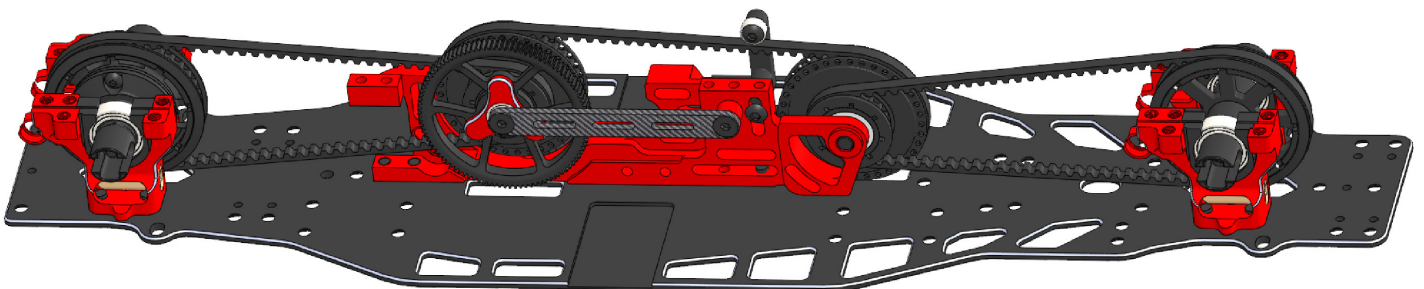


Build this step twice !



3.1

CHASSIS





Start with #1 inserts with the number facing the direction of the motor / center of the chassis to get the correct belt tension.



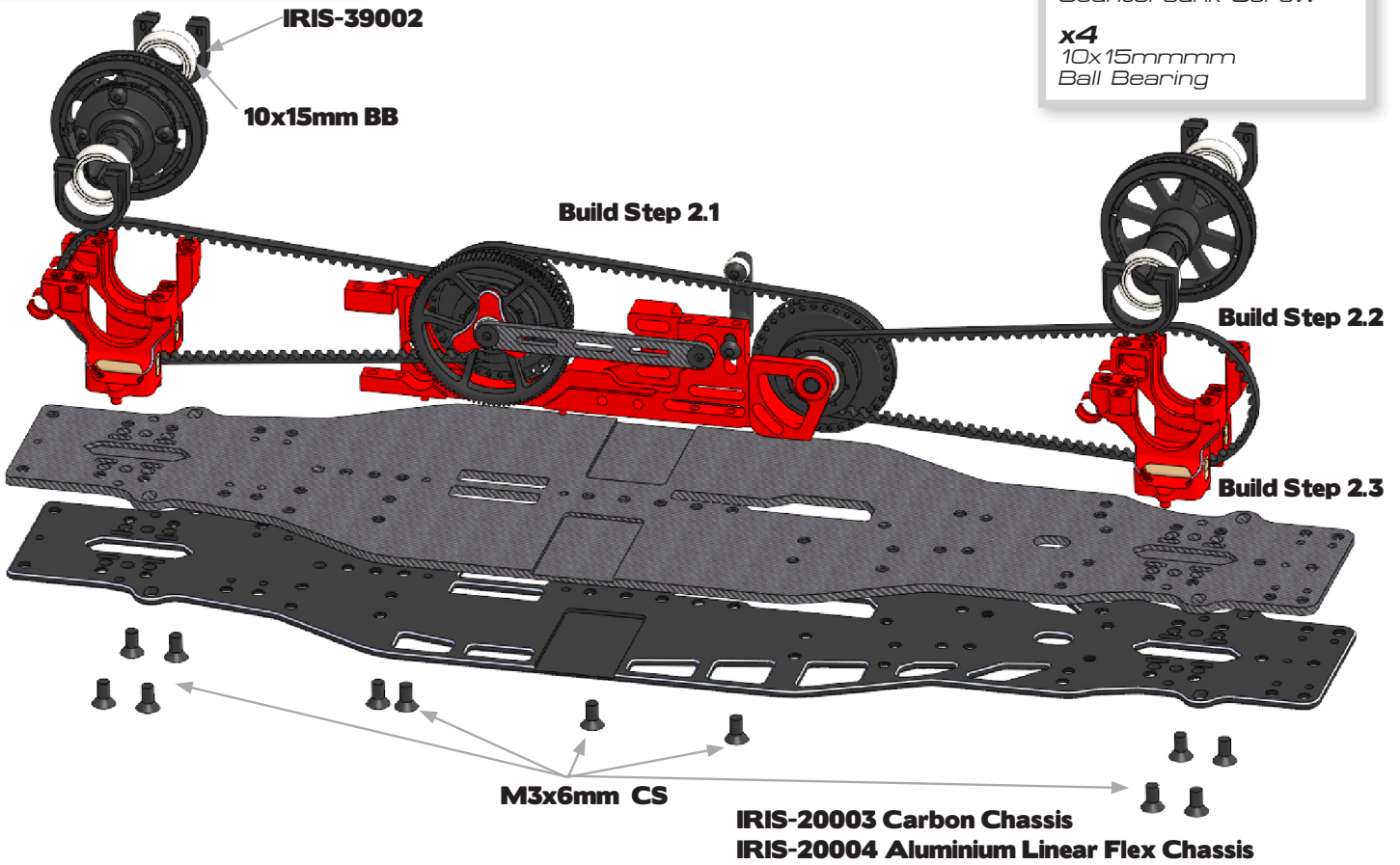
Internal drive ratio is 1.9

3.1

CHASSIS

x12
M3x6mm
Countersunk Screw

x4
10x15mmmm
Ball Bearing



3.2

TOPDECK

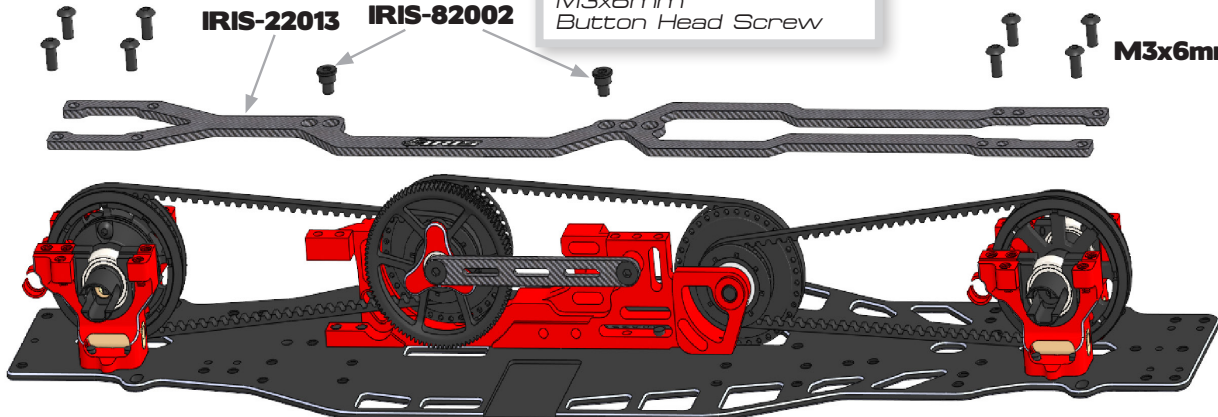
M3x6mm BH

IRIS-22013

IRIS-82002

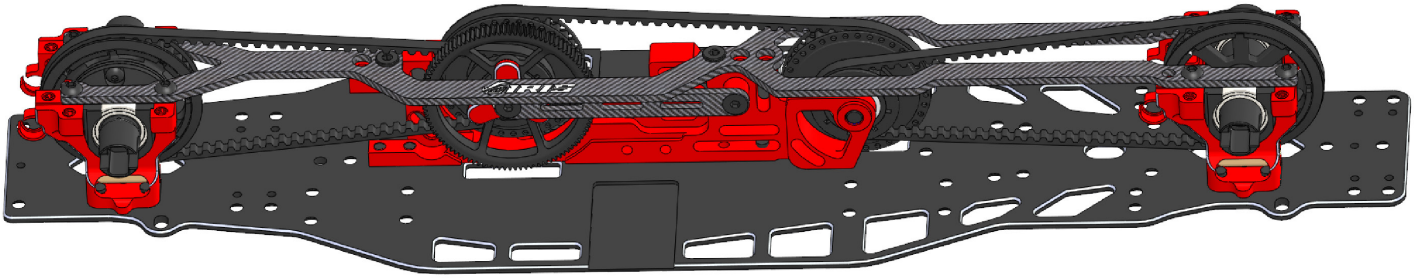
x8
M3x6mm
Button Head Screw

M3x6mm BH



3.2

TOPDECK MOUNTED

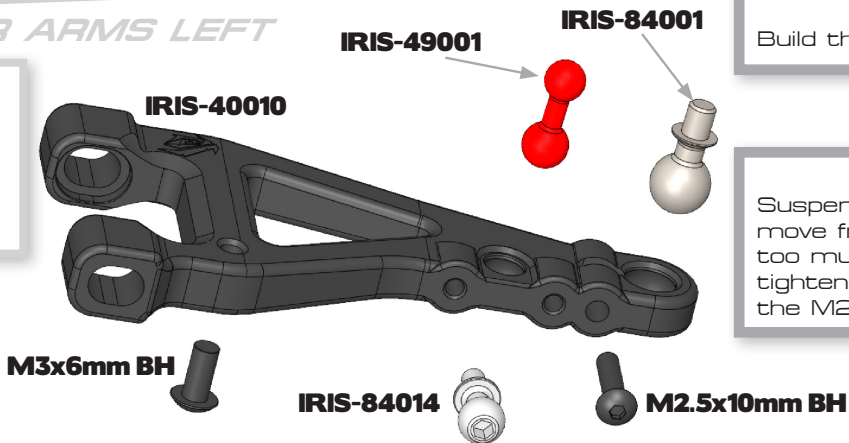


4.1


LOWER ARMS LEFT

x2
M2.5x10mm
Button Head Screw

x2
M3x6mm
Button Head Screw

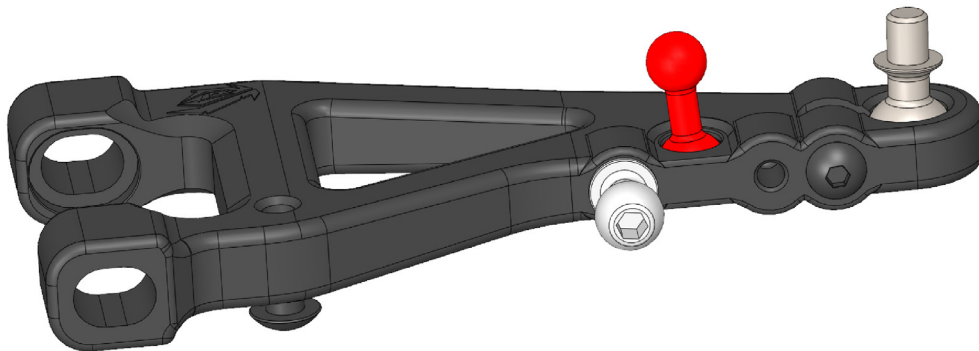



Build this step twice !


Suspension balls should move freely, yet have not too much play. Adjust by tightening or loosening the M2.5x10mm screw.

4.1

LOWER ARMS LEFT



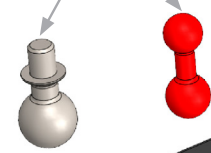


Build this step twice !



Suspension balls should move freely, yet have not too much play. Adjust by tightening or loosening the M2.5x10mm screw.

IRIS-49001
IRIS-84001



M2.5x10mm BH



IRIS-84014

M3x6mm BH

LOWER ARMS RIGHT

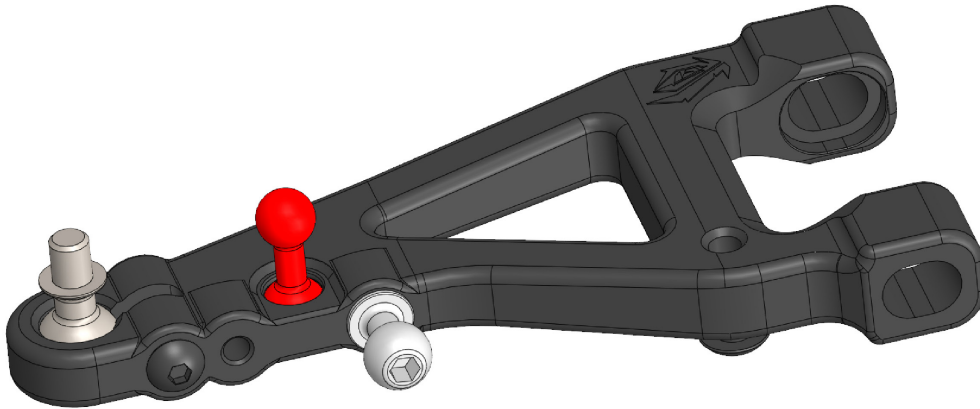
4.1

x2
M2.5x10mm
Button Head Screw

x2
M3x6mm
Button Head Screw

4.1

LOWER ARMS RIGHT



IRIS-41003

IRIS-84004

M2.5x14mm BH

M2.5x10mm BH

x1
M2.5x10mm
Button Head Screw

x1
M2.5x14mm
Button Head Screw

Use the included wrench to mount the adjustment nuts (wrench is on the battery mount injection mold).

IRIS-85001

2mm Plastic Washer

IRIS-21017

IRIS-40010

IRIS-84000

Suspension balls should move freely, yet have not too much play. Adjust by tightening or loosening the IRIS-41003 nuts.

FRONT LEFT UPPER ARM

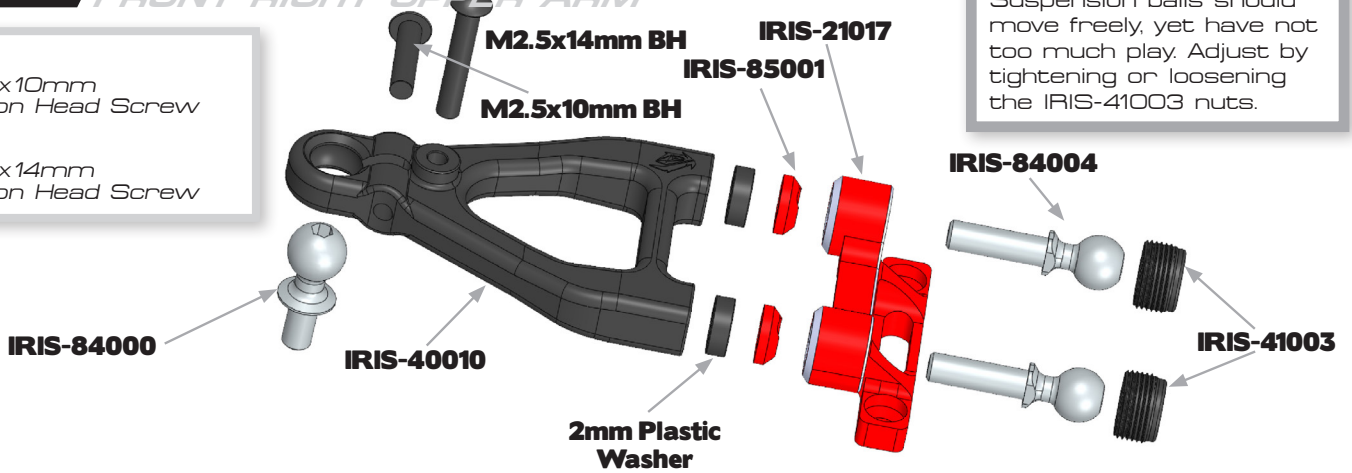
4.2

4.2

FRONT RIGHT UPPER ARM

x1
M2.5x10mm
Button Head Screw

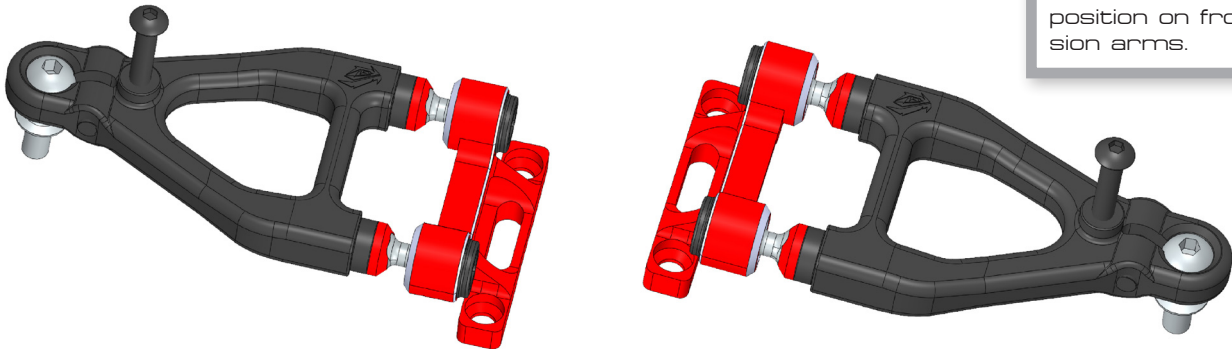
x1
M2.5x14mm
Button Head Screw



Suspension balls should move freely, yet have not too much play. Adjust by tightening or loosening the IRIS-41003 nuts.

4.2

FRONT UPPER ARMS ASSEMBLED



IRIS icon always in rear position on front suspension arms.

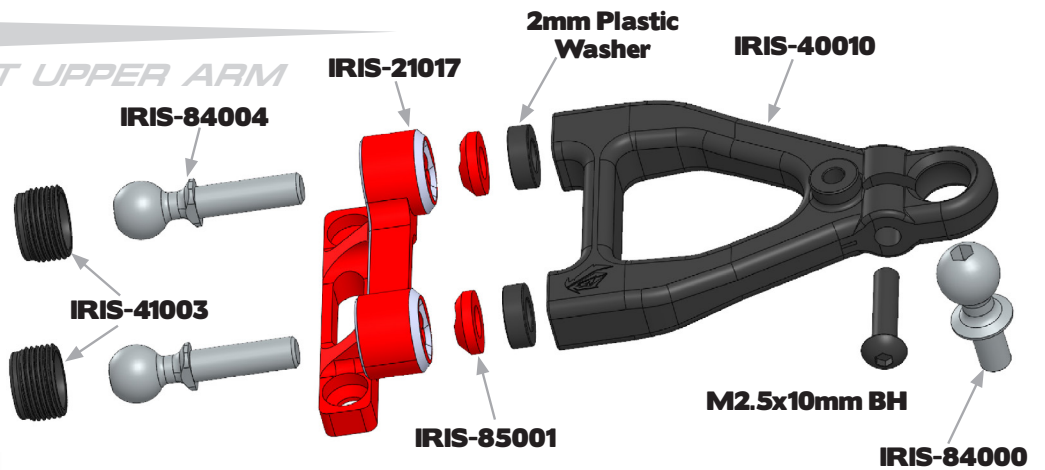
4.3

REAR LEFT UPPER ARM

x1
M2.5x10mm
Button Head Screw




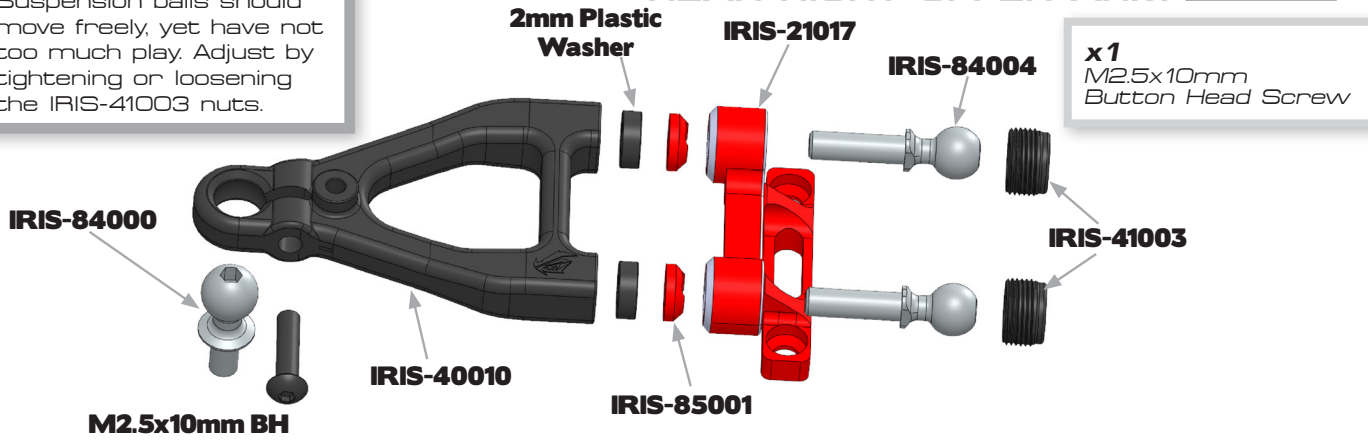
Suspension balls should move freely, yet have not too much play. Adjust by tightening or loosening the IRIS-41003 nuts.



4.3

REAR RIGHT UPPER ARM

 Suspension balls should move freely, yet have not too much play. Adjust by tightening or loosening the IRIS-41003 nuts.

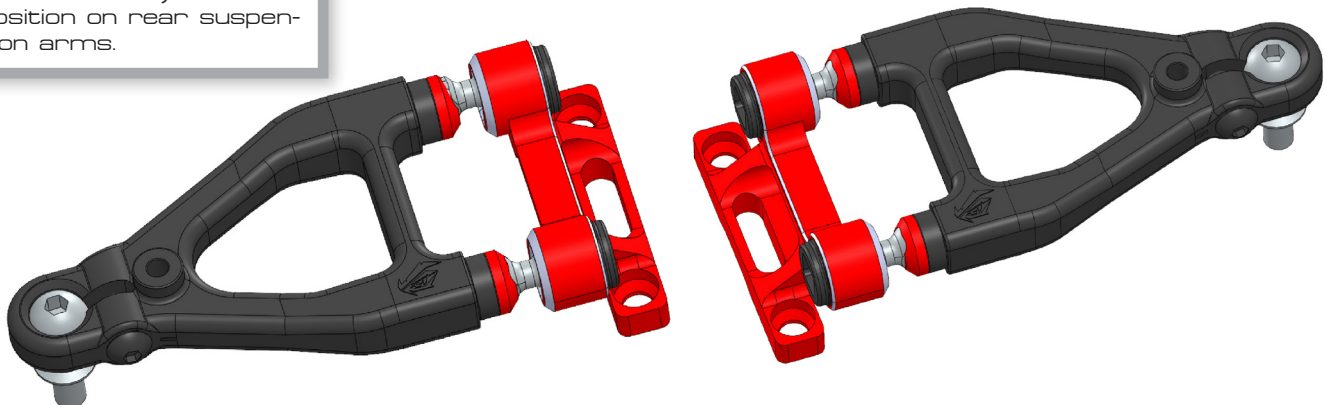


x1
M2.5x10mm
Button Head Screw

4.3

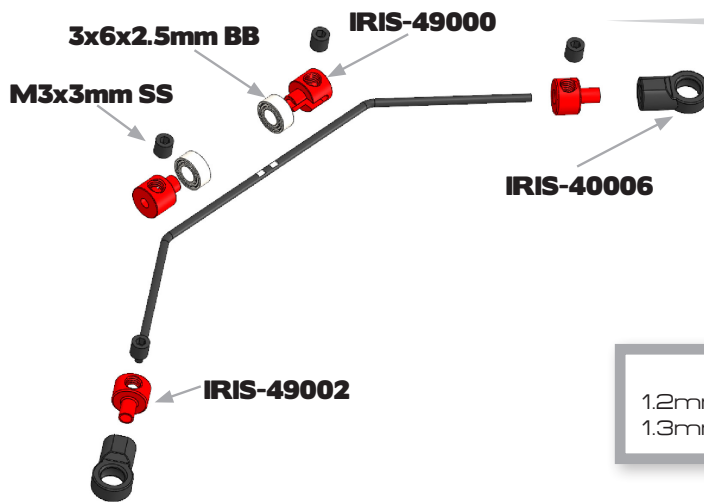
REAR UPPER ARMS ASSEMBLED

 IRIS icon always in front position on rear suspension arms.




4.4

ANTI-ROLL BAR



x8
M3x3mm
Set Screw

x4
3x6x2.5mm
Ball Bearing

 1.2mm front anti-roll bar
1.3mm rear anti-roll bar

 Build this step twice !

4.5

MOUNTING OF FRONT LOWER

x2
M3x3mm
Set Screw

Build Step 4.1

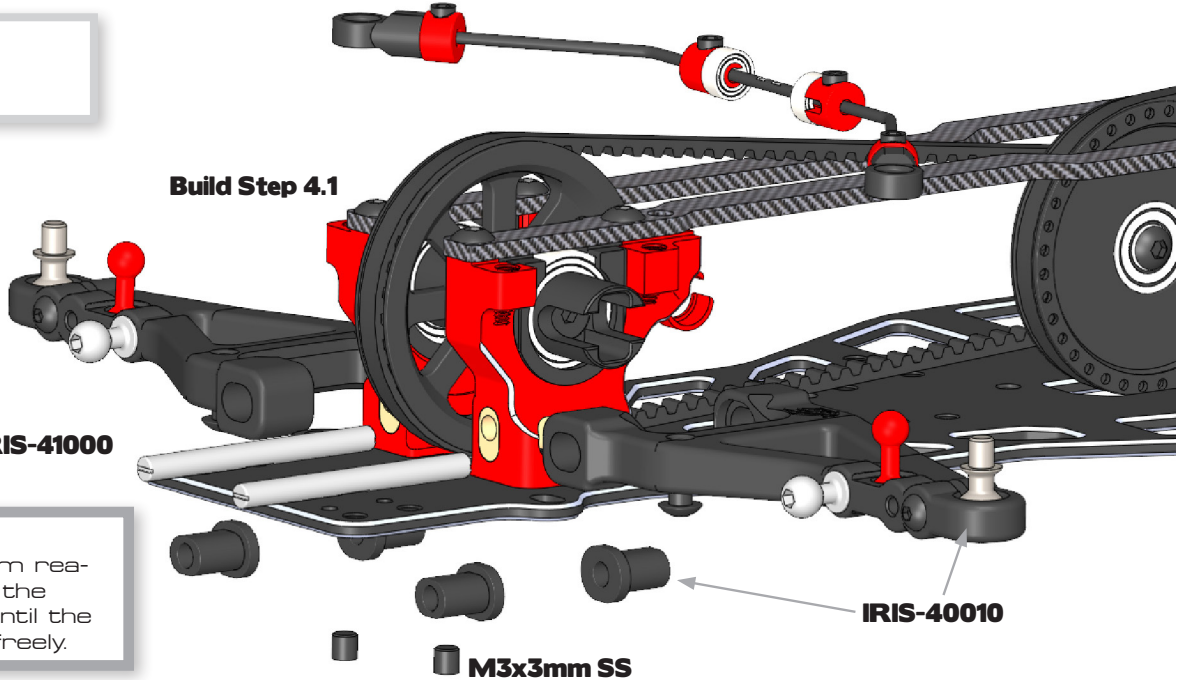
IRIS-41000



Use a 3.0mm arm reamer to increase the insert hole size until the hinge pin moves freely.

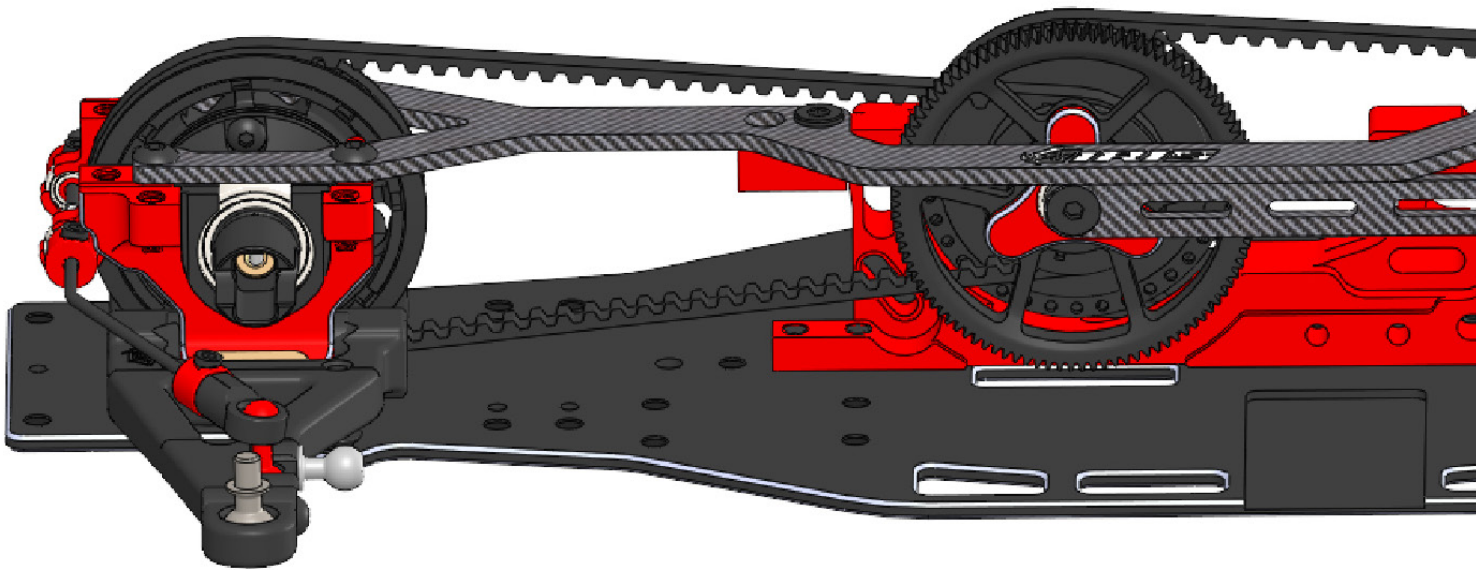
IRIS-40010

M3x3mm SS



4.5

LOWER ARMS MOUNTED



4.5

MOUNTING OF REAR LOWER ARMS

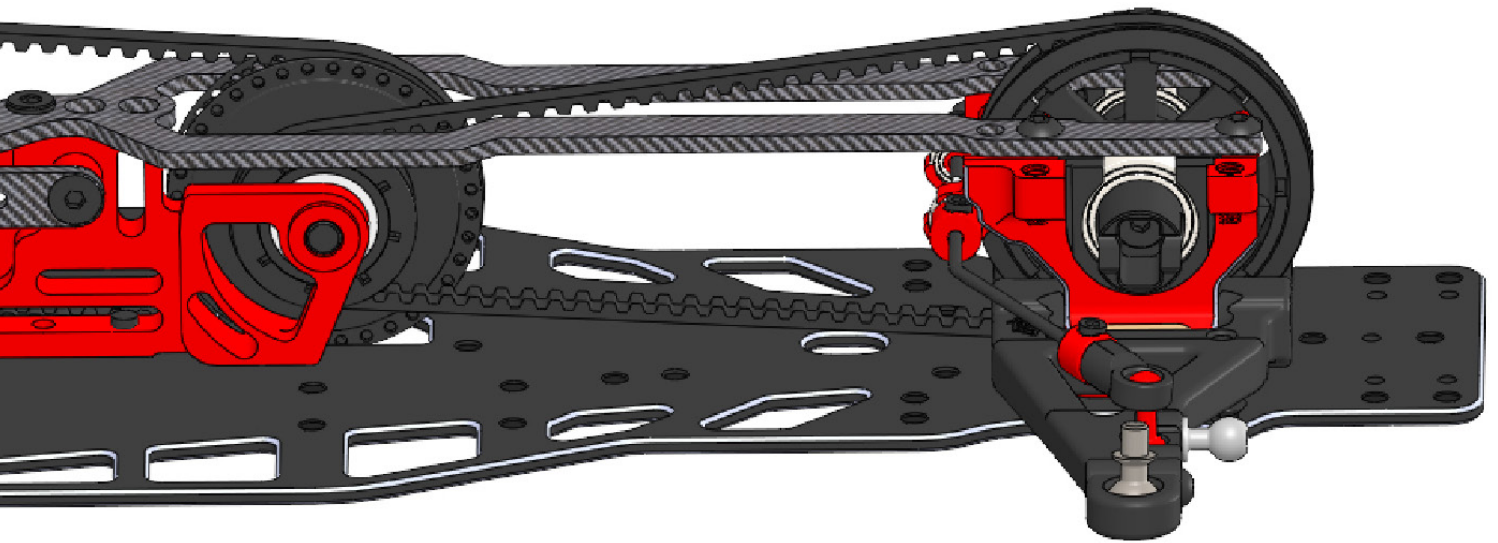
x2
M3x3mm
Set Screw

Build Step 4.1

IRIS-41000

M3x3mm SS

IRIS-40010



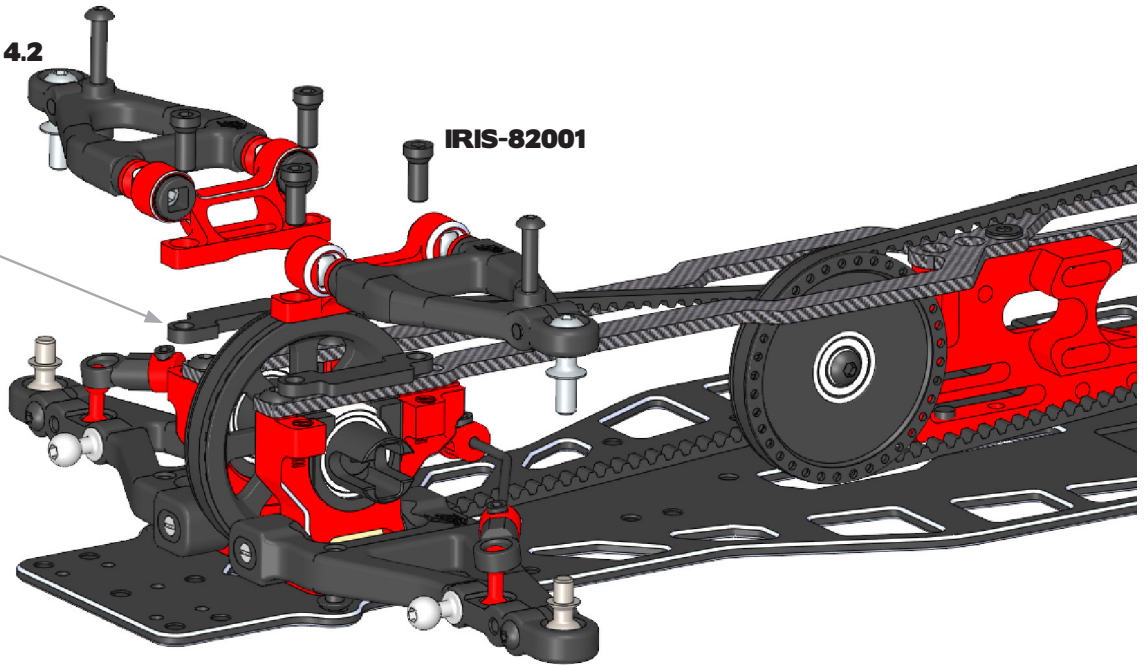
4.6

MOUNTING OF FRONT UPPER ARMS

Build Step 4.2

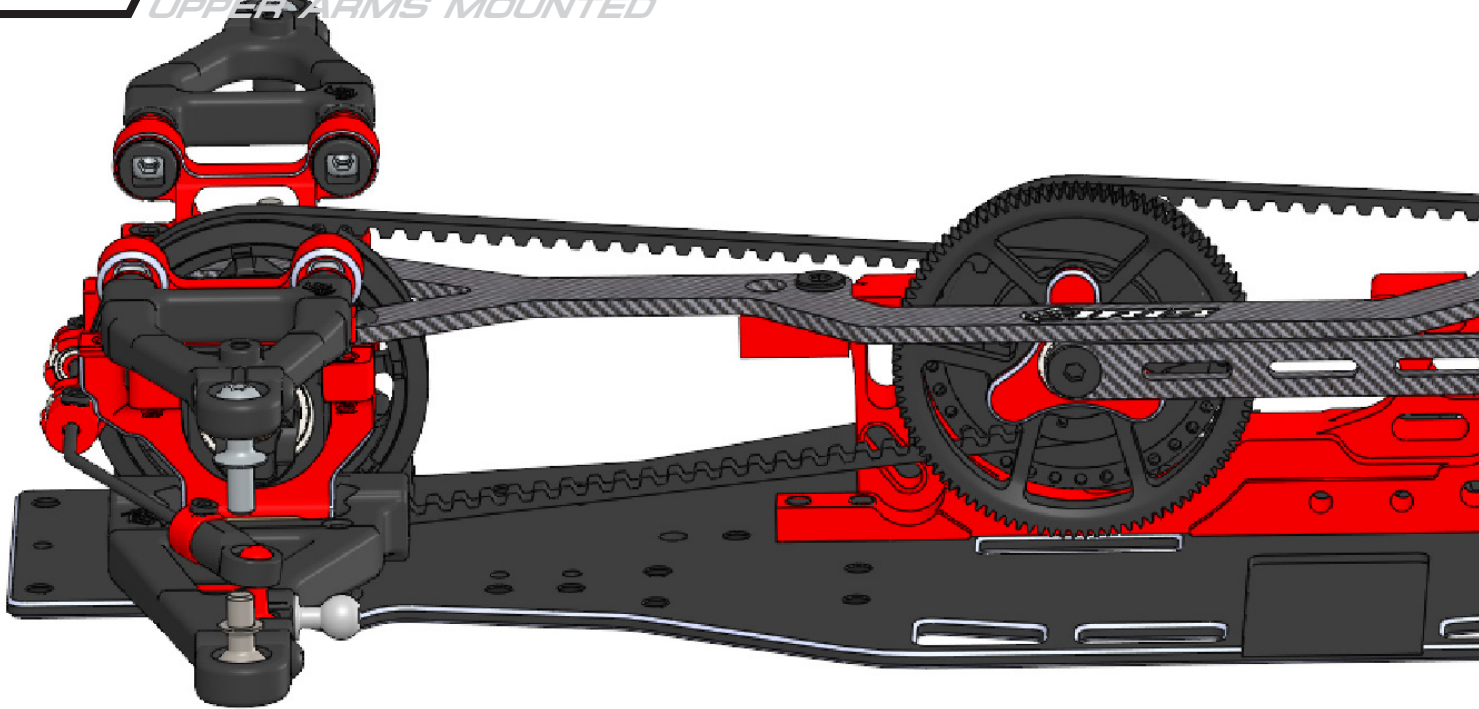
IRIS-23003
2mm

IRIS-82001



4.6

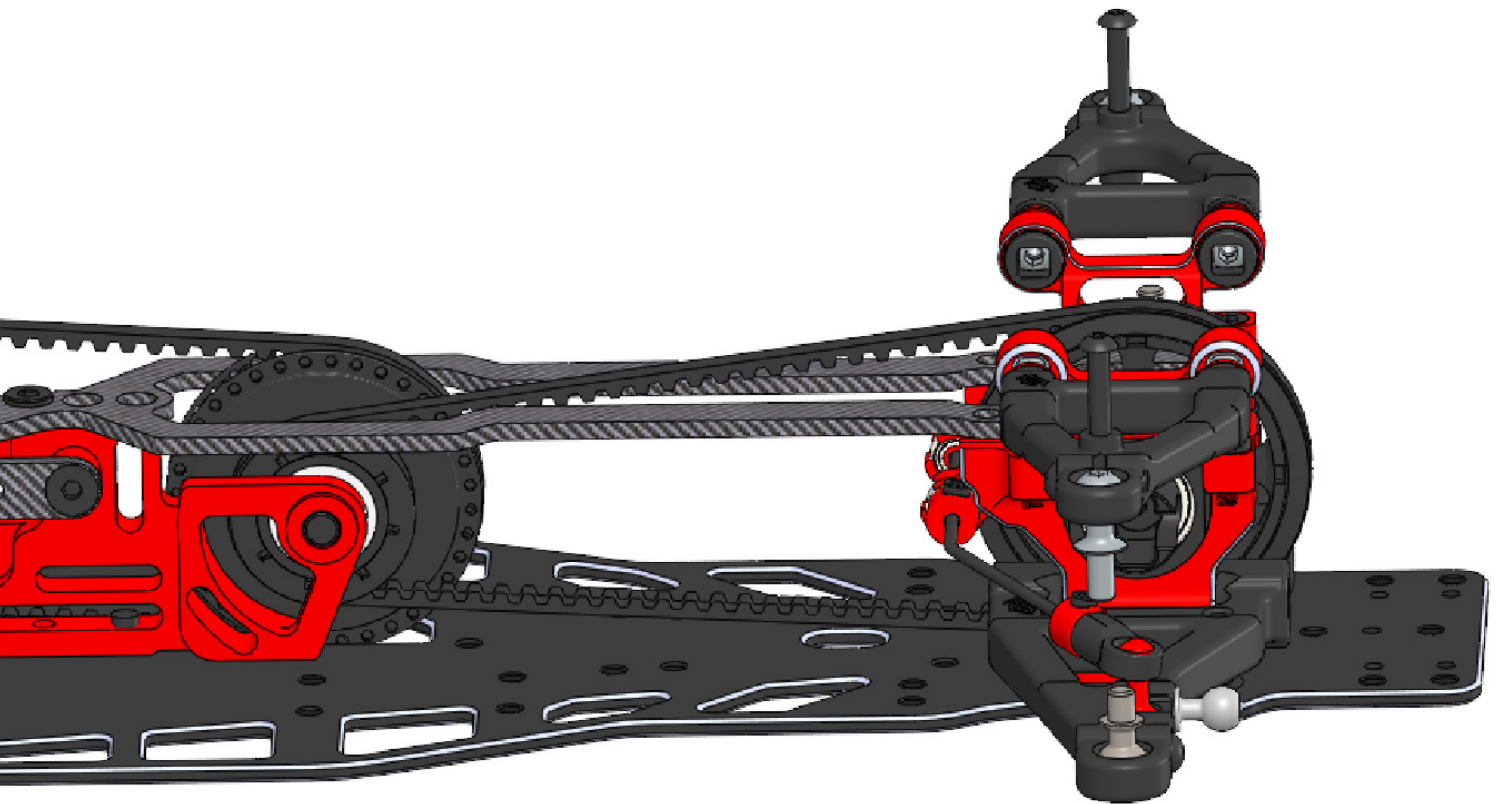
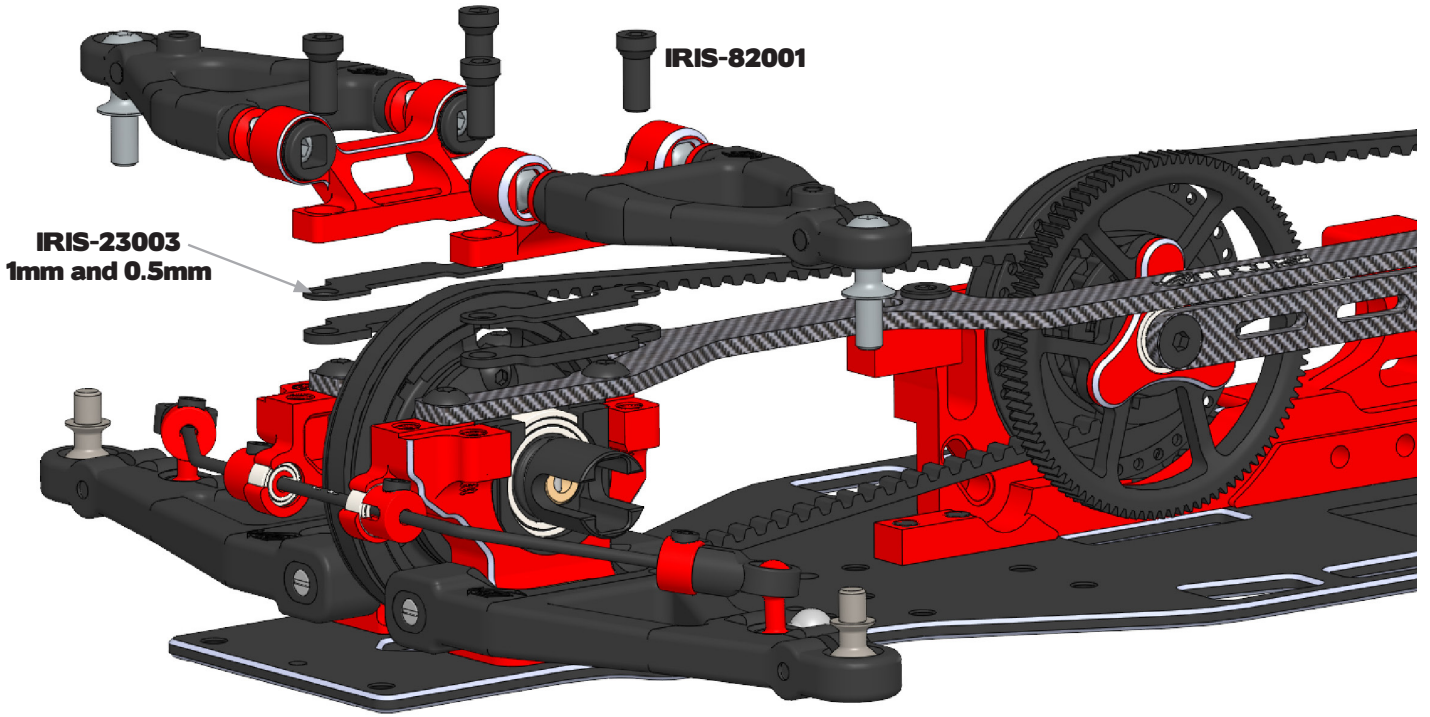
UPPER ARMS MOUNTED



4.6

Build Step 4.3

MOUNTING OF REAR UPPER ARMS



5.1

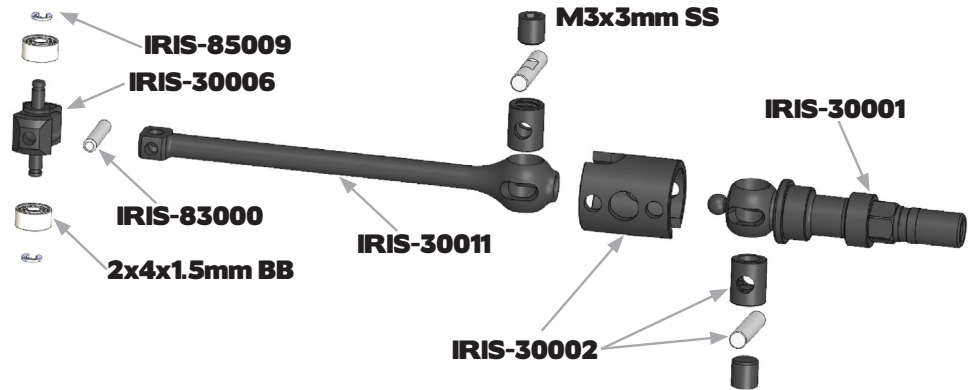
FRONT DRIVESHAFT

x2
M3x3mm
Set Screw

x2
2x4x1.5mm
Ball Bearing



Build this step twice !

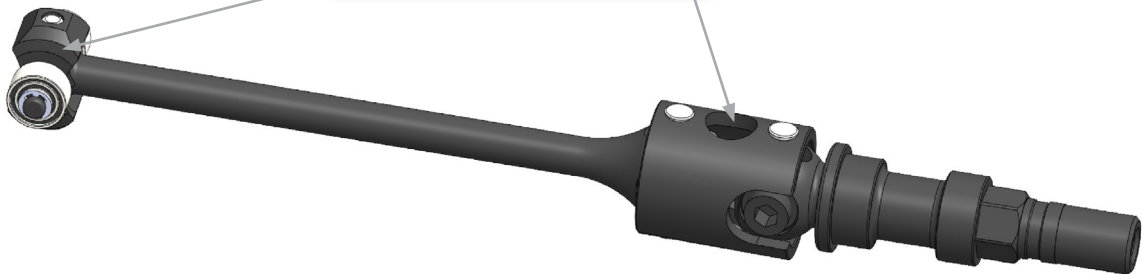


5.1

FRONT DRIVESHAFT



Lubricate using RP-0494
RUDDOG Drivetrain Oil



5.2

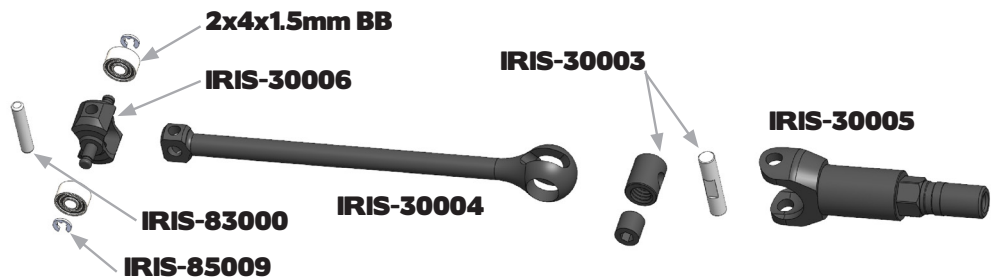
REAR DRIVESHAFT

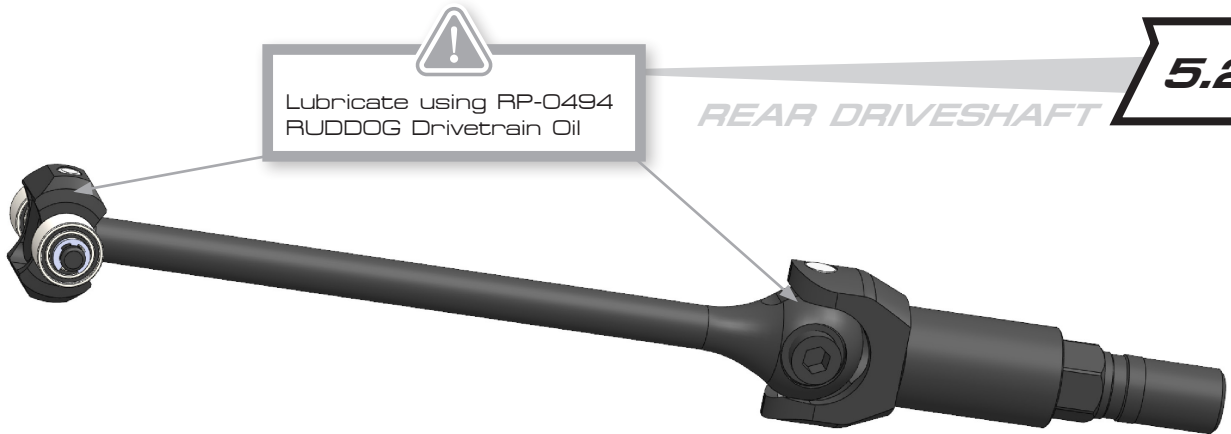
x1
M3x3mm
Set Screw

x2
2x4x1.5mm
Ball Bearing



Build this step twice !

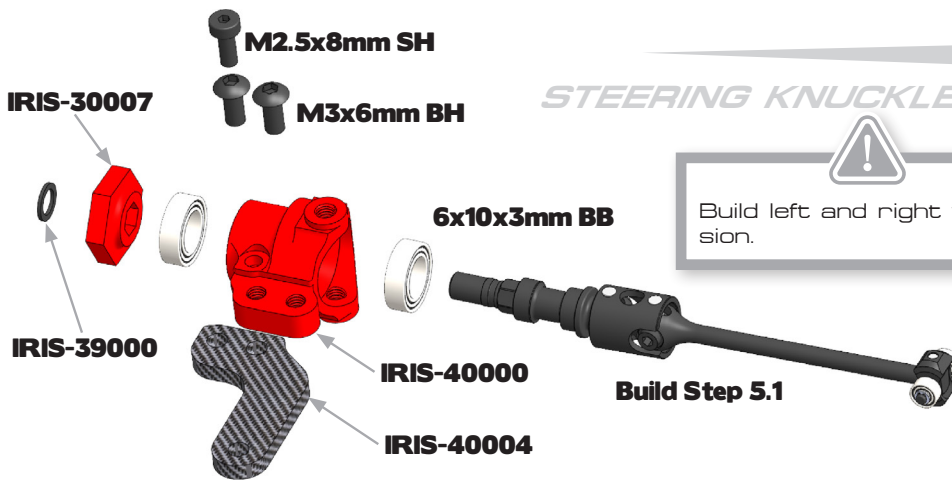




Lubricate using RP-0494
RUDDOG Drivetrain Oil

REAR DRIVESHAFT

5.2



STEERING KNUCKLE FRONT L+R

6.1

Build left and right version.

- x4
M3x6mm
Button Head Screw
- x2
M2.5x8mm
Socket Head Screw
- x4
6x10x3mm
Ball Bearing



STEERING KNUCKLE FRONT L+R

6.1

6.2

STEERING KNUCKLE REAR L+R

x4
M3x6mm
Button Head Screw

x2
M2.5x8mm
Socket Head Screw

x4
6x10x3mm
Ball Bearing

IRIS-39000

M3x6mm BH

IRIS-40011

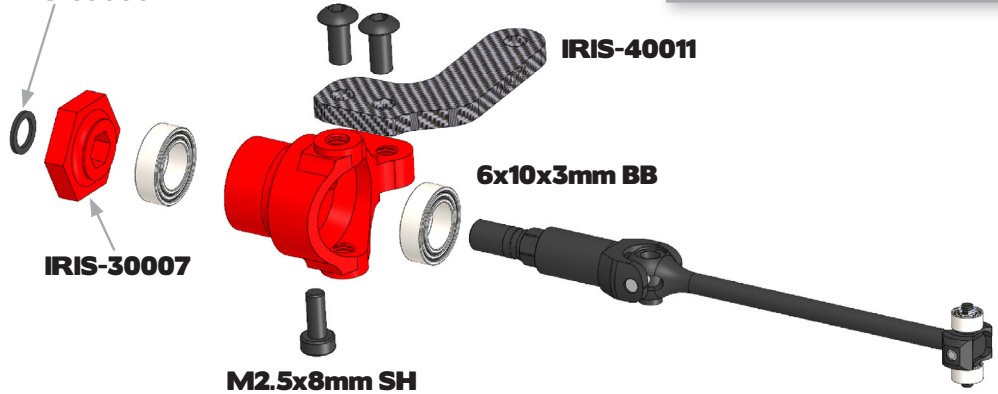
IRIS-30007

6x10x3mm BB

M2.5x8mm SH

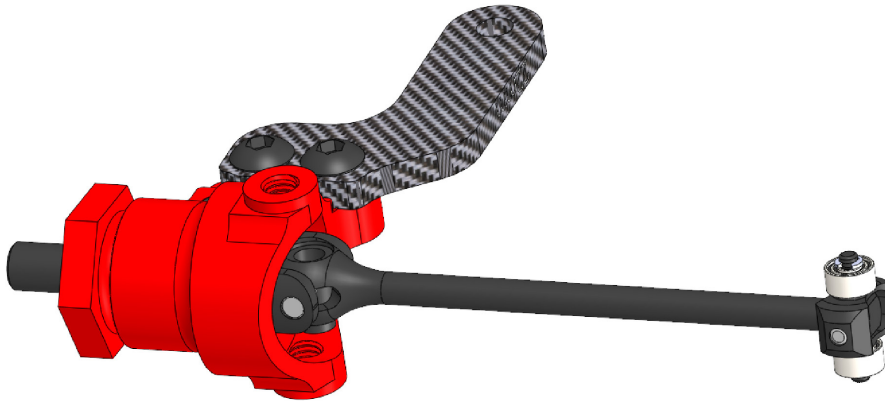


Build left and right version.
Left shown in picture.



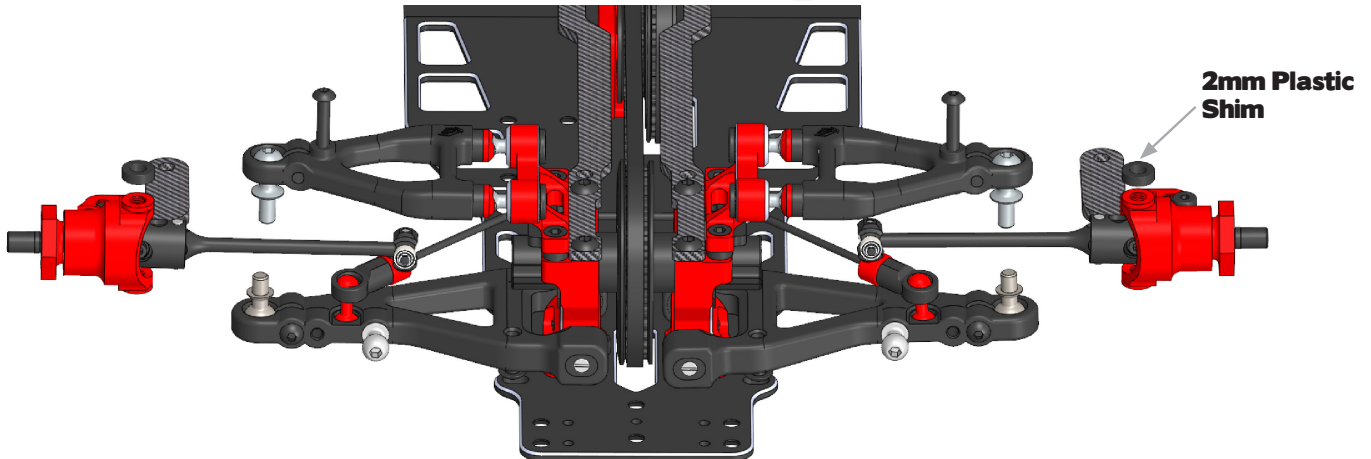
6.2

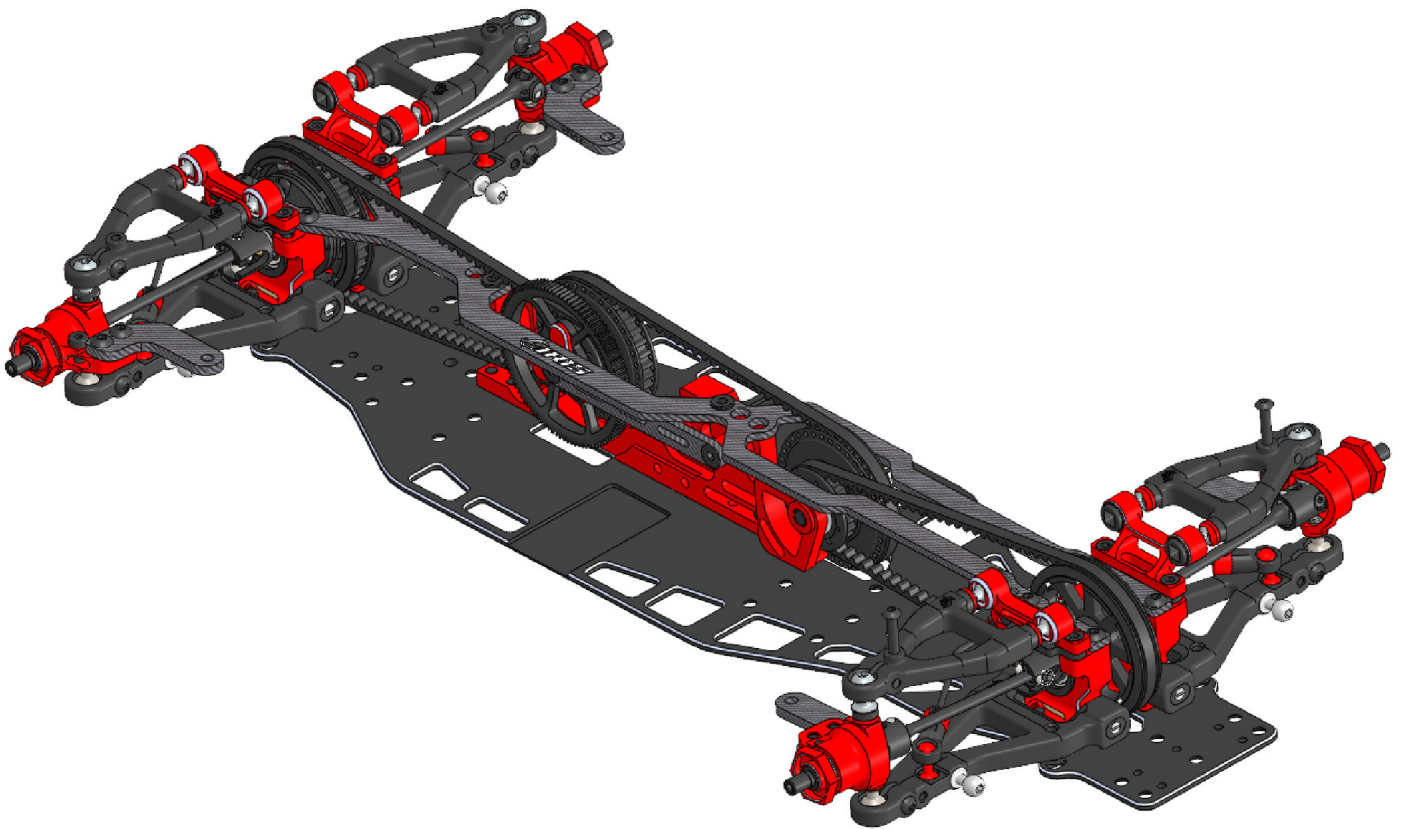
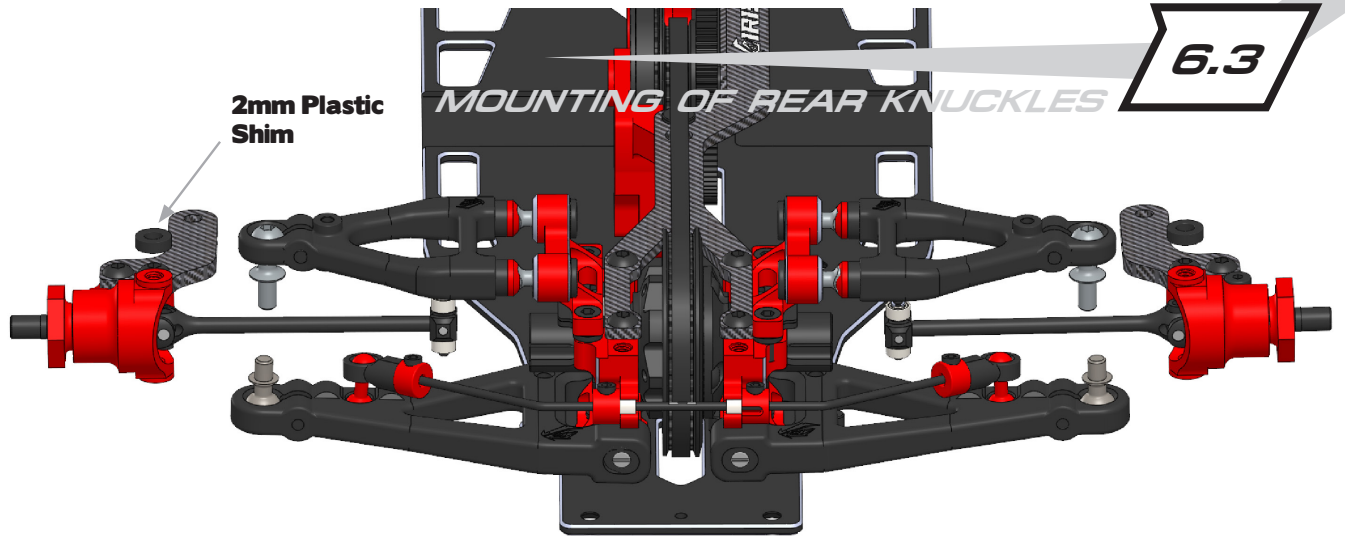
STEERING KNUCKLE REAR L+R



6.3

MOUNTING OF STEERING KNUCKLES





7.1

SHOCKS FRONT

x10
M2x6mm
Counter Sunk Screw

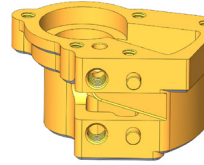


500 cst for front shocks
800 cst for rear shocks

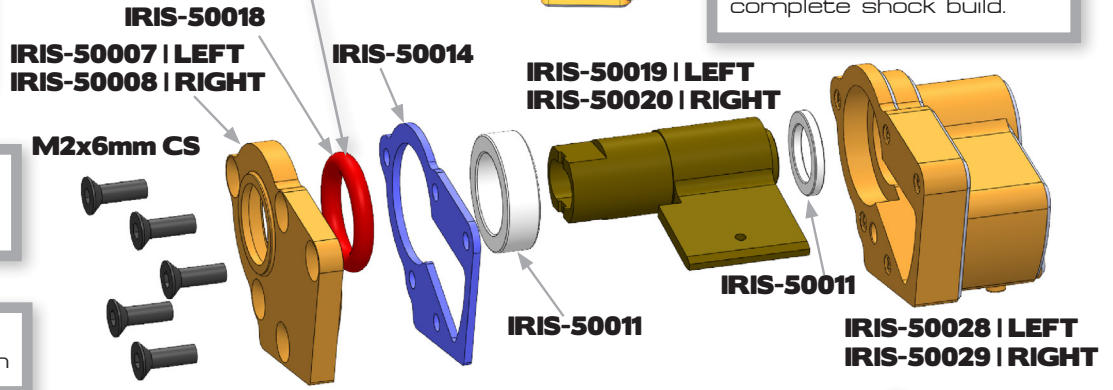


Build left and right version

Lubricate using
RUDDOG Red Stuff
Grease or similar.



Insert guide shim and fill
with silicone oil. After-
wards insert piston and
complete shock build.



7.2

SHOCKS REAR

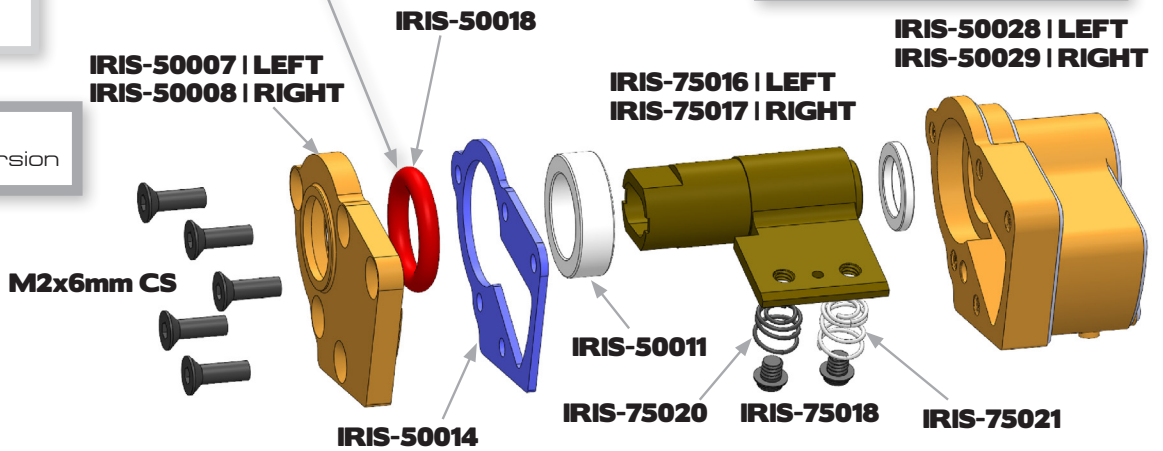
x10
M2x6mm
Counter Sunk Screw



Build left and right version

Lubricate using
RUDDOG Red Stuff
Grease or similar.

Insert guide shim and fill
with silicone oil. After-
wards insert piston and
complete shock build.



7.3

FRONT ROCKERS

x4
M2x4mm
Counter Sunk Screw

x2
M2x5mm
Socket Head Screw

RIGHT Version

LEFT Version

IRIS-50035

IRIS-50034

M2x4mm CS

M2x5mm SH

IRIS-50031

Build left and right ver-
sion.

IRIS-50030

M2x4mm CS

M2x5mm SH



Build left and right version.

7.4

REAR ROCKERS

RIGHT Version

LEFT Version

x4
M2x4mm
Counter Sunk Screw

x2
M2x5mm
Socket Head Screw

IRIS-50033

IRIS-50034

IRIS-50031

M2x4mm CS

M2x4mm CS

M2x5mm SH

IRIS-50030

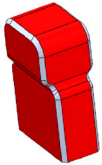
M2x5mm SH

7.5

SPRING MOUNTS FRONT



Build this step twice !



IRIS-41001

IRIS-51000

Front: C=12.9
Rear: C=26.7

IRIS-50015



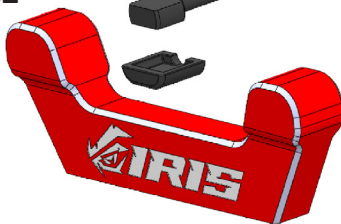
Use some grease to make the plastic inserts stick onto the spring.

7.6

SPRING MOUNT REAR

IRIS-51003

IRIS-41002



IRIS-50015



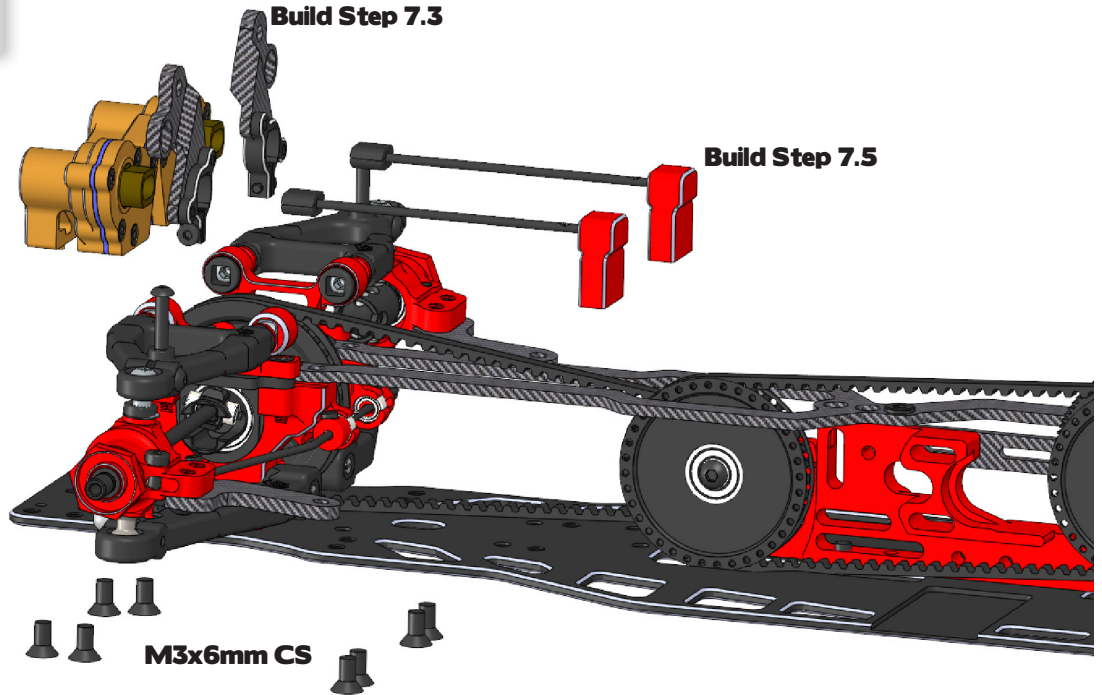
Use some grease to make the plastic inserts stick onto the spring.

7.6

MOUNTING OF FRONT SHOCKS

x8
M3x6mm
Counter Sunk Screw

Build Step 7.1



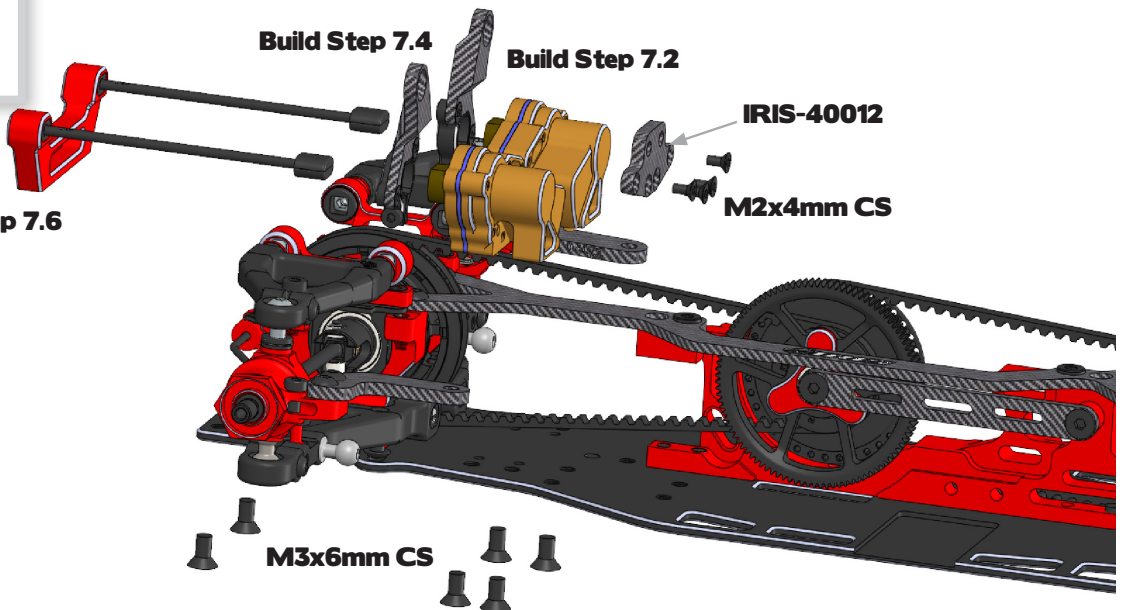
7.6

MOUNTING OF REAR SHOCKS

x8
M3x6mm
Counter Sunk Screw

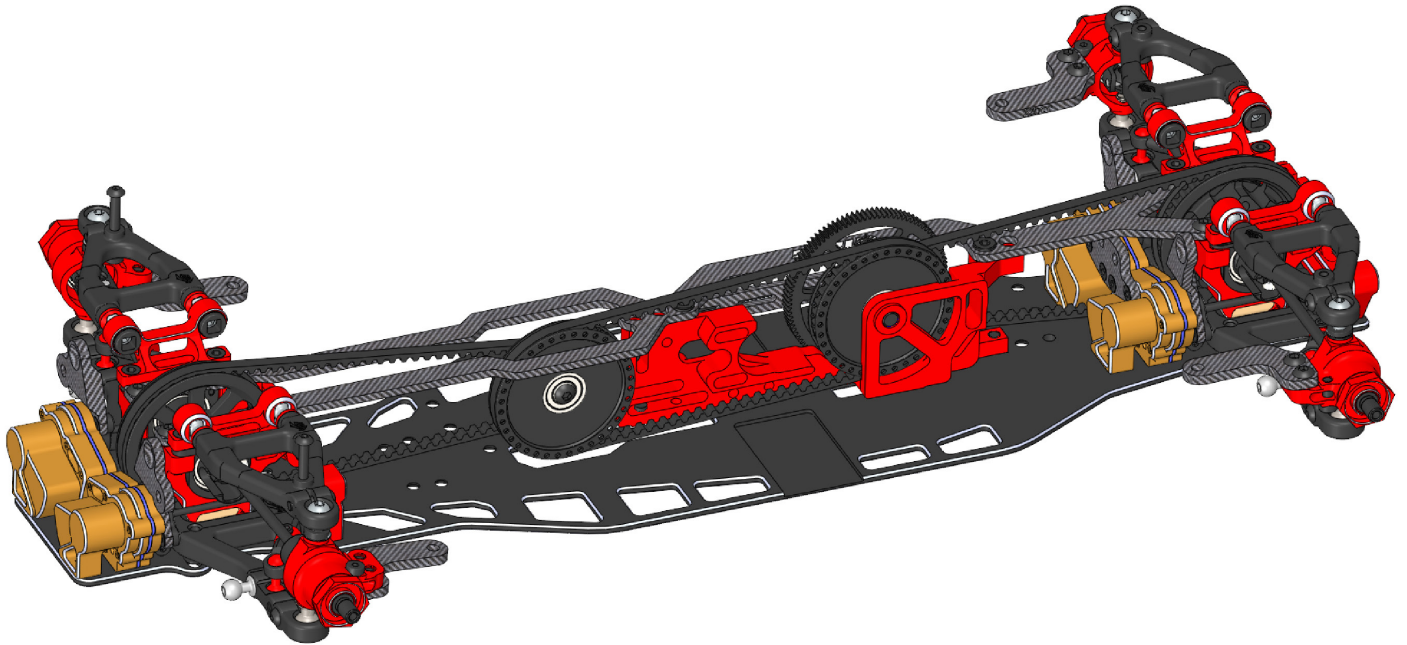
x4
M2x4mm
Counter Sunk Screw

Build Step 7.6



7.6

SHOCKS MOUNTED



8.1

STEERING SYSTEM

IRIS-84002

M3x6mm BH

M2x6mm SH

IRIS-21008

IRIS-84002

M3x6mm BH

4x8x3mm BB

IRIS-21007

M2x4mm SH

M3x6mm BH



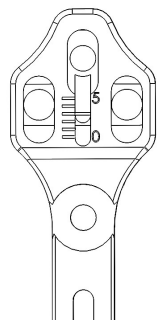
Servo is not included. We recommend the RUDDOG Racing RR1406 servo.

x6
M3x6mm
Button Head Screw

x1
M2x6mm
Socket Head Screw

x2
M2x4mm
Socket Head Screw

Standard Setting

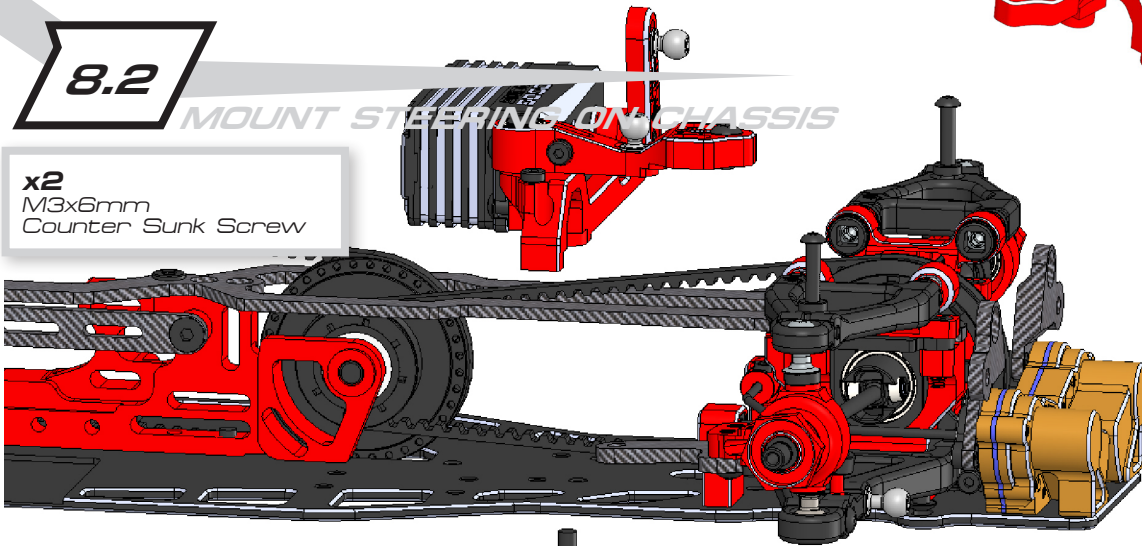


Servo Horn is not included. We recommend:
IRIS-73000 | 25T Spline
IRIS-73001 | 23T Spline

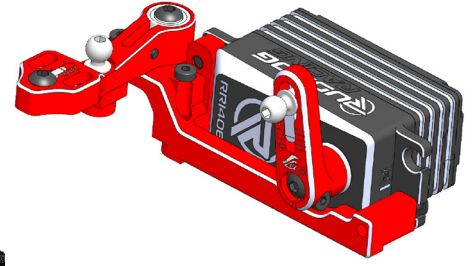
8.2

MOUNT STEERING ON CHASSIS

x2
M3x6mm
Counter Sunk Screw



M3x6mm CS

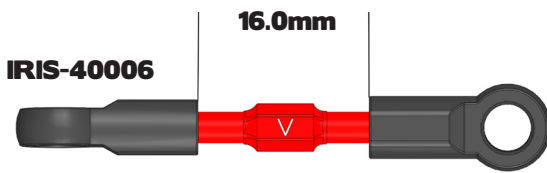


9.1

SHOCK AND SERVO LINKS



Build the shock link 4 times!



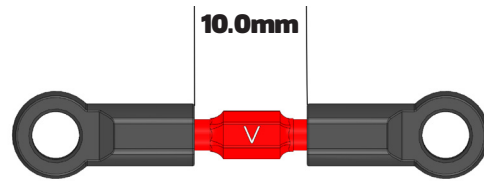
IRIS-40006

16.0mm

IRIS-40002

Short Ball Cup

Servo Link



10.0mm

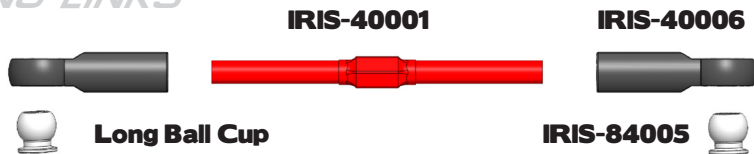
4x Shock Link

9.2

FRONT STEERING LINKS



Build this step twice!



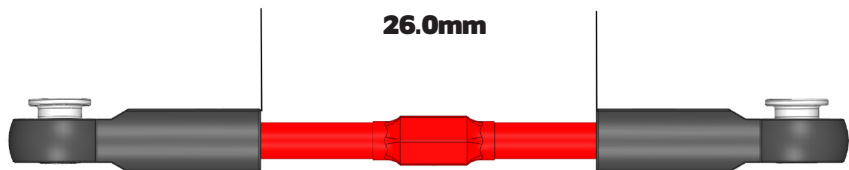
IRIS-40001

IRIS-40006



Long Ball Cup

IRIS-84005



26.0mm

9.3

REAR SUSPENSION LINKS

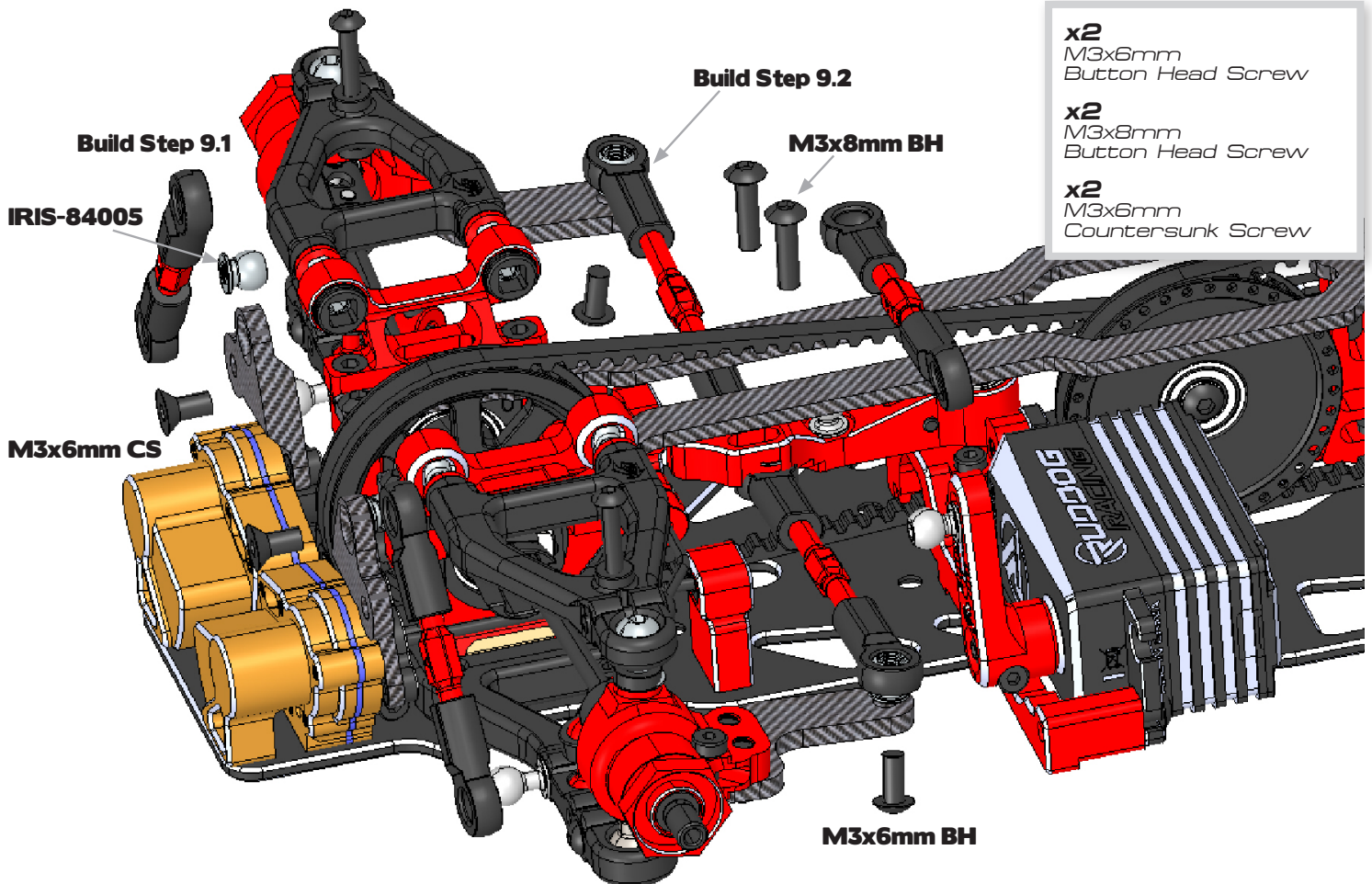


Build this step twice!



9.4

MOUNTING OF FRONT LINKS



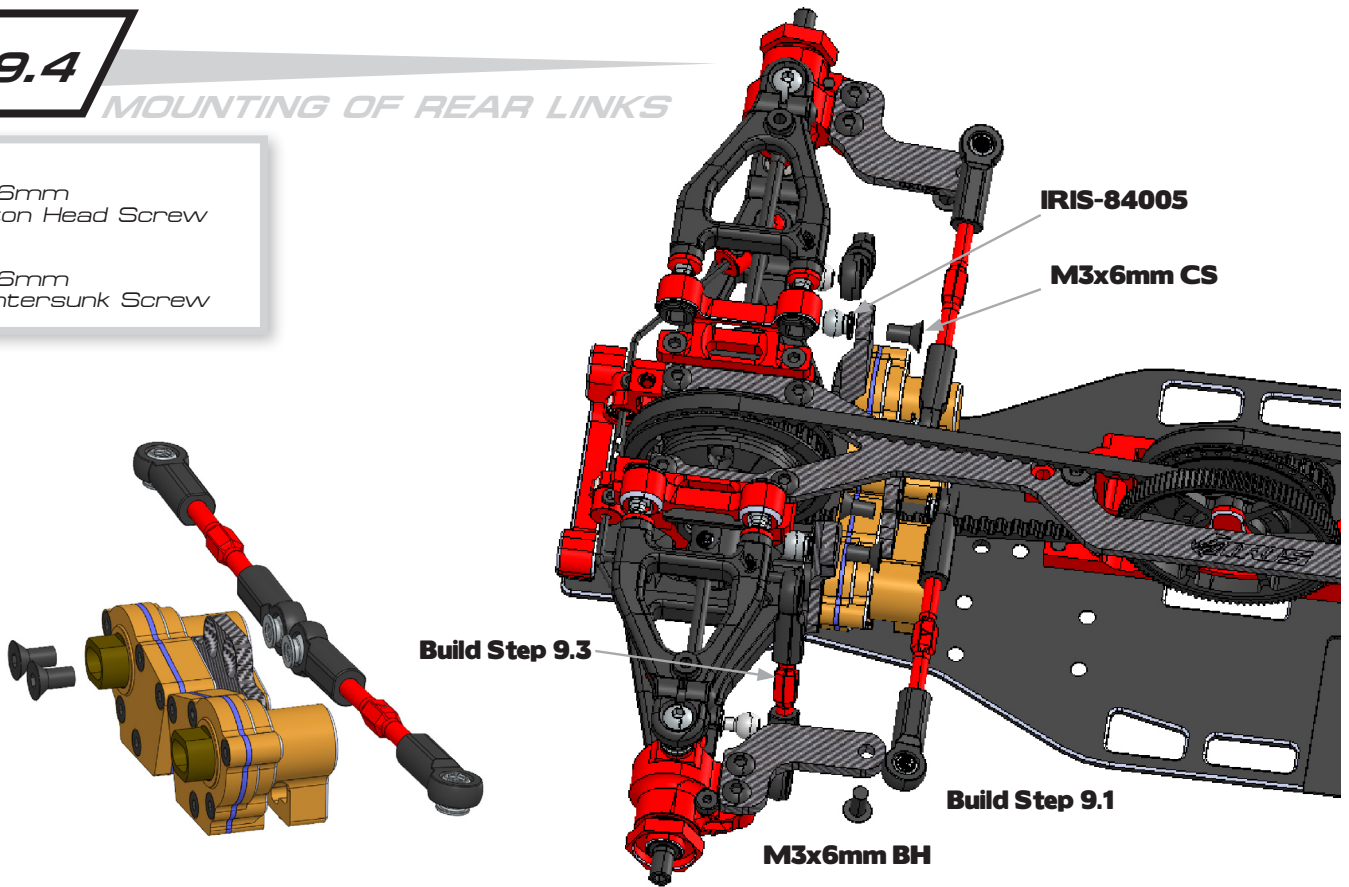
- x2
M3x6mm
Button Head Screw
- x2
M3x8mm
Button Head Screw
- x2
M3x6mm
Countersunk Screw

9.4

MOUNTING OF REAR LINKS

x2
M3x6mm
Button Head Screw

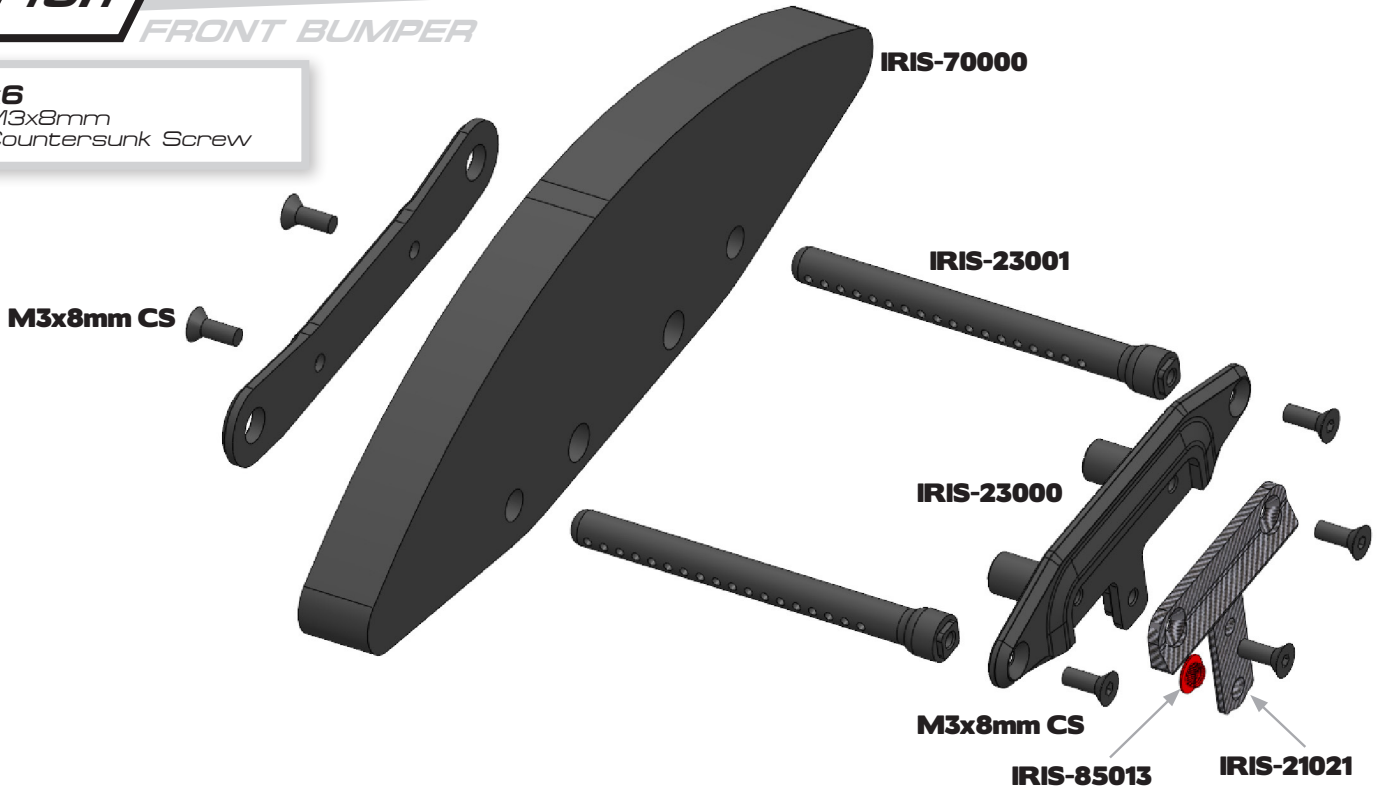
x4
M3x6mm
Countersunk Screw



10.1

FRONT BUMPER

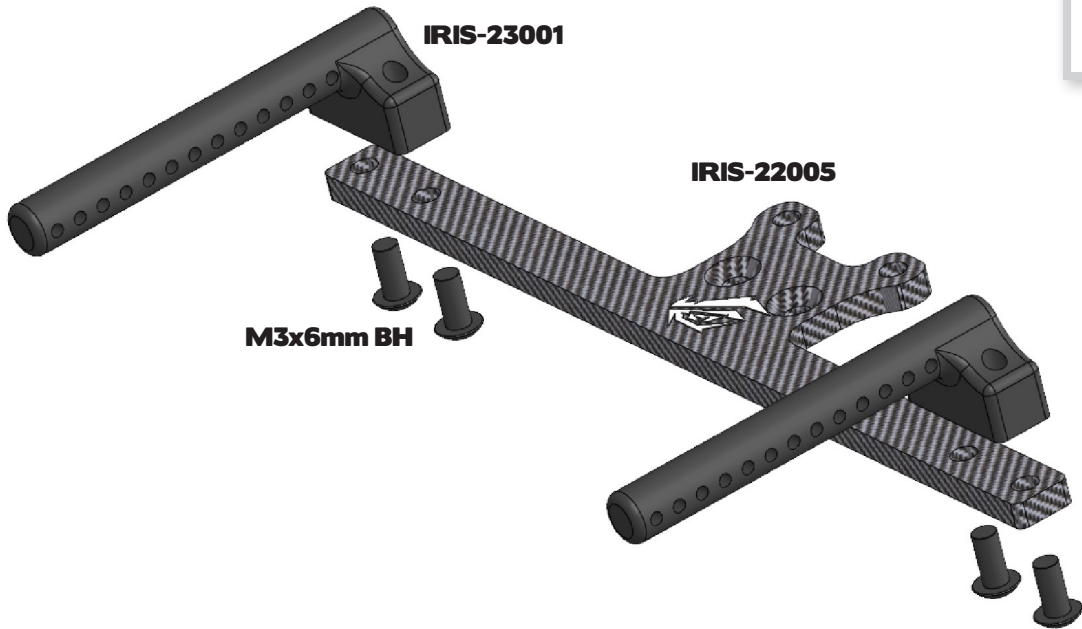
x6
M3x8mm
Countersunk Screw



10.2

REAR BODY MOUNT

x4
M3x6mm
Button Head Screw



M3x6mm BH

IRIS-23001

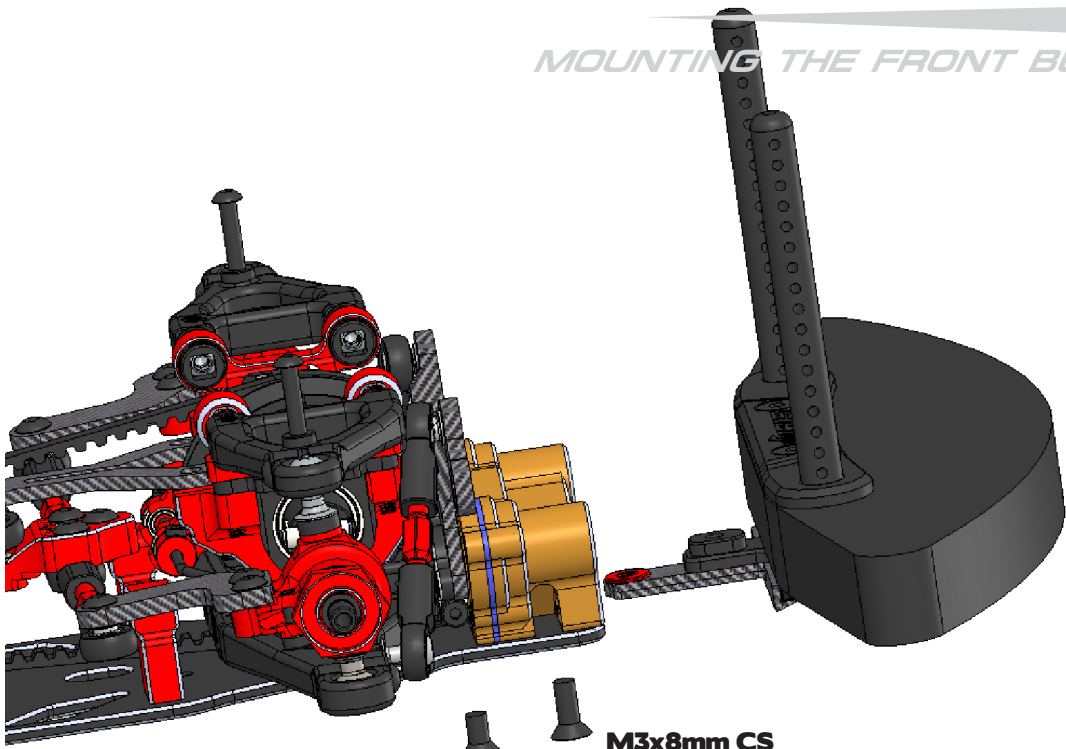
IRIS-22005

10.3

MOUNTING THE FRONT BUMPER

x1
M3x6mm
Countersunk Screw

x1
M3x8mm
Countersunk Screw



Build Step 10.1

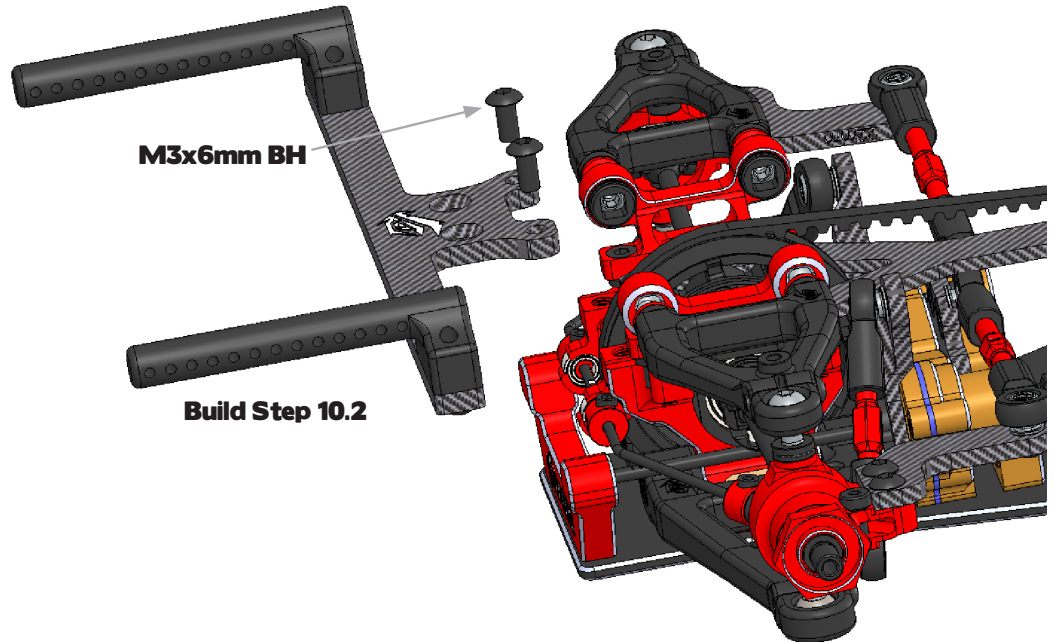
M3x6mm CS

M3x8mm CS

10.3

MOUNTING THE REAR BODY MOUNT

x2
M3x6mm
Button Head Screw



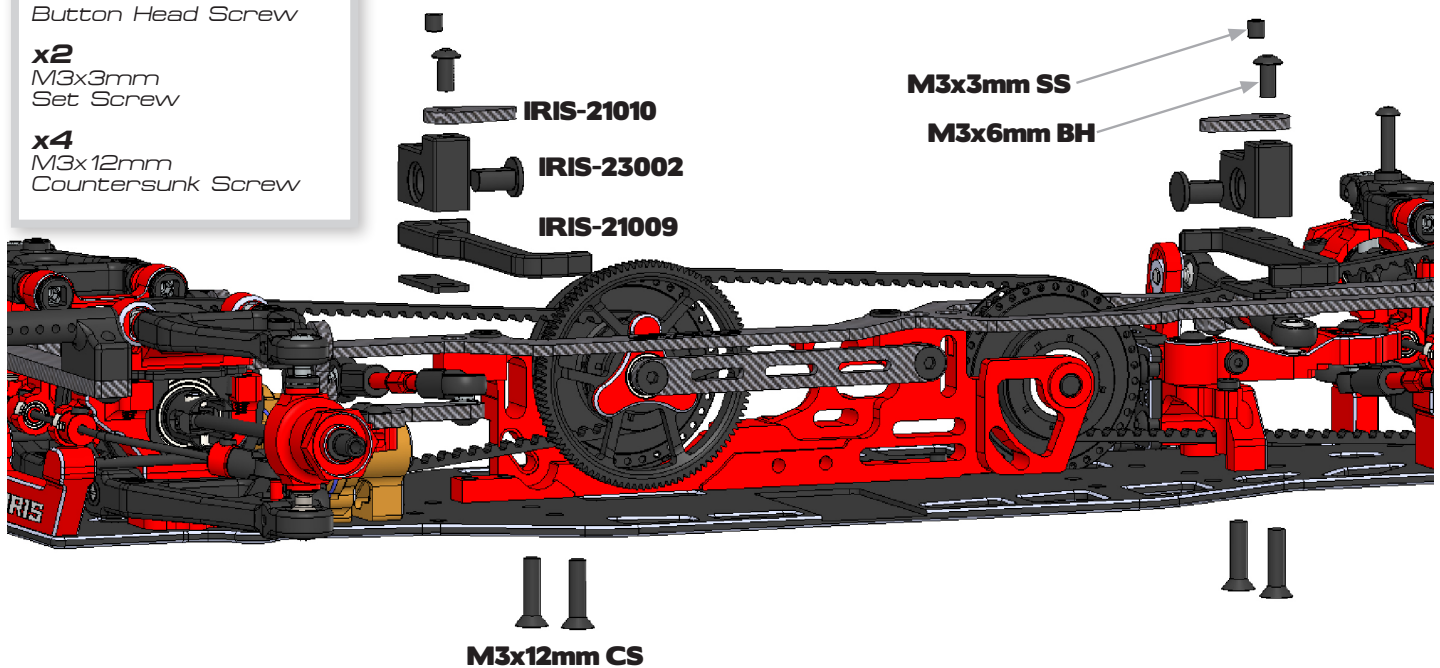
10.3

INSTALL BATTERY MOUNT

x2
M3x6mm
Button Head Screw

x2
M3x3mm
Set Screw

x4
M3x12mm
Countersunk Screw



GEAR UP, SPEED UP:

CHOOSE RUDDOG FOR YOUR IRIS ONE.1.



1/10 TOURING TIRE HEATING SYSTEM



RUDDOG HD LIPO CHARGING BAG



RSS65 SOLDERING STATION 65W



CAR BAG - 1/10 TOURING CAR



ONROAD ALUMINIUM CAR STAND



SMALL RACING BAG



www.iris-racing.com



RUDDOG
Distribution GmbH
Sägewerkstr. 16
83416 Saaldorf-Surheim
GERMANY

Email: support@ruddog.eu
Tel: +49 8654 5894818

