



IRIS

ONE **.05**
FWD
IRIS ONE.**.05** FWD COMPETITION TOURING CAR KIT

#RACEIRIS

Thank you for choosing the IRIS ONE.05 FWD,

the latest embodiment of Ruddog's commitment to excellence in on-road racing.

With the original launch of IRIS ONE, we embarked on a groundbreaking journey, reshaping the high-end on-road racing cars. Now, after an exhilarating 10-month run and close collaboration with our devoted customers and team drivers, we are thrilled to present the IRIS ONE.05, a evolution in our series.

The IRIS ONE.05 builds upon the legacy of its predecessor, refining and introducing improvements that make a real difference on track. These include:

- *Chassis Pin Locators in Bulkheads, Motor Mount, and Damper Cases for precise alignment*
- *Lightweight Lower and Upper Bulkheads, Motor Mount, Damper Cases for better agility*
- *A total weight saving of over 25grams*
- *Improved Chassis Flex for optimal performance*
- *Improved Drivetrain durability for consistent reliability*
- *Refined Pushrod geometry for improved handling and increased corner speed*
- *New differential and shock sealing for precision control*

This innovative leap is more than just a set of improvements; it's our renewed promise to stay ahead, to challenge the norm, and to contribute to the racing scene with unique solutions. Our vision, guided by designer Andreas Myrberg, continues to lead us down untrodden paths, pursuing excellence with each new creation.

With the IRIS ONE.05, you're not just acquiring a state-of-the-art racing machine; you're joining our relentless pursuit of perfection. This is our commitment to you - to provide unparalleled support, to create meaningful content, to devise practical tuning options, and to bring absolute value to your racing experience.

We aim high, embracing the risks that come with innovation, all to offer you the best possible product. Your trust in us fuels our passion, and we genuinely thank you for being part of this next exciting chapter with IRIS. Thank you very much.

We hope you'll enjoy the IRIS ONE.05, a testament to our never-ending quest for something great over time.

PDF Manual:



Setup Sheets:



Videos:



GEAR UP WITH RUDDOG:

THE ESSENTIAL TOOLS FOR YOUR IRIS ONE.05.



RACE AHEAD WITH RUDDOG:

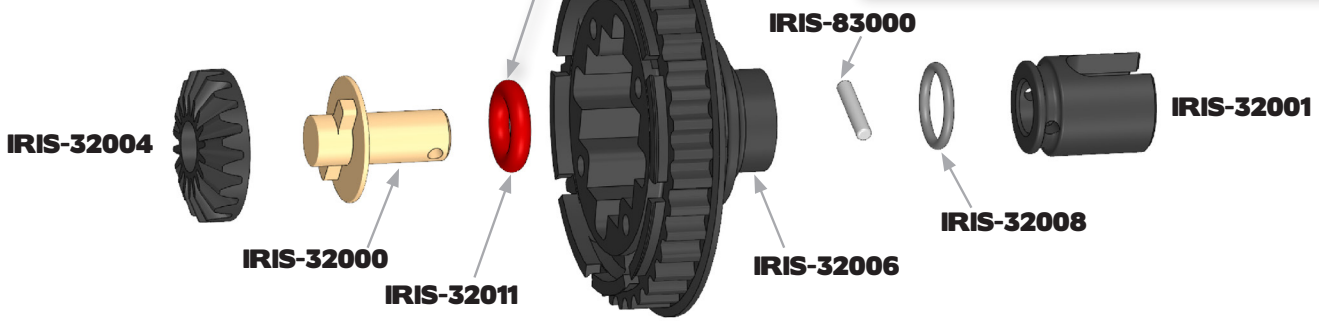
ESSENTIAL RACING EQUIPMENT FOR YOUR IRIS ONE.05.



1.1

DIFFERENTIAL

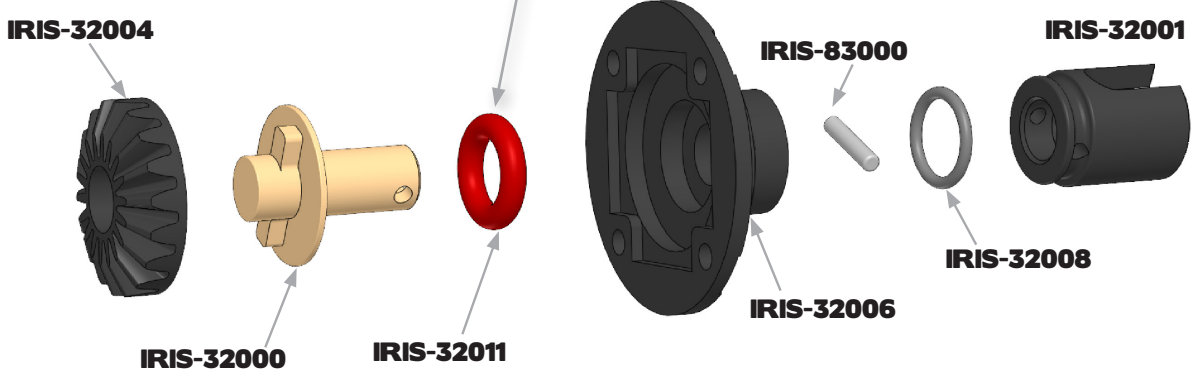
Lubricate using
RUDDOG Red Stuff
Grease or similiar.



1.2

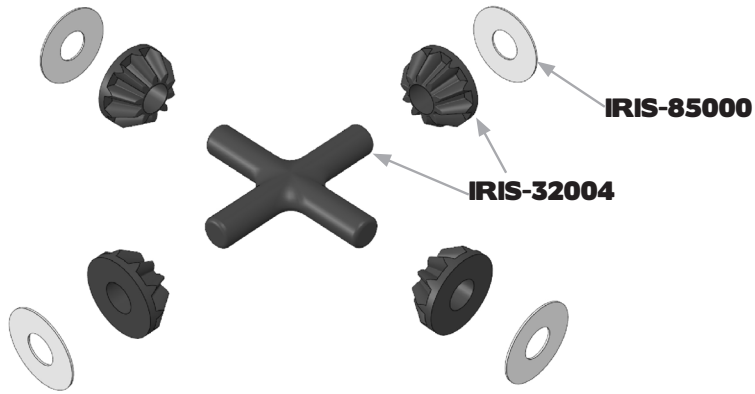
DIFFERENTIAL

Lubricate using
RUDDOG Red Stuff
Grease or similiar.

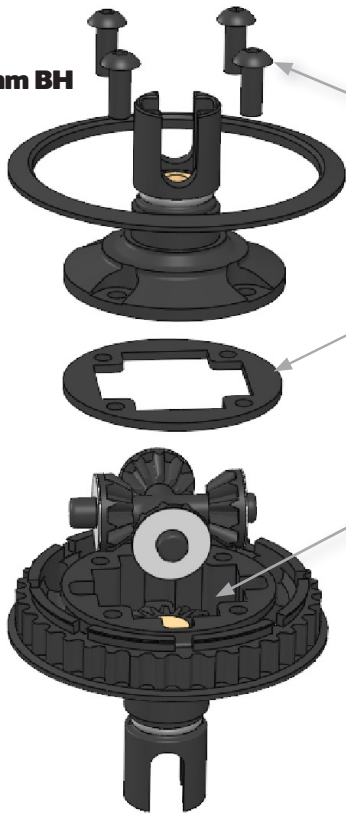


1.2

DIFFERENTIAL



M2.5x6mm BH




Do not overtighten.

IRIS-32011

Fill with 1.0g of Silicone Oil. We recommend 100k cst as starting point.

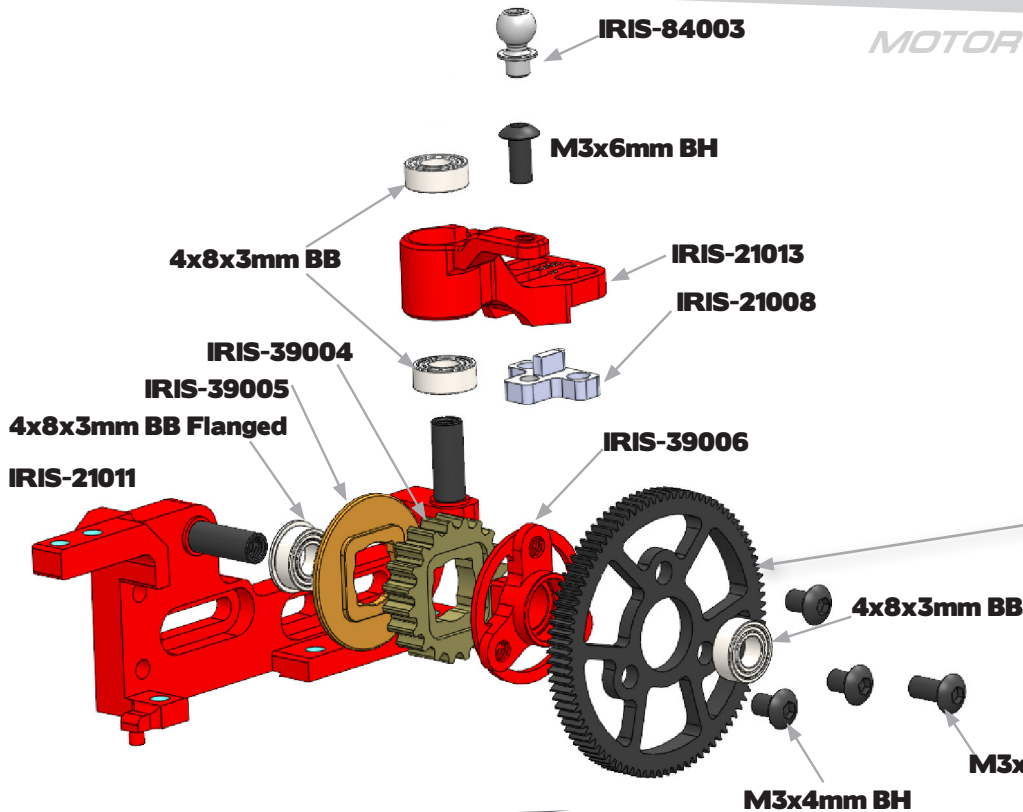
DIFFERENTIAL

1.1

x4
M2.5x6mm
Button Head Screw

2.1

MOTOR MOUNT



x2
M3x6mm
Button Head Screw

31
M3x4mm
Button Head Screw

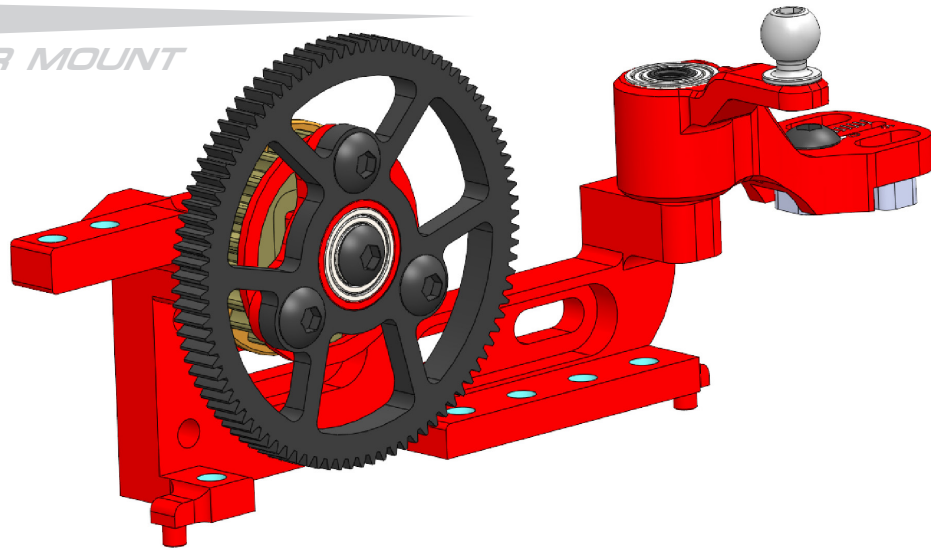
x3
4x8x3mm
Ball Bearing

x1
4x8x3mm
Flanged Ball Bearing


Spur gear is not included in the kit. Use:
IRIS-31000 90T
IRIS-31001 100T

2.1

MOTOR MOUNT



2.2

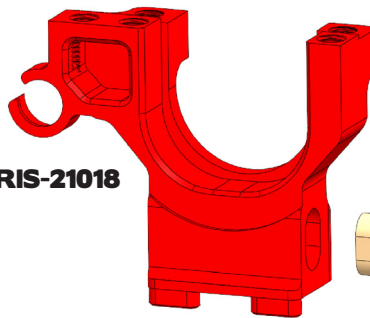
BULKHEAD LEFT

x4
M3x3mm
Set Screw



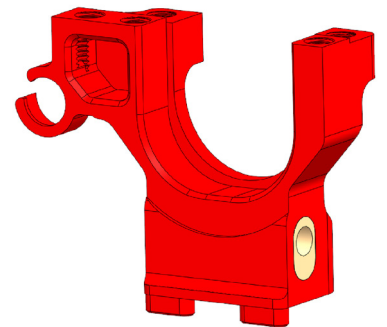
Build this step twice !

IRIS-21018



IRIS-21005

M3x3mm SS



2.3

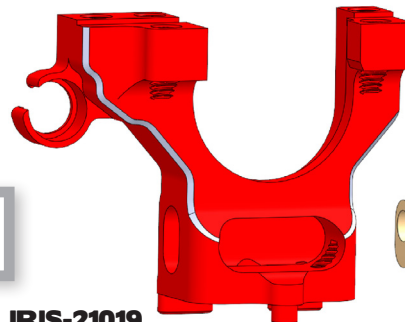
BULKHEAD RIGHT

x4
M3x3mm
Set Screw



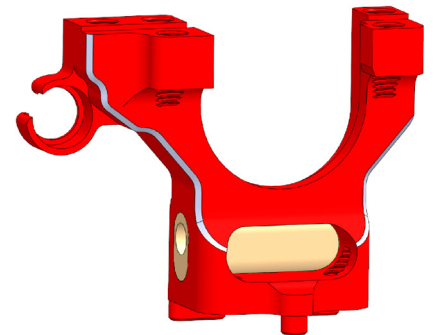
Build this step twice !

IRIS-21019



IRIS-21005

M3x3mm SS



3.1

CHASSIS



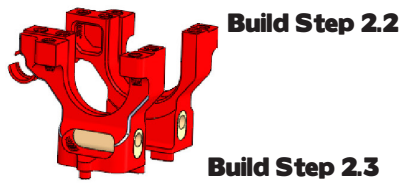
Start with #0 belt tension inserts.



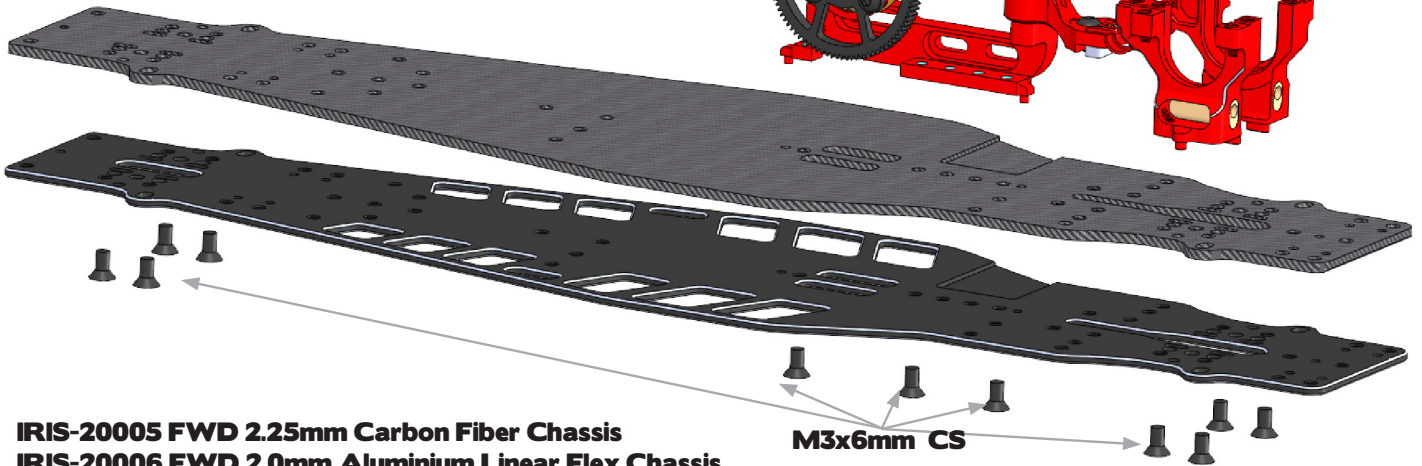
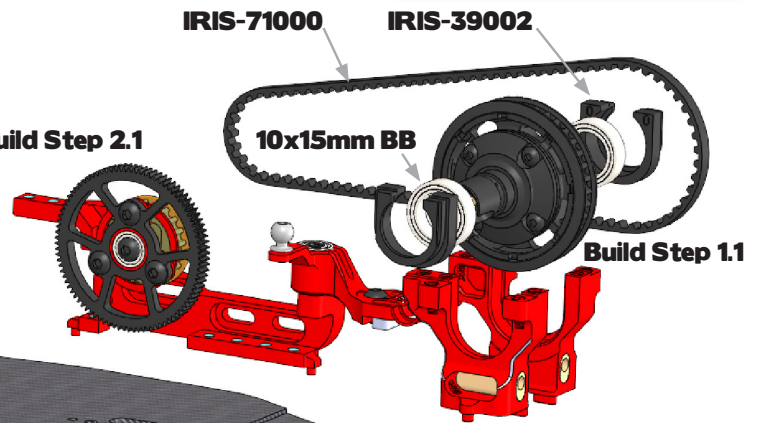
Internal drive ratio is 1.9

x11
M3x6mm
Countersunk Screw

x2
10x15mmmm
Ball Bearing



Build Step 2.1

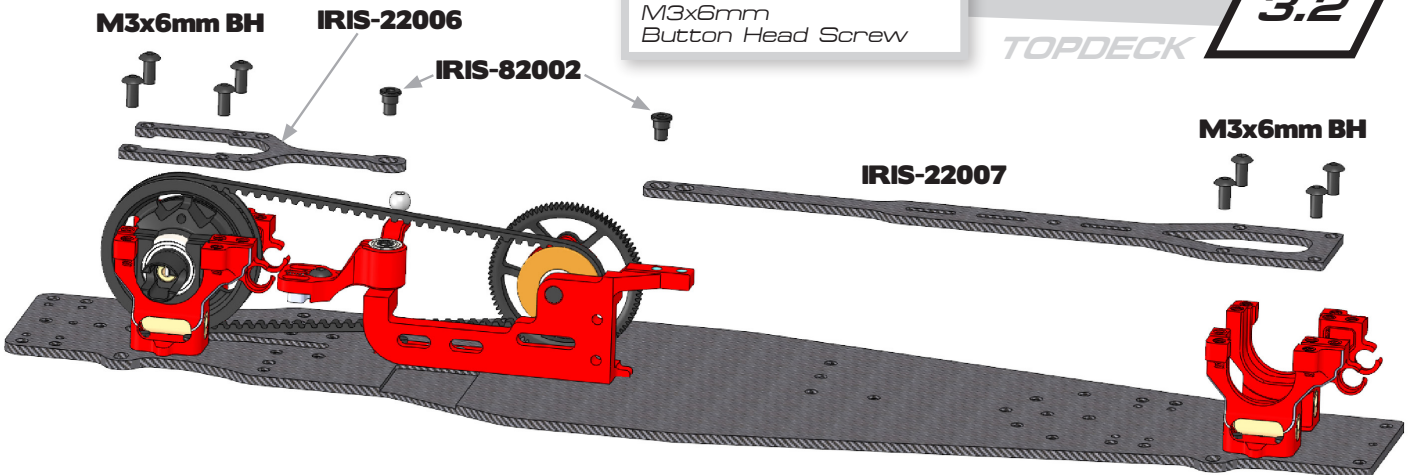


IRIS-20005 FWD 2.25mm Carbon Fiber Chassis
IRIS-20006 FWD 2.0mm Aluminium Linear Flex Chassis

3.2

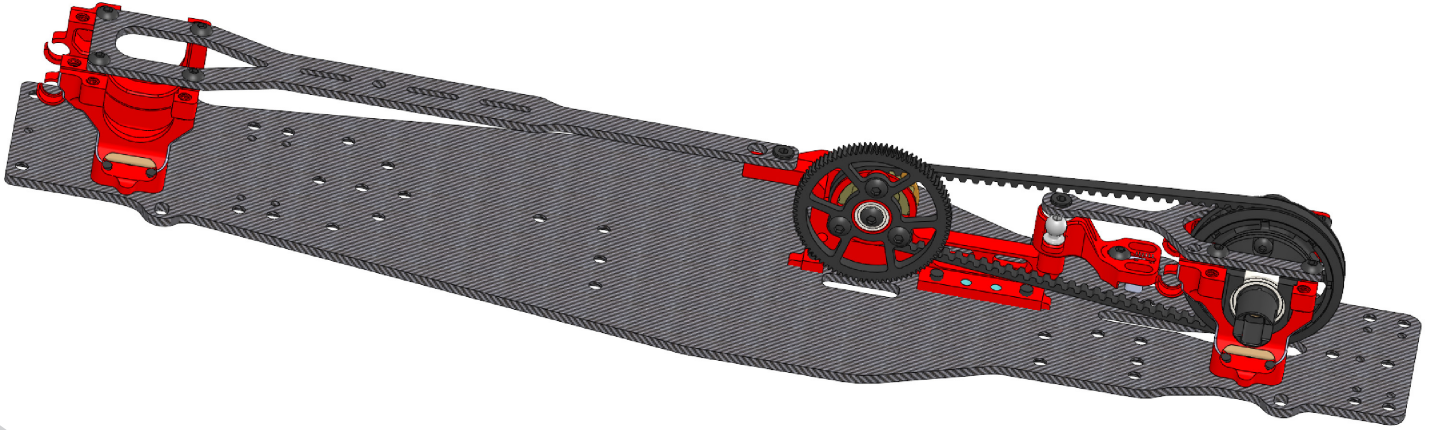
TOPDECK

x8
M3x6mm
Button Head Screw



3.2

CHASSIS AND TOPDECK MOUNTED

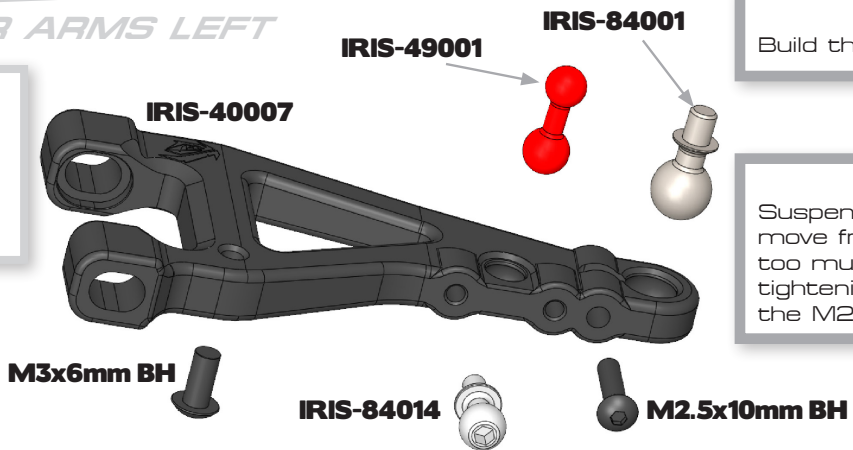


4.1

LOWER ARMS LEFT

x2
M2.5x10mm
Button Head Screw

x2
M3x6mm
Button Head Screw

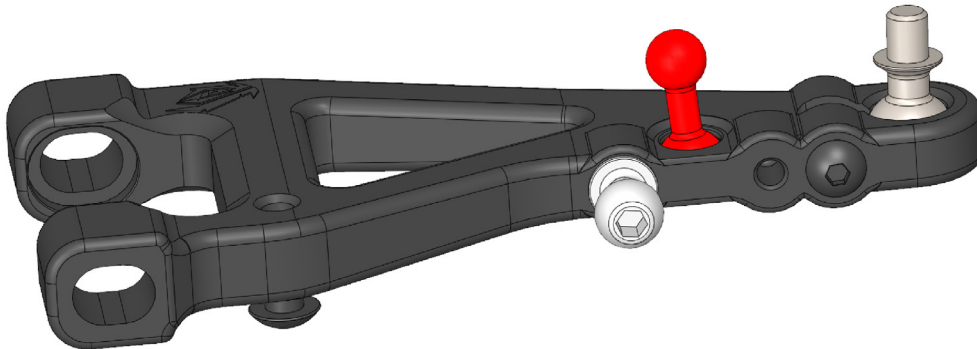


⚠
Build this step twice !

⚠
Suspension balls should move freely, yet have not too much play. Adjust by tightening or loosening the M2.5x10mm screw.

4.1

LOWER ARMS LEFT



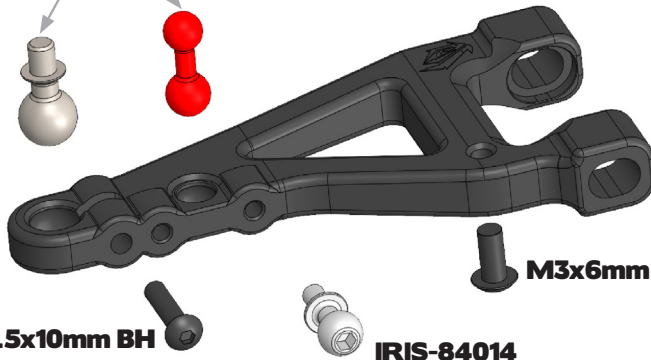


Build this step twice !



Suspension balls should move freely, yet have not too much play. Adjust by tightening or loosening the M2.5x10mm screw.

IRIS-49001
IRIS-84001



RIGHT

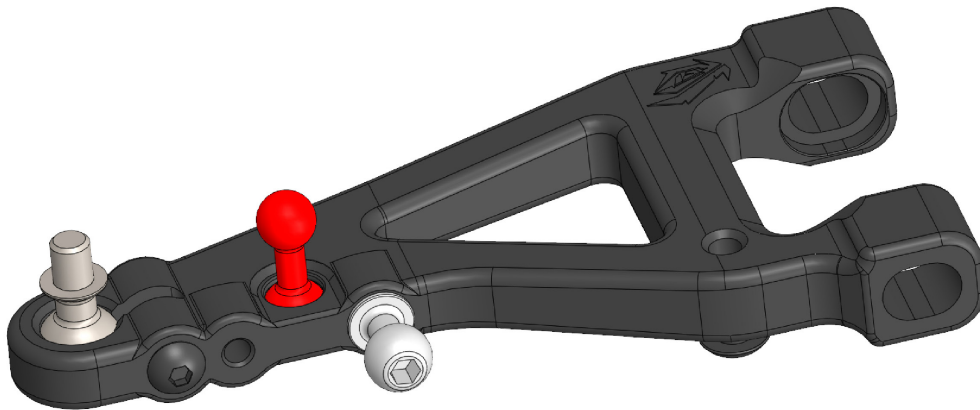
4.1

x2
M2.5x10mm
Button Head Screw

x2
M3x6mm
Button Head Screw

4.1

LOWER ARMS RIGHT



IRIS-41003

IRIS-84004

FRONT LEFT UPPER ARM

4.2

M2.5x14mm BH

M2.5x10mm BH

x1
M2.5x10mm
Button Head Screw

x1
M2.5x14mm
Button Head Screw



Use the included wrench to mount the adjustment nuts (wrench is on the battery mount injection mold).

IRIS-85001

2mm Plastic Washer

IRIS-21017

IRIS-40007

IRIS-84000



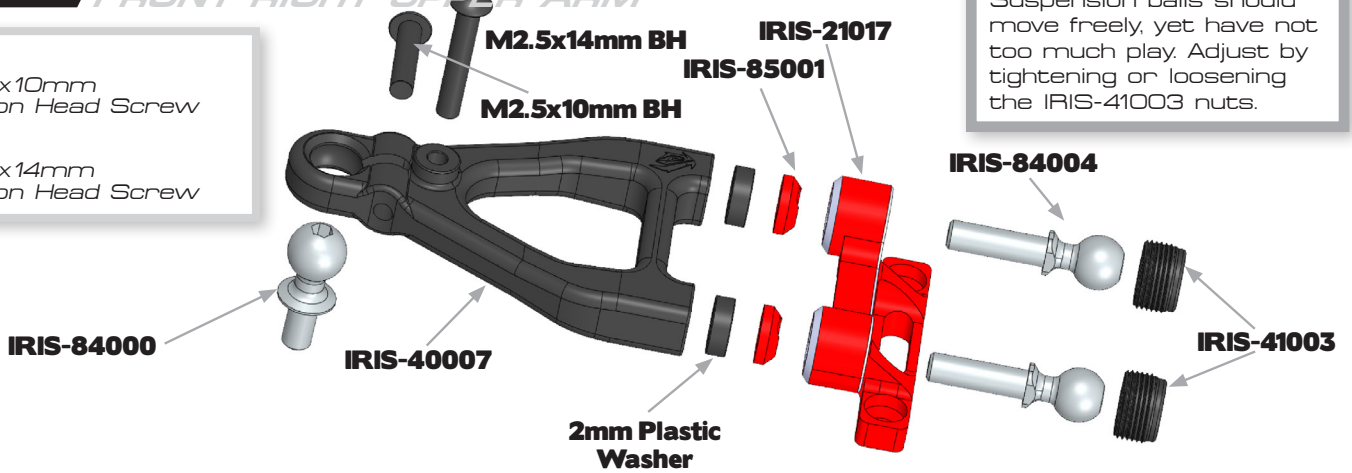
Suspension balls should move freely, yet have not too much play. Adjust by tightening or loosening the IRIS-41003 nuts.

4.2

FRONT RIGHT UPPER ARM

x1
M2.5x10mm
Button Head Screw

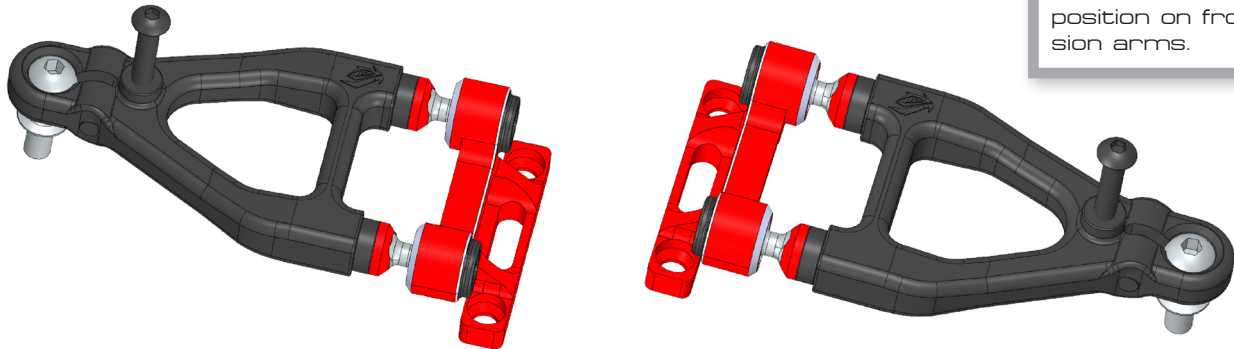
x1
M2.5x14mm
Button Head Screw



Suspension balls should move freely, yet have not too much play. Adjust by tightening or loosening the IRIS-41003 nuts.

4.2

FRONT UPPER ARMS ASSEMBLED



IRIS icon always in rear position on front suspension arms.

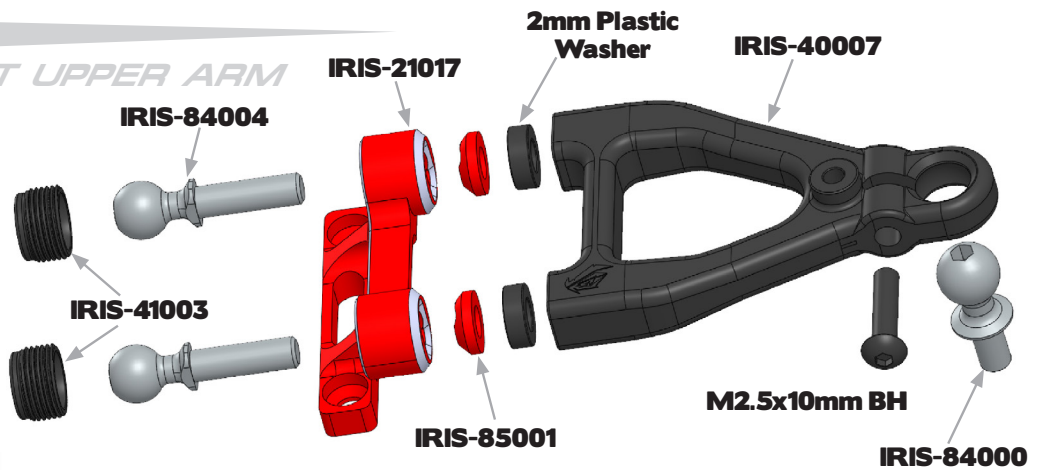
4.3

REAR LEFT UPPER ARM

x1
M2.5x10mm
Button Head Screw




Suspension balls should move freely, yet have not too much play. Adjust by tightening or loosening the IRIS-41003 nuts.

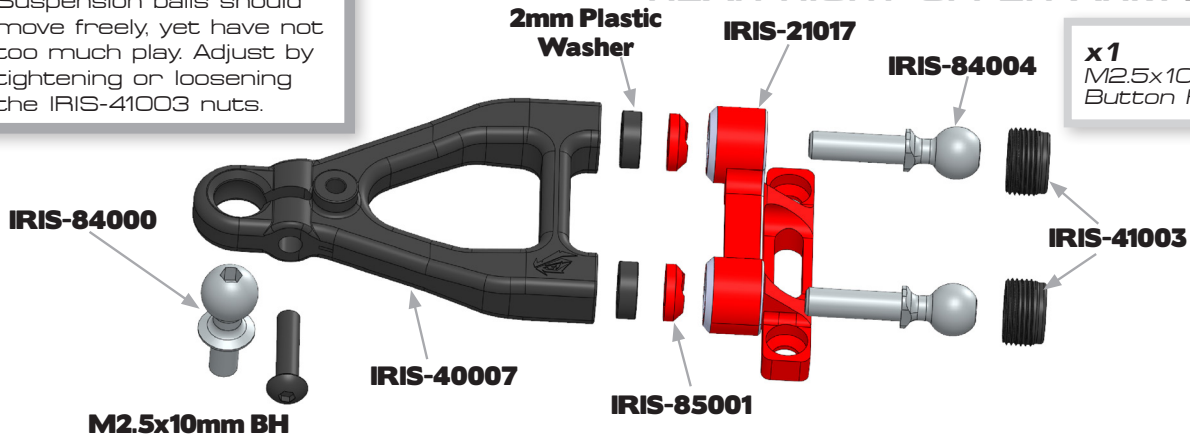


4.3

REAR RIGHT UPPER ARM

 Suspension balls should move freely, yet have not too much play. Adjust by tightening or loosening the IRIS-41003 nuts.

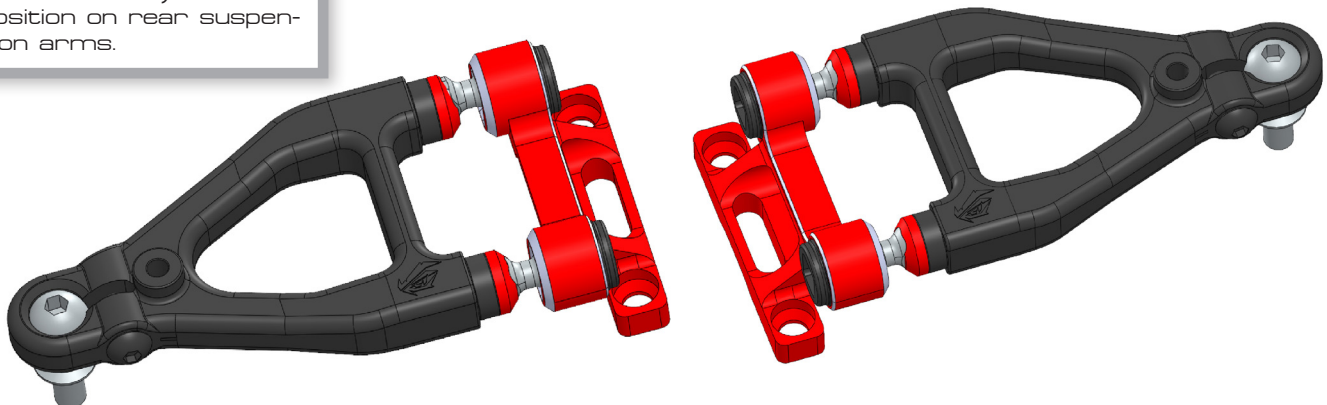
x1
M2.5x10mm
Button Head Screw



4.3

REAR UPPER ARMS ASSEMBLED

 IRIS icon always in front position on rear suspension arms.

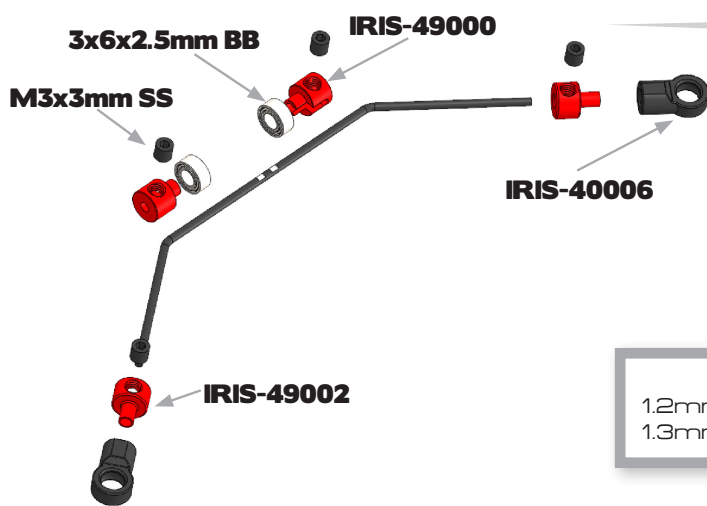


4.4

ANTI-ROLL BAR

x8
M3x3mm
Set Screw

x4
3x6x2.5mm
Ball Bearing



 1.2mm front anti-roll bar
1.3mm rear anti-roll bar

 Build this step twice !

4.5

MOUNTING OF FRONT LOWER

x2
M3x3mm
Set Screw

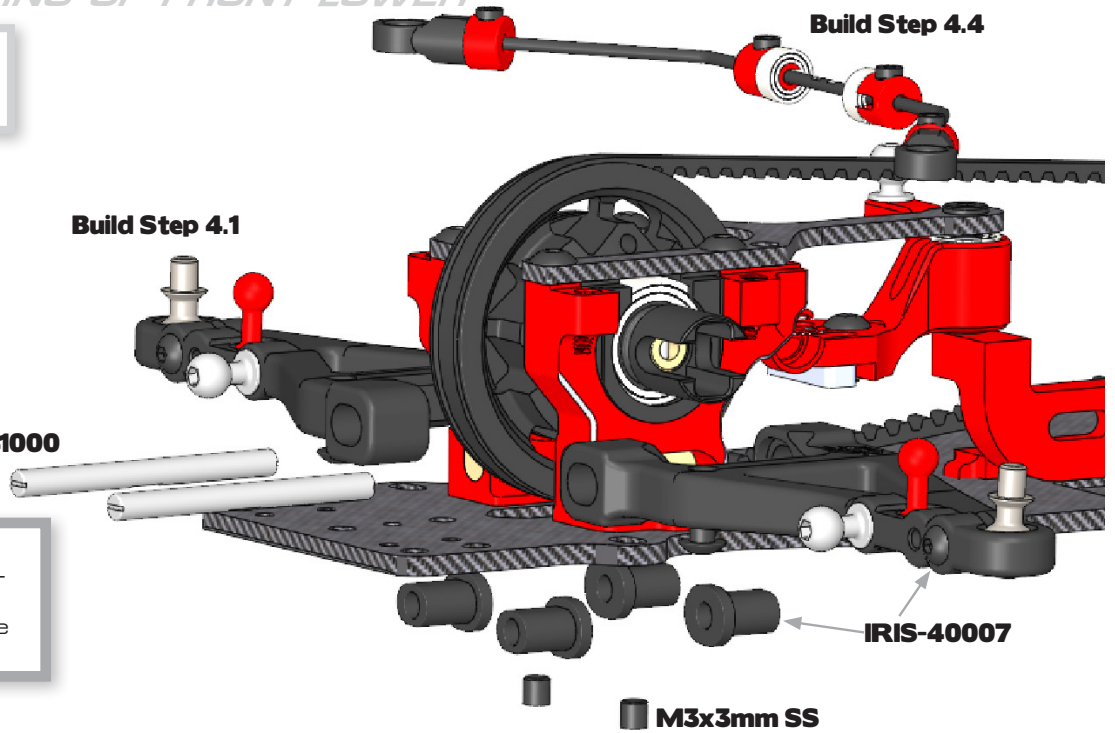
IRIS-41000



Use a 3.0mm arm reamer to increase the insert hole size until the hinge pin moves freely.

Build Step 4.1

Build Step 4.4

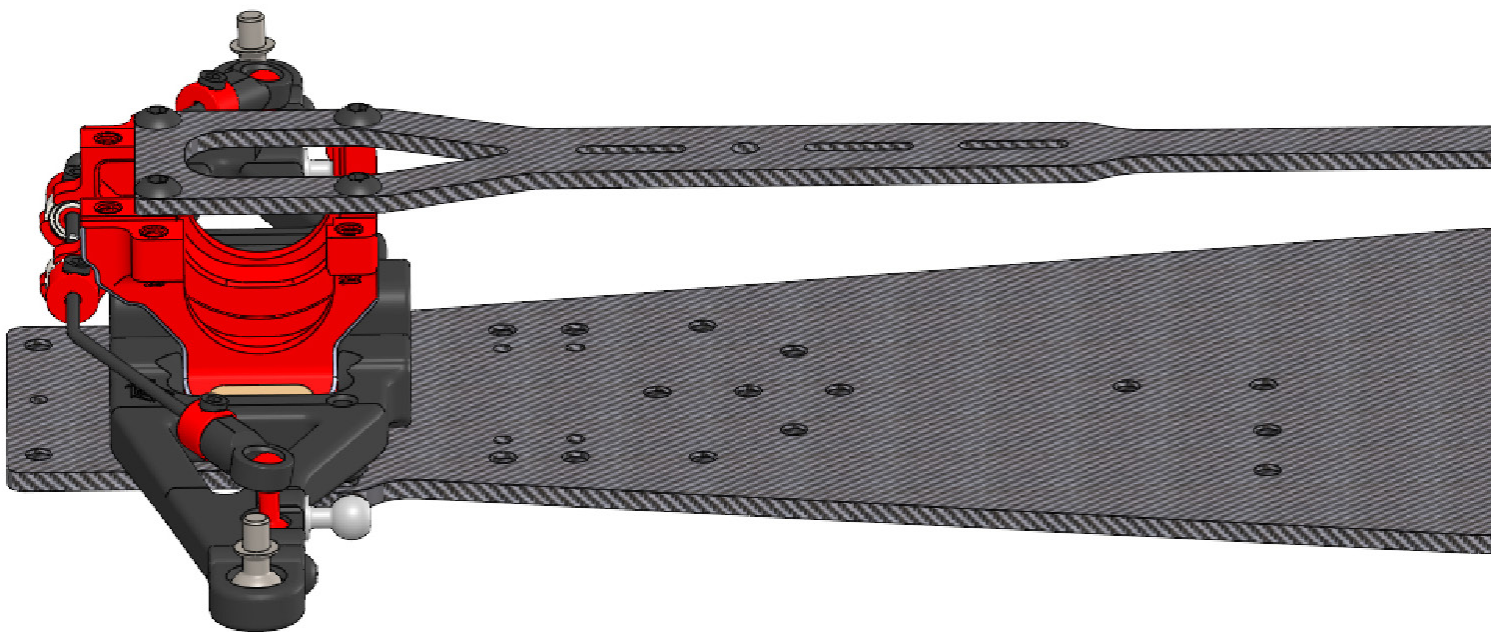


IRIS-40007

M3x3mm SS

4.5

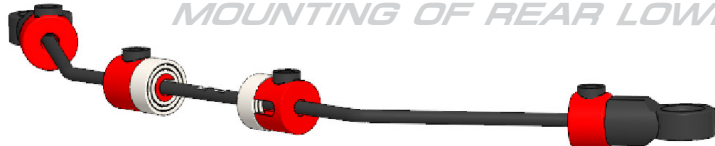
LOWER ARMS MOUNTED



4.5

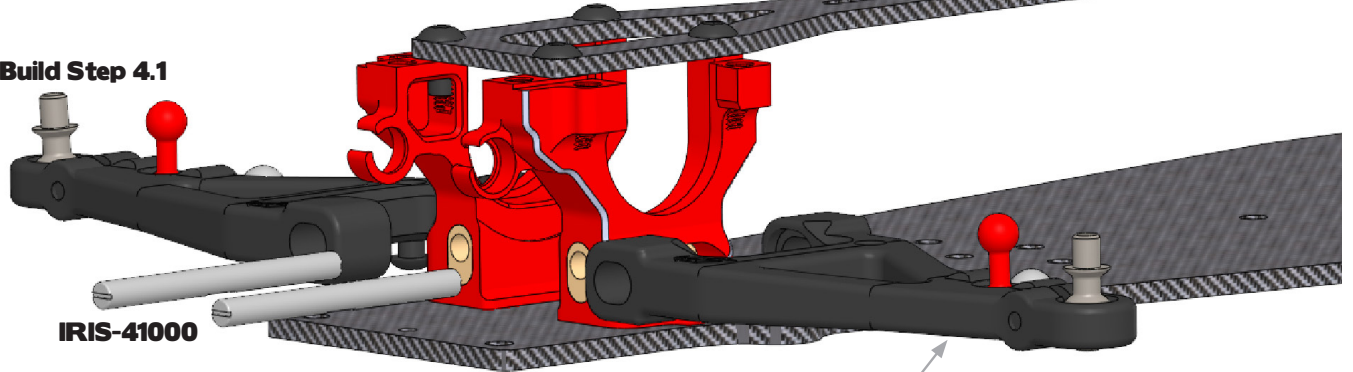
MOUNTING OF REAR LOWER ARMS

Build Step 4.4



x2
M3x3mm
Set Screw

Build Step 4.1

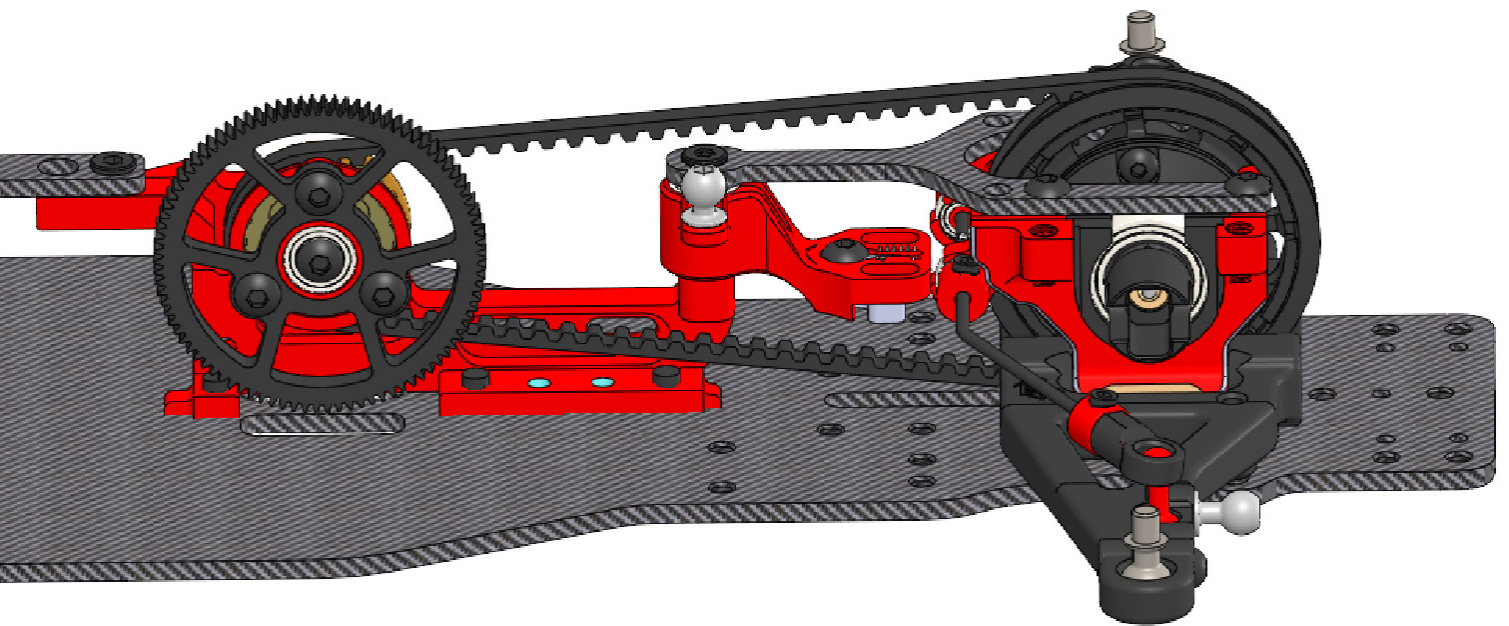


IRIS-41000



IRIS-40007

M3x3mm SS



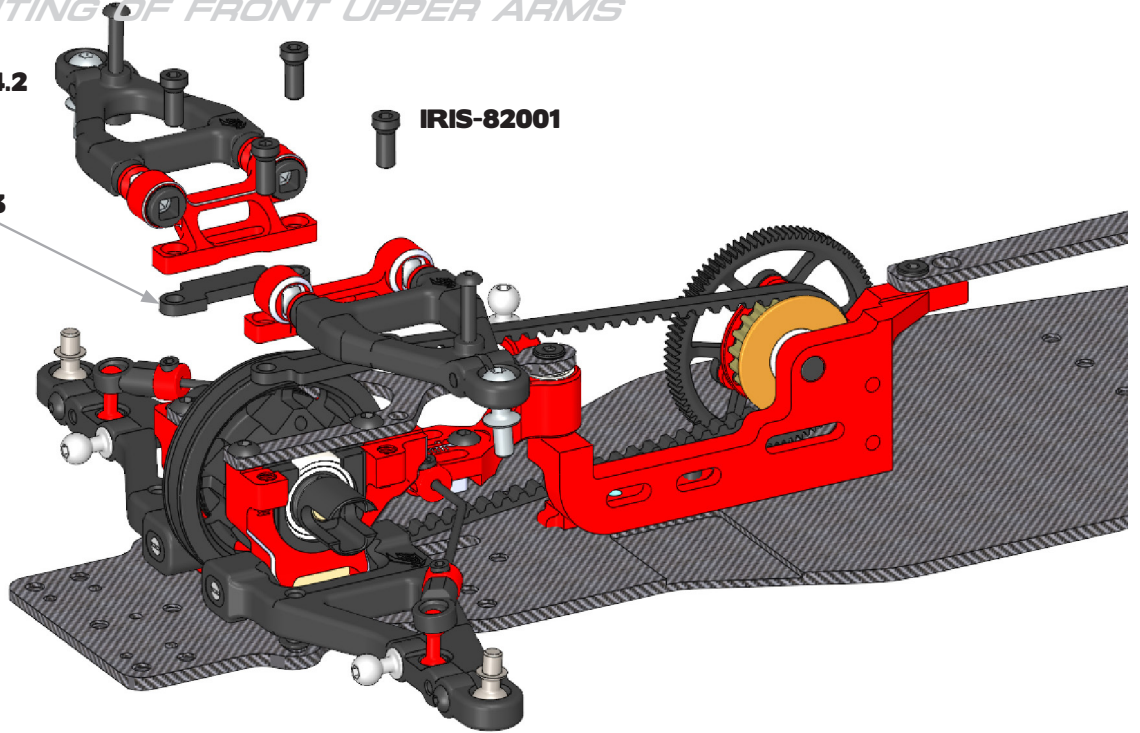
4.6

MOUNTING OF FRONT UPPER ARMS

Build Step 4.2

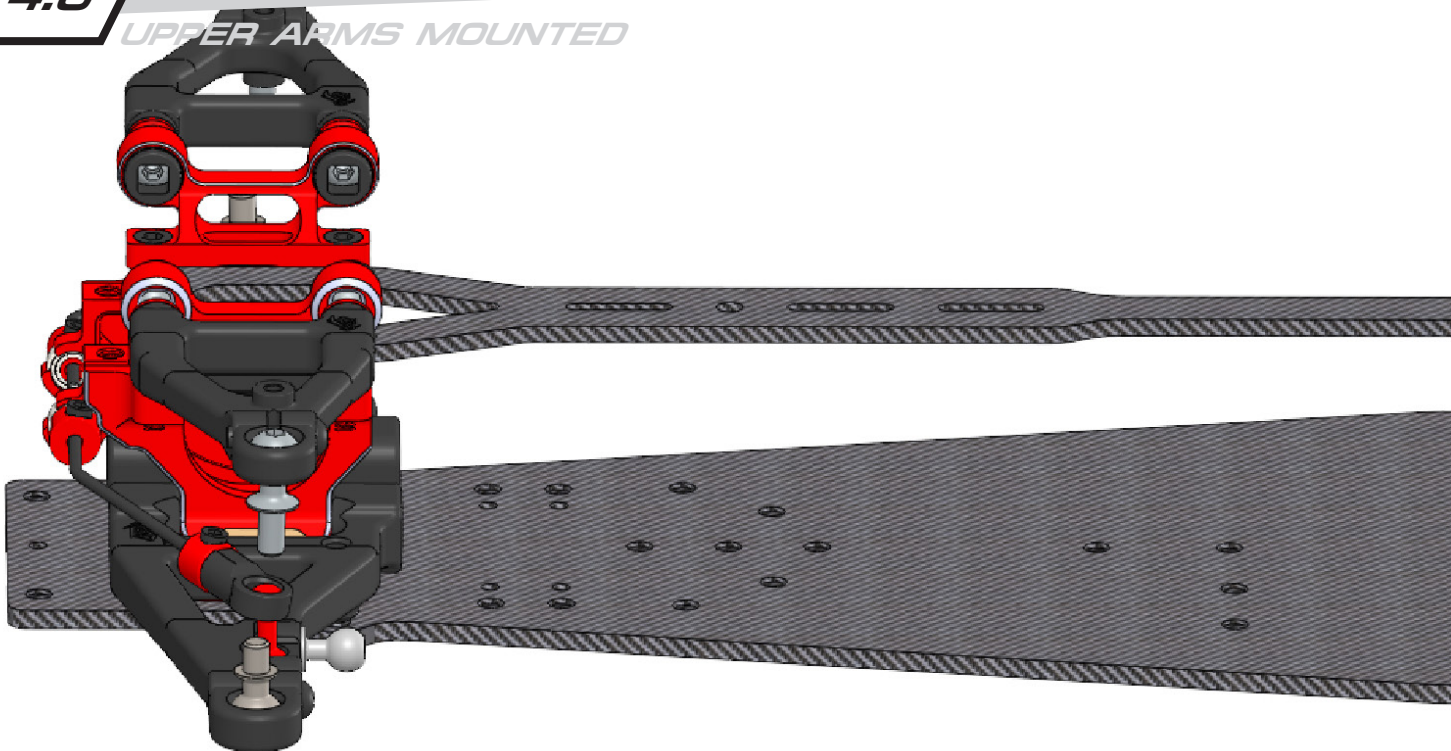
IRIS-23003
2mm

IRIS-82001



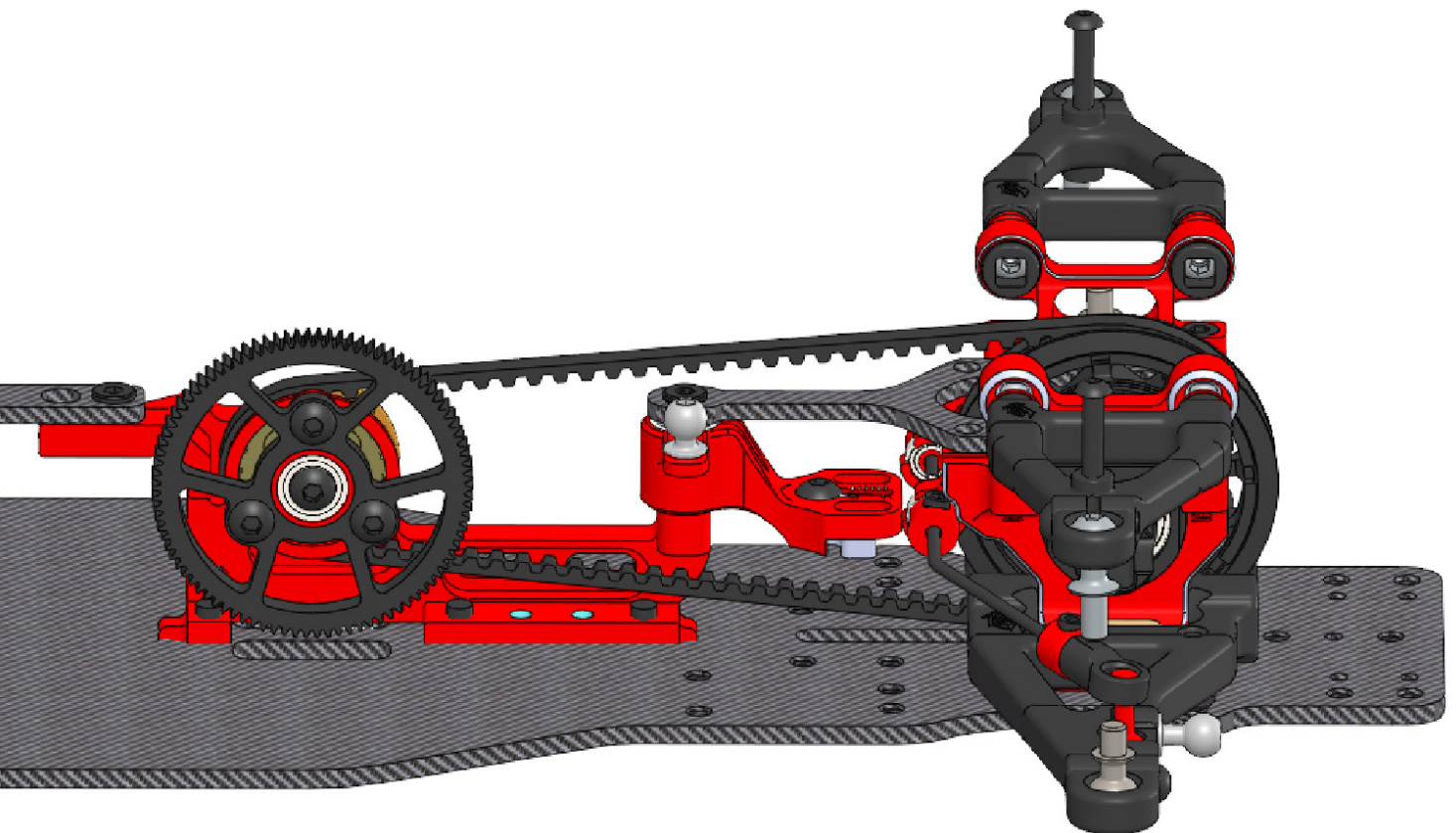
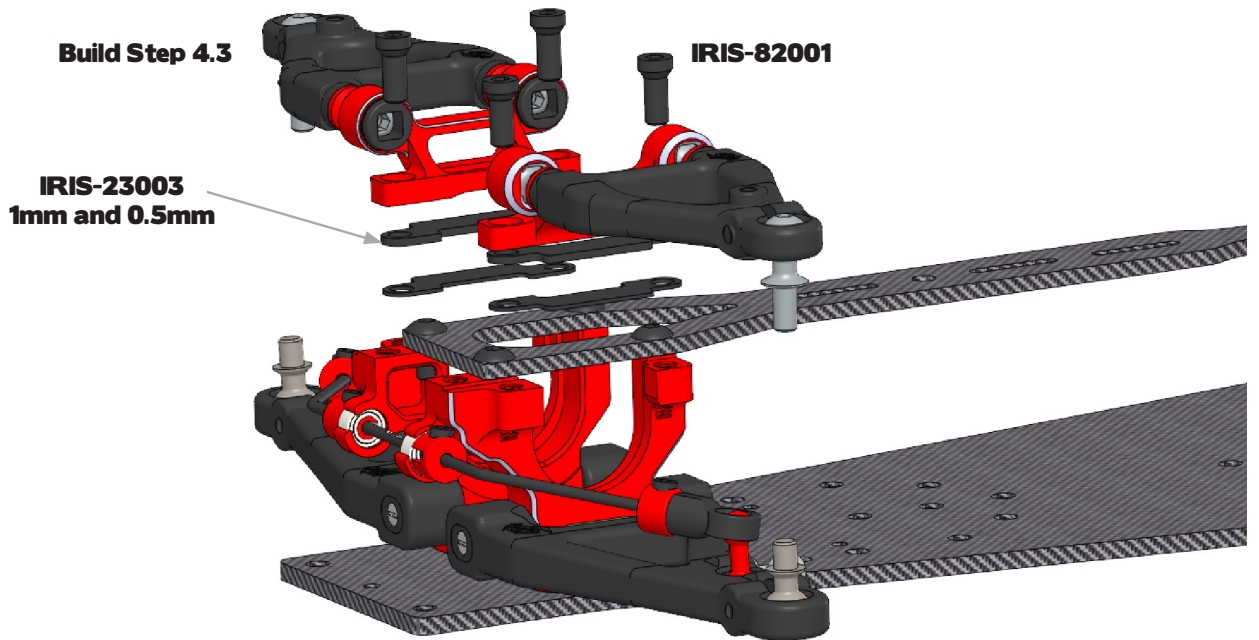
4.6

UPPER ARMS MOUNTED



4.6

MOUNTING OF REAR UPPER ARMS



5.1

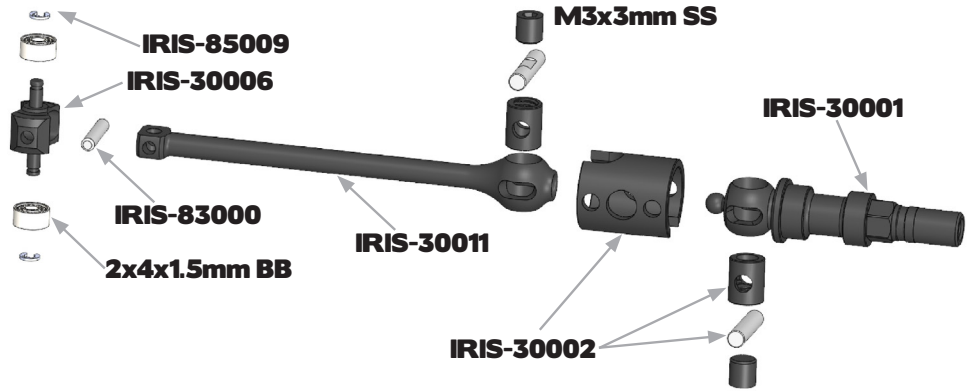
FRONT DRIVESHAFT

x2
M3x3mm
Set Screw

x2
2x4x1.5mm
Ball Bearing



Build this step twice !



5.1

FRONT DRIVESHAFT



Lubricate using RP-0494
RUDDOG Drivetrain Oil



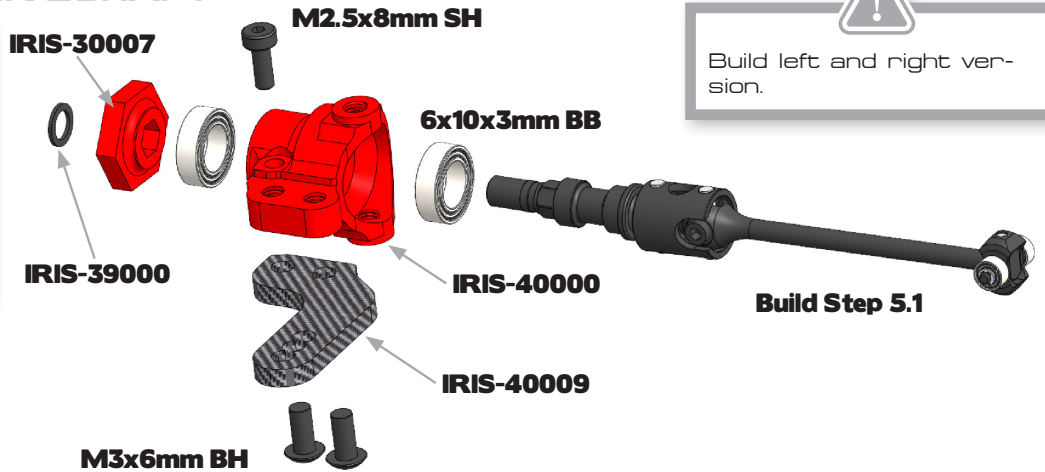
6.1

REAR DRIVESHAFT

x4
M3x6mm
Button Head Screw

x2
M2.5x8mm
Socket Head Screw

x4
6x10x3mm
Ball Bearing



Build left and right version.

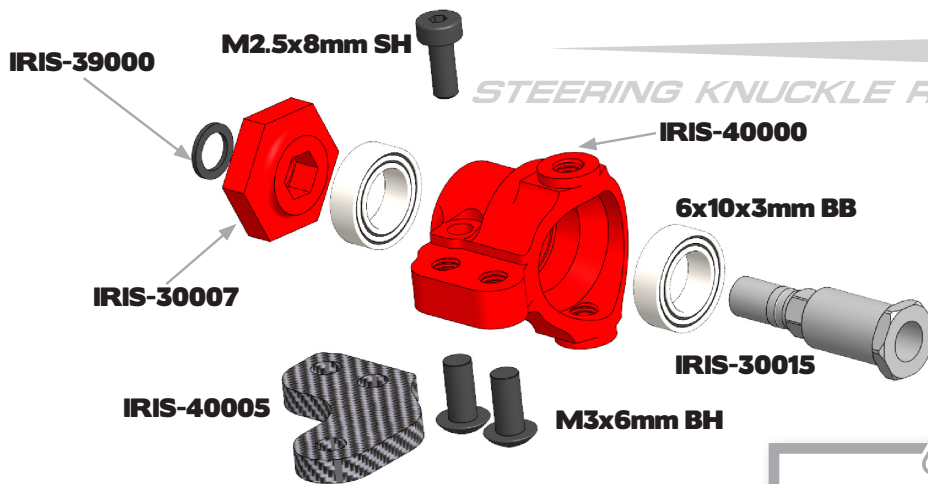
6.1

STEERING KNUCKLE FRONT L+R



6.2

STEERING KNUCKLE REAR L+R

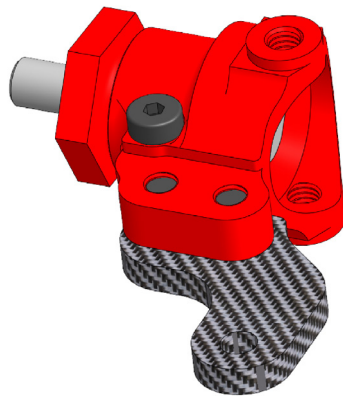


- x4**
M3x6mm
Button Head Screw
- x2**
M2.5x8mm
Socket Head Screw
- x4**
6x10x3mm
Ball Bearing


Build left and right version.

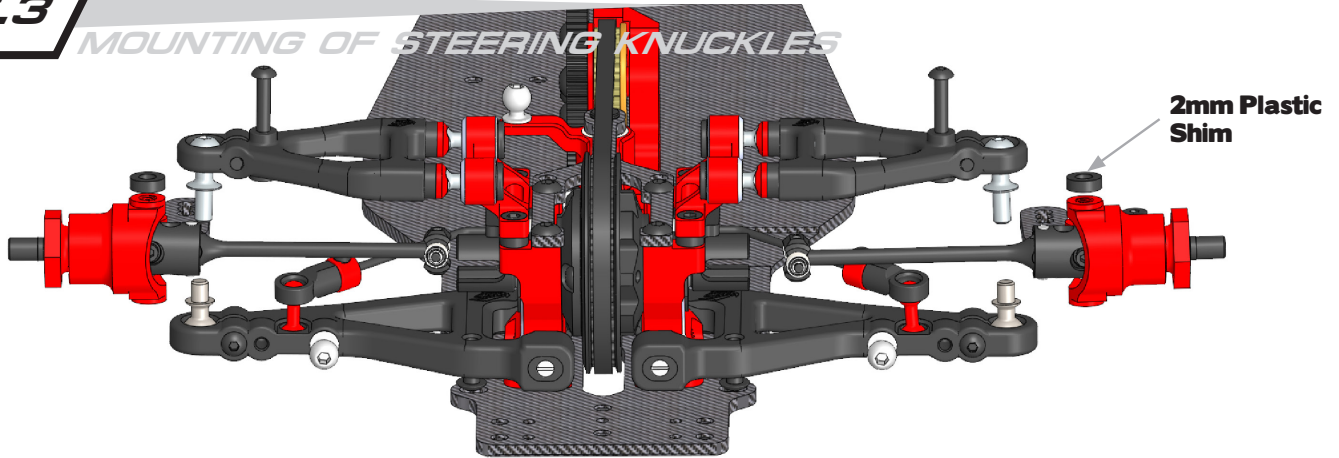
6.2

STEERING KNUCKLE REAR L+R



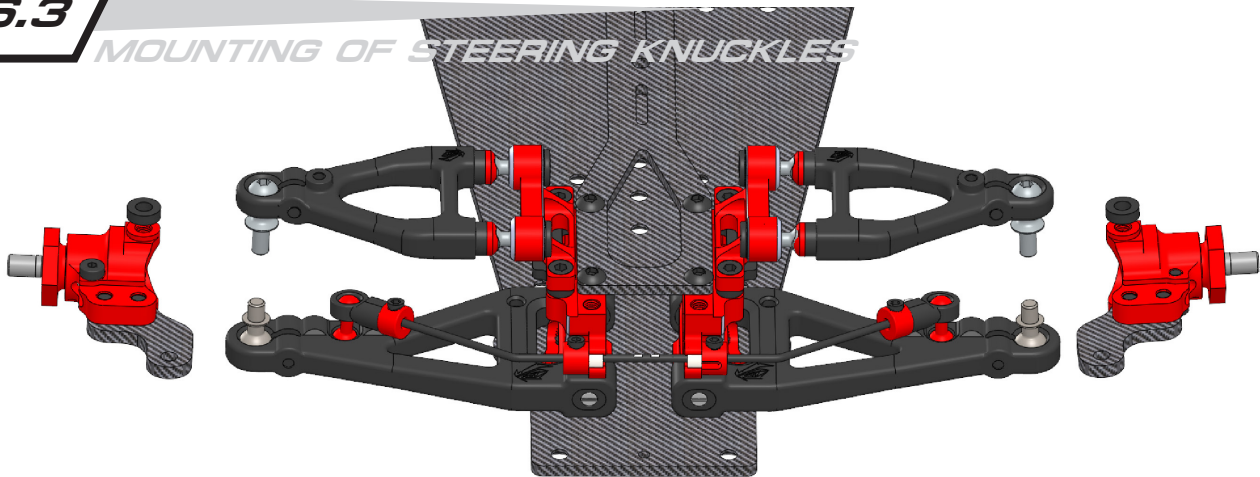
6.3

MOUNTING OF STEERING KNUCKLES



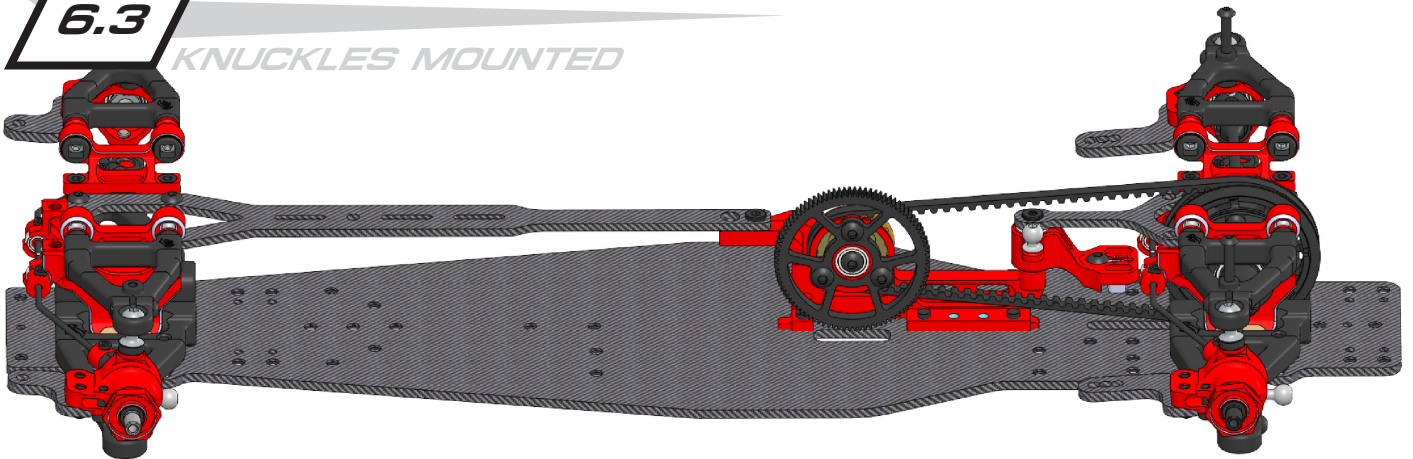
6.3

MOUNTING OF STEERING KNUCKLES

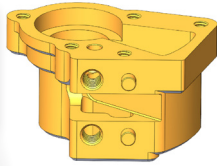



6.3

KNUCKLES MOUNTED



 Lubricate using RUDDOG Red Stuff Grease or similar.

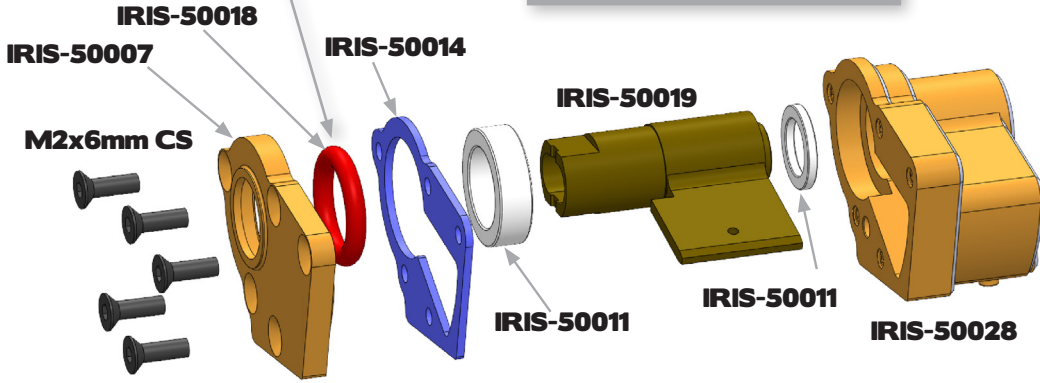


 Insert guide shim and fill with silicone oil. Afterwards insert piston and complete shock build.

7.1


SHOCKS LEFT

x10
M2x6mm
Counter Sunk Screw



 500 cst for front shocks
800 cst for rear shocks

 Build this step twice !

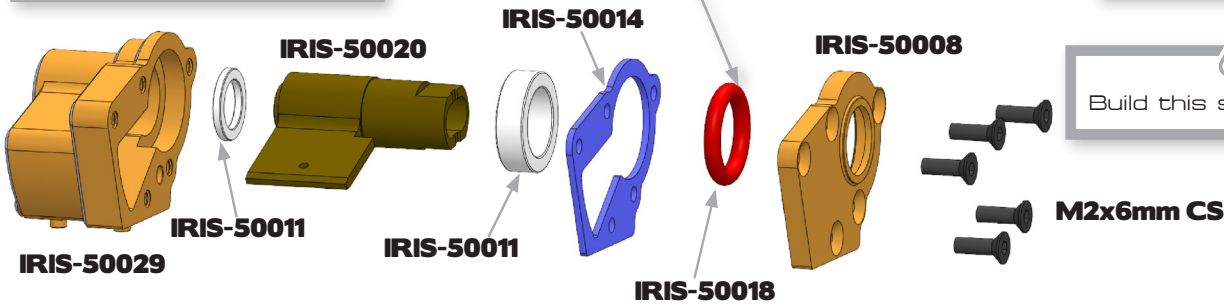
 Insert guide shim and fill with silicone oil. Afterwards insert piston and complete shock build.

 Lubricate using RUDDOG Red Stuff Grease or similar.

7.2

SHOCKS RIGHT

x10
M2x6mm
Counter Sunk Screw



 Build this step twice !

 Build left and right version.

7.3

FRONT ROCKERS



x4
M2x4mm
Counter Sunk Screw

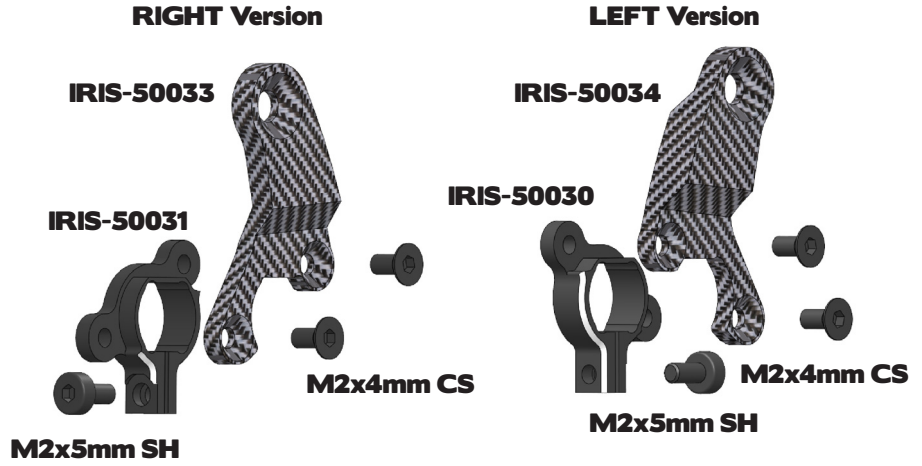
x2
M2x5mm
Socket Head Screw

7.4

REAR ROCKERS

 Build left and right version.

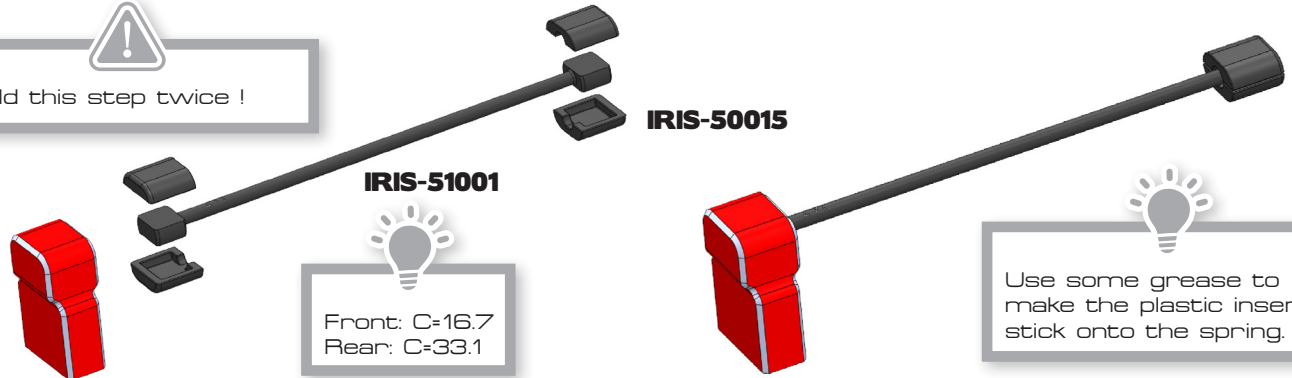
- x4**
M2x4mm
Counter Sunk Screw
- x2**
M2x5mm
Socket Head Screw




7.5

SPRING MOUNTS FRONT

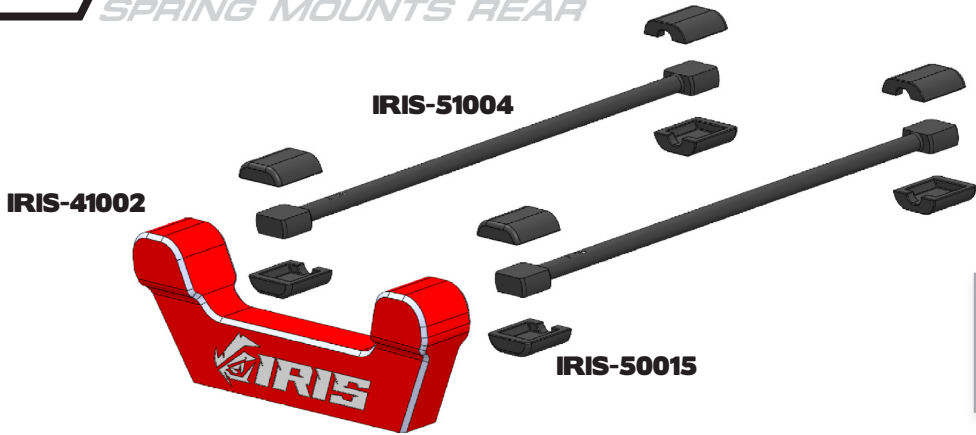
 Build this step twice !




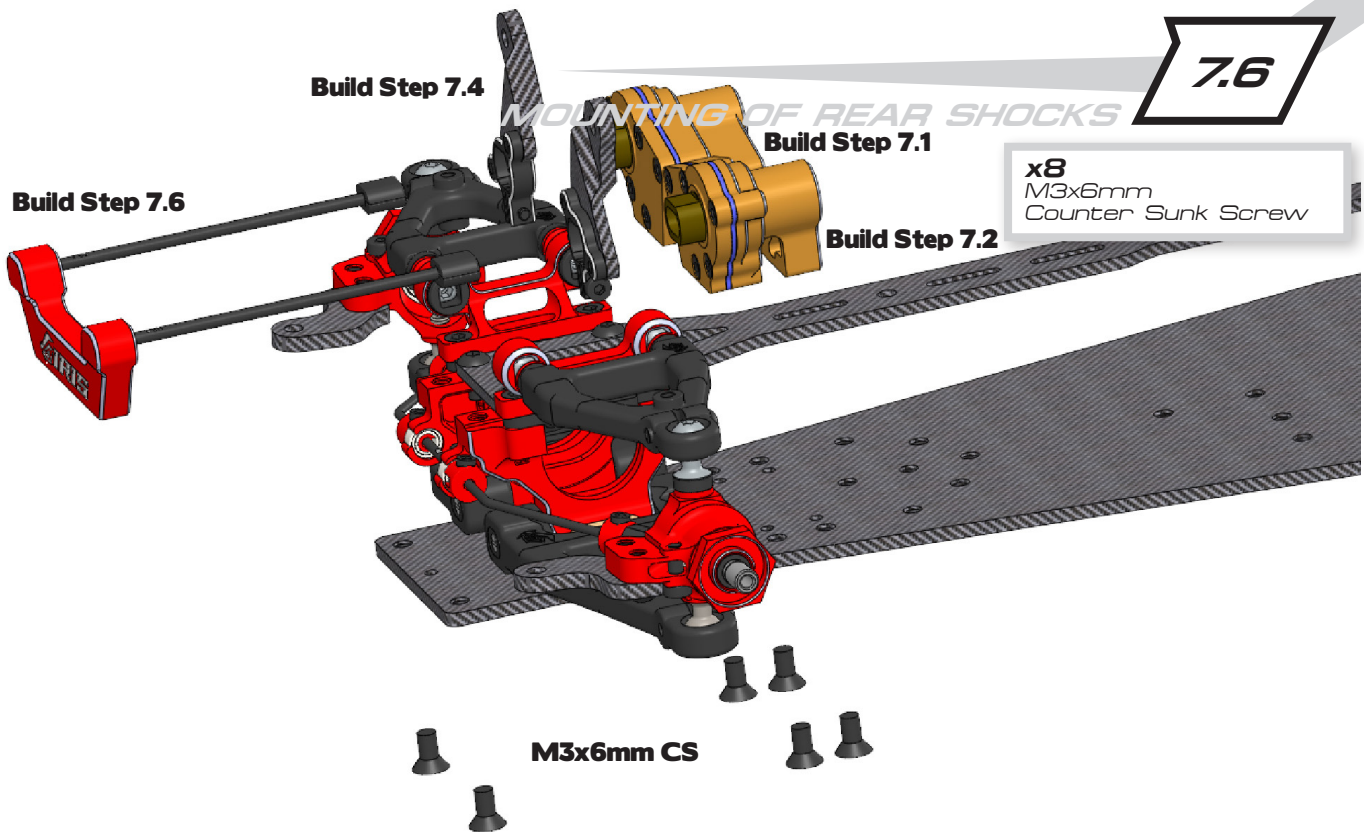
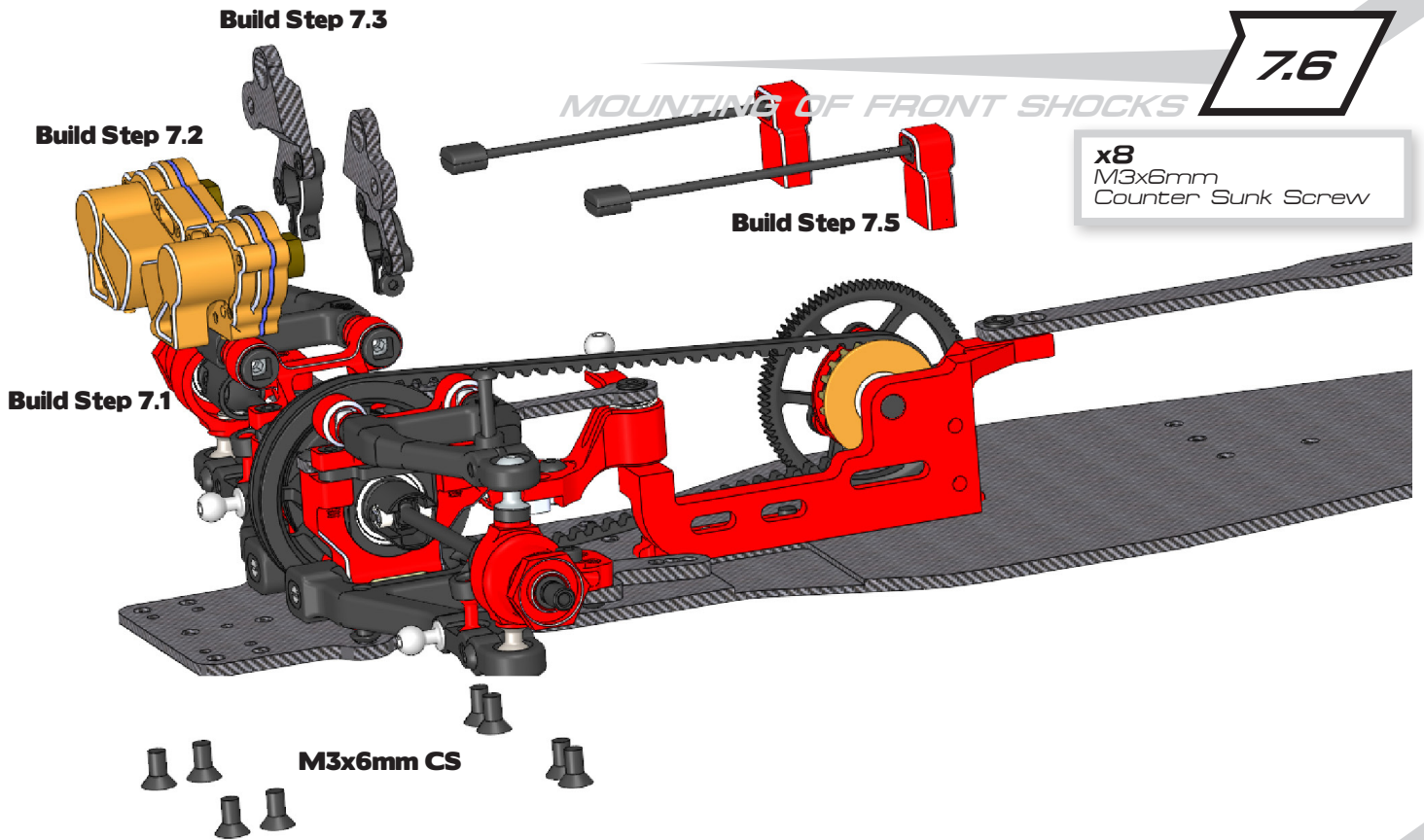
 Use some grease to make the plastic inserts stick onto the spring.

7.6

SPRING MOUNTS REAR

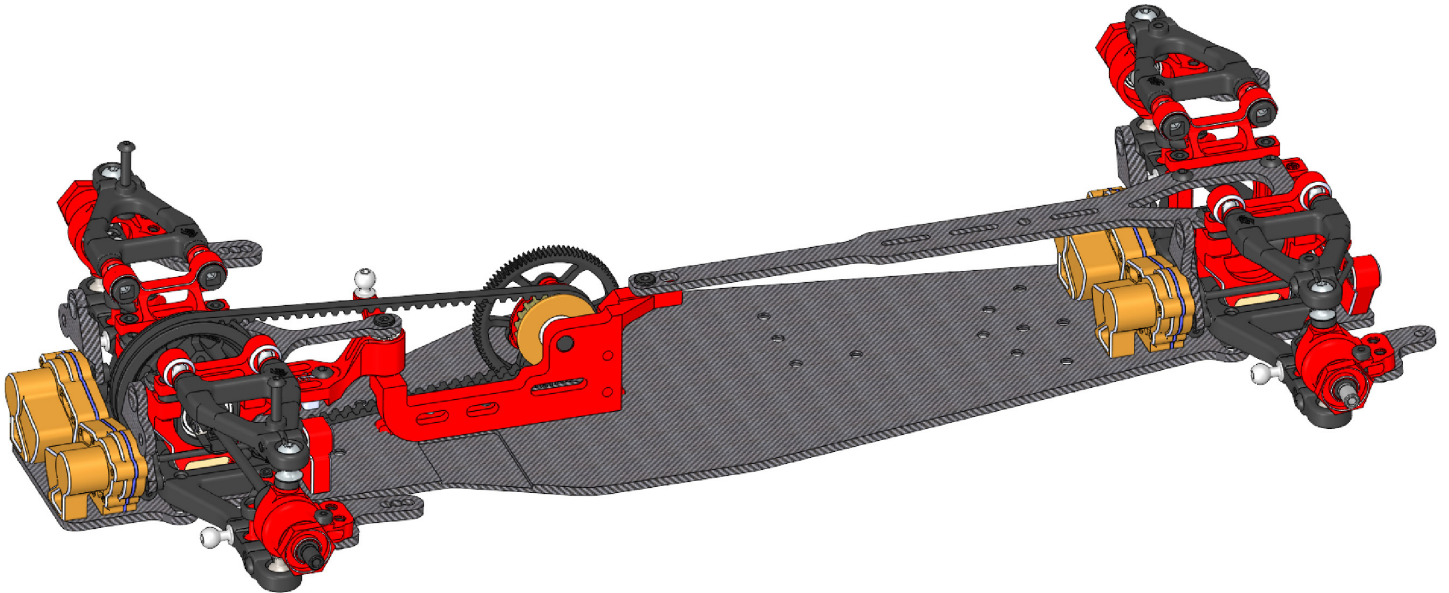


 Use some grease to make the plastic inserts stick onto the spring.



7.6

SHOCKS MOUNTED



8.1

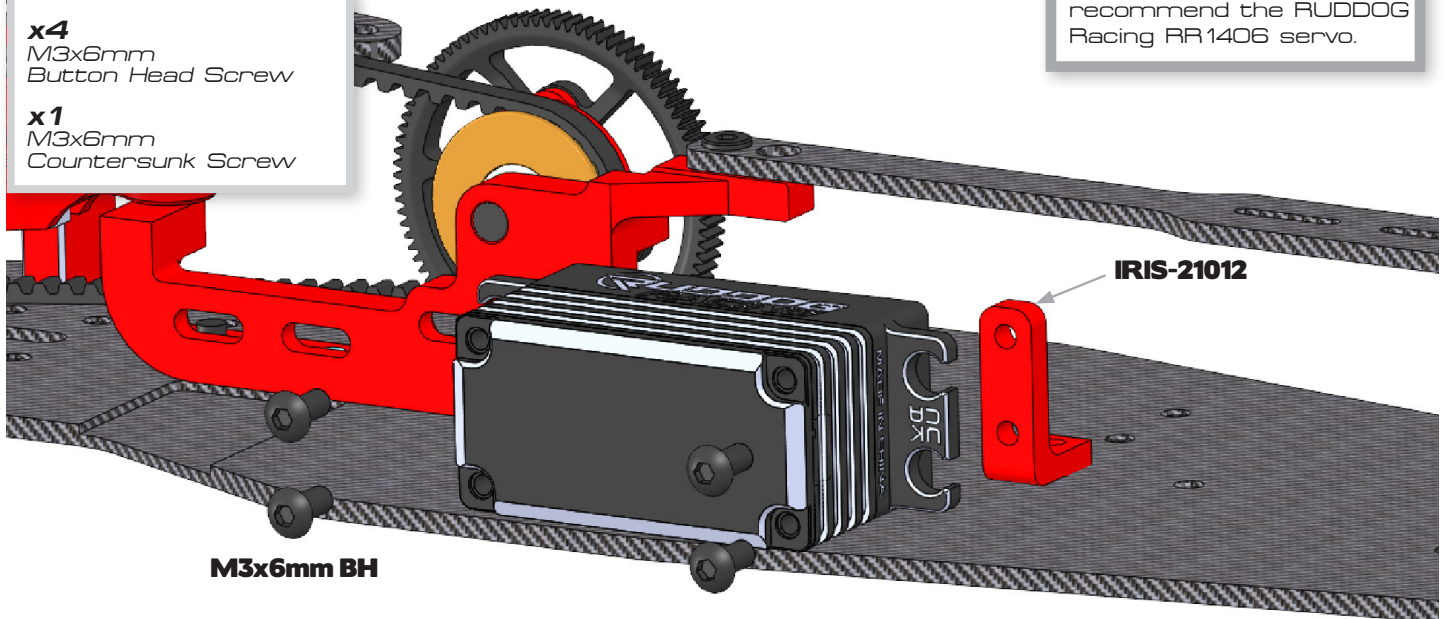
SERVO

x4
M3x6mm
Button Head Screw

x1
M3x6mm
Countersunk Screw



Servo is not included. We recommend the RUDDOG Racing RR1406 servo.



M3x6mm BH

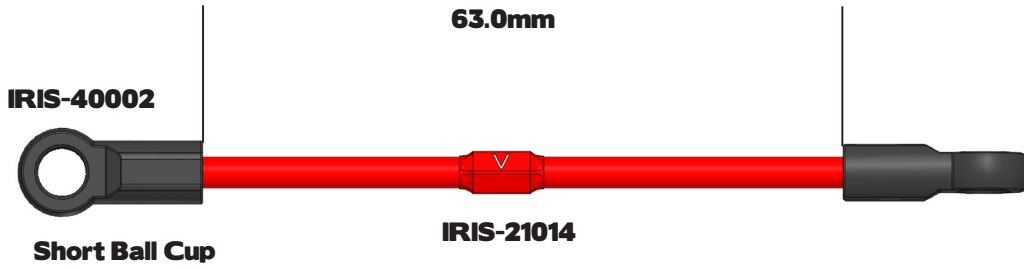
IRIS-21012

M3x6mm CS



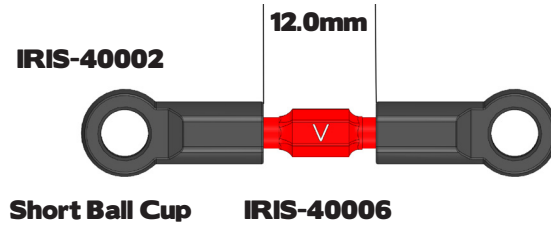
9.1

SERVO LINK



9.2

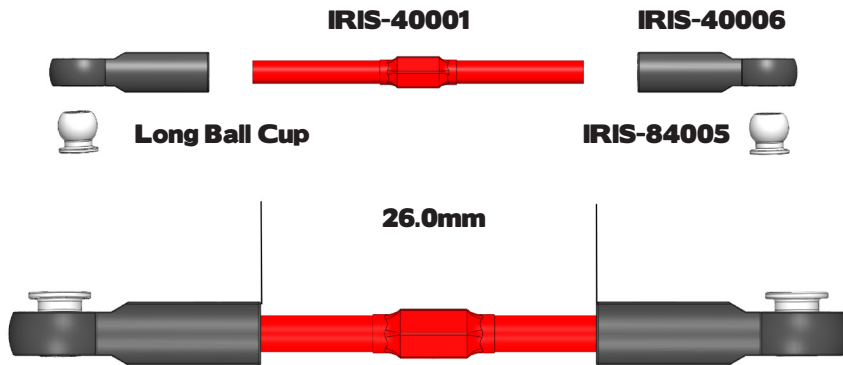
SHOCK LINK




Build the shock link 4 times!

9.3

FRONT STEERING LINKS



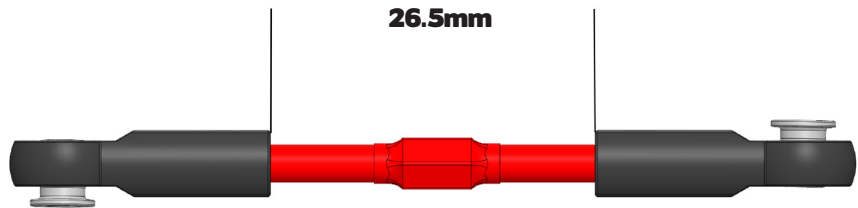

Build this step twice!

9.4

REAR SUSPENSION LINKS



Build this step twice!



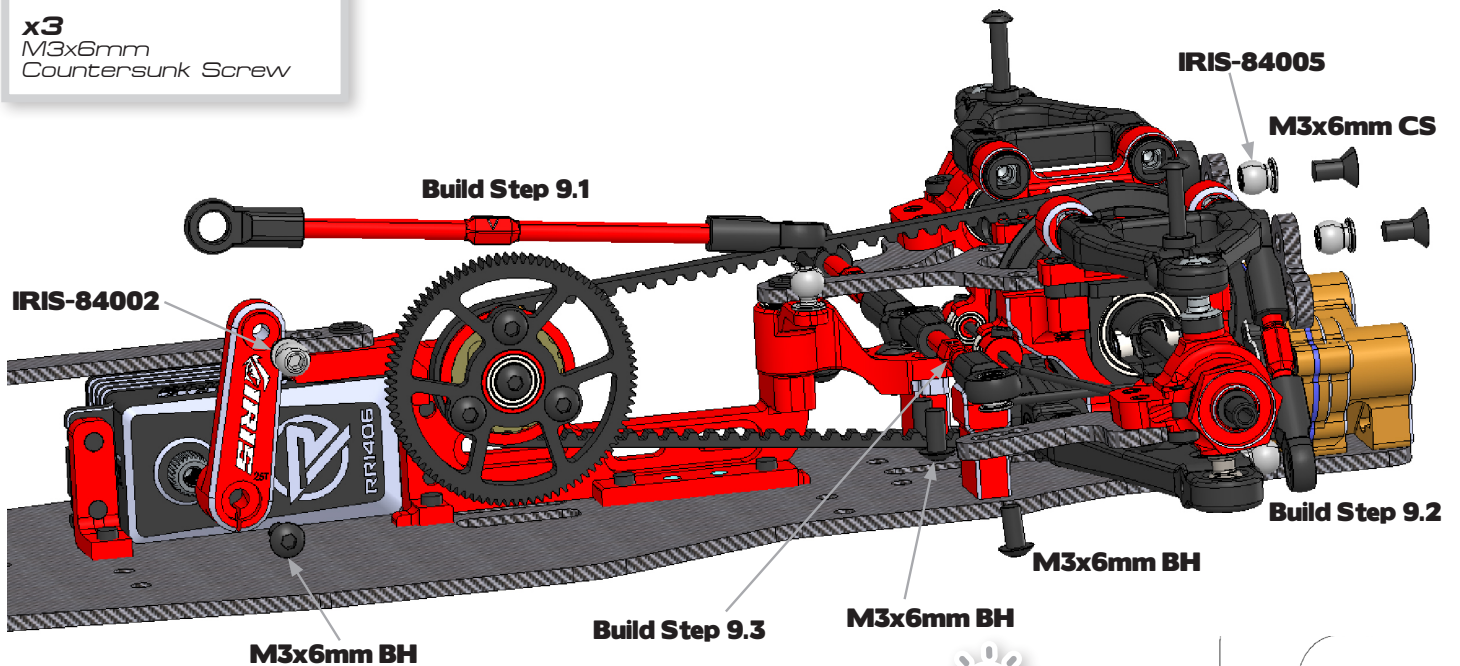
9.5

MOUNTING OF FRONT LINKS

x2
M3x6mm
Button Head Screw

x2
M3x8mm
Button Head Screw

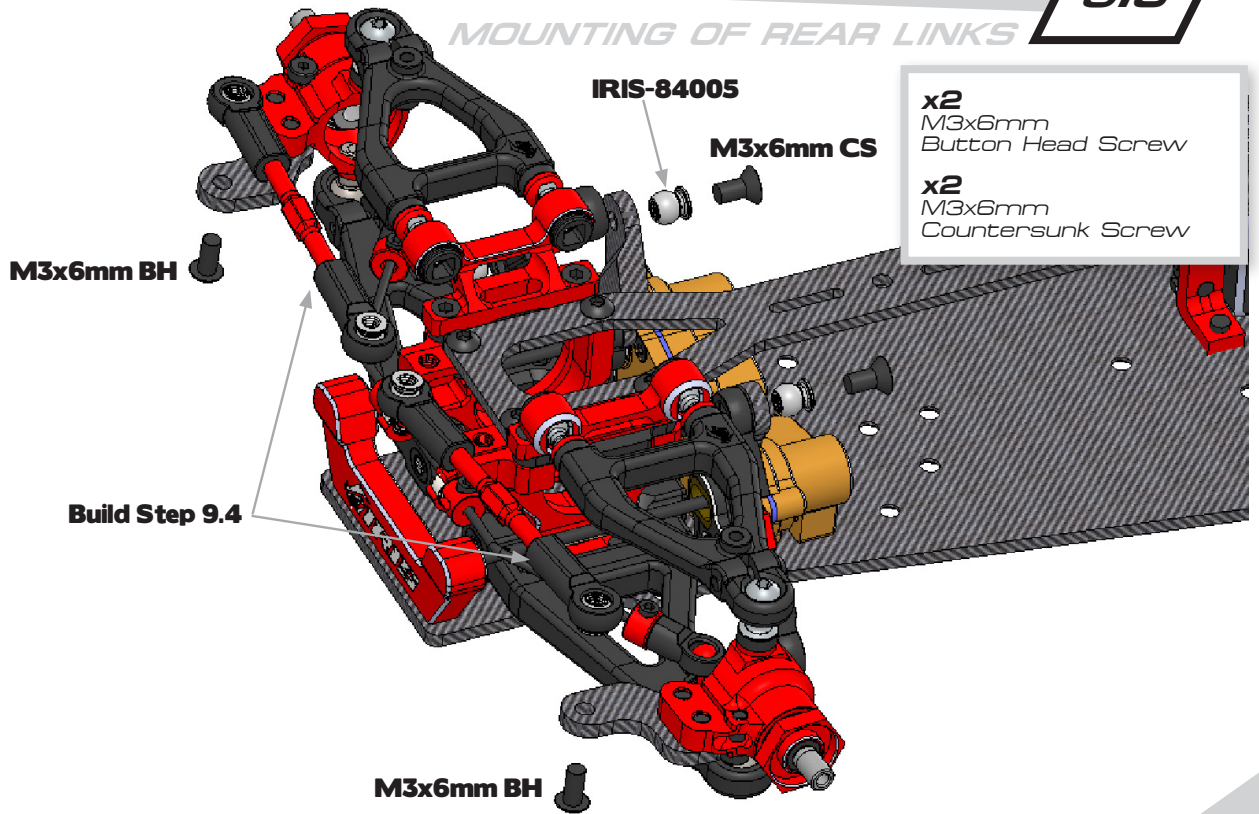
x3
M3x6mm
Countersunk Screw



Use middle hole on steering arm.

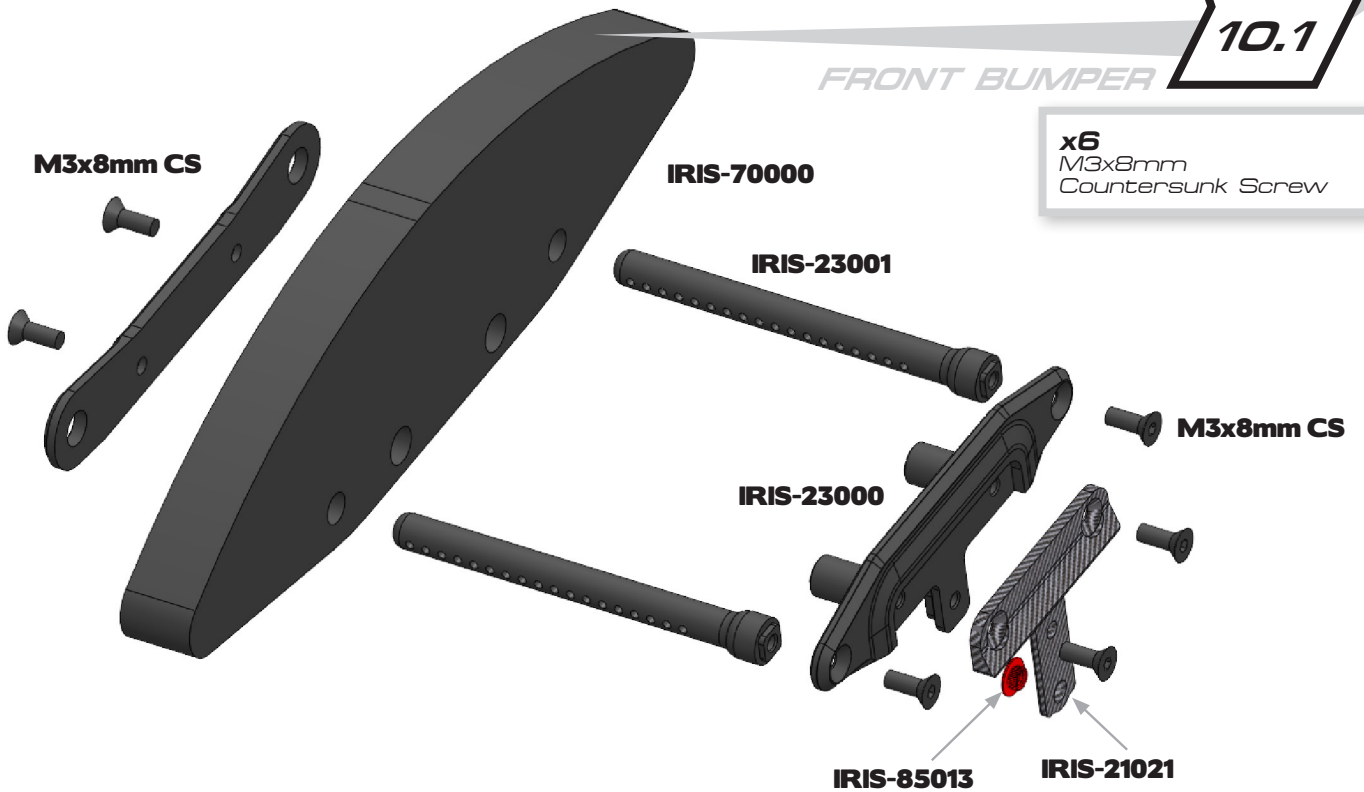
9.6

MOUNTING OF REAR LINKS



10.1

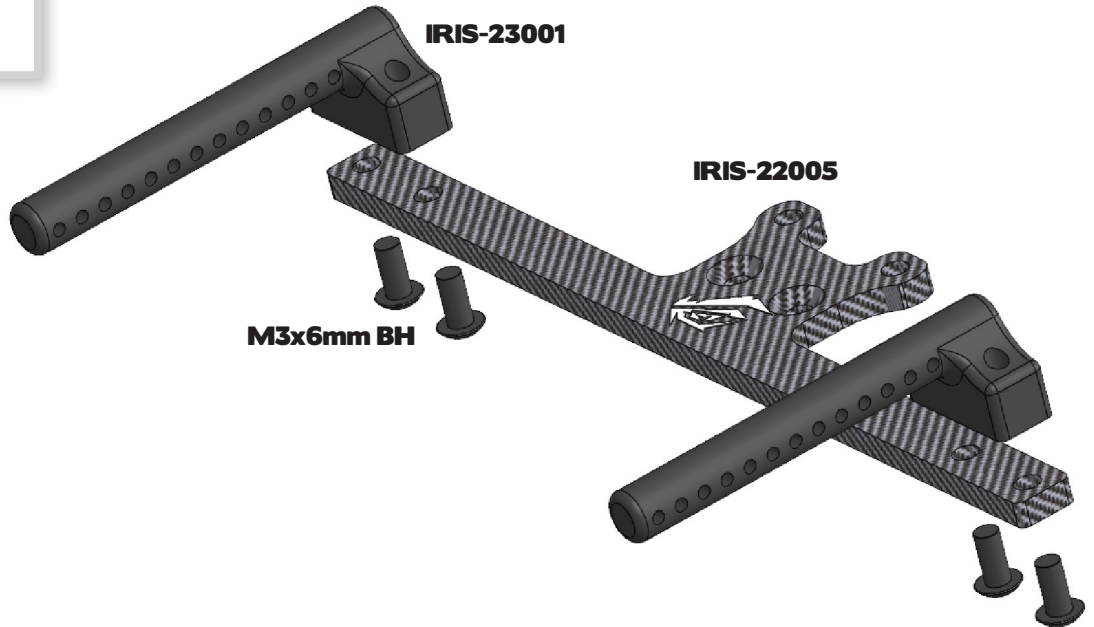
FRONT BUMPER



10.2

REAR BODY MOUNT

x4
M3x6mm
Button Head Screw



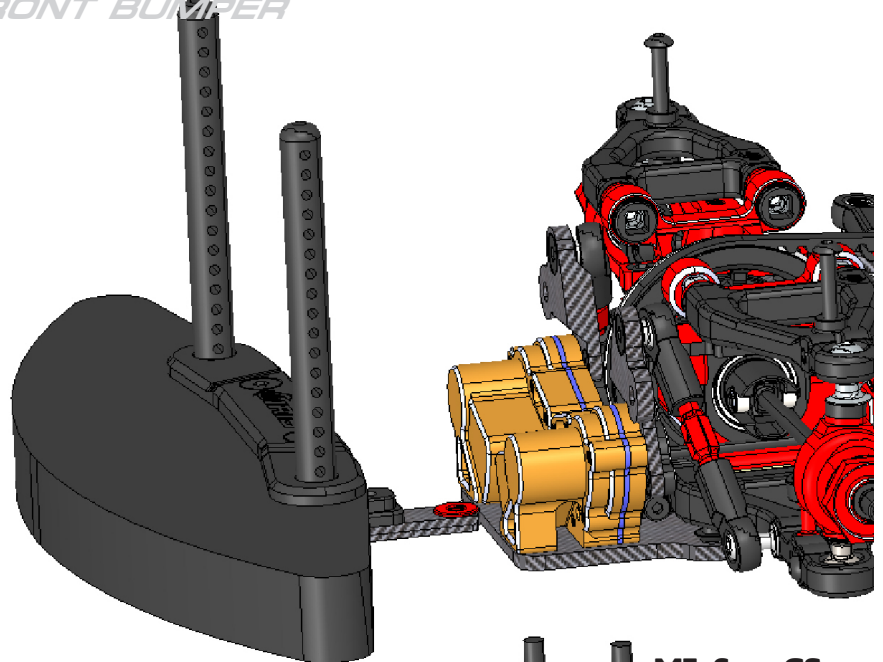
10.3

MOUNTING THE FRONT BUMPER

x1
M3x6mm
Countersunk Screw

x1
M3x8mm
Countersunk Screw

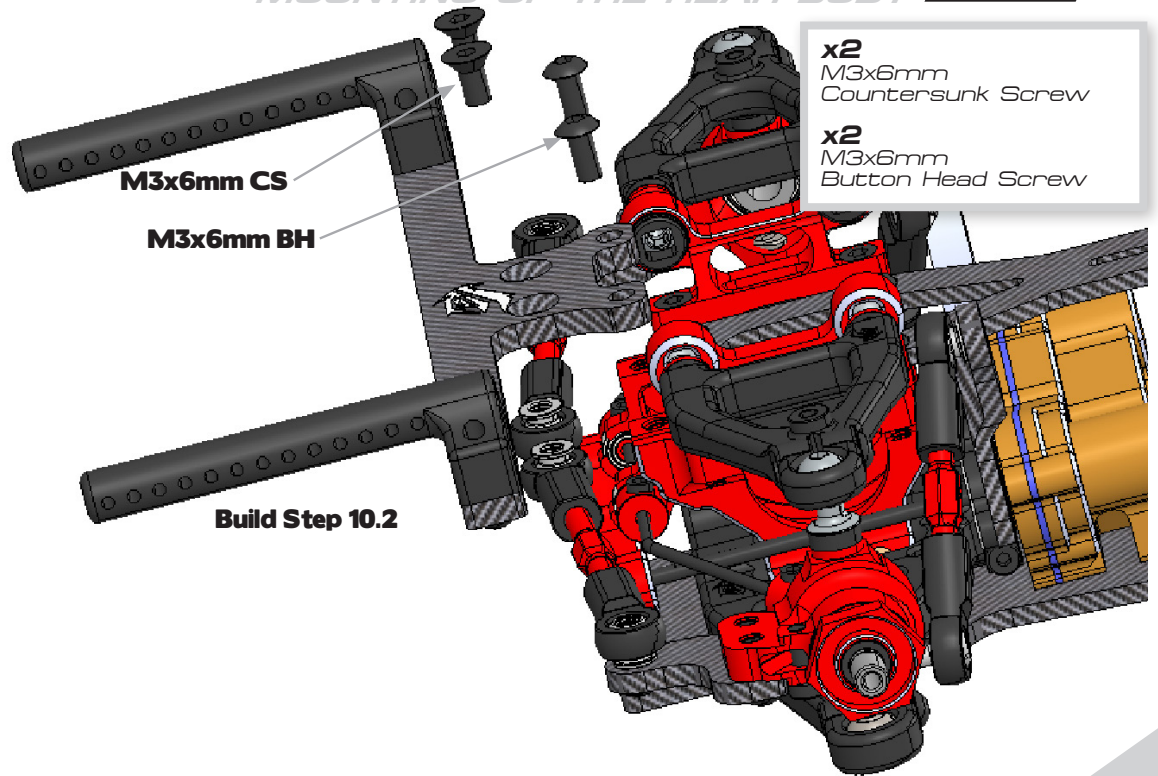
Build Step 10.1



M3x8mm CS
M3x6mm CS

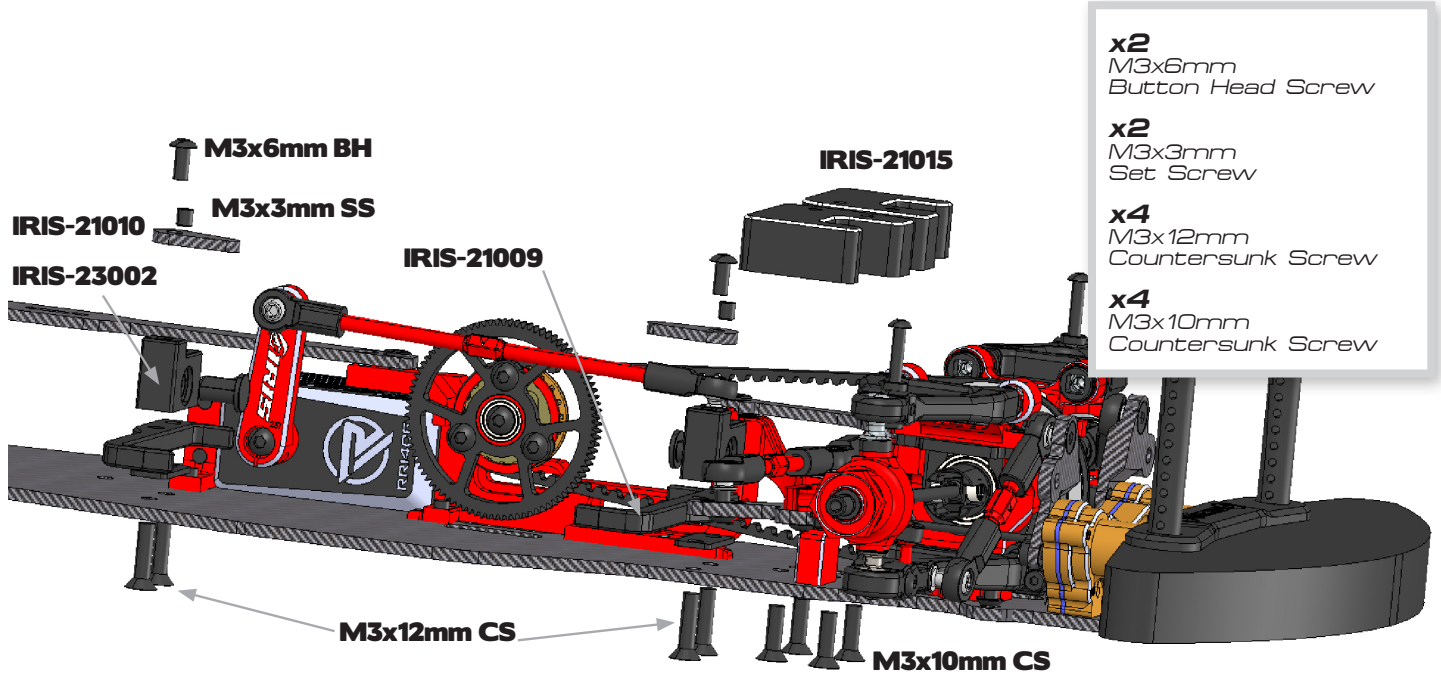
10.4

MOUNTING OF THE REAR BODY



10.5

INSTALL BATTERY MOUNT AND WEIGHTS



IRIS

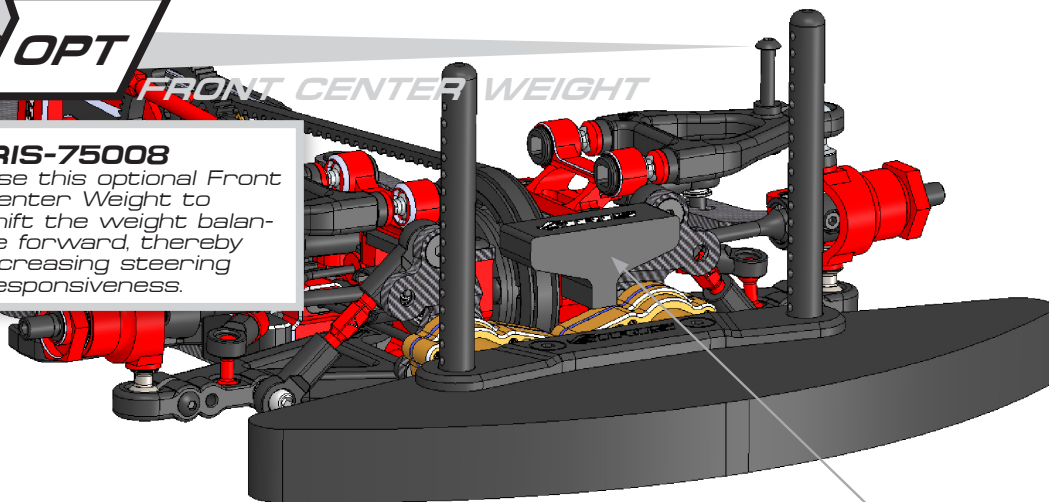
OPTION PARTS

OPT

FRONT CENTER WEIGHT

IRIS-75008

Use this optional Front Center Weight to shift the weight balance forward, thereby increasing steering responsiveness.



M3x12mm CS

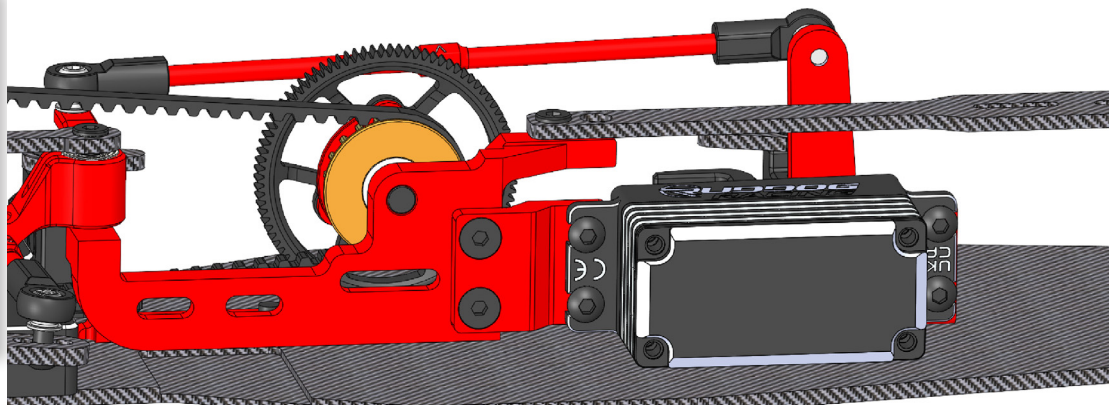
IRIS-75008

OPT

+15MM SERVO MOUNT SET

IRIS-75006

This set repositions the servo 15mm further back, allowing you to mount a large speed controller, such as the Hobbywing Xerun XR10 Justock, directly behind the motor. Depending on the size and weight of the battery used, this adjustment can improve the weight balance of the ONE.05 FWD.

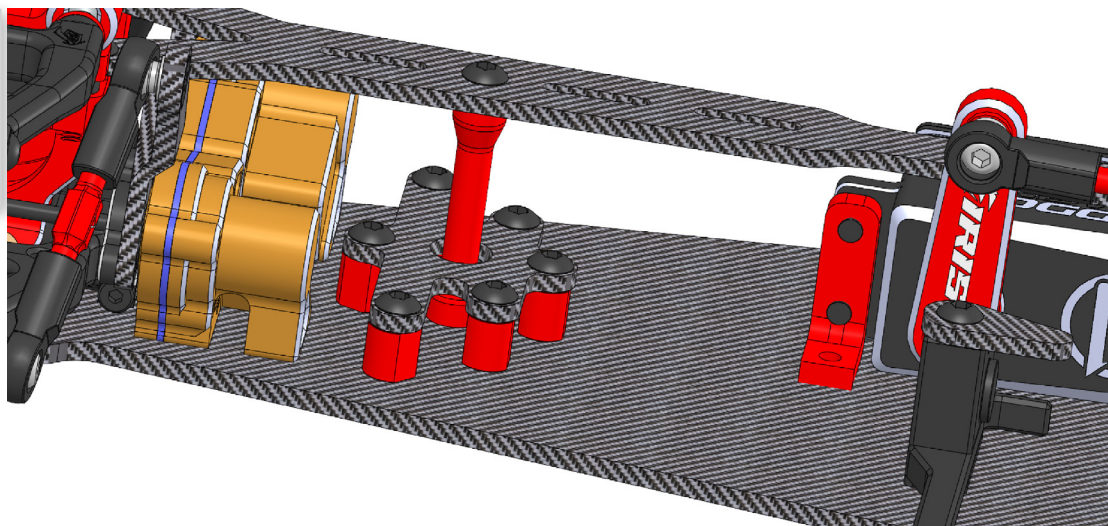


OPT

REAR CHASSIS STIFFENER SET

IRIS-22008

The Rear Chassis Stiffener reduces the overall flex of the chassis. This optional part is recommended for use on high-grip tracks.



OPT

ALUMINIUM DIFFERENTIAL COVER

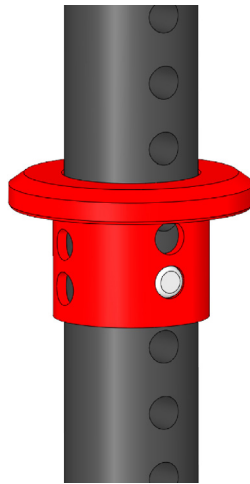


IRIS-32010

The Aluminum Differential Cover not only adds aesthetic appeal, but it also enhances the sealing and consistency of your differential.

OPT

BODY POST HEIGHT ADJUSTMENT

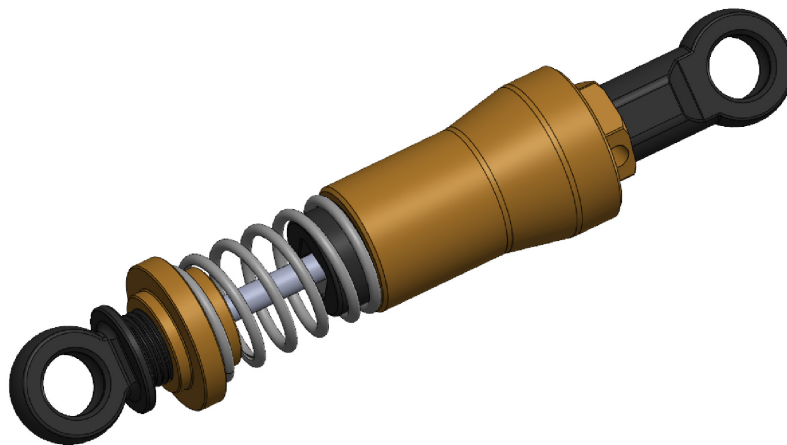


IRIS-75000

The Body Post Height Adjustment Set enables you to easily modify the body height while also enhancing the appearance of your car.

OPT

HEAVE SHOCK SET



IRIS-50027

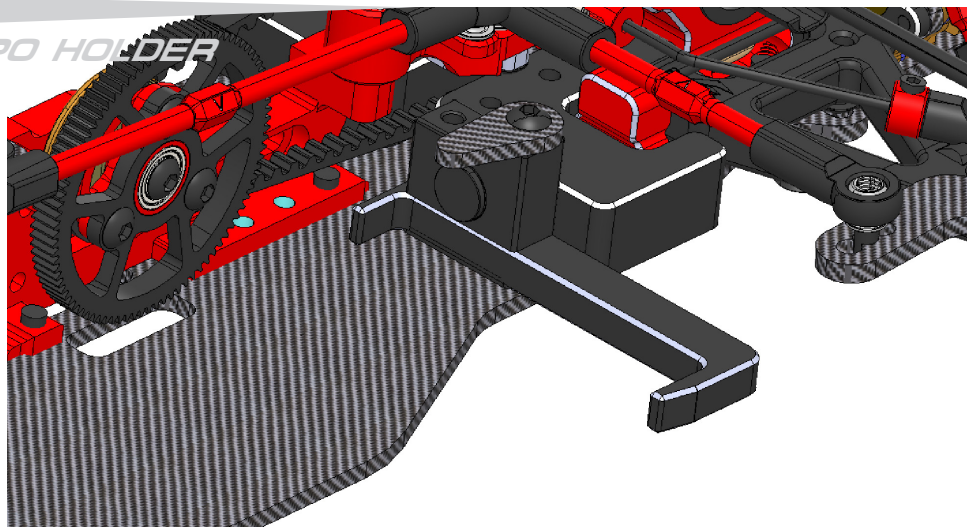
The front heave shock is particularly recommended for FWD vehicles with a forward weight bias, especially on medium to large tracks.

OPT

STEEL LIPO HOLDER

IRIS-75005

The Steel Lipo Holder allows you to add extra weight to the front of the car, shifting the weight bias further forward.

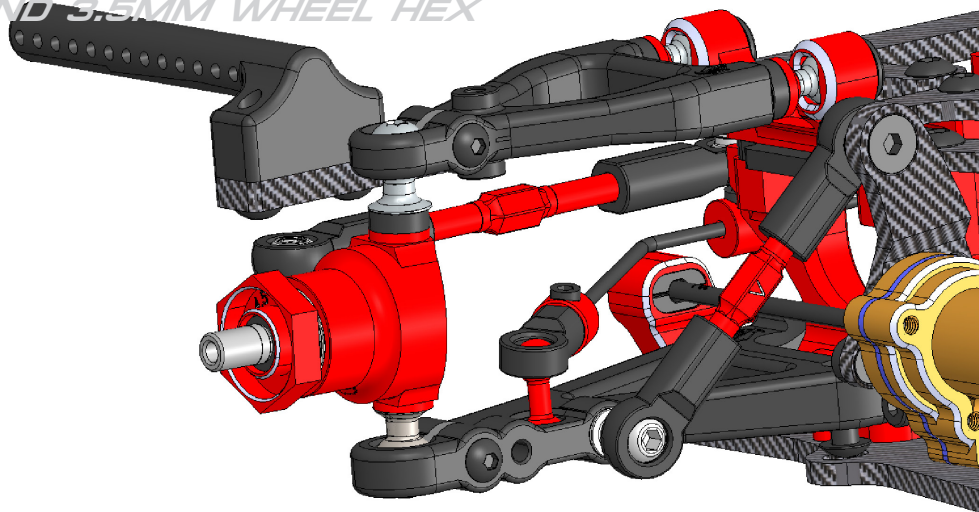


OPT

4.5MM AND 3.5MM WHEEL HEX

IRIS-30013 IRIS-30014

The 3.5mm and 4.5mm Wheel Hexes for the Iris One allow you to easily adjust the track width according to your needs. These changes have a significant impact on how your car behaves during corner entry and exit.

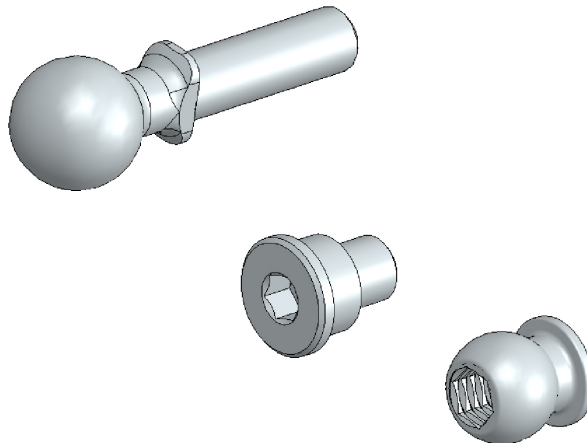


OPT

TITANIUM BALLSTUDS AND SCREWS

IRIS-84006- IRIS-84011

An easy way to reduce the weight of your Iris ONE is by using our line of titanium ball studs and screws, specifically designed for the Iris ONE.



GEAR UP, SPEED UP:

CHOOSE RUDDOG FOR YOUR IRIS ONE.05.



1/10 TOURING TIRE HEATING SYSTEM



HD LIPO CHARGING BAG



RSS65 SOLDERING STATION 65W



CAR BAG - 1/10 TOURING CAR



ONROAD ALUMINIUM CAR STAND



SMALL RACING BAG



www.iris-racing.com



RUDDOG
Distribution GmbH
Sägewerkstr. 16
83416 Saaldorf-Surheim
GERMANY

Email: support@ruddog.eu
Tel: +49 8654 5894818

