



IRIS

.05

IRIS ONE.**.05** COMPETITON TOURING CAR KIT

#RACEIRIS

Thank you for choosing the IRIS ONE.05 Touring Car,

the latest embodiment of Ruddog's commitment to excellence in on-road racing.

With the original launch of IRIS ONE, we embarked on a groundbreaking journey, reshaping the high-end on-road racing cars. Now, after an exhilarating 10-month run and close collaboration with our devoted customers and team drivers, we are thrilled to present the IRIS ONE.05, a evolution in our series.

The IRIS ONE.05 builds upon the legacy of its predecessor, refining and introducing improvements that make a real difference on track. These include:

- *Chassis Pin Locators in Bulkheads, Motor Mount, and Damper Cases for precise alignment*
- *Lightweight Lower and Upper Bulkheads, Motor Mount, Damper Cases for better agility*
- *A total weight saving of over 25grams*
- *Improved Chassis Flex for optimal performance*
- *Improved Drivetrain durability for consistent reliability*
- *Refined Pushrod geometry for improved handling and increased corner speed*
- *New differential and shock sealing for precision control*

This innovative leap is more than just a set of improvements; it's our renewed promise to stay ahead, to challenge the norm, and to contribute to the racing scene with unique solutions. Our vision, guided by designer Andreas Myrberg, continues to lead us down untrodden paths, pursuing excellence with each new creation.

With the IRIS ONE.05, you're not just acquiring a state-of-the-art racing machine; you're joining our relentless pursuit of perfection. This is our commitment to you - to provide unparalleled support, to create meaningful content, to devise practical tuning options, and to bring absolute value to your racing experience.

We aim high, embracing the risks that come with innovation, all to offer you the best possible product. Your trust in us fuels our passion, and we genuinely thank you for being part of this next exciting chapter with IRIS. Thank you very much.

We hope you'll enjoy the IRIS ONE.05, a testament to our never-ending quest for something great over time.

PDF Manual:



Setup Sheets:



Videos:



GEAR UP WITH RUDDOG:

THE ESSENTIAL TOOLS FOR YOUR IRIS ONE.05.



CURVED SCISSORS

MICRO PLIERS

STRAIGHT SCISSORS

7.0MM NUT DRIVER WRENCH

5.5MM NUT DRIVER WRENCH

2.5MM HEX DRIVER WRENCH

2.0MM HEX DRIVER WRENCH

1.5MM HEX DRIVER WRENCH

TWEEZERS

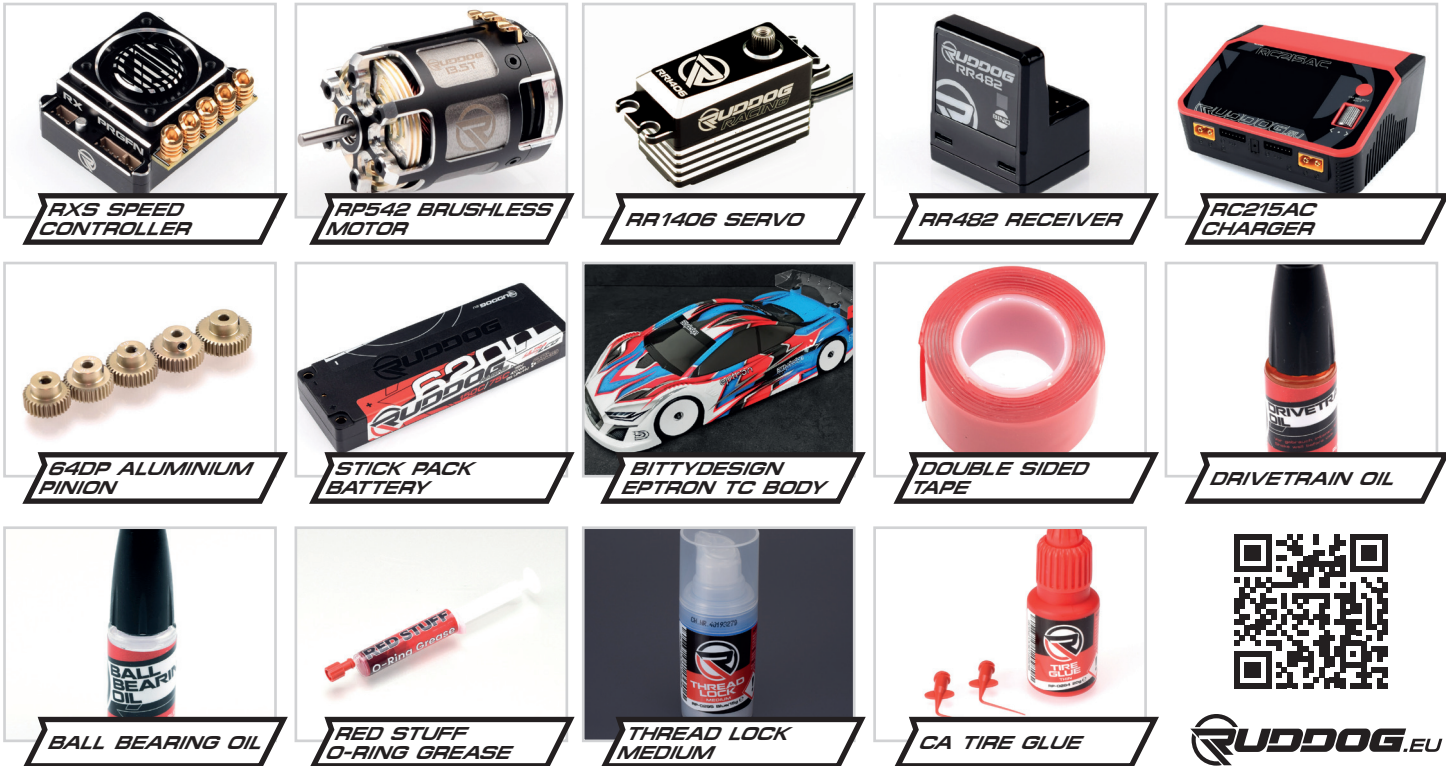
HOBBY KNIFE

CLEANING BRUSH

BODY REAMER

RACE AHEAD WITH RUDDOG:

ESSENTIAL RACING EQUIPMENT FOR YOUR IRIS ONE.05.



RXS SPEED CONTROLLER

RP542 BRUSHLESS MOTOR

RR1406 SERVO

RR482 RECEIVER

RC215AC CHARGER

64DP ALUMINIUM PINION

STICK PACK BATTERY

BITTYDESIGN EPTRON TC BODY

DOUBLE SIDED TAPE

DRIVETRAIN OIL

BALL BEARING OIL

RED STUFF O-RING GREASE

THREAD LOCK MEDIUM

CA TIRE GLUE



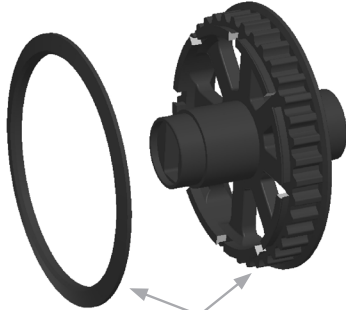
RUDDOG.EU

1.1

SPOOL

M3x8mm CS

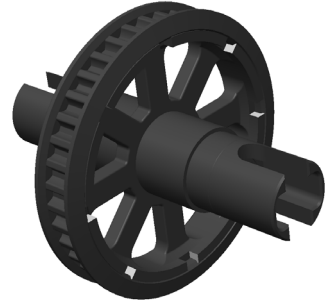
x2
M3x8mm
Countersunk Screw



IRIS-32005

IRIS-32002

M3x8mm CS



Please note
direction.
Steep angle
inside

1.2

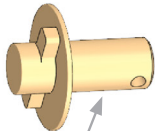
DIFFERENTIAL

Lubricate using
RUDDOG Red Stuff
Grease or similar.

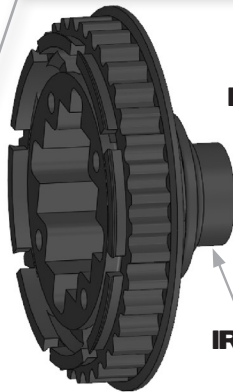
IRIS-32004



IRIS-32000



IRIS-32011



IRIS-32006

IRIS-83000



IRIS-32008



IRIS-32001

1.2

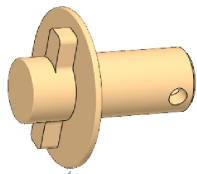
DIFFERENTIAL

Lubricate using
RUDDOG Red Stuff
Grease or similar.

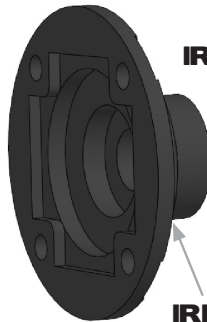
IRIS-32004



IRIS-32000



IRIS-32011



IRIS-32006

IRIS-83000



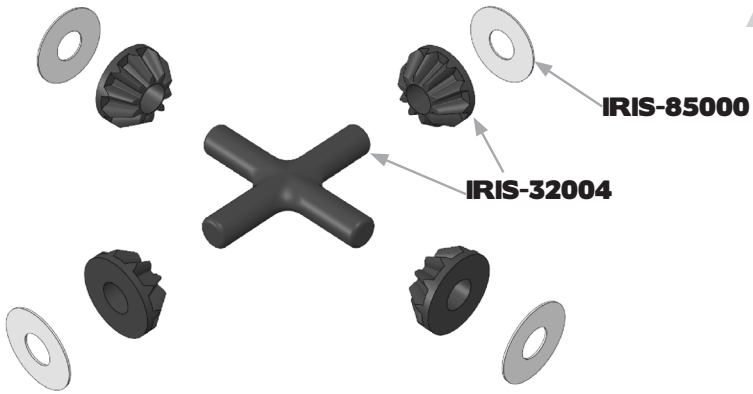
IRIS-32008



IRIS-32001

1.2

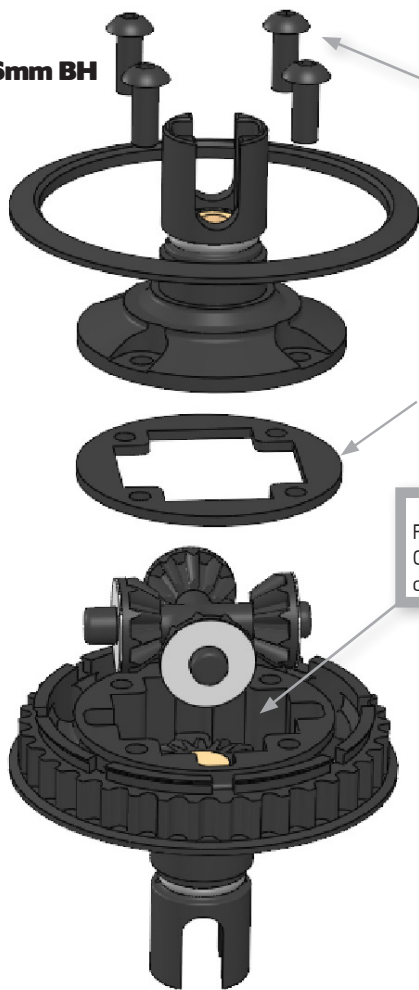
DIFFERENTIAL



1.2

DIFFERENTIAL

M2.5x6mm BH



Do not overtighten.

x4
M2.5x6mm
Button Head Screw

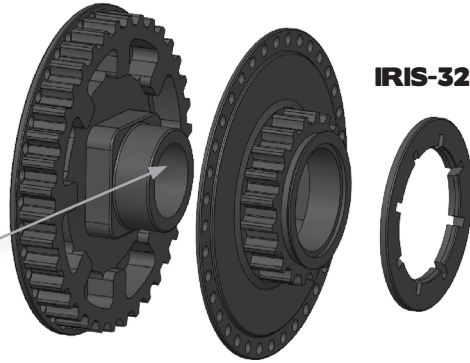
Fill with 1.0g of Silicone Oil. We recommend 7k cst as starting point.

1.3

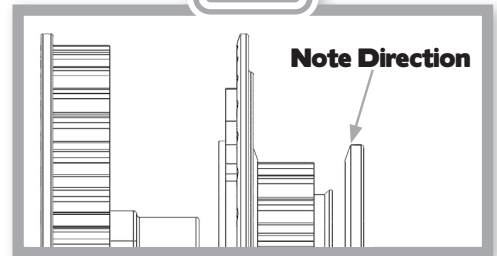
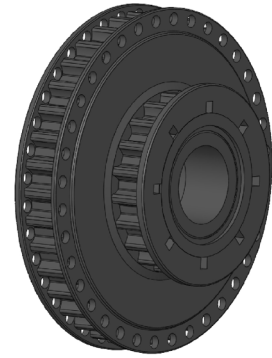
FRONT MIDDLE GEAR



Front version has a round shape.



IRIS-32007

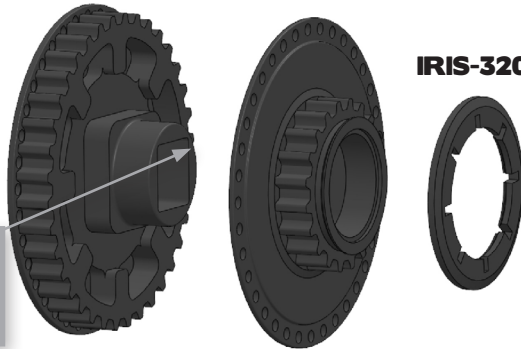


1.4

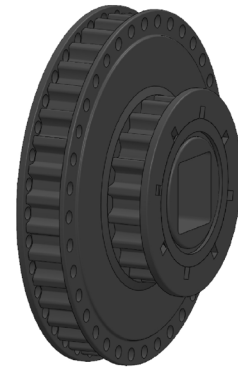
REAR MIDDLE GEAR



Rear version has a square shape.

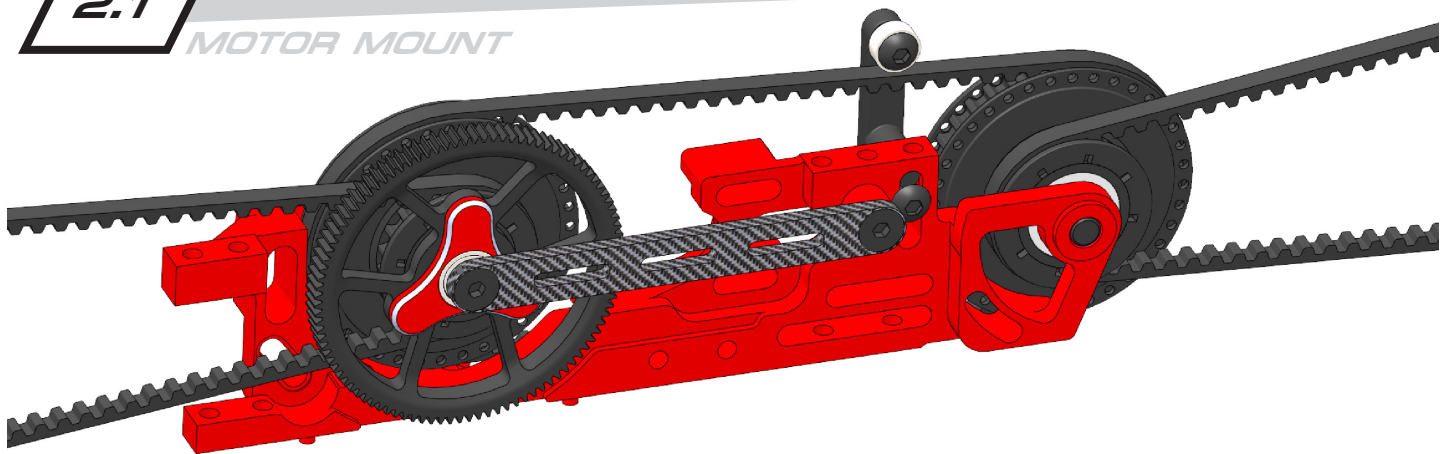


IRIS-32007



2.1

MOTOR MOUNT



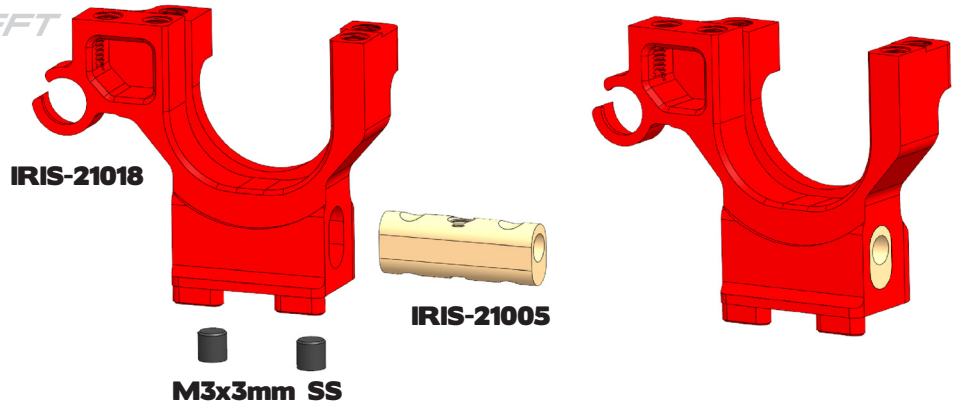
2.2

BULKHEAD LEFT

x4
M3x3mm
Set Screw



Build this step twice !



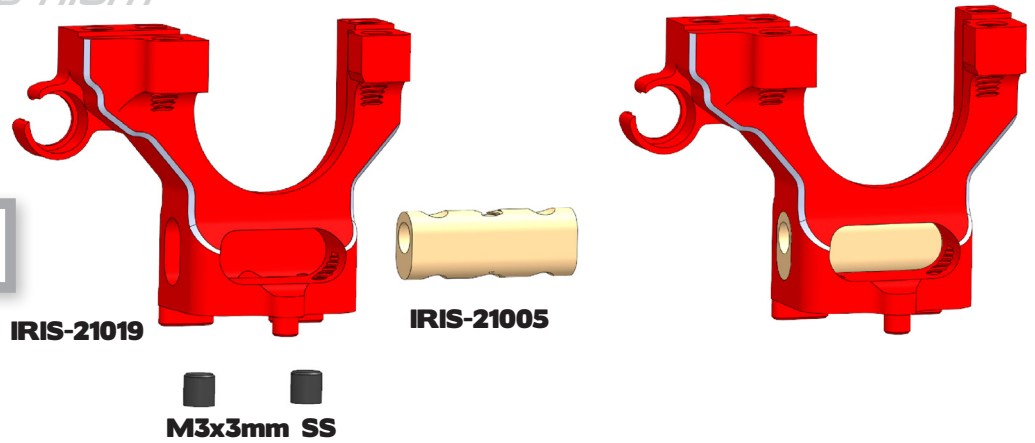
2.3

BULKHEAD RIGHT

x4
M3x3mm
Set Screw

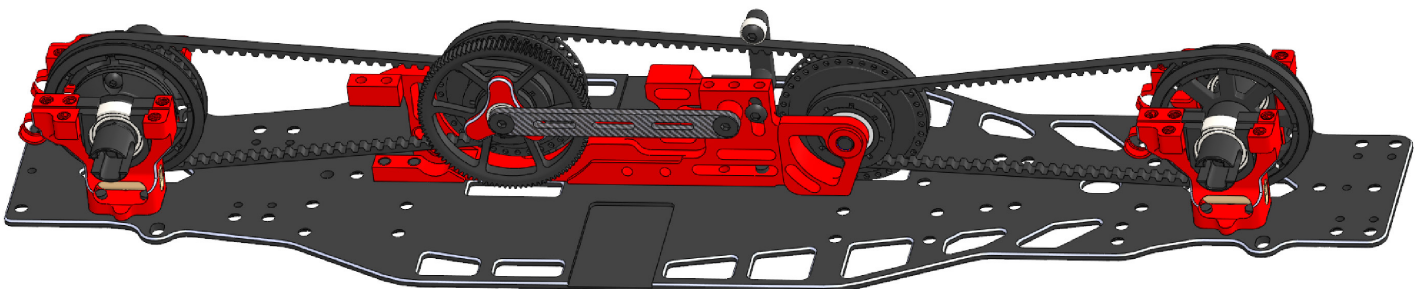


Build this step twice !



3.1

CHASSIS





Start with #1 inserts with the number facing the direction of the motor / center of the chassis to get the correct belt tension.

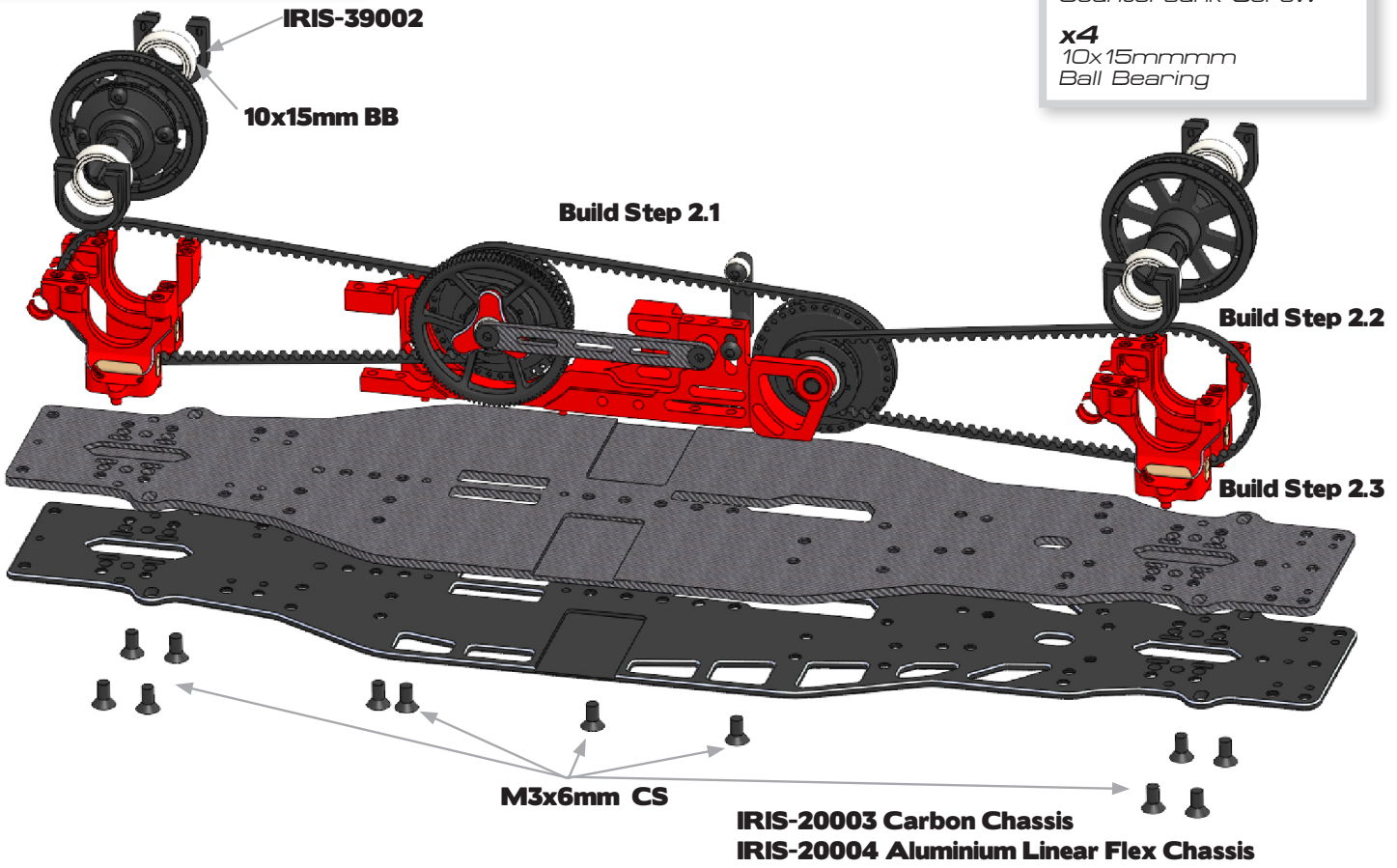


Internal drive ratio is 1.9

3.1

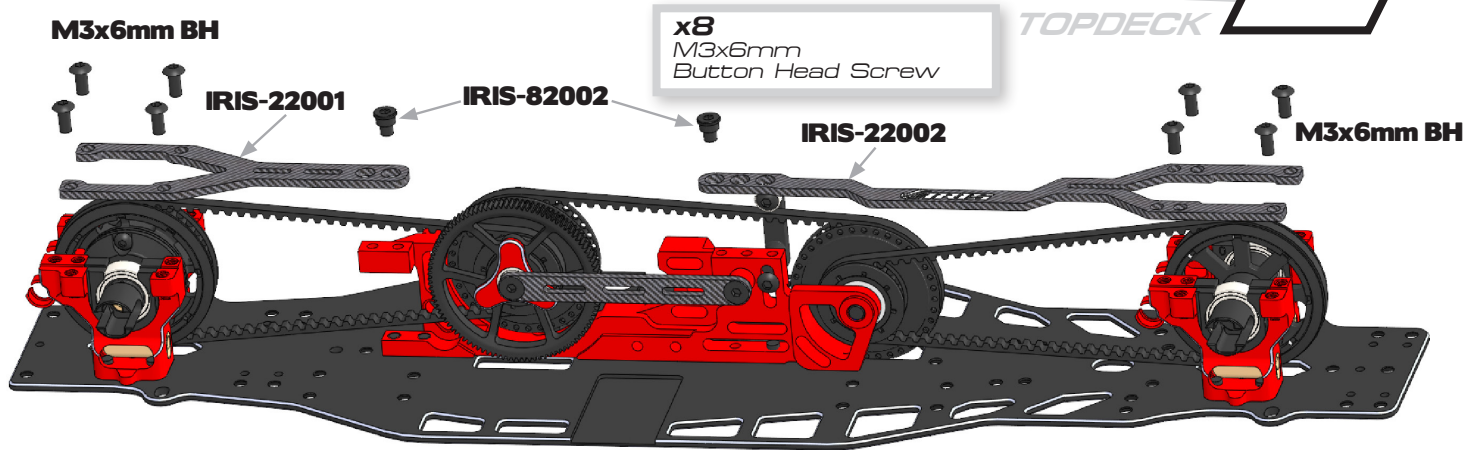
CHASSIS

- x12**
M3x6mm
Countersunk Screw
- x4**
10x15mmmm
Ball Bearing



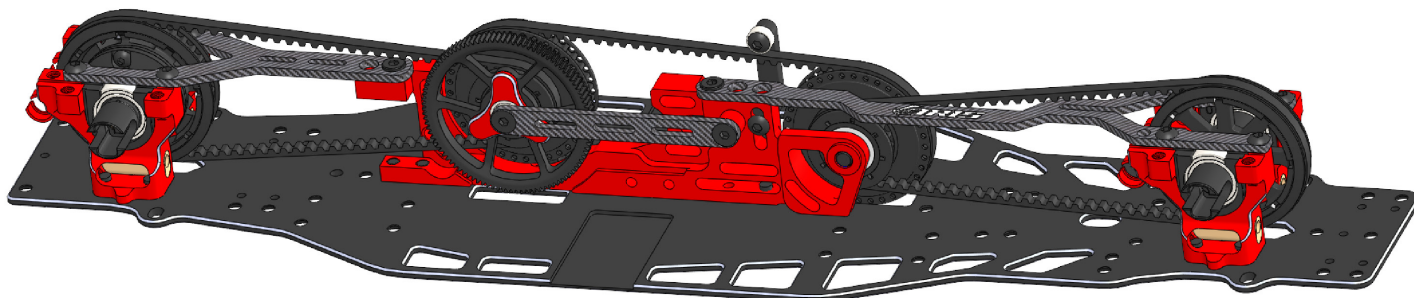
3.2

TOPDECK



3.2

TOPDECK MOUNTED

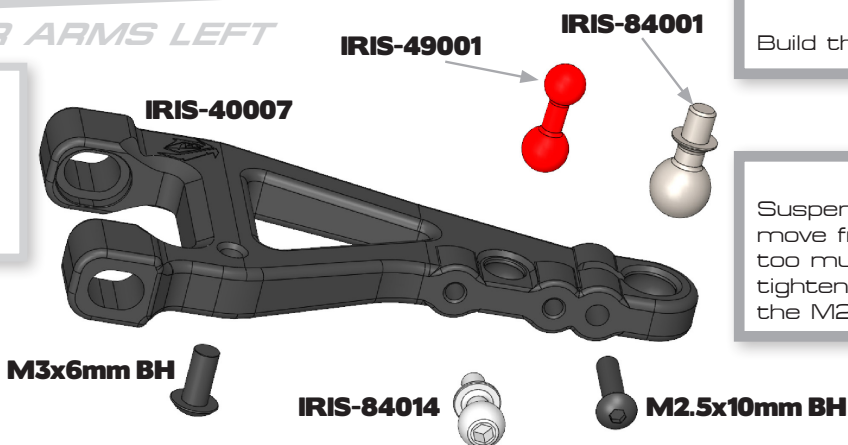


4.1


LOWER ARMS LEFT

x2
M2.5x10mm
Button Head Screw

x2
M3x6mm
Button Head Screw

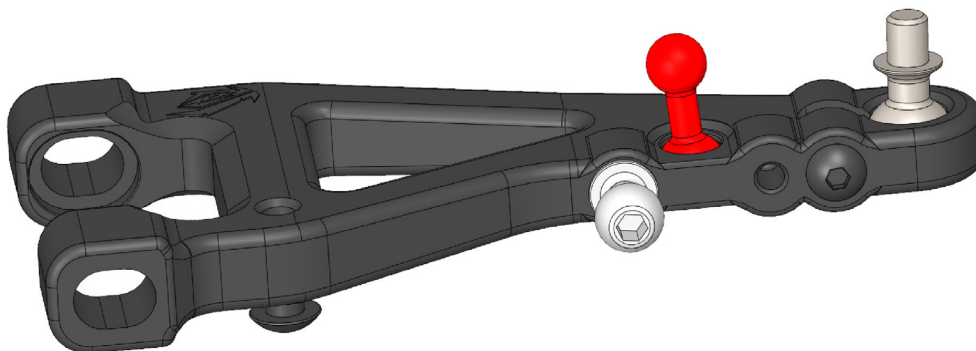



Build this step twice !


Suspension balls should move freely, yet have not too much play. Adjust by tightening or loosening the M2.5x10mm screw.

4.1

LOWER ARMS LEFT



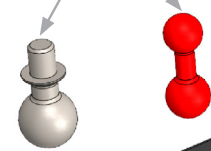


Build this step twice !



Suspension balls should move freely, yet have not too much play. Adjust by tightening or loosening the M2.5x10mm screw.

IRIS-49001
IRIS-84001



LOWER ARMS RIGHT

4.1

x2
M2.5x10mm
Button Head Screw

x2
M3x6mm
Button Head Screw

M2.5x10mm BH

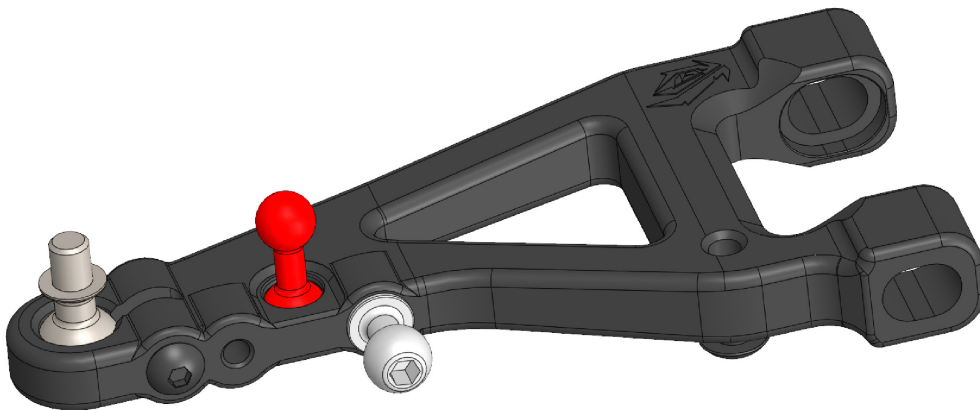


IRIS-84014

M3x6mm BH

4.1

LOWER ARMS RIGHT



4.2

FRONT LEFT UPPER ARM

IRIS-41003

IRIS-84004

M2.5x14mm BH

M2.5x10mm BH

x1
M2.5x10mm
Button Head Screw

x1
M2.5x14mm
Button Head Screw

Use the included wrench to mount the adjustment nuts (wrench is on the battery mount injection mold).

IRIS-85001

2mm Plastic Washer

IRIS-21017

IRIS-40007

IRIS-84000

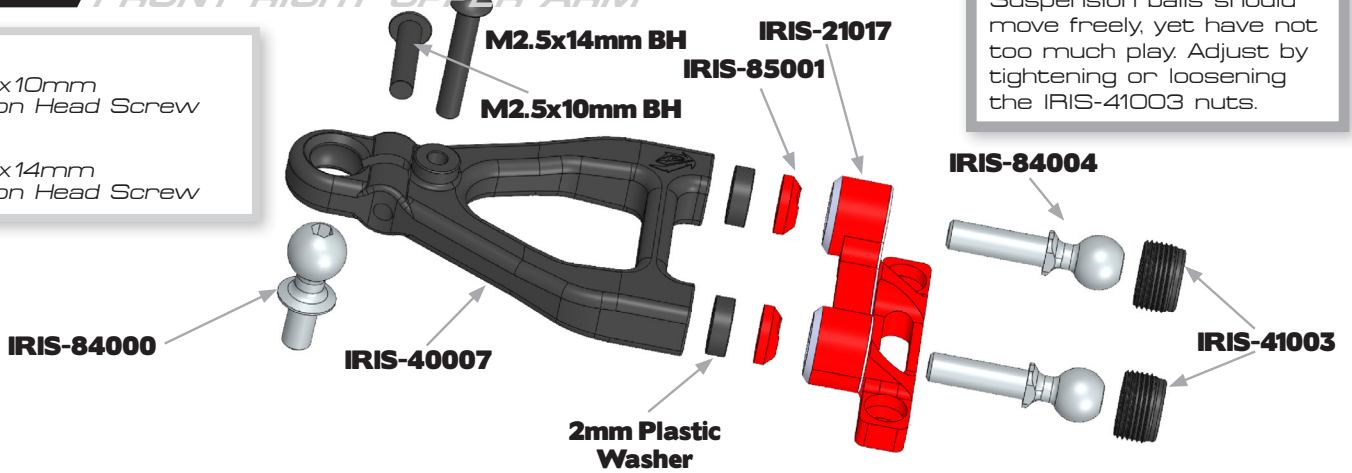
Suspension balls should move freely, yet have not too much play. Adjust by tightening or loosening the IRIS-41003 nuts.

4.2

FRONT RIGHT UPPER ARM

x1
M2.5x10mm
Button Head Screw

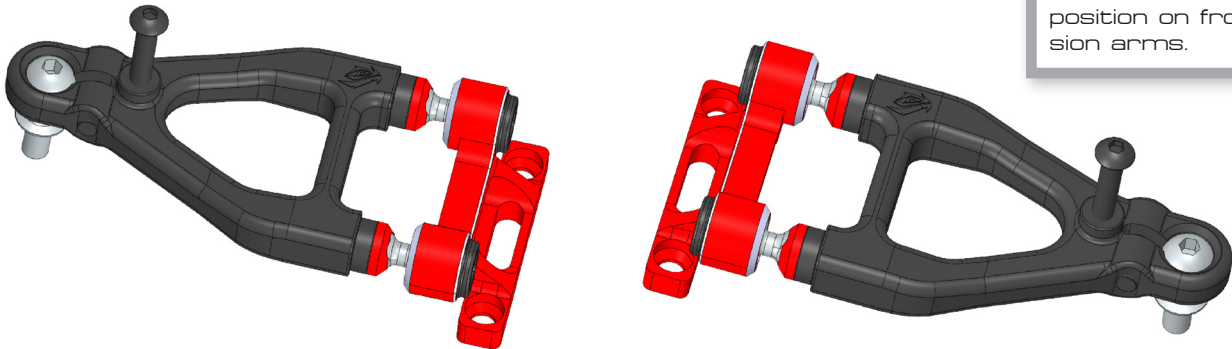
x1
M2.5x14mm
Button Head Screw



Suspension balls should move freely, yet have not too much play. Adjust by tightening or loosening the IRIS-41003 nuts.

4.2

FRONT UPPER ARMS ASSEMBLED



IRIS icon always in rear position on front suspension arms.

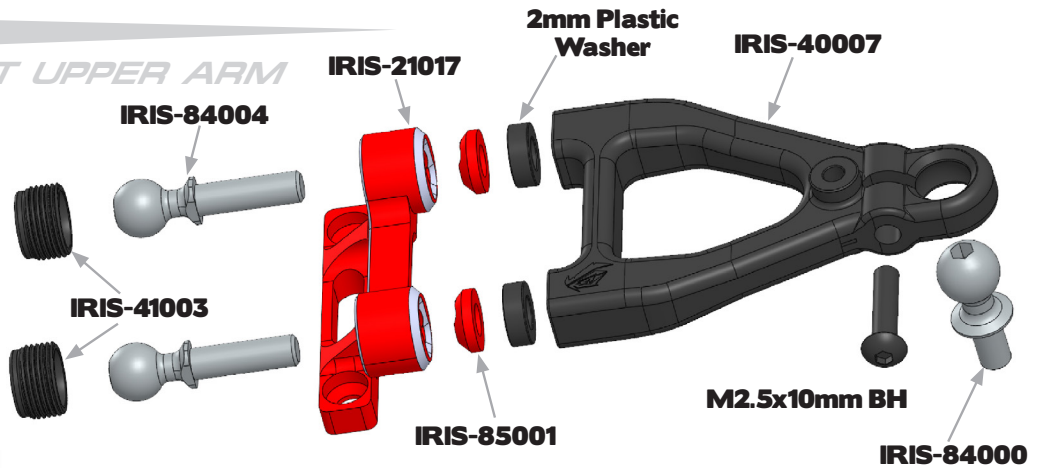
4.3

REAR LEFT UPPER ARM

x1
M2.5x10mm
Button Head Screw




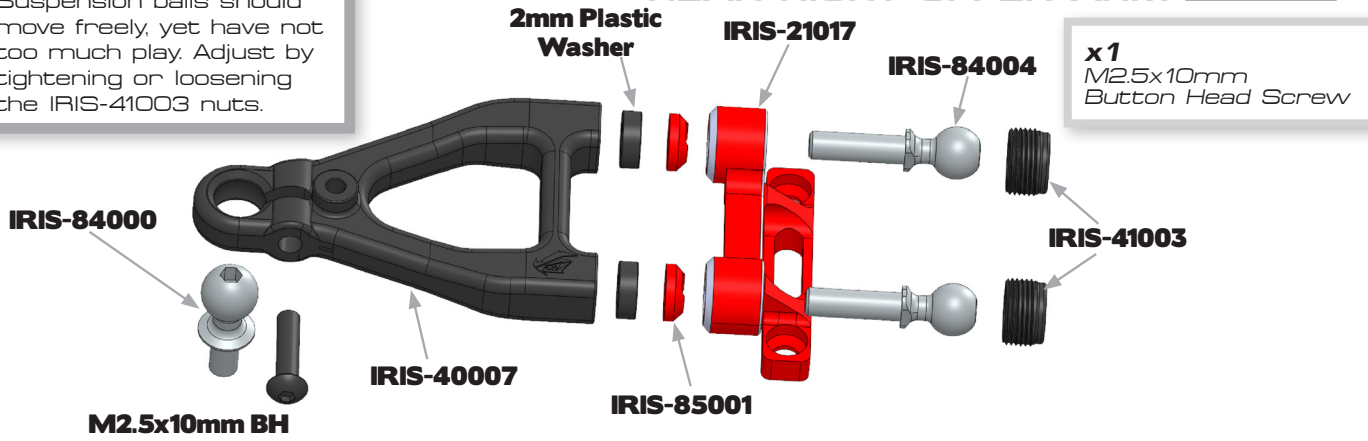
Suspension balls should move freely, yet have not too much play. Adjust by tightening or loosening the IRIS-41003 nuts.



4.3

REAR RIGHT UPPER ARM

 Suspension balls should move freely, yet have not too much play. Adjust by tightening or loosening the IRIS-41003 nuts.

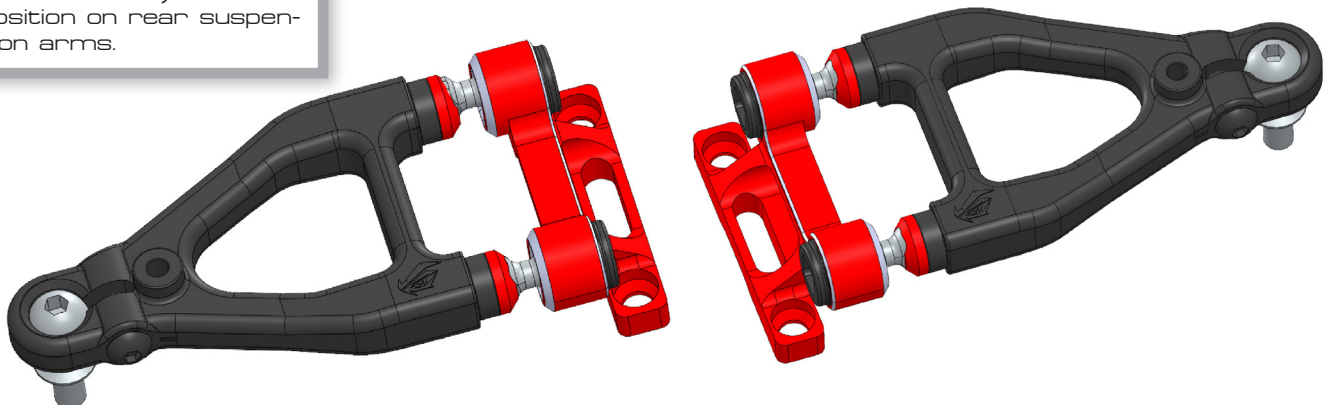


x1
M2.5x10mm
Button Head Screw

4.3

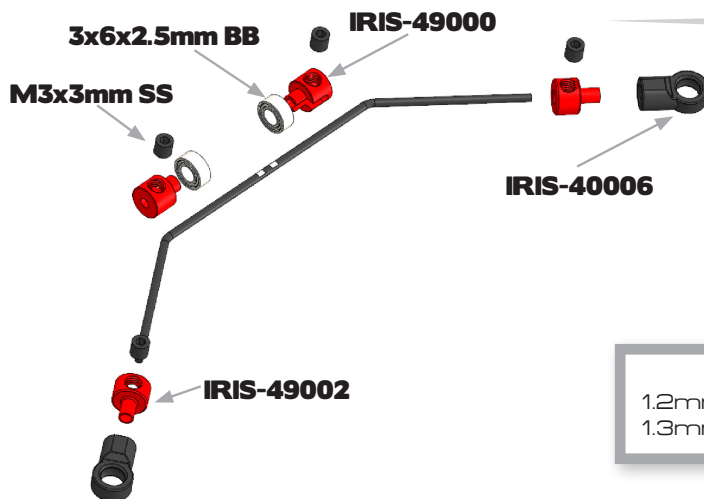
REAR UPPER ARMS ASSEMBLED

 IRIS icon always in front position on rear suspension arms.




4.4

ANTI-ROLL BAR



x8
M3x3mm
Set Screw

x4
3x6x2.5mm
Ball Bearing

 1.2mm front anti-roll bar
1.3mm rear anti-roll bar

 Build this step twice !

4.5

MOUNTING OF FRONT LOWER

x2
M3x3mm
Set Screw

Build Step 4.1

IRIS-41000

IRIS-40007

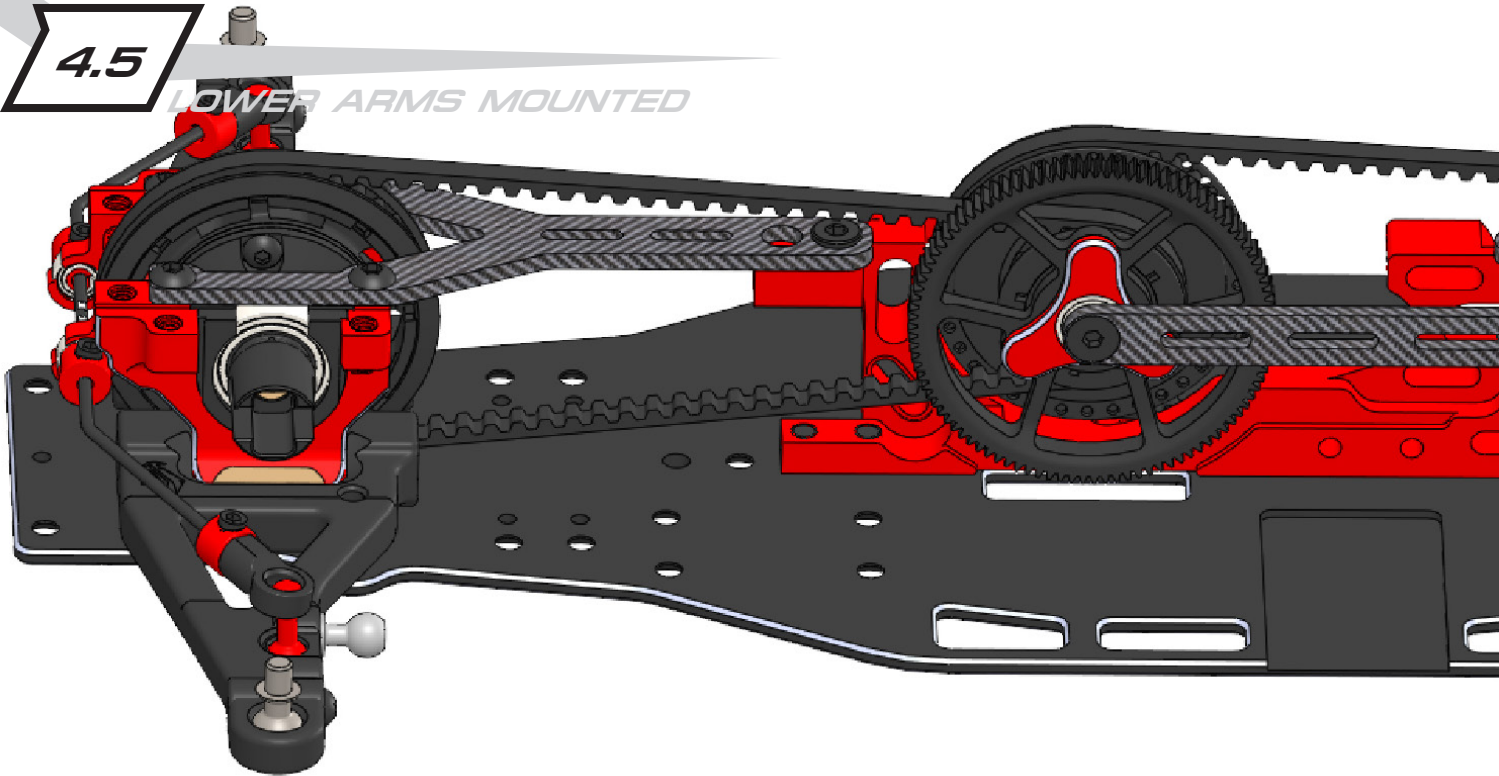
M3x3mm SS



Use a 3.0mm arm reamer to increase the insert hole size until the hinge pin moves freely.

4.5

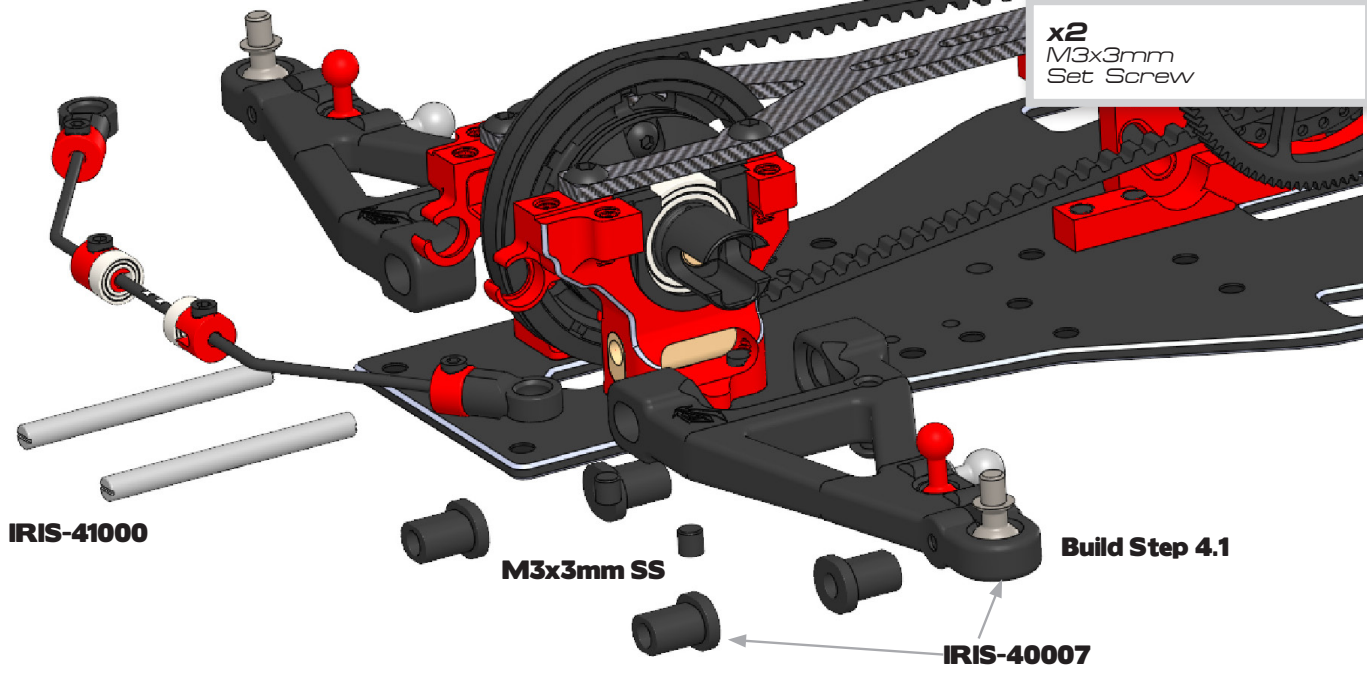
LOWER ARMS MOUNTED



4.5

MOUNTING OF REAR LOWER ARMS

x2
M3x3mm
Set Screw

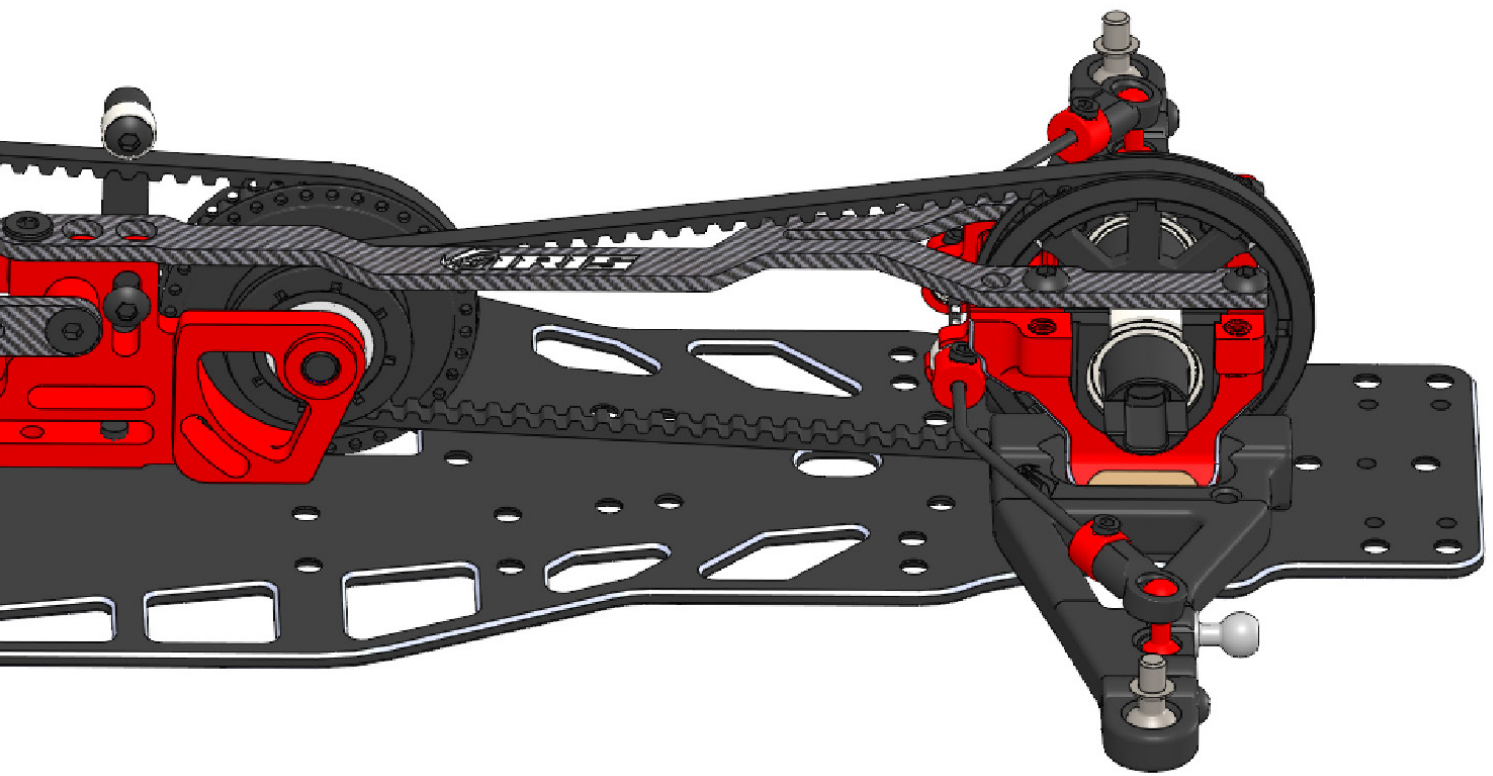


IRIS-41000

M3x3mm SS

IRIS-40007

Build Step 4.1



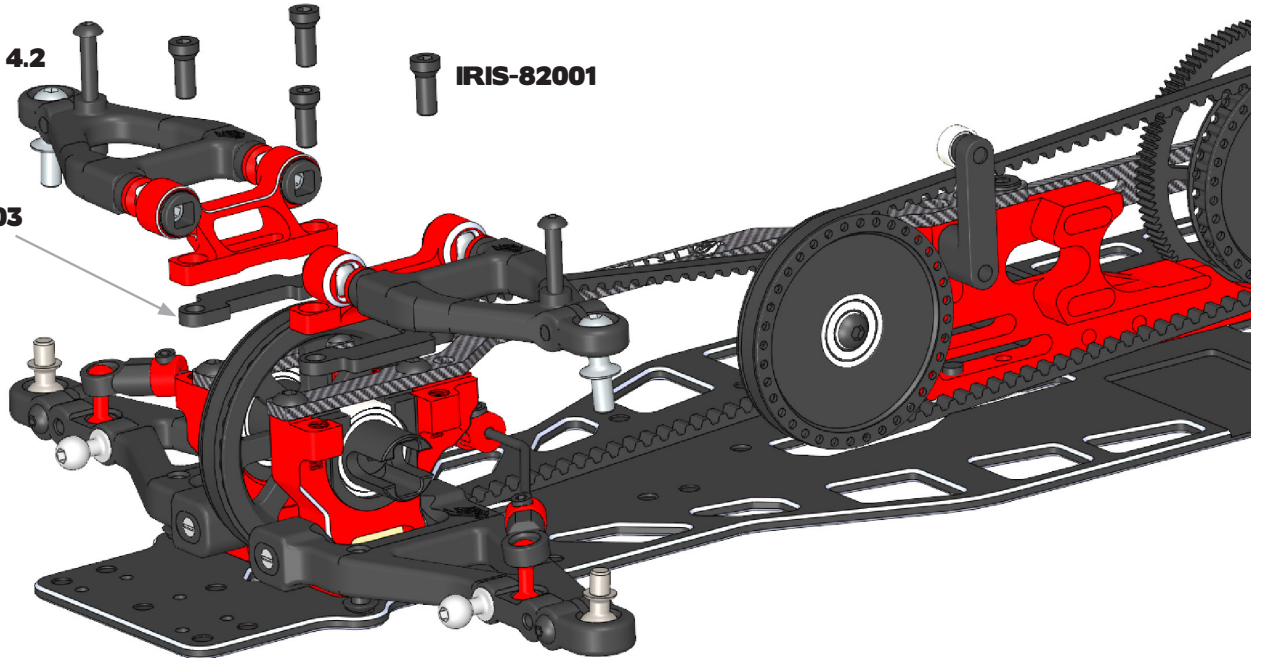
4.6

MOUNTING OF FRONT UPPER ARMS

Build Step 4.2

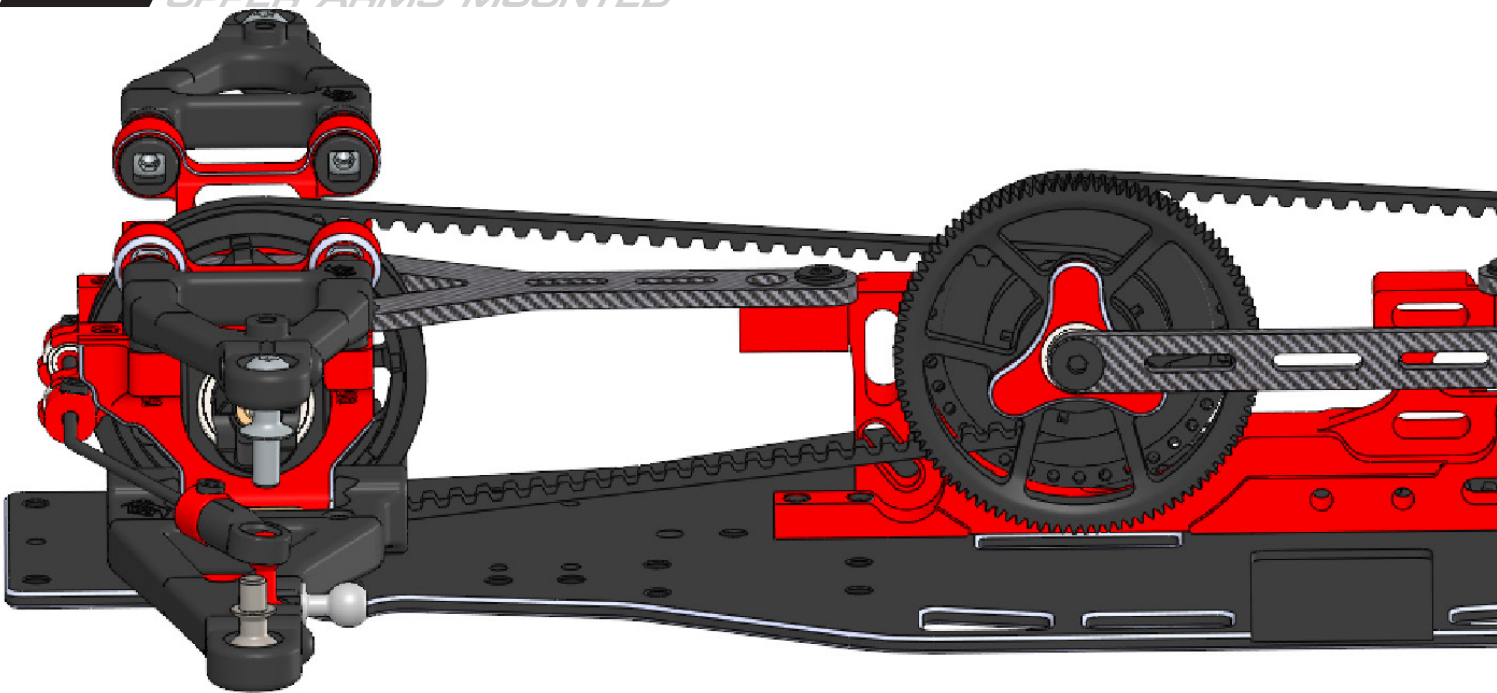
IRIS-23003
2mm

IRIS-82001



4.6

UPPER ARMS MOUNTED



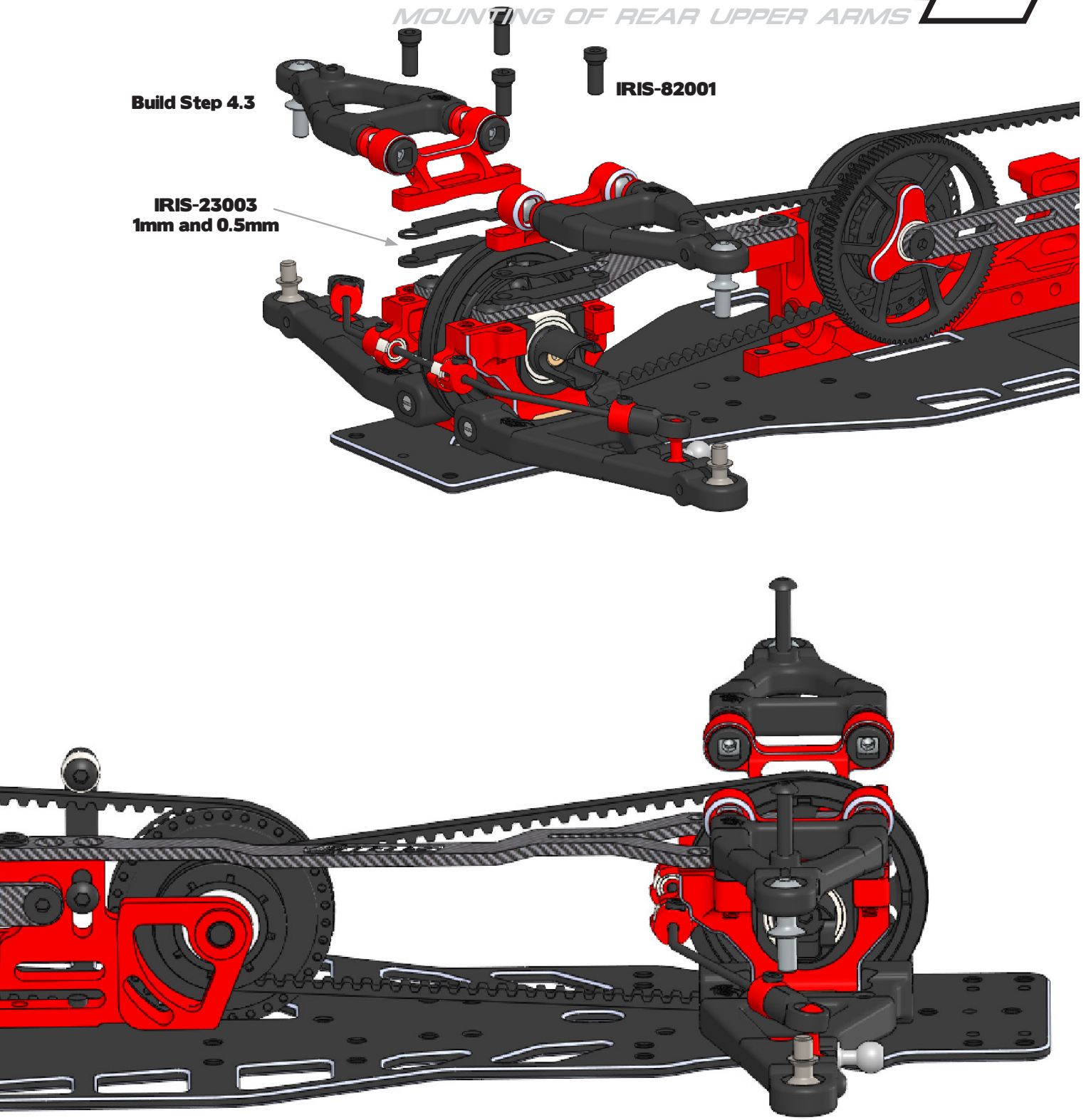
4.6

MOUNTING OF REAR UPPER ARMS

Build Step 4.3

IRIS-23003
1mm and 0.5mm

IRIS-82001



5.1

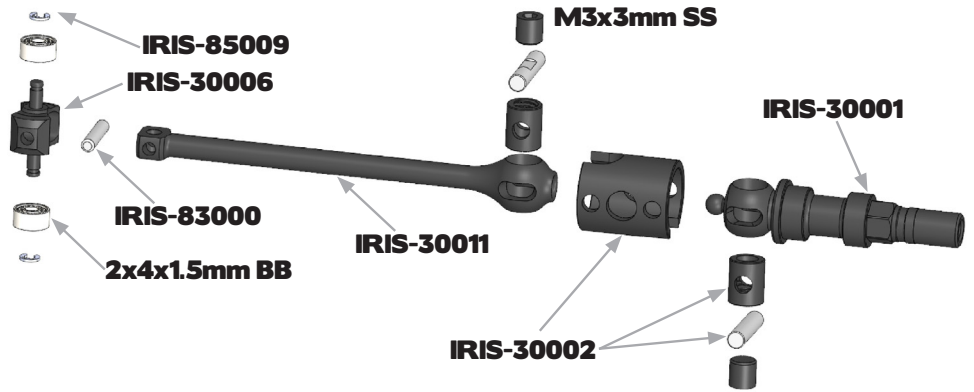
FRONT DRIVESHAFT

x2
M3x3mm
Set Screw

x2
2x4x1.5mm
Ball Bearing



Build this step twice !

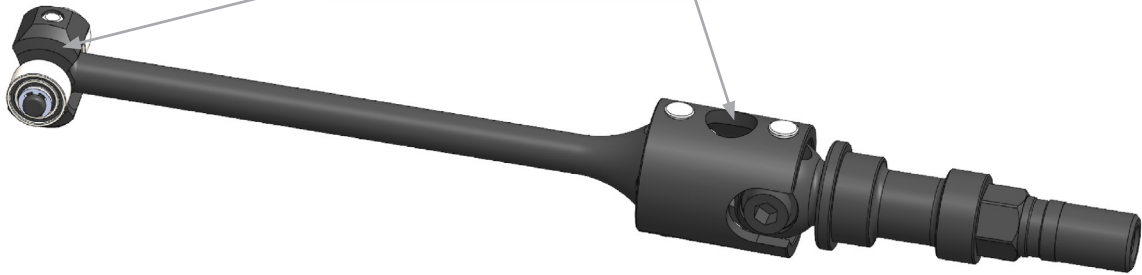


5.1

FRONT DRIVESHAFT



Lubricate using RP-0494
RUDDOG Drivetrain Oil



5.2

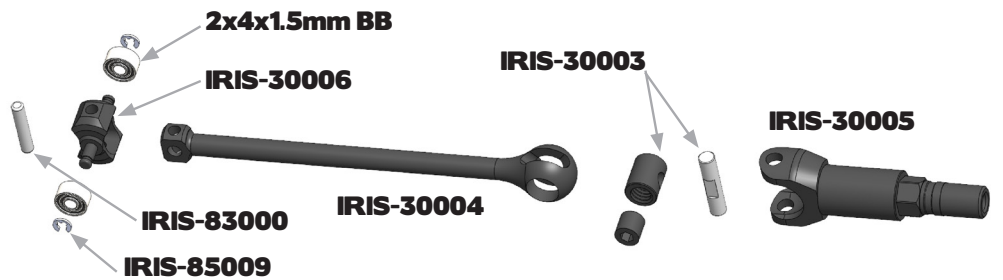
REAR DRIVESHAFT

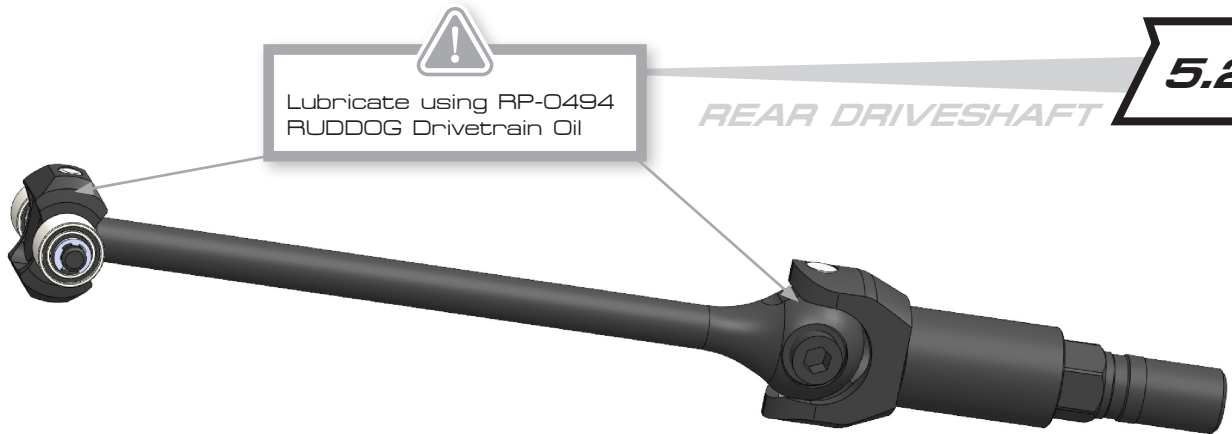
x1
M3x3mm
Set Screw

x2
2x4x1.5mm
Ball Bearing



Build this step twice !

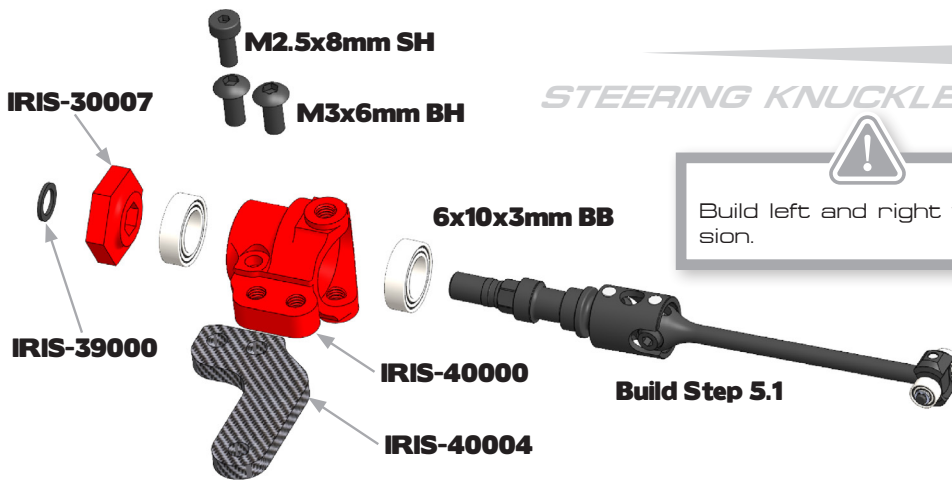




Lubricate using RP-0494
RUDDOG Drivetrain Oil

REAR DRIVESHAFT

5.2

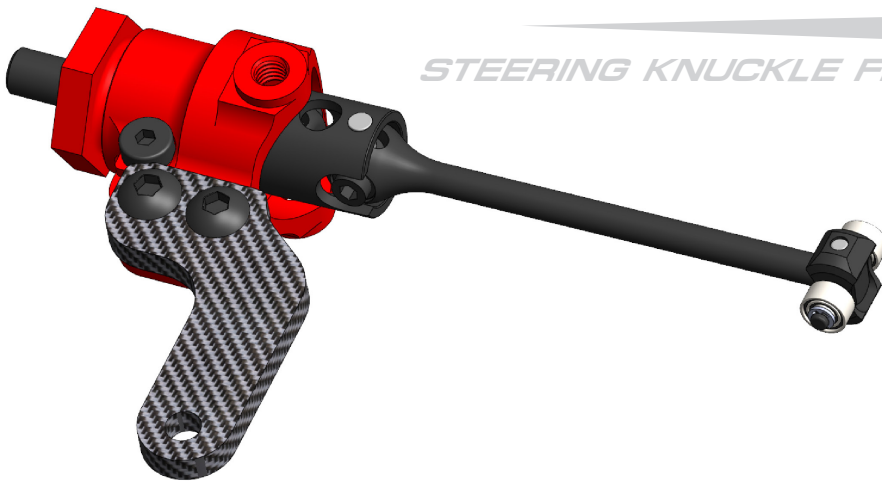


STEERING KNUCKLE FRONT L+R

6.1

Build left and right version.

- x4 M3x6mm Button Head Screw
- x2 M2.5x8mm Socket Head Screw
- x4 6x10x3mm Ball Bearing



STEERING KNUCKLE FRONT L+R

6.1

6.2

STEERING KNUCKLE REAR L+R

x4
M3x6mm
Button Head Screw

x2
M2.5x8mm
Socket Head Screw

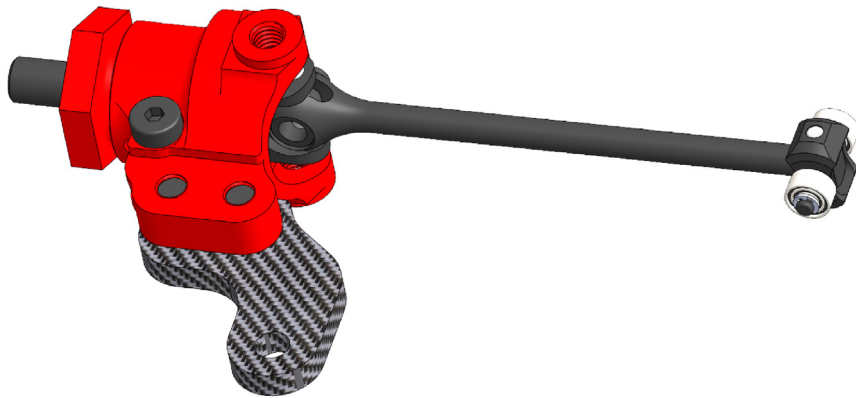
x4
6x10x3mm
Ball Bearing




Build left and right version.

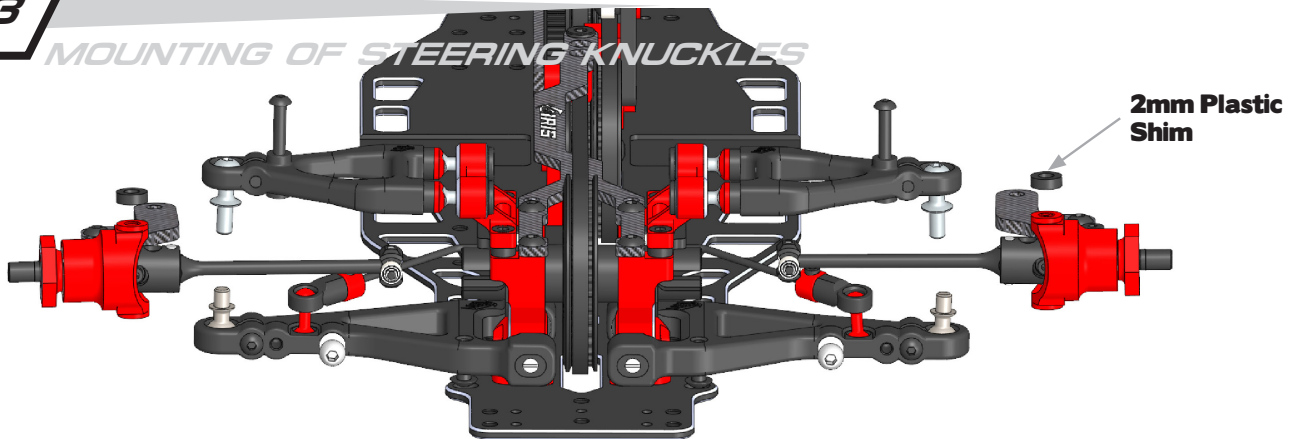
6.2

STEERING KNUCKLE REAR L+R



6.3

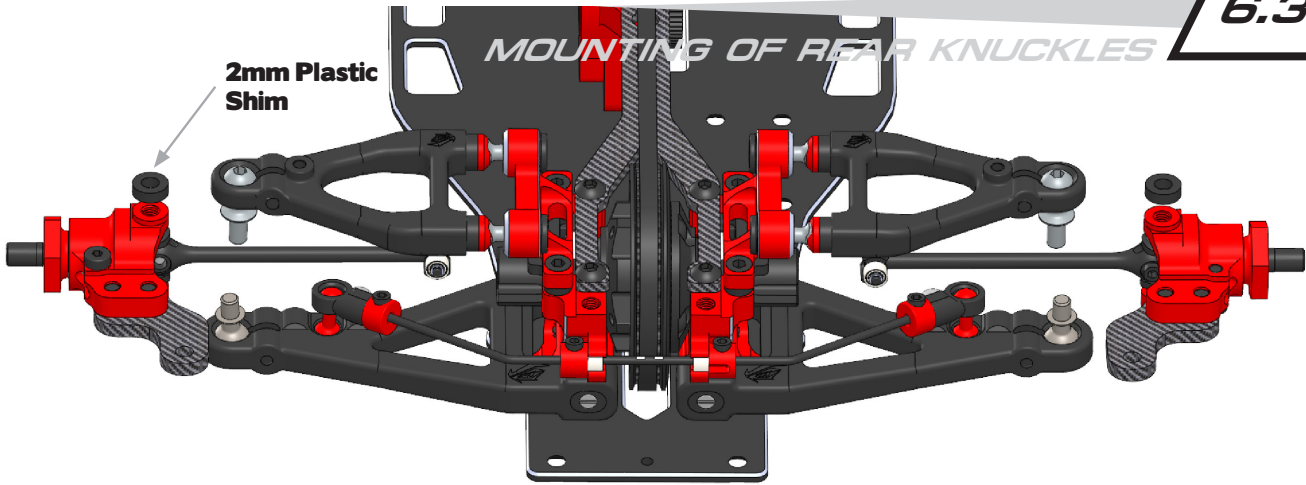
MOUNTING OF STEERING KNUCKLES



6.3

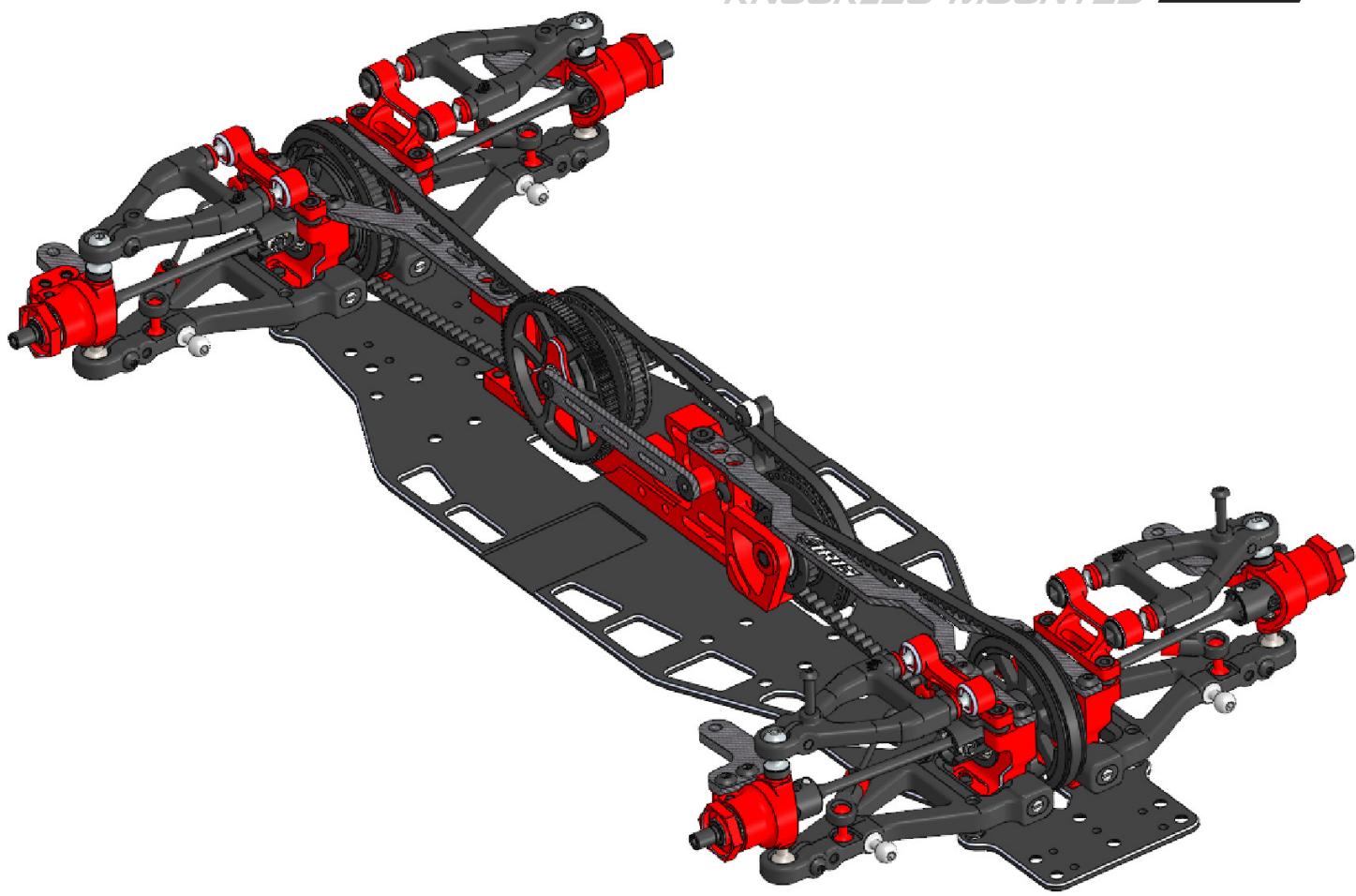
MOUNTING OF REAR KNUCKLES

2mm Plastic Shim



6.3

KNUCKLES MOUNTED



7.1

SHOCKS LEFT

x10
M2x6mm
Counter Sunk Screw

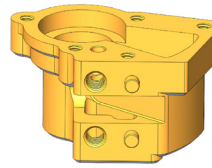


500 cst for front shocks
800 cst for rear shocks

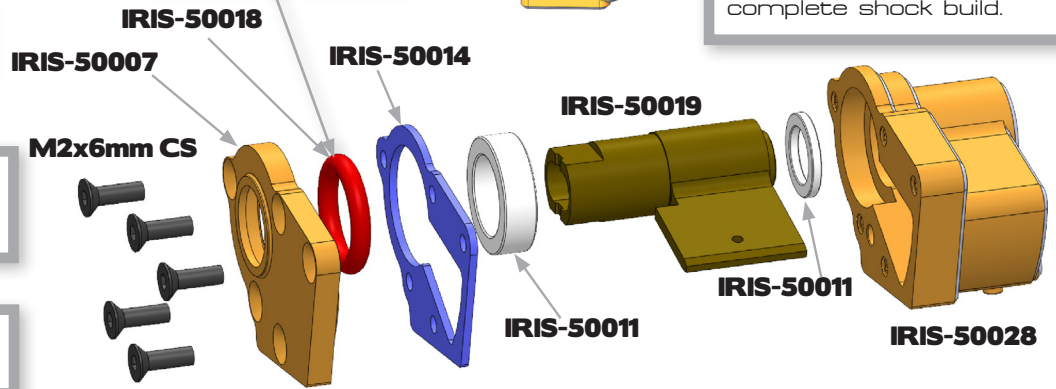


Build this step twice !

Lubricate using
RUDDOG Red Stuff
Grease or similar.



Insert guide shim and fill
with silicone oil. After-
wards insert piston and
complete shock build.



7.2

SHOCKS RIGHT

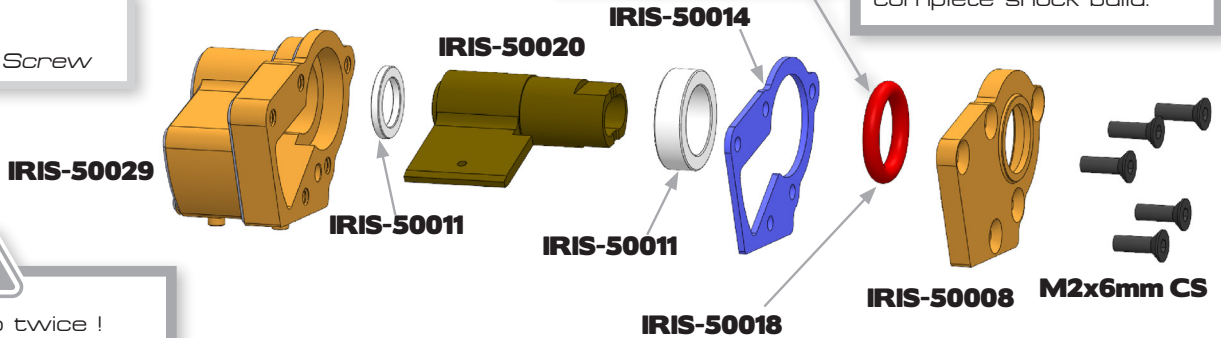
x10
M2x6mm
Counter Sunk Screw



Build this step twice !

Lubricate using
RUDDOG Red Stuff
Grease or similar.

Insert guide shim and fill
with silicone oil. After-
wards insert piston and
complete shock build.



7.3

FRONT ROCKERS

x4
M2x4mm
Counter Sunk Screw

x2
M2x5mm
Socket Head Screw

RIGHT Version

LEFT Version

IRIS-50035

IRIS-50034

M2x4mm CS

M2x5mm SH

IRIS-50031

M2x4mm CS

IRIS-50030

M2x5mm SH

Build left and right ver-
sion.



Build left and right version.

7.4

RIGHT Version

LEFT Version

REAR ROCKERS

x4
M2x4mm
Counter Sunk Screw

x2
M2x5mm
Socket Head Screw

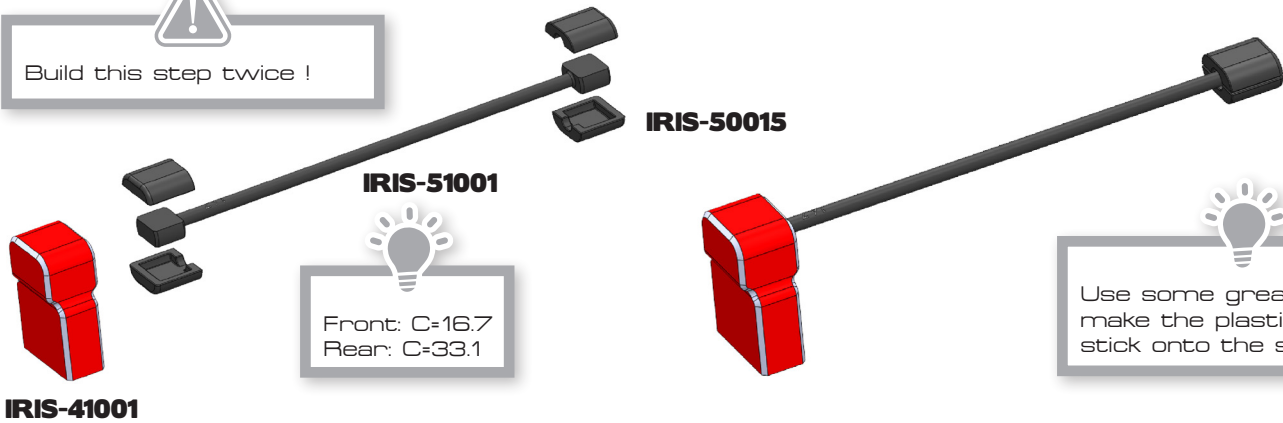


7.5

SPRING MOUNTS FRONT



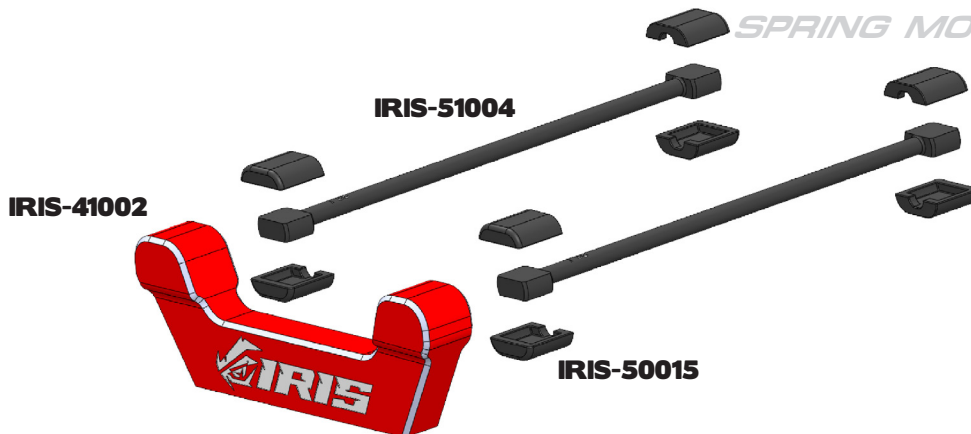
Build this step twice !



Use some grease to make the plastic inserts stick onto the spring.

7.6

SPRING MOUNT REAR

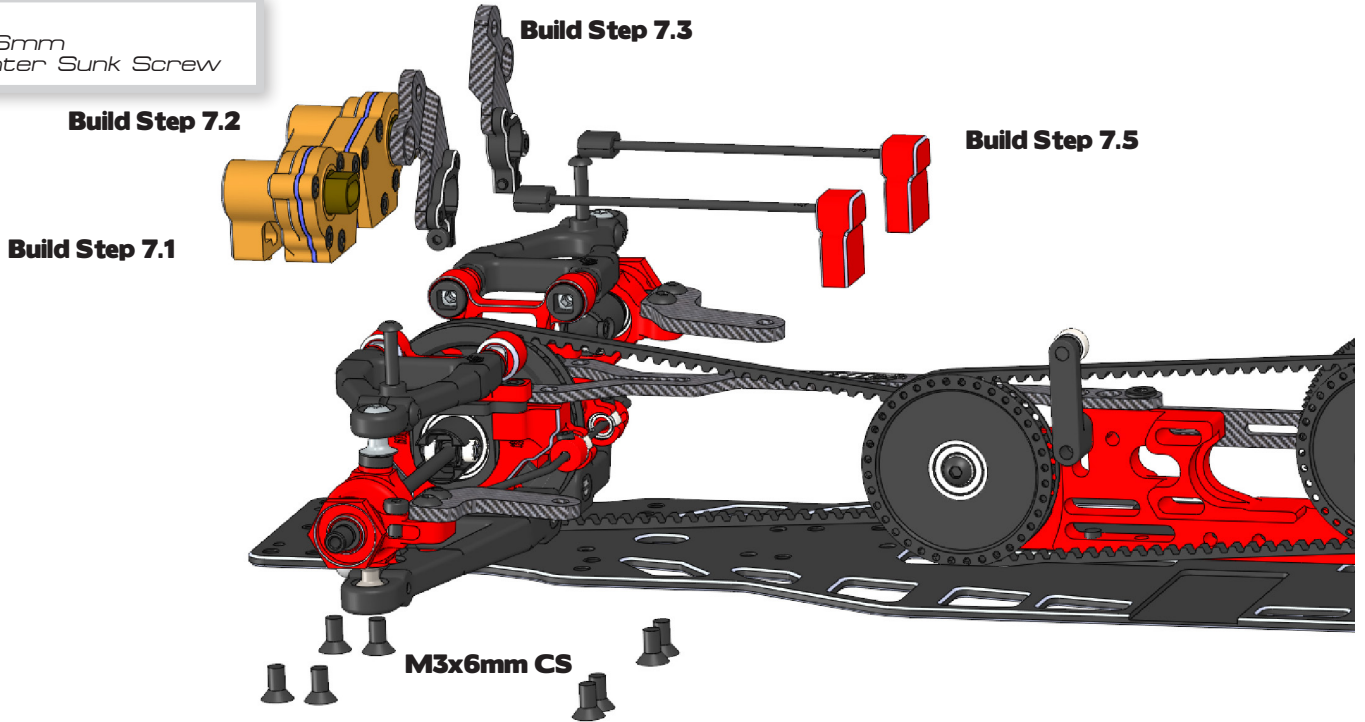


Use some grease to make the plastic inserts stick onto the spring.

7.6

MOUNTING OF FRONT SHOCKS

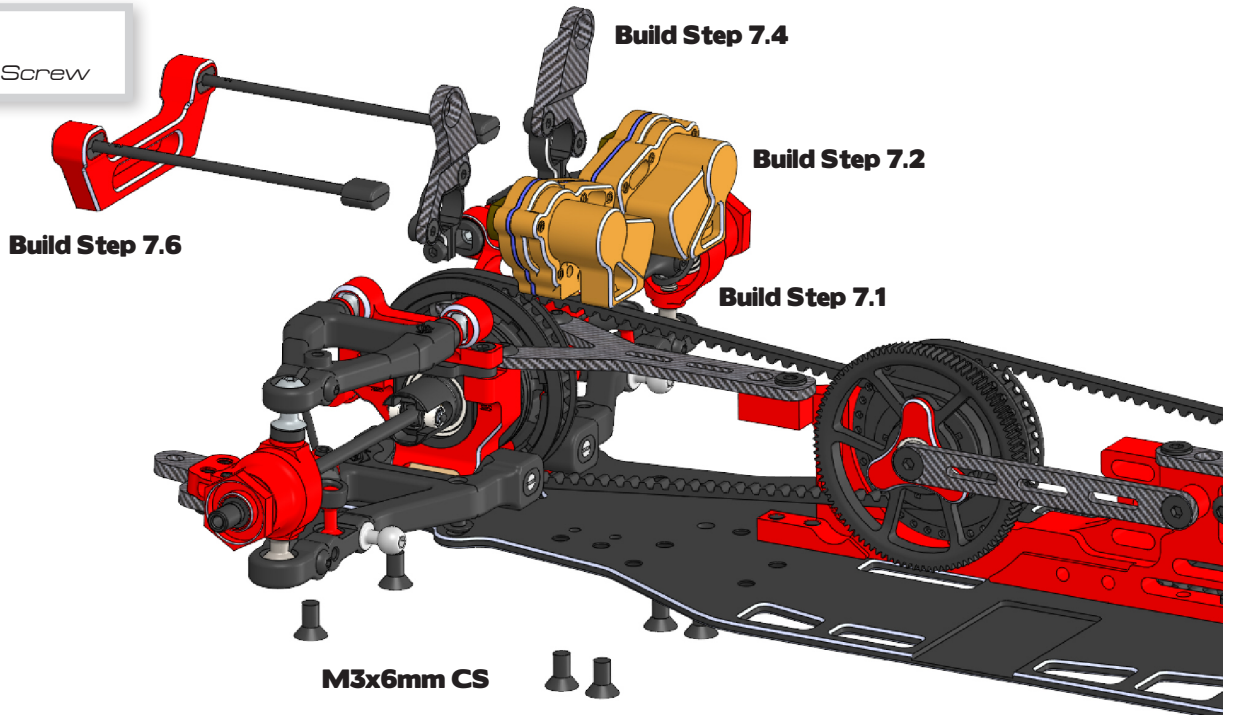
x8
M3x6mm
Counter Sunk Screw



7.6

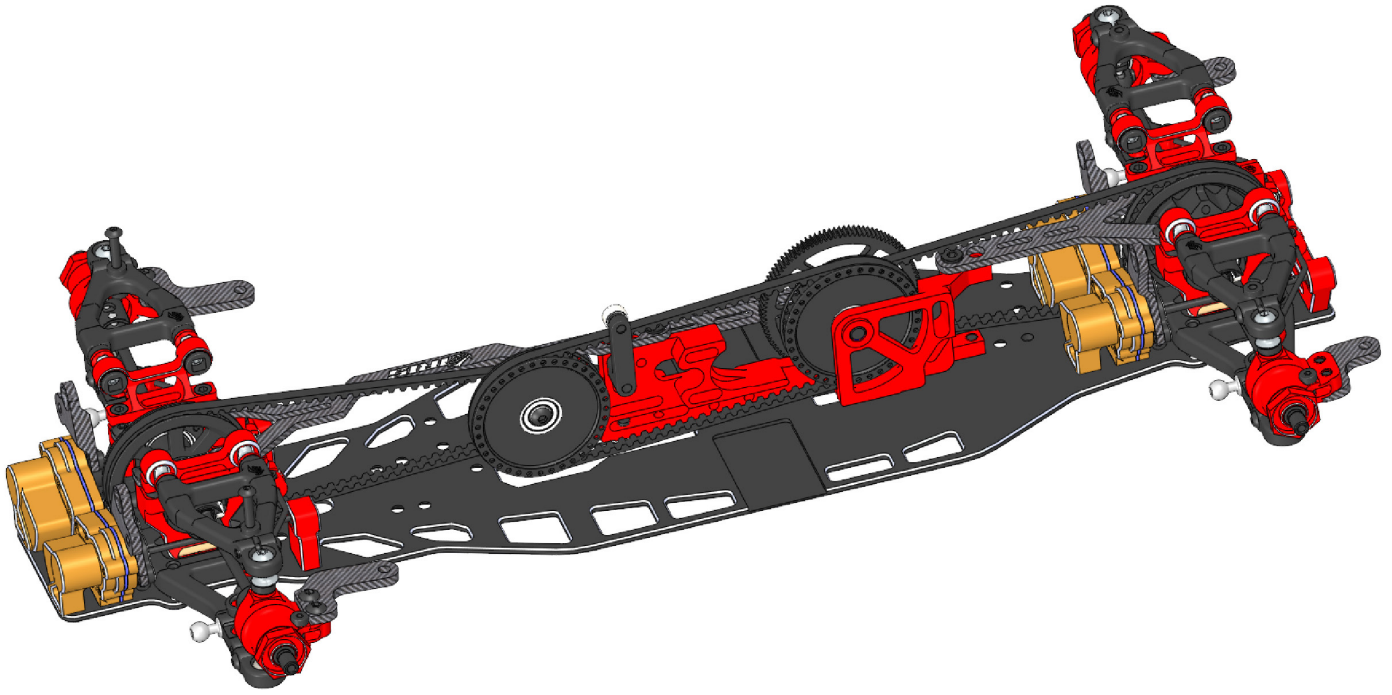
MOUNTING OF REAR SHOCKS

x8
M3x6mm
Counter Sunk Screw



7.6

SHOCKS MOUNTED



8.1

STEERING SYSTEM

IRIS-84002

M3x6mm BH

M2x6mm SH

IRIS-21008

IRIS-84002

M3x6mm BH

4x8x3mm BB

IRIS-21007

M2x4mm SH

M3x6mm BH



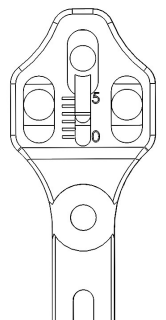
Servo is not included. We recommend the RUDDOG Racing RR1406 servo.

x6
M3x6mm
Button Head Screw

x1
M2x6mm
Socket Head Screw

x2
M2x4mm
Socket Head Screw

Standard Setting

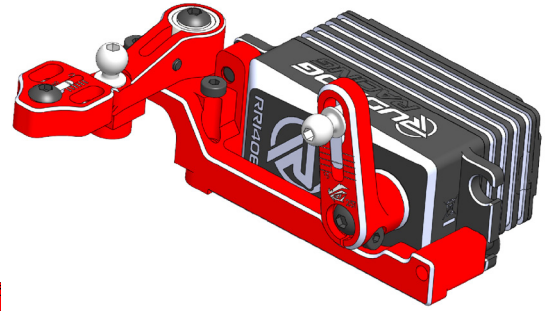
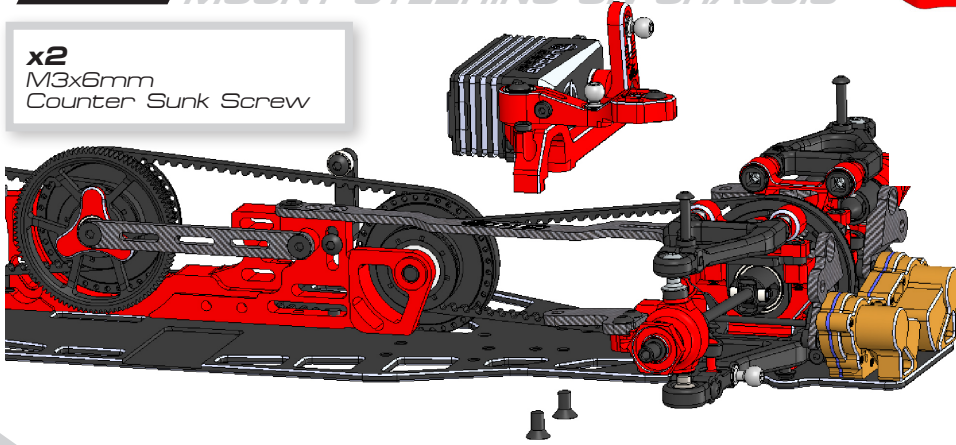


Servo Horn is not included. We recommend:
IRIS-73000 | 25T Spline
IRIS-73001 | 23T Spline

8.2

MOUNT STEERING ON CHASSIS

x2
M3x6mm
Counter Sunk Screw

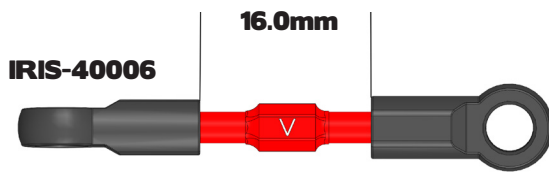


9.1

SHOCK AND SERVO LINKS



Build the shock link 4 times!



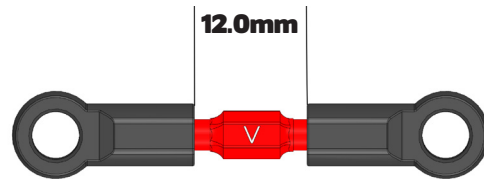
IRIS-40006

16.0mm

IRIS-40002

Short Ball Cup

Servo Link



12.0mm

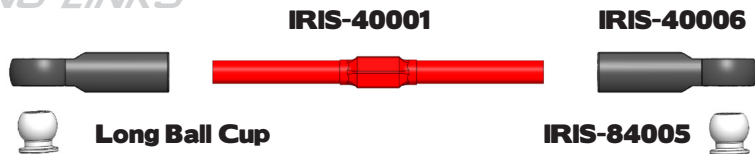
4x Shock Link

9.2

FRONT STEERING LINKS



Build this step twice!



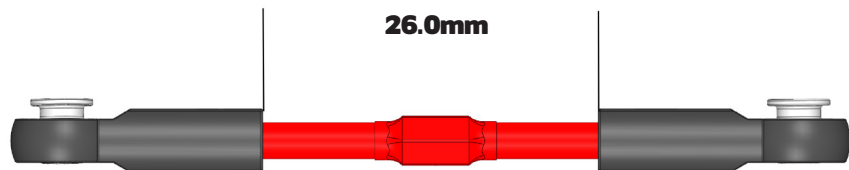
IRIS-40001

IRIS-40006



Long Ball Cup

IRIS-84005



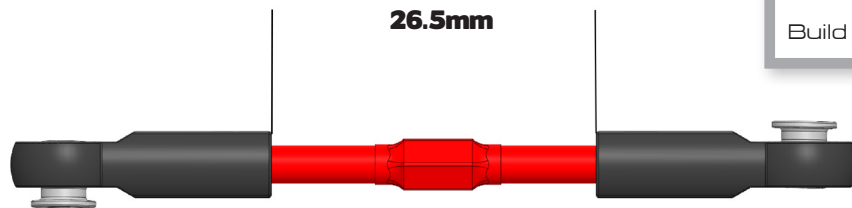
26.0mm

9.3

REAR SUSPENSION LINKS



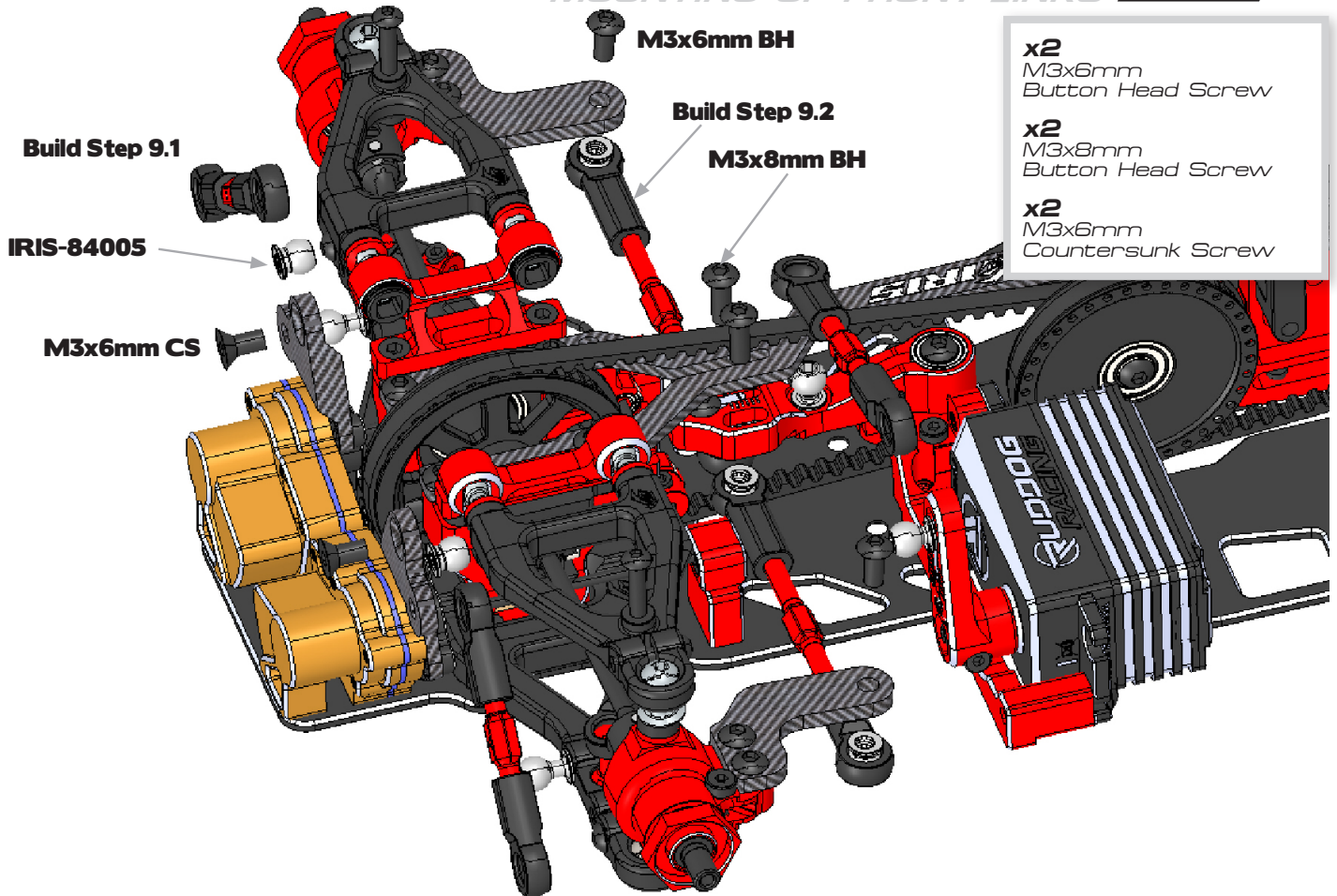
Build this step twice!



26.5mm

9.4

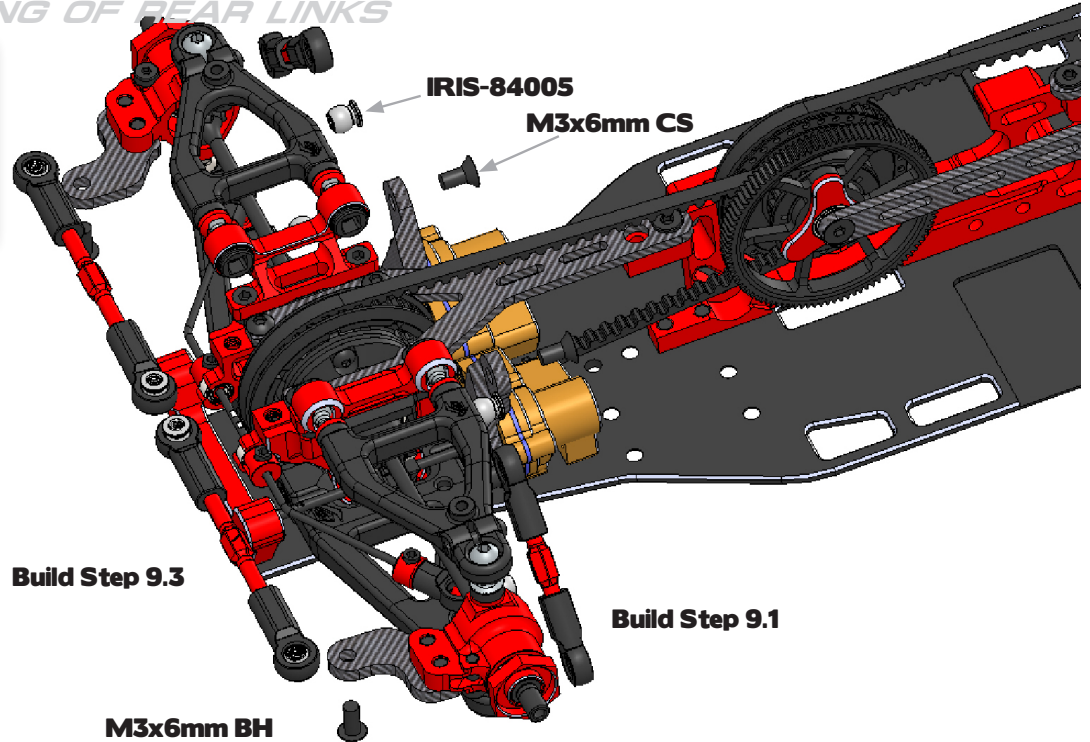
MOUNTING OF FRONT LINKS



9.4

MOUNTING OF REAR LINKS

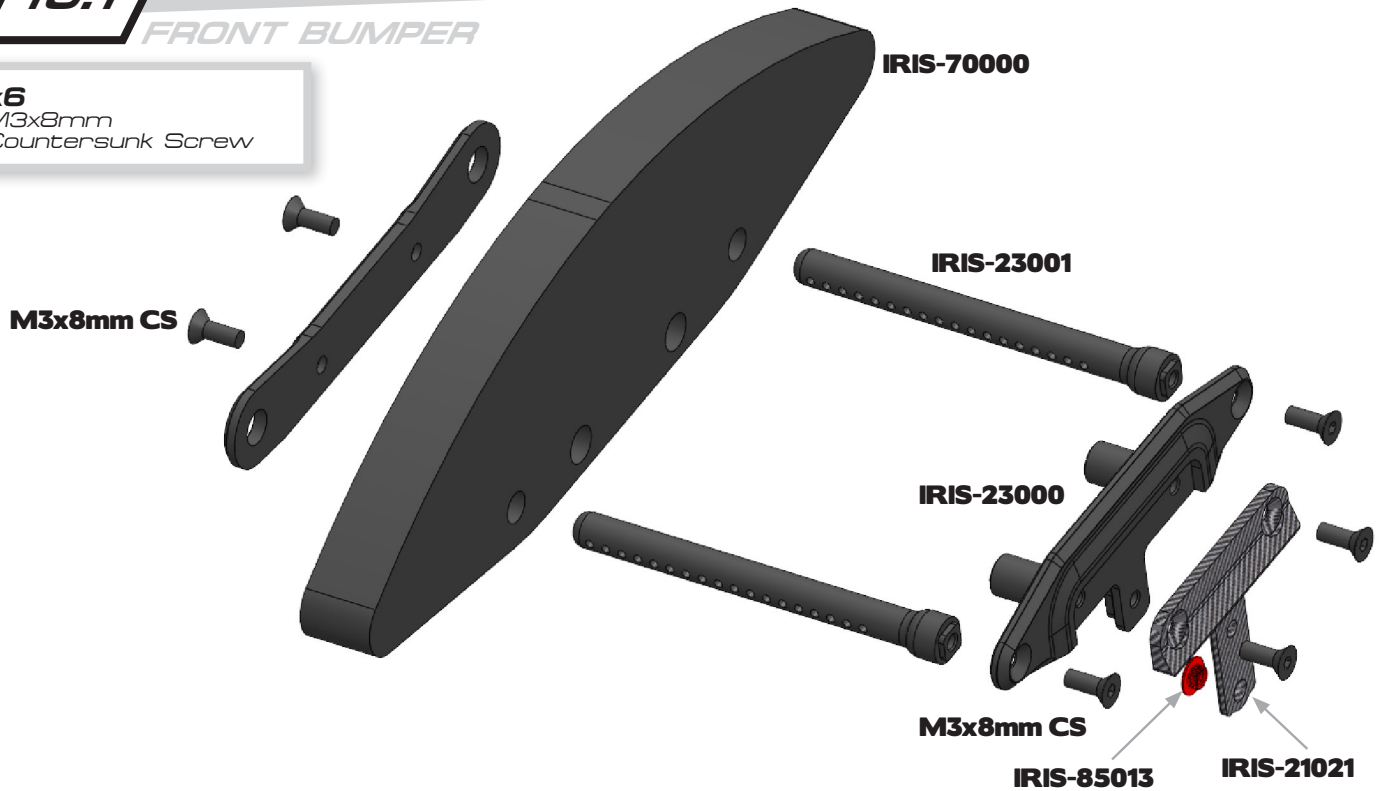
- x2**
M3x6mm
Button Head Screw
- x2**
M3x6mm
Countersunk Screw



10.1

FRONT BUMPER

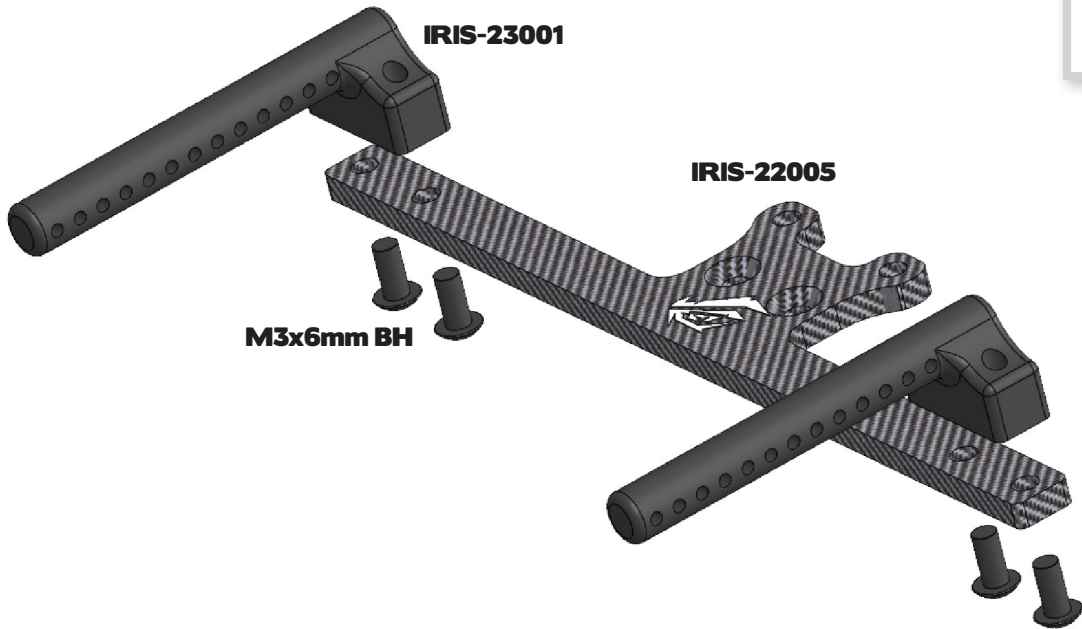
- x6**
M3x8mm
Countersunk Screw



10.2

REAR BODY MOUNT

x4
M3x6mm
Button Head Screw

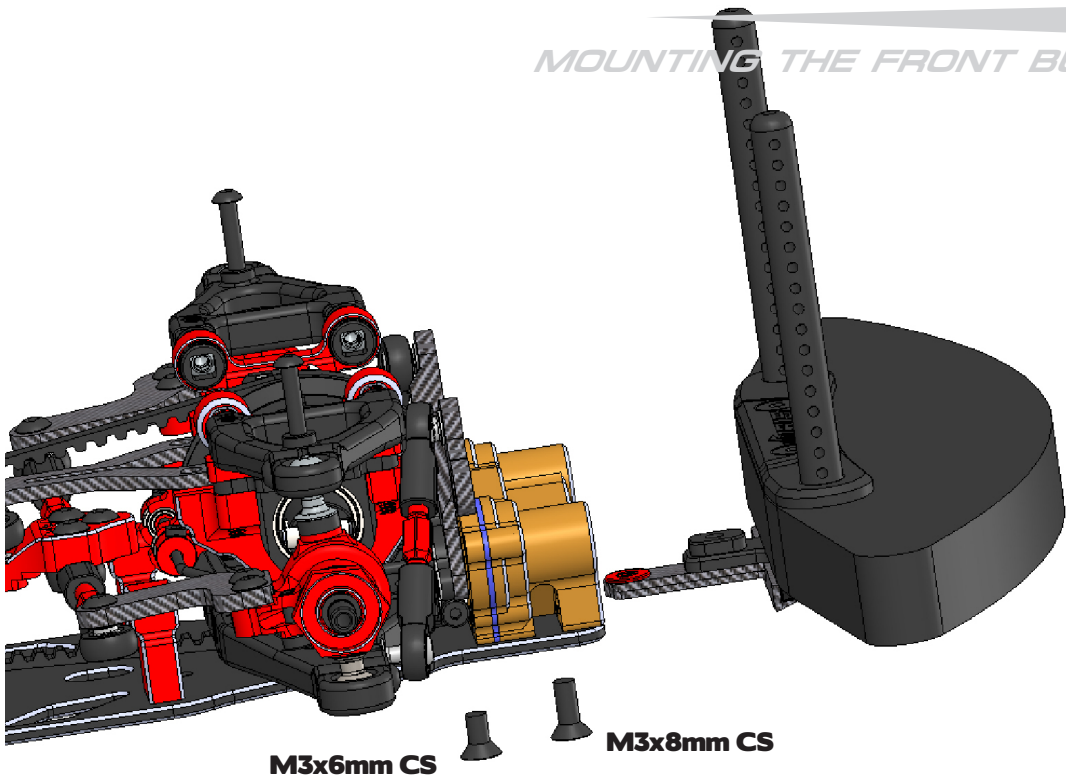


10.3

MOUNTING THE FRONT BUMPER

x1
M3x6mm
Countersunk Screw

x1
M3x8mm
Countersunk Screw

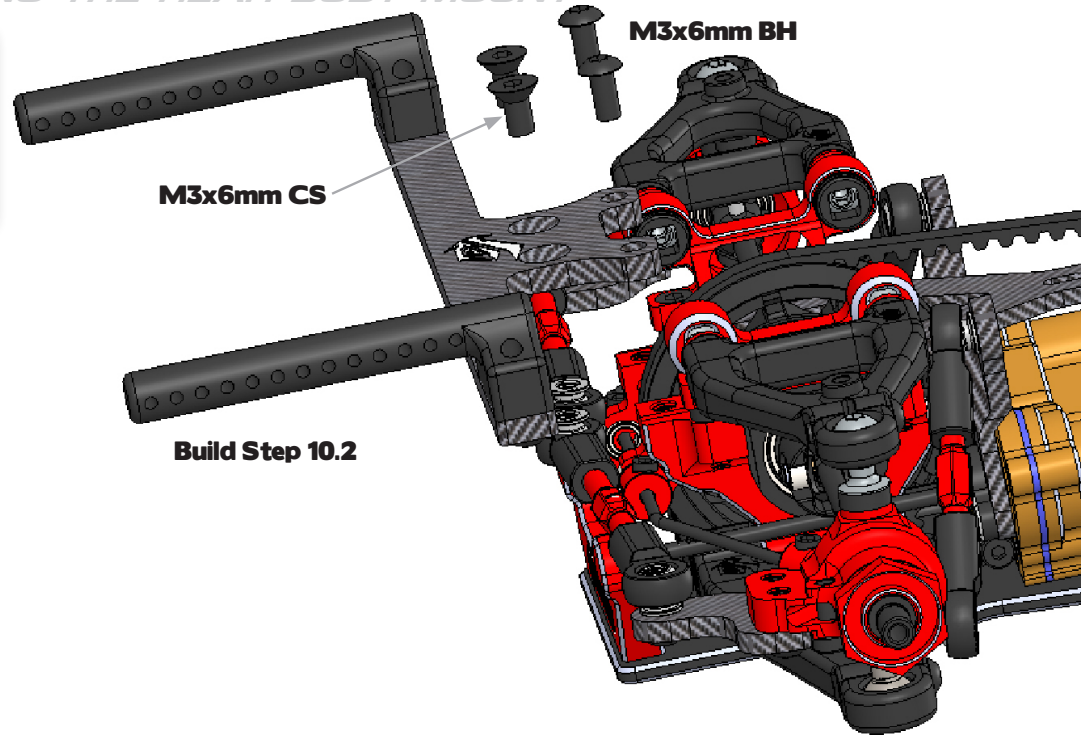


10.3

MOUNTING THE REAR BODY MOUNT

x2
M3x6mm
Countersunk Screw

x2
M3x6mm
Button Head Screw



M3x6mm CS

M3x6mm BH

Build Step 10.2

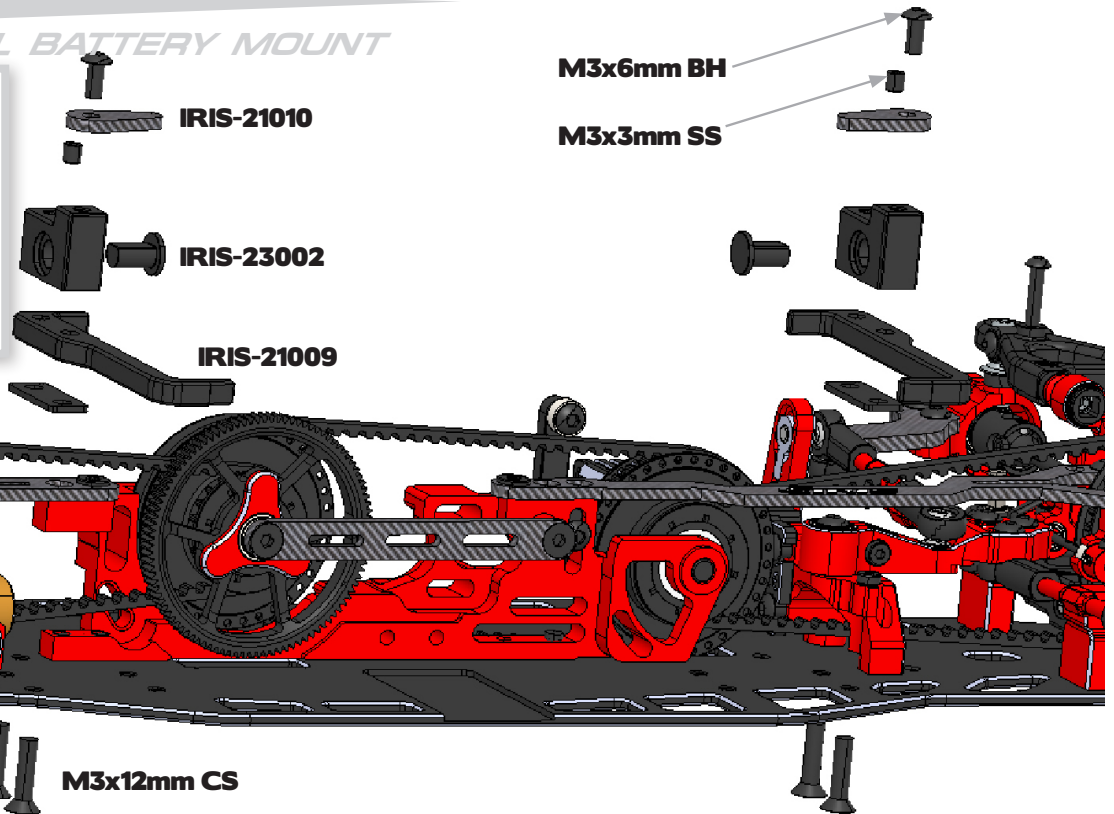
10.3

INSTALL BATTERY MOUNT

x2
M3x6mm
Button Head Screw

x2
M3x3mm
Set Screw

x4
M3x12mm
Countersunk Screw



M3x6mm BH

M3x3mm SS

IRIS-21010

IRIS-23002

IRIS-21009

M3x12mm CS

GEAR UP, SPEED UP:

CHOOSE RUDDOG FOR YOUR IRIS ONE.05.



1/10 TOURING TIRE HEATING SYSTEM



RUDDOG HD LIPO CHARGING BAG



RSS65 SOLDERING STATION 65W



CAR BAG - 1/10 TOURING CAR



ONROAD ALUMINIUM CAR STAND



SMALL RACING BAG



RUDDOG.EU

www.iris-racing.com



RUDDOG
Distribution GmbH
Sägewerkstr. 16
83416 Saaldorf-Surheim
GERMANY

Email: support@ruddog.eu
Tel: +49 8654 5894818

